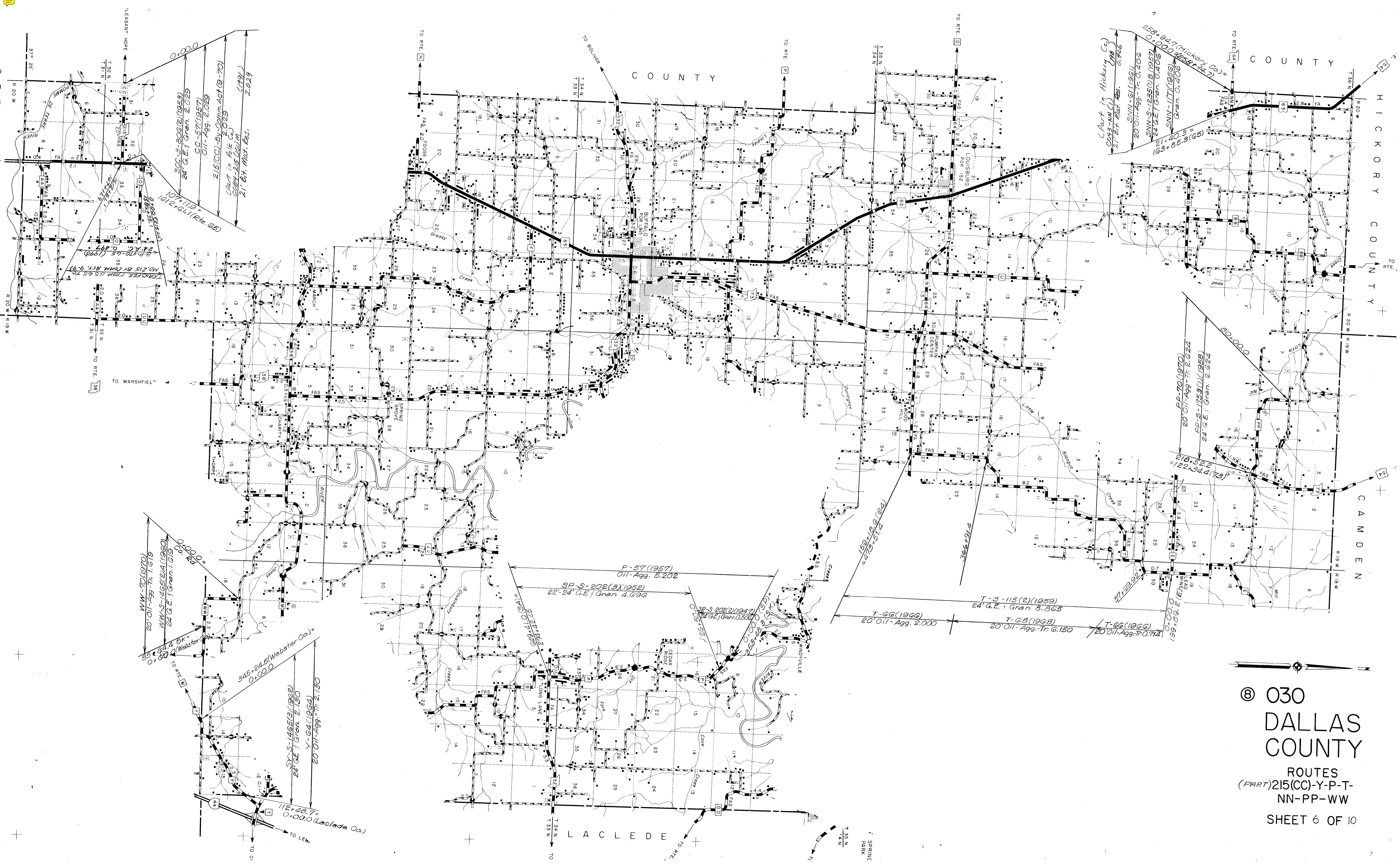


⑧ 030
 DALLAS
 COUNTY
 ROUTES
 32(A) - 64(C-N)
 SHEET 1 OF 10



107° 11.9' =
 161° 2' 6.1' (Reb. 65)
 S.C.C.-3-806(2)(1953)
 24' G.E. & Gran. 2,029
 C.C.-57(1957)
 011-Agg. 2,029
 215(CC) By Comm. Act (9-70)
 Part in Bk C
 COB-215(10/11)
 (1991)
 21' Bk. Mat. Res.
 2,029

W.W.-TD(1970)
 20' 011-Agg-Tr. 1,619
 W.W.S-1465(2)(1960)
 24' G.E. & Gran. 1,619
 85° 49' 4" Bk.
 0° 00' 00" Webster
 305° 24' 5" (Webster Co.)
 0° 00' 00"
 S.Y.-S-1465(3)(1962)
 24' G.E. & Gran. 2,130
 Y-G-4(1964)
 20' 011-Agg-Tr. 2,130
 112° 48' 7"
 0° 00' 00" (Laclede Co.)

P-57(1957)
 011-Agg. 5,202
 S.P.-S-202(3)(1952)
 22' 24' G.E. & Gran. 4,696

S.P.-S-202(2)(1947)
 24' G.E. & Gran. 0,500

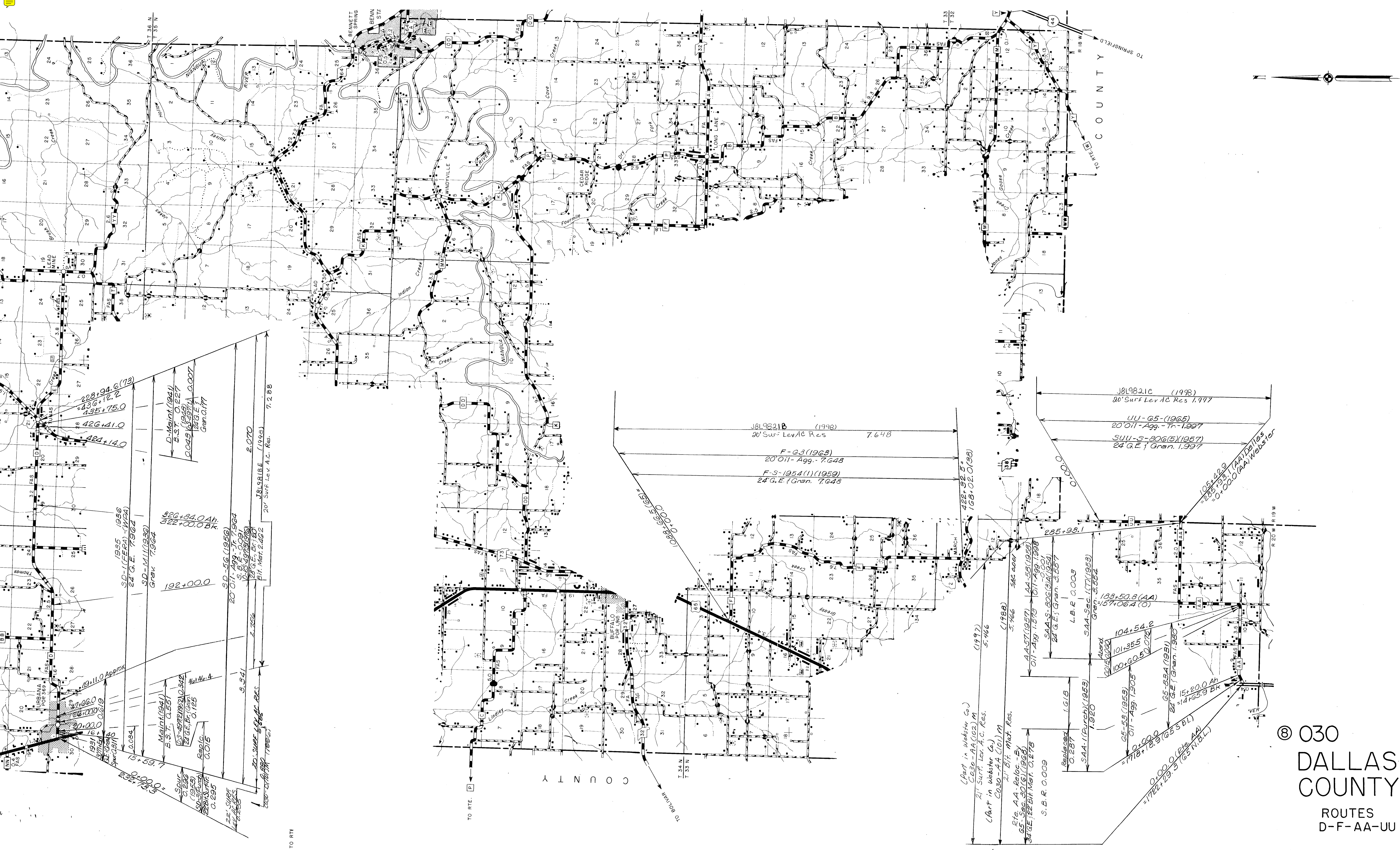
T-66(1966)
 20' 011-Agg. 2,000

T-S-115(2)(1959)
 24' G.E. & Gran. 8,865

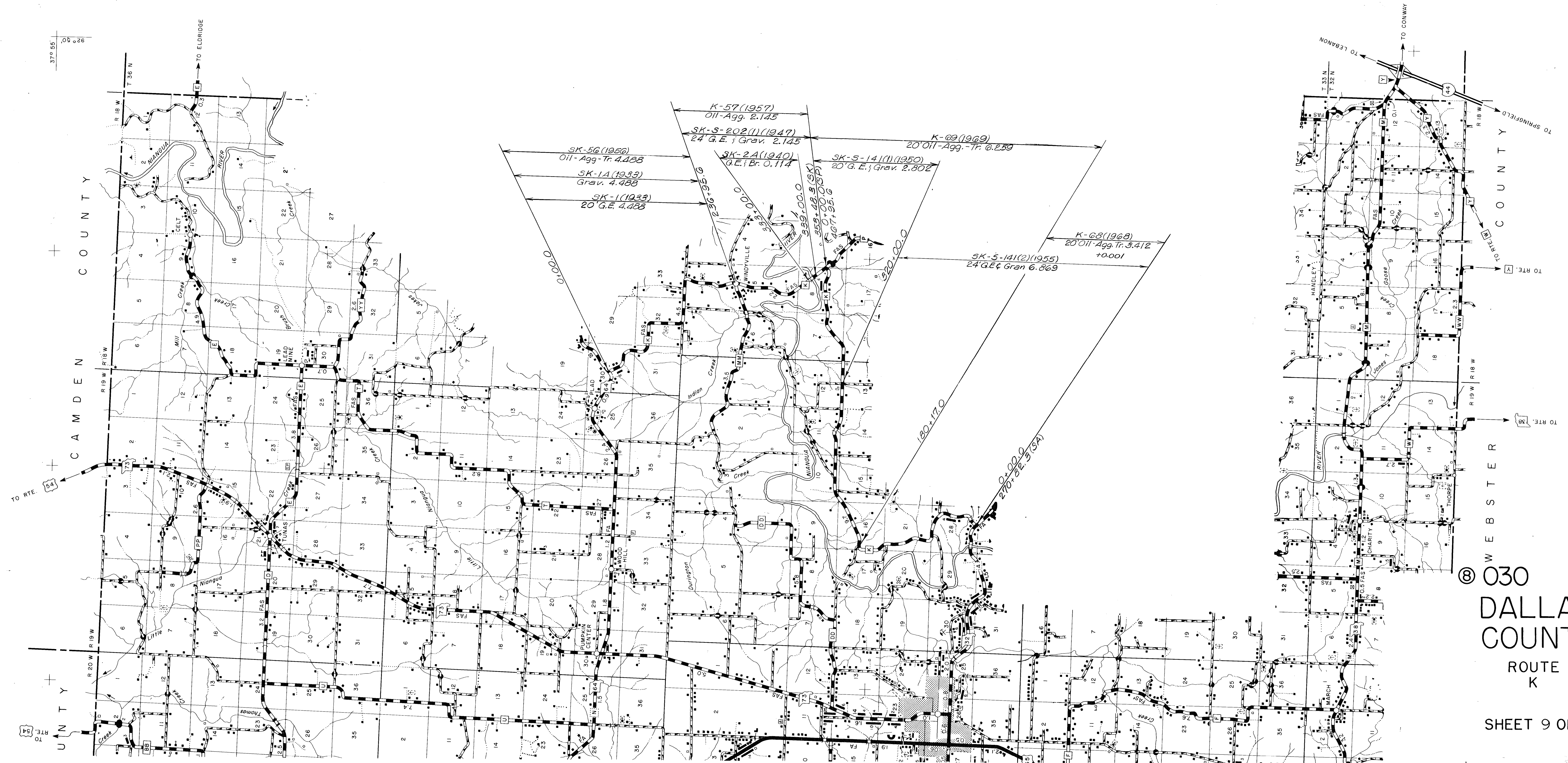
T-68(1968)
 20' 011-Agg-Tr. 6,150

T-66(1966)
 20' 011-Agg-Tr. 0,714

© 030
 DALLAS COUNTY
 ROUTES
 (PART) 215(CC)-Y-P-T-
 NN-PP-WW
 SHEET 6 OF 10



© 030
 DALLAS
 COUNTY
 ROUTES
 D-F-AA-UU



⑧ 030
 DALLAS
 COUNTY
 ROUTE
 K
 SHEET 9 OF 10

