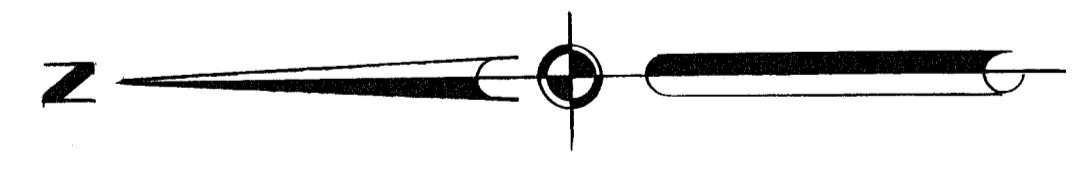
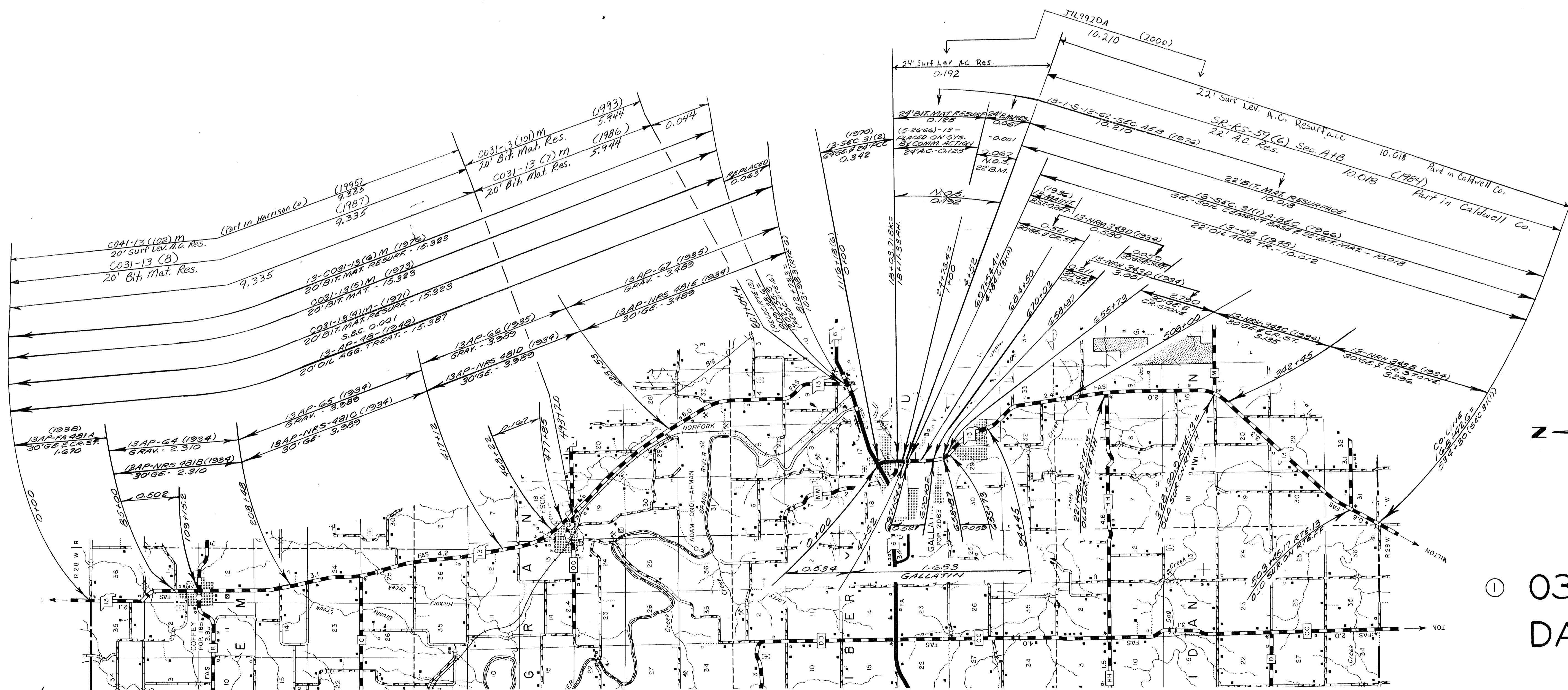


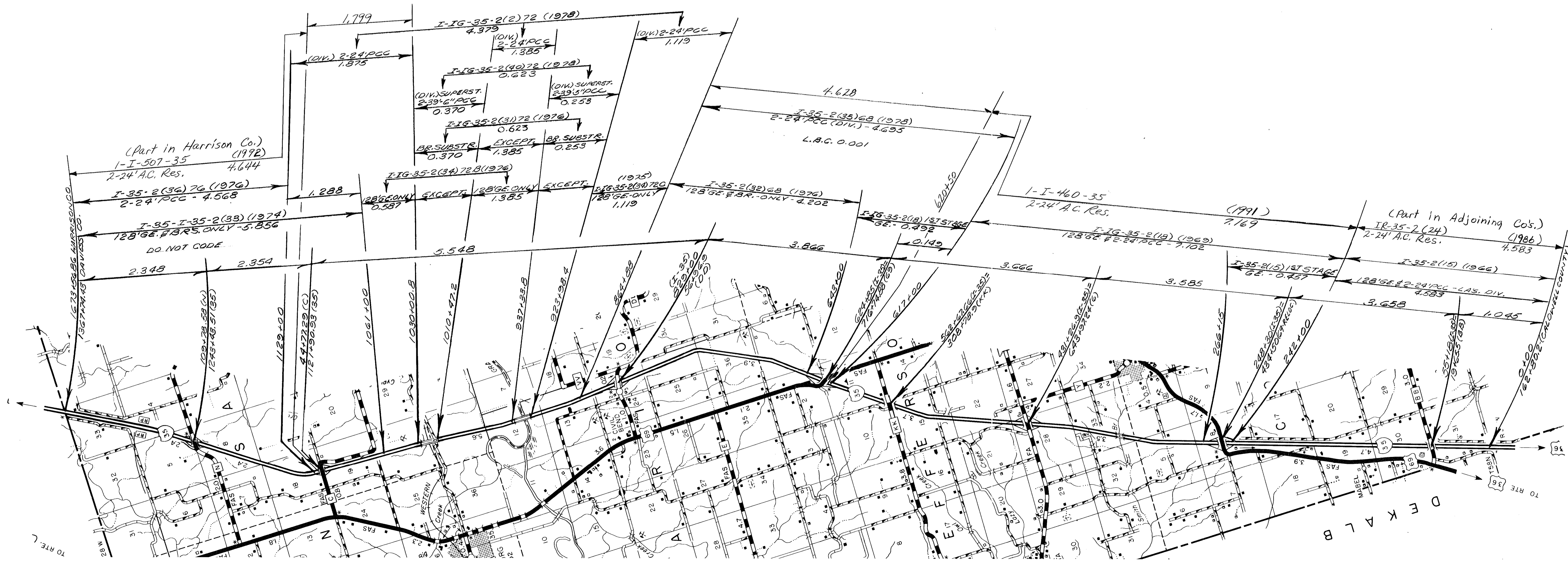


ROUTE 6



ROUTE 13

① 031 SHEET 2 OF 13
DAVISS

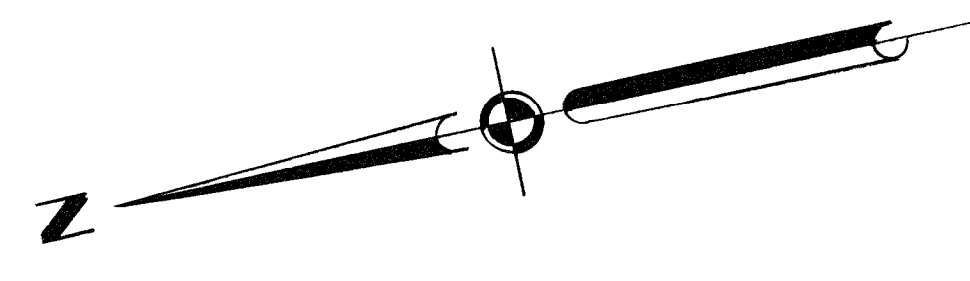
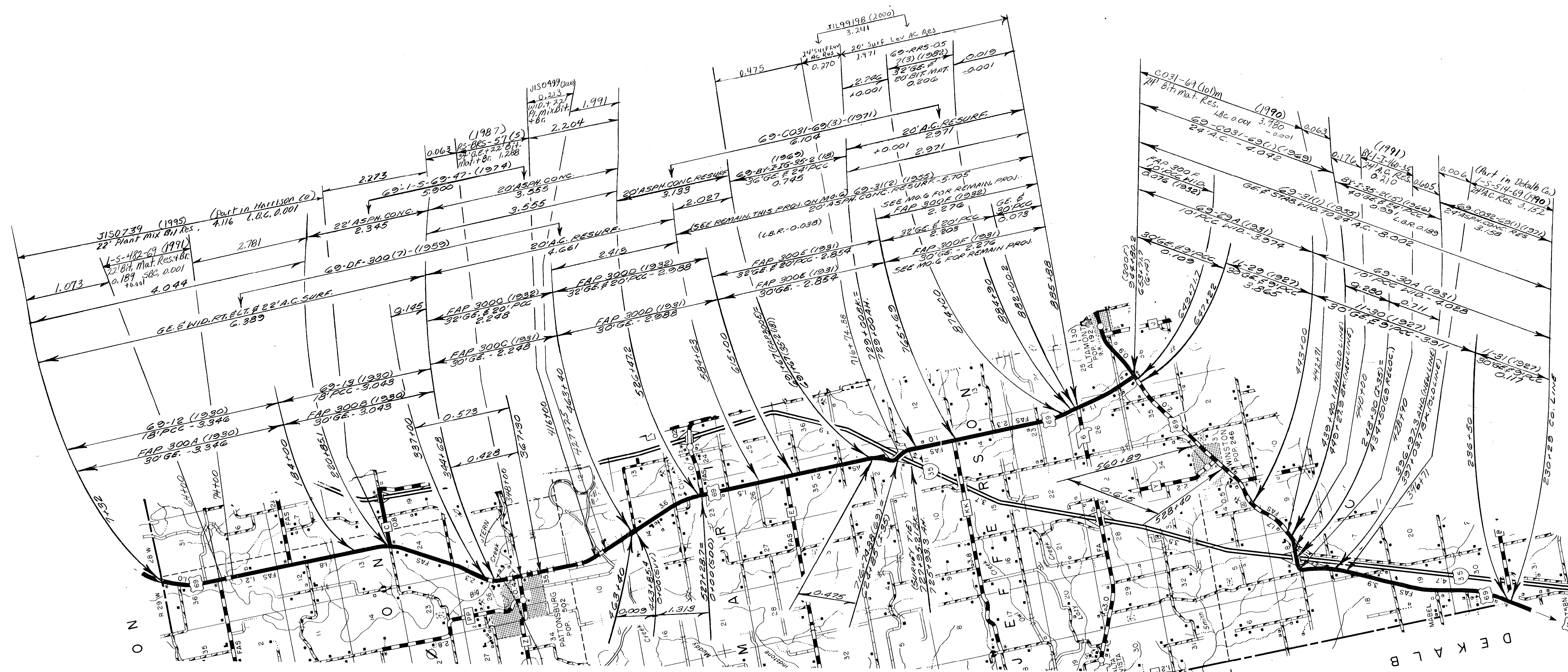


ROUTE I-35

SHEET 3 OF 13

DAVISS

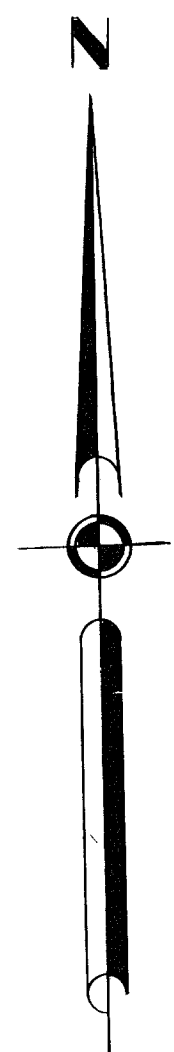
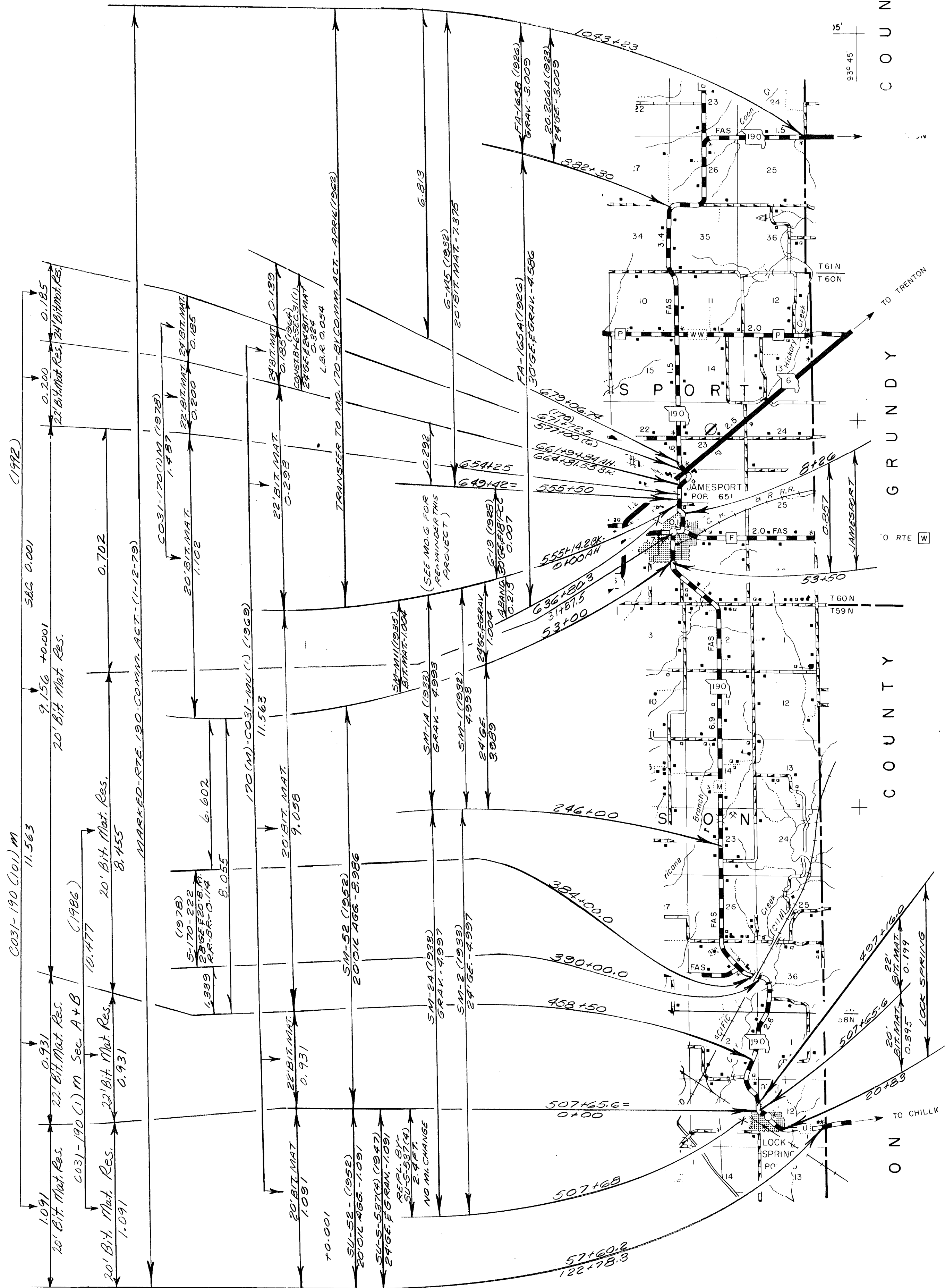
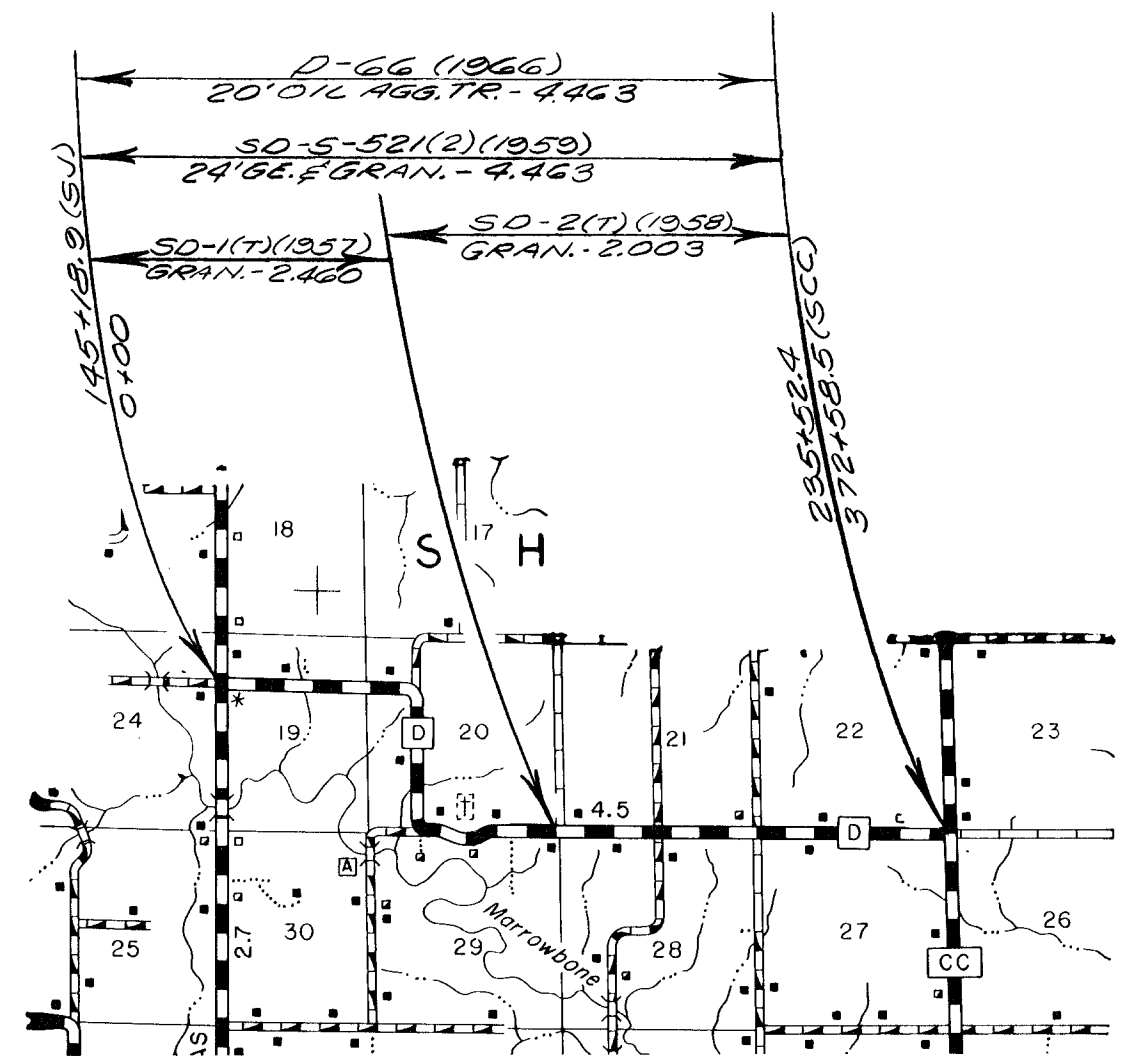
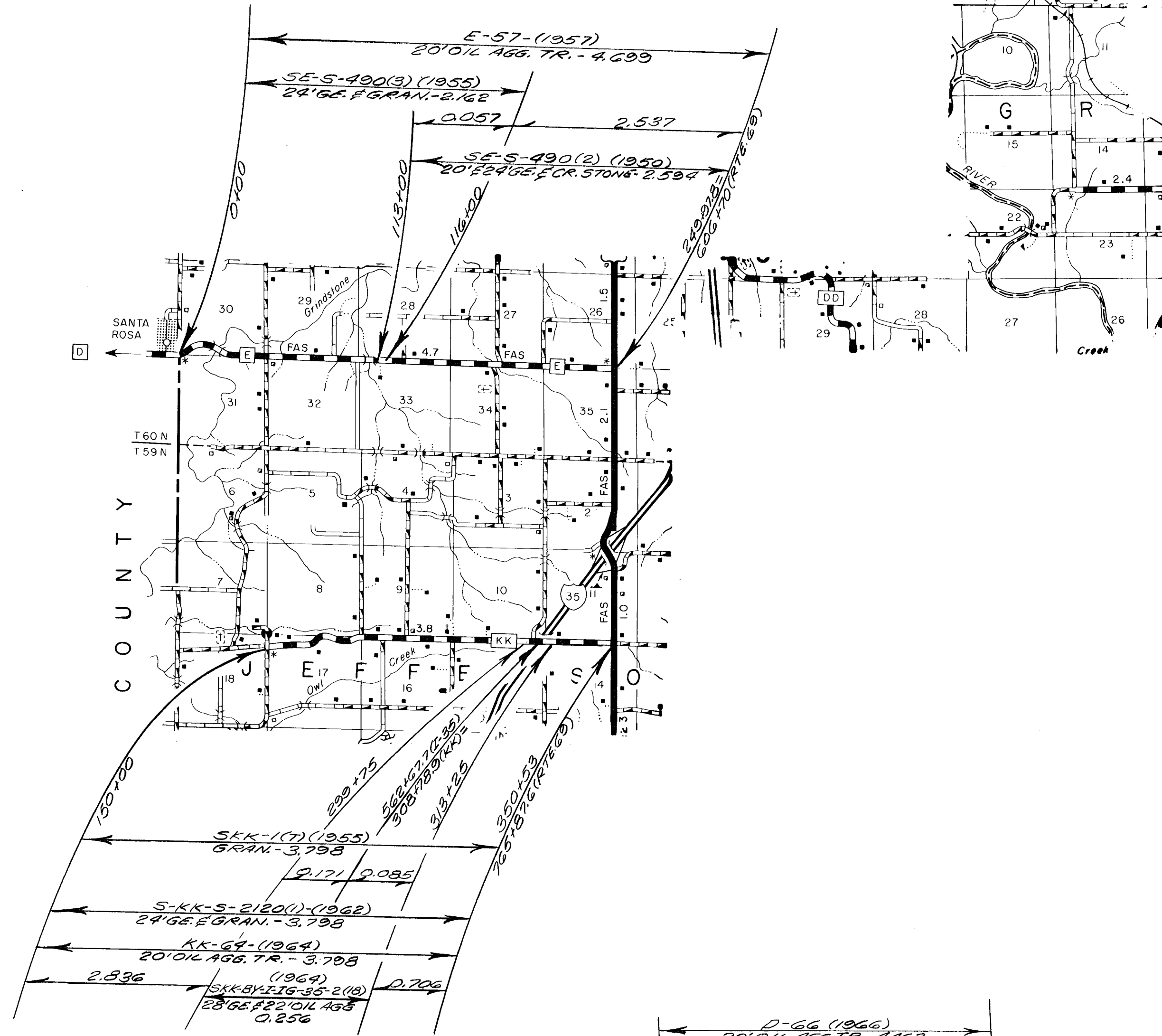
①



ROUTE 69

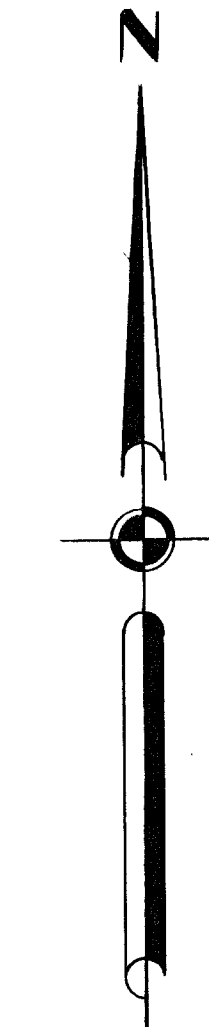
031 SHEET 4 OF 13

DAVISS



ROUTES 190 (M-U-ZZ)
D
E
K
K

① 031 SHEET 5 OF 13
DAVISS



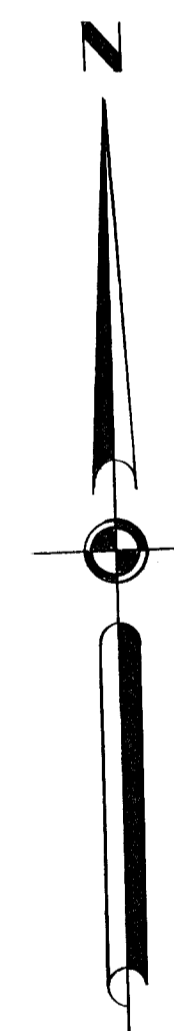
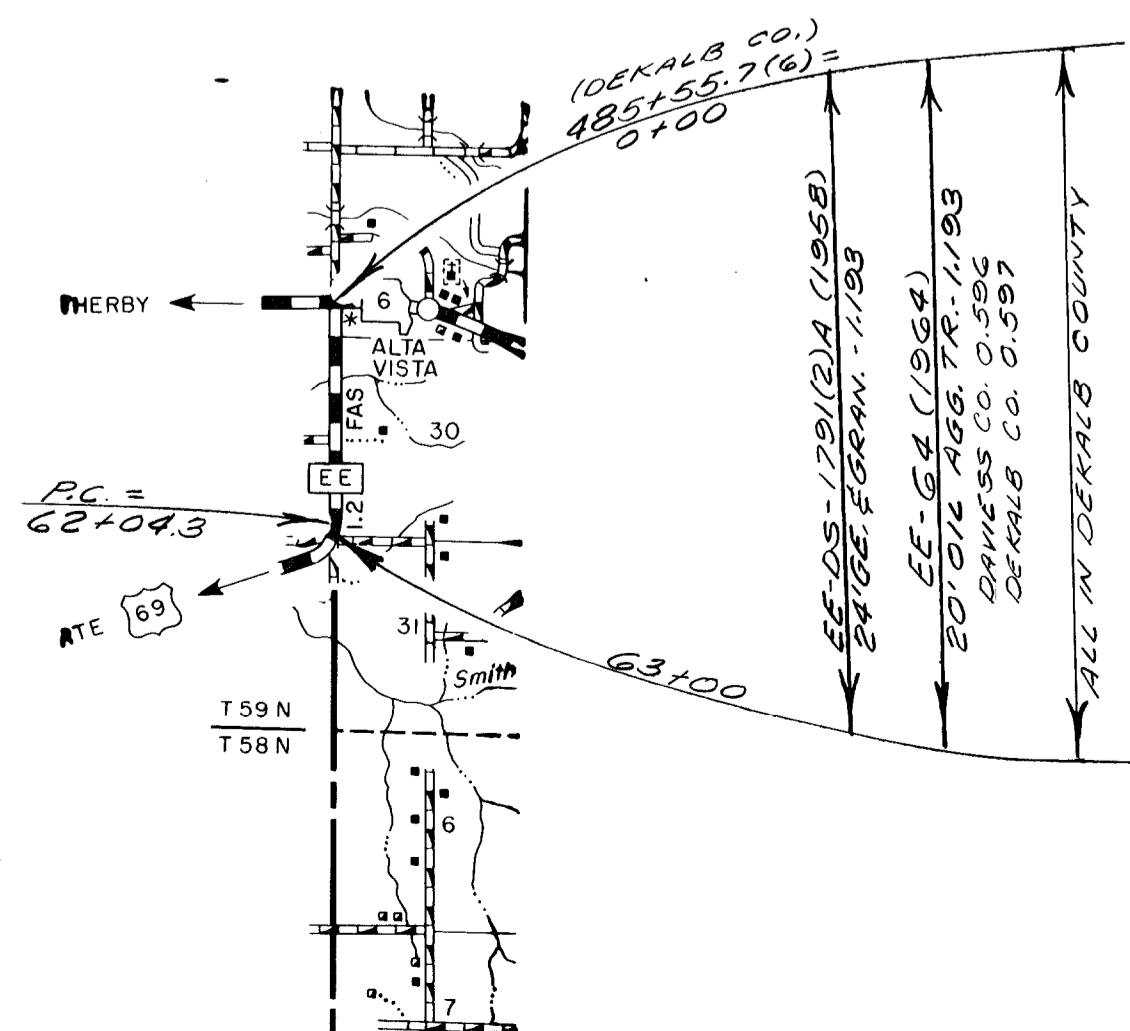
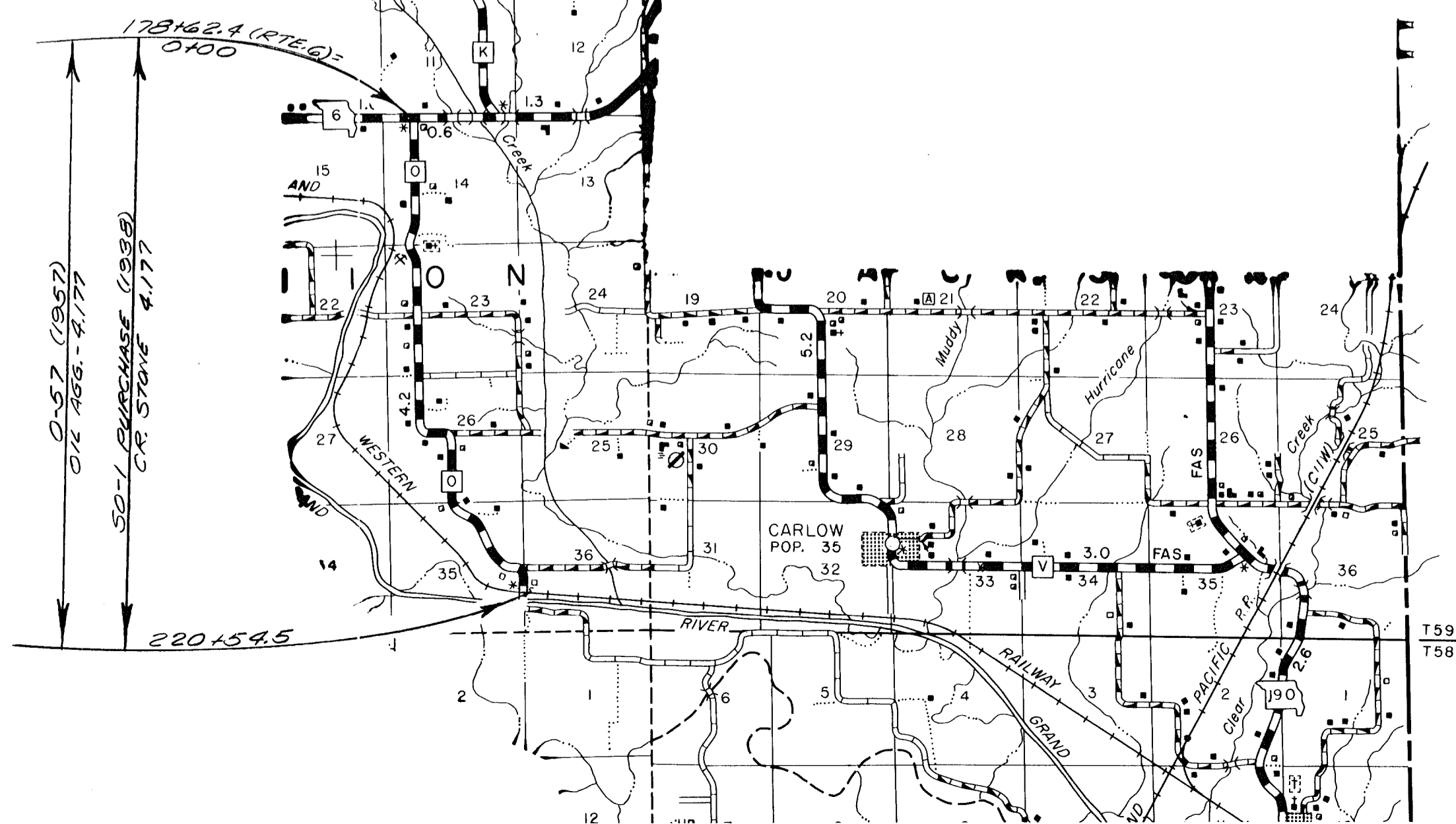
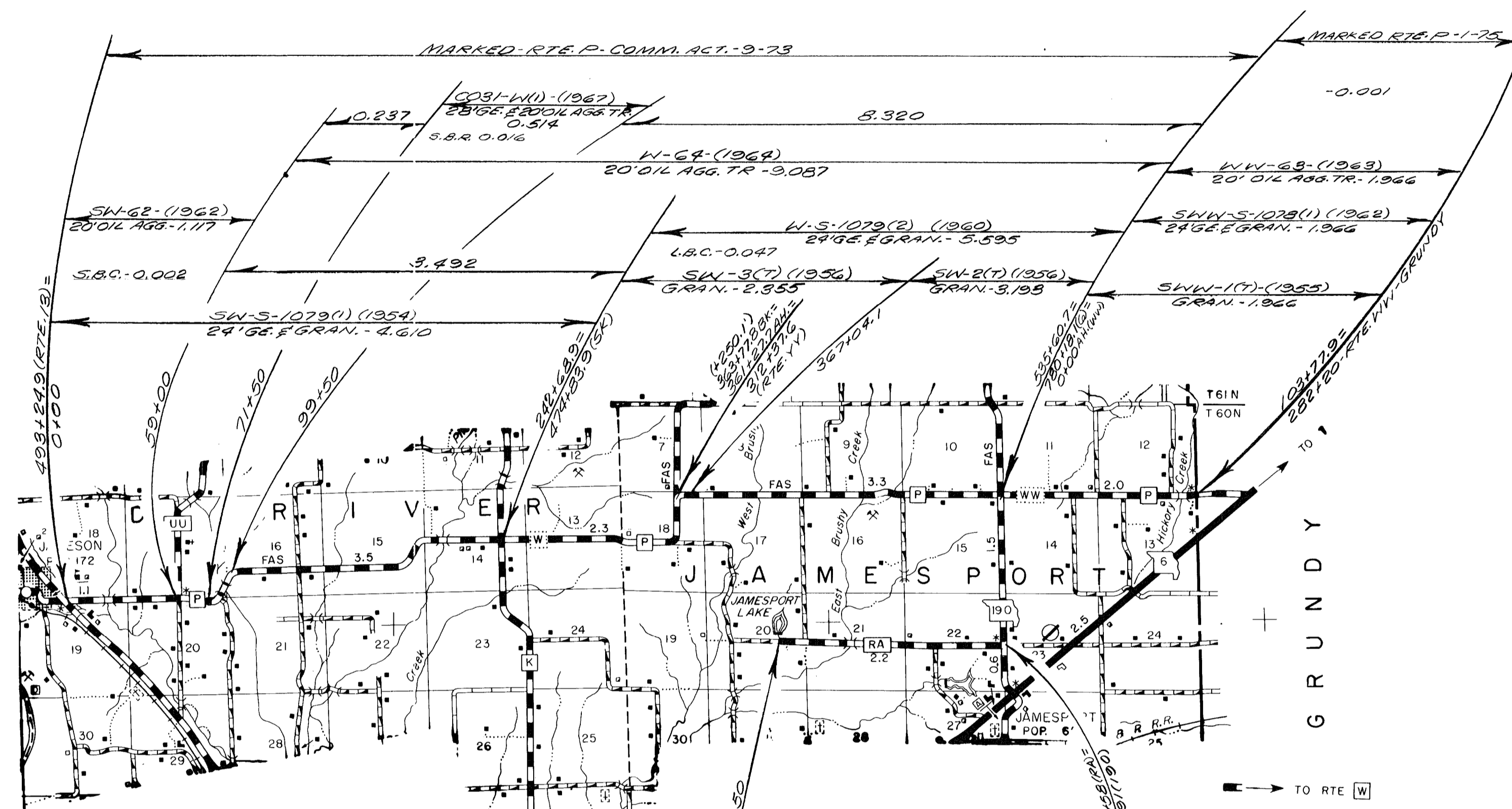
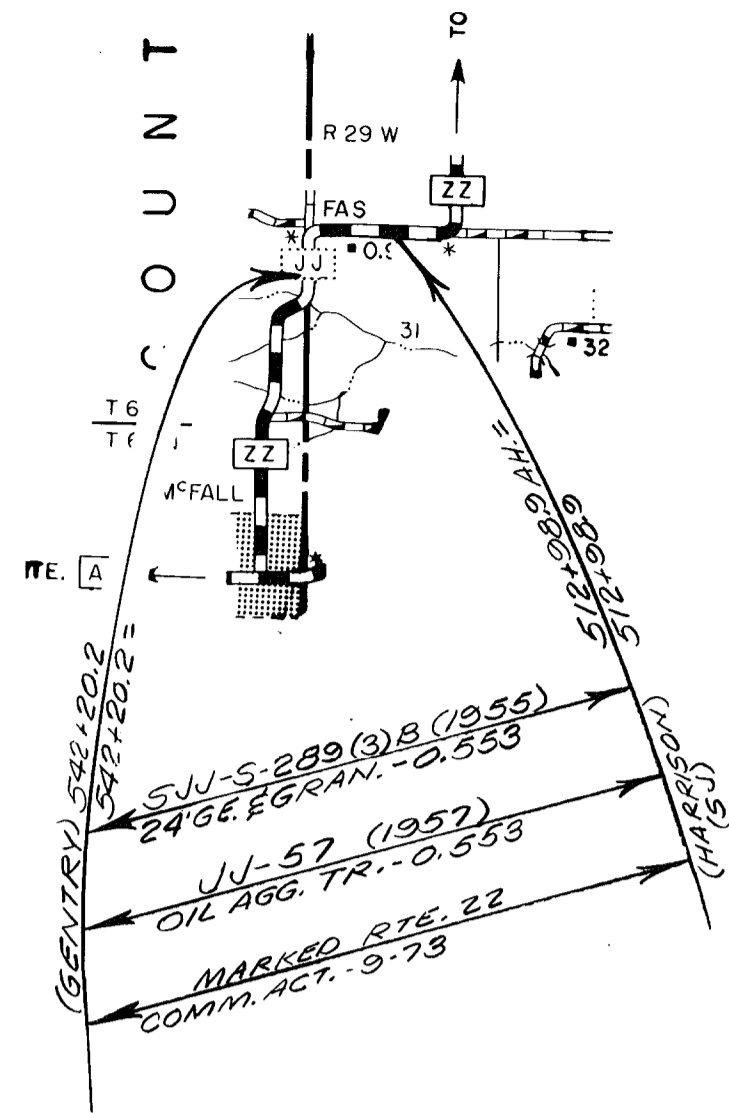
ROUTES B
VV
N

031 SHEET 6 OF 13

DAVISS

COUNTY

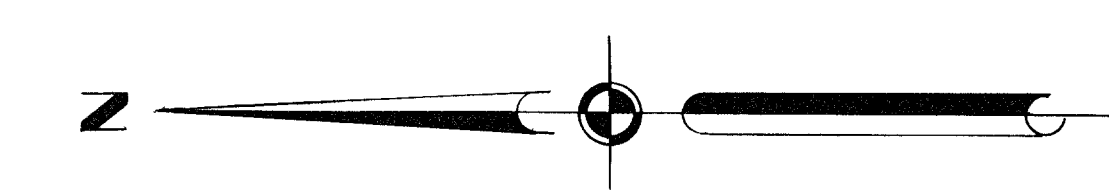
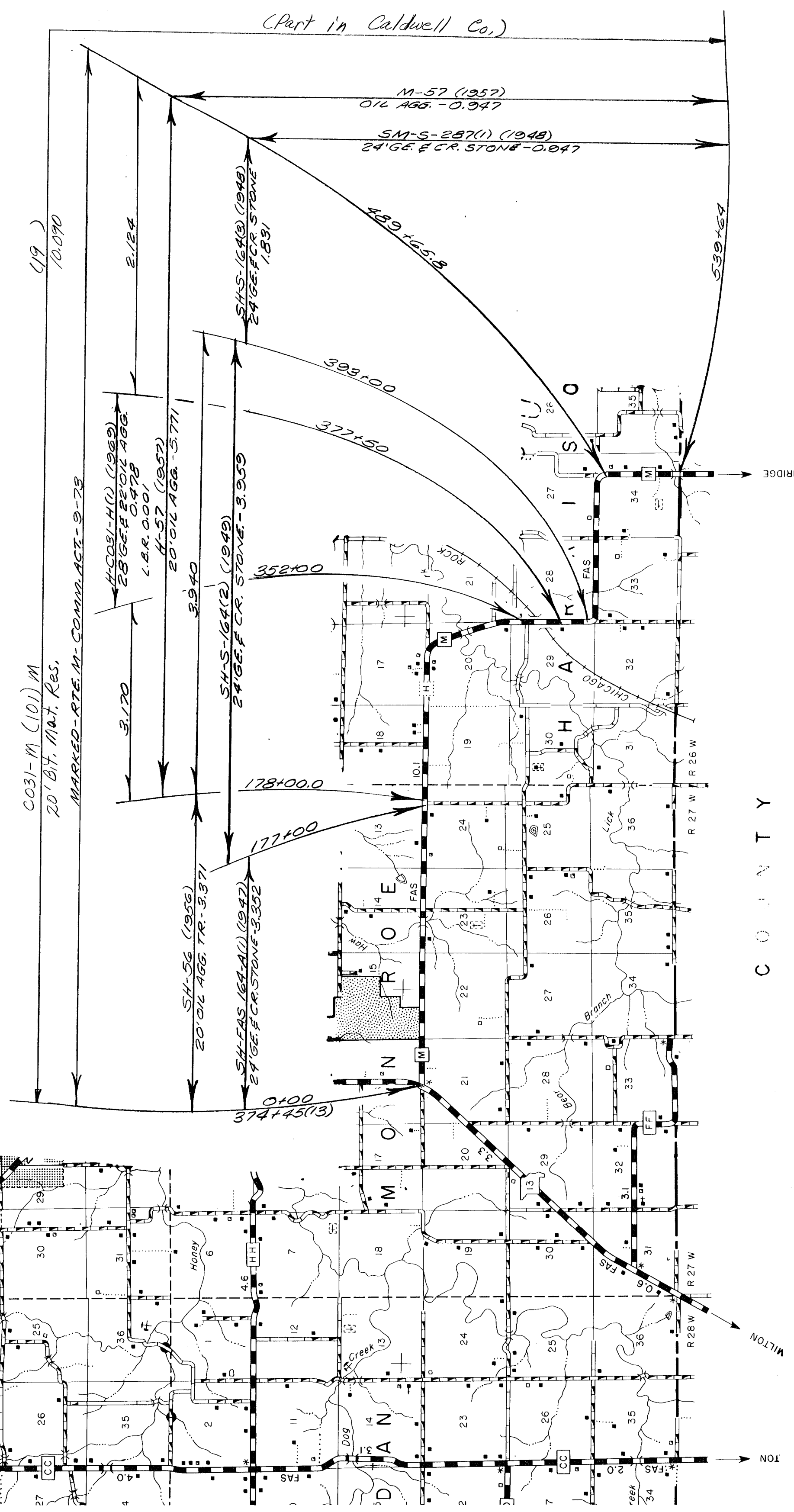
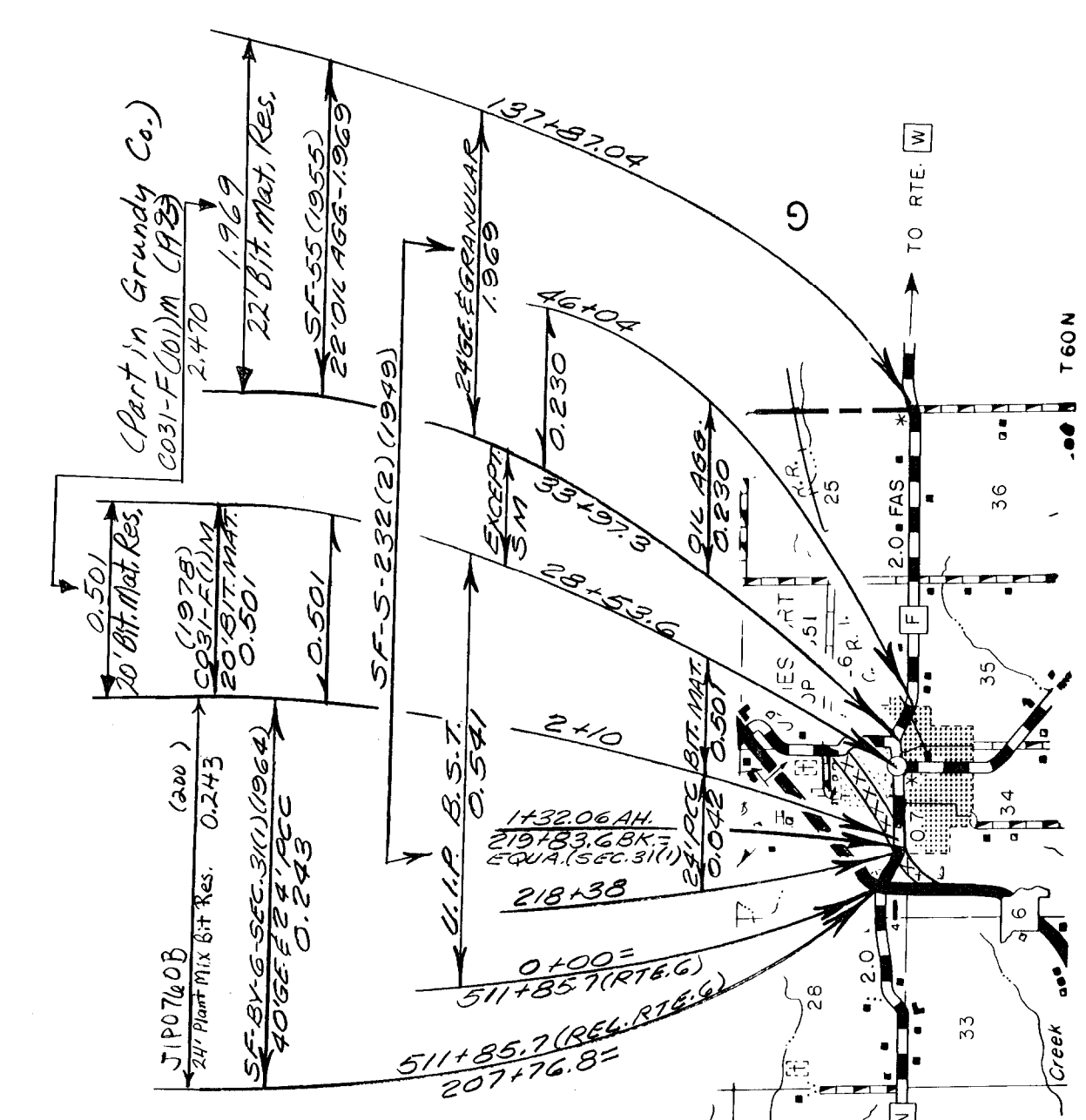
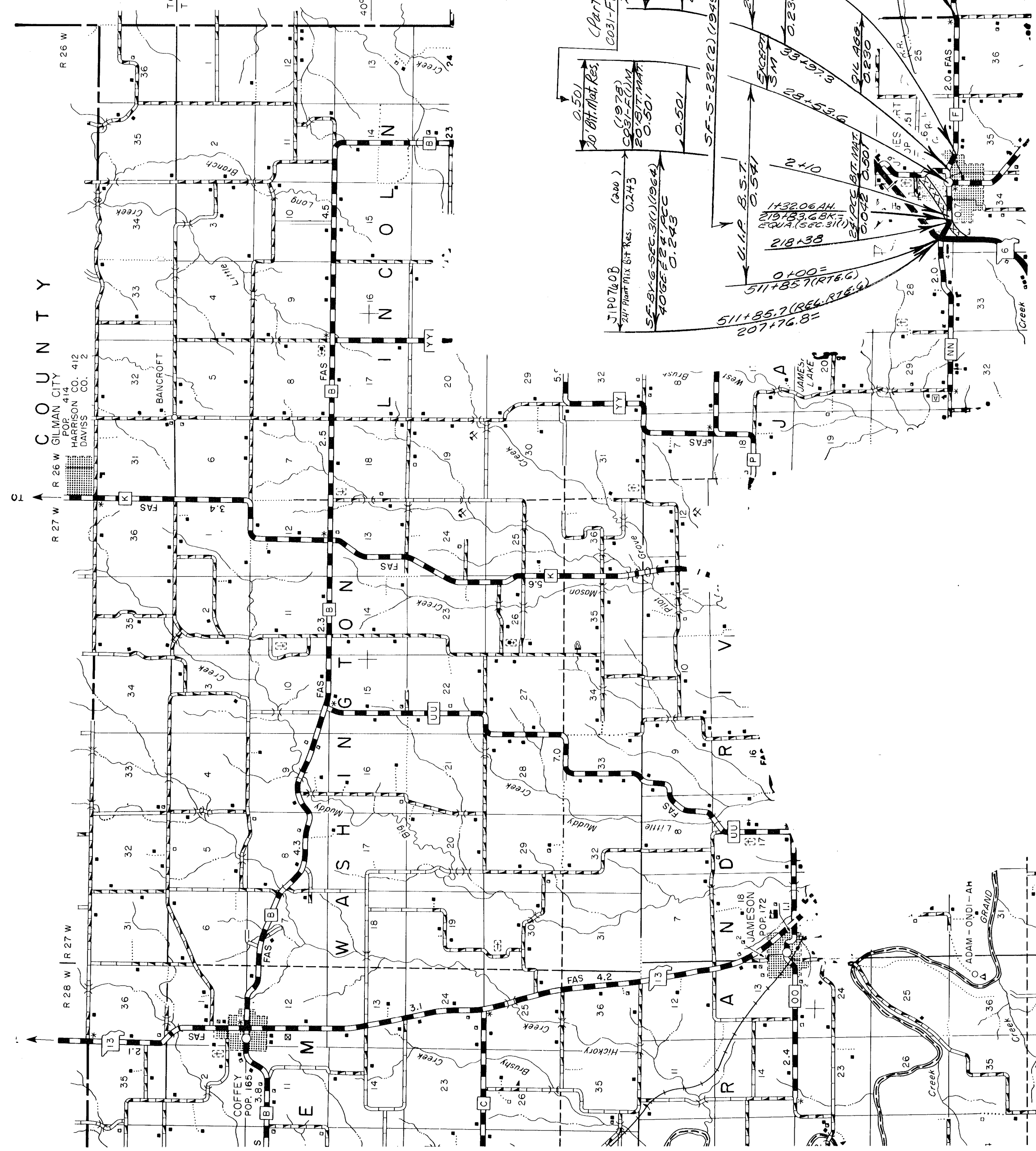
①



ROUTES C
O P P E
E Z Z
R A

① 031 SHEET 7 OF 13
DAVISS

COUNTY

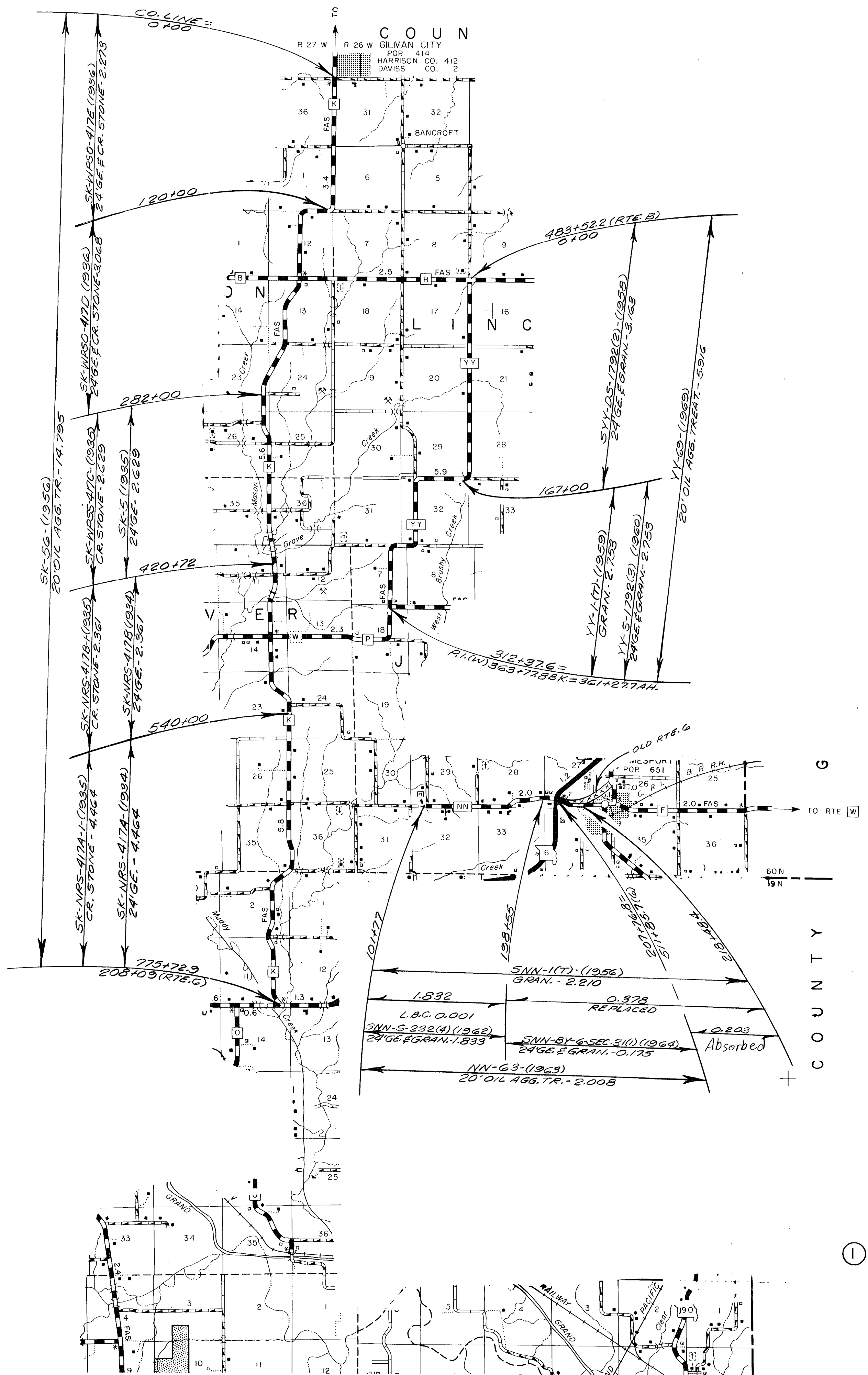
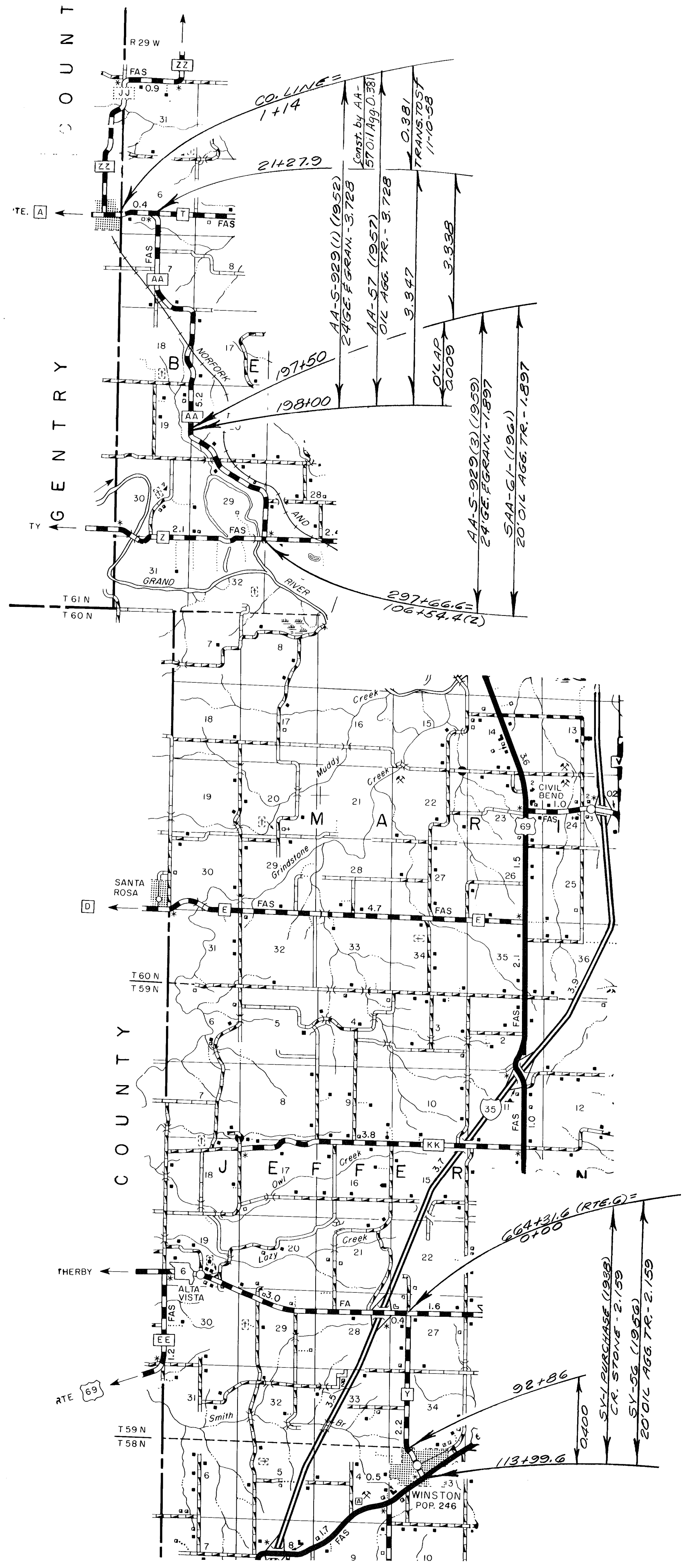


ROUTES F M

031 SHEET 8 OF 13 DAVIESS



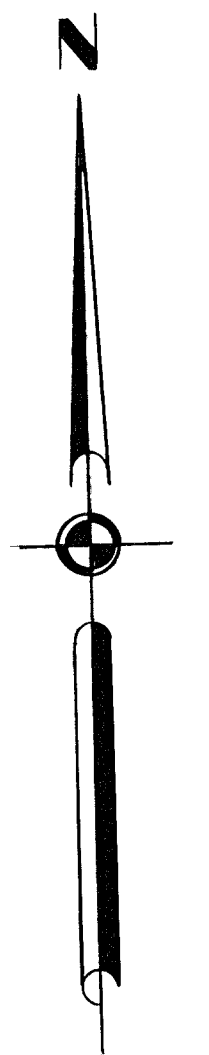
ROUTES J
T
DD
HH

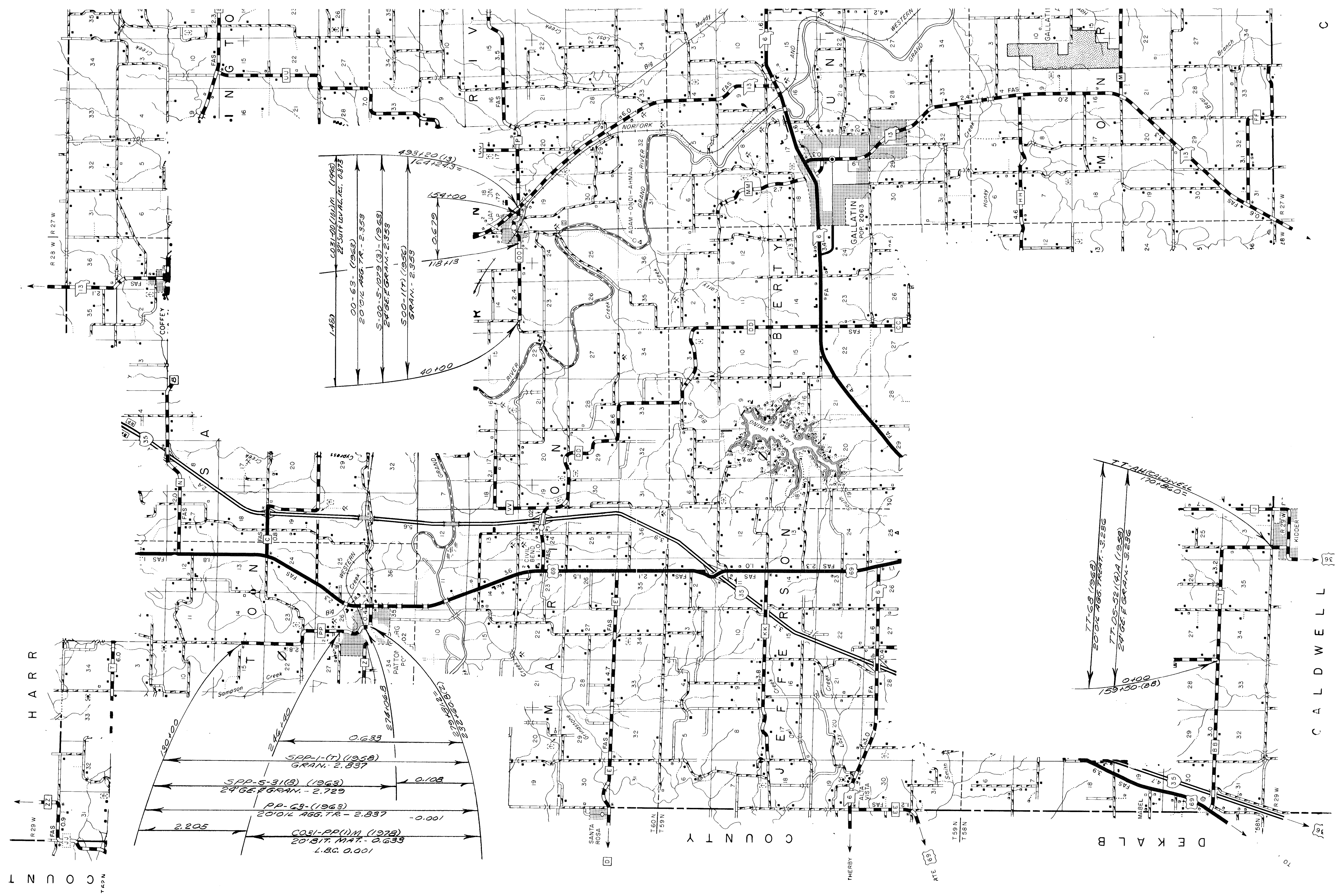


ROUTES K
Y
A
N
N
Y

① 031 SHEET 10 OF 13

DAVISS





COUNTY

COUNTY

DEKALB

CALDWELL

ROUTES

OO
PP
TT

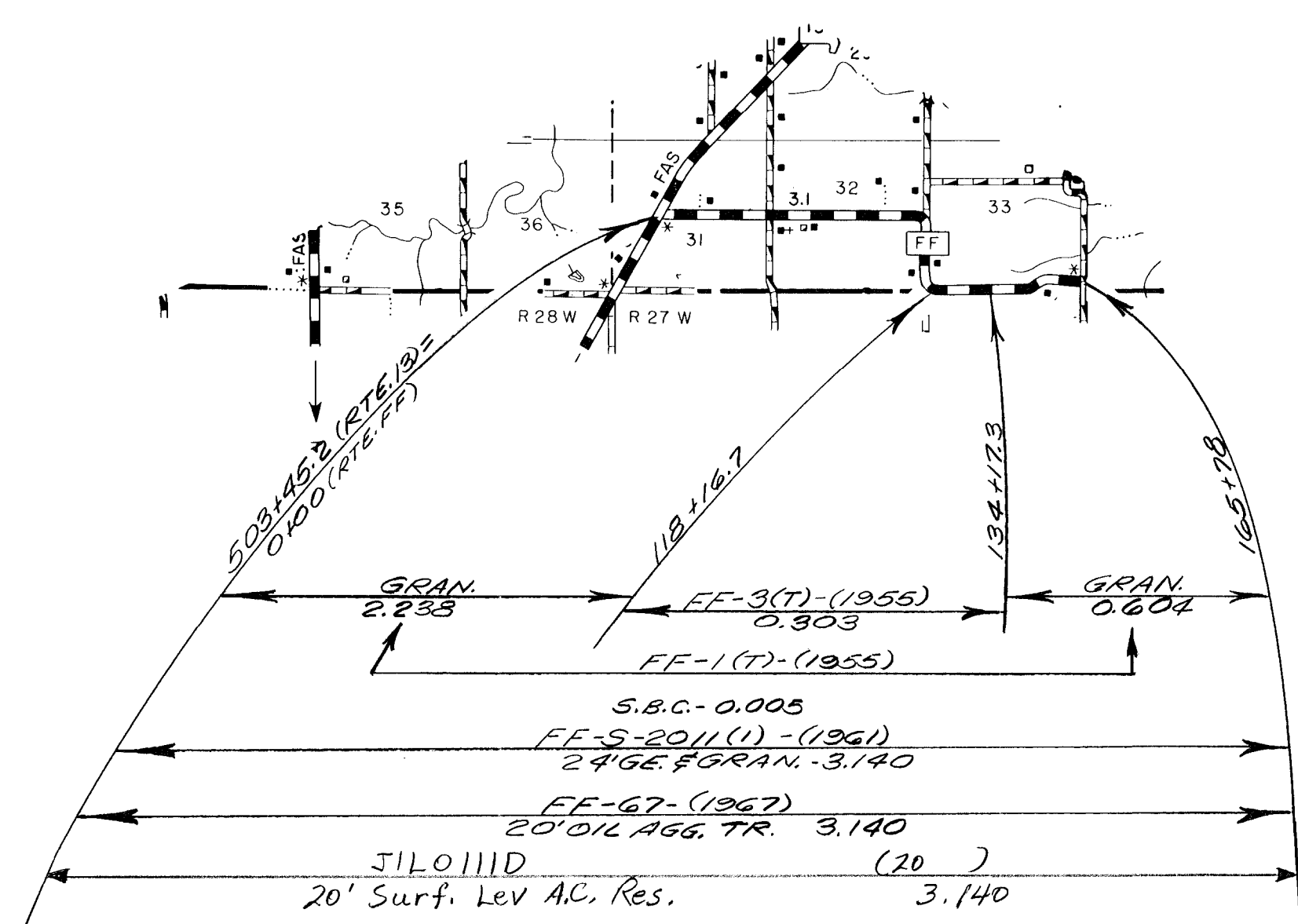
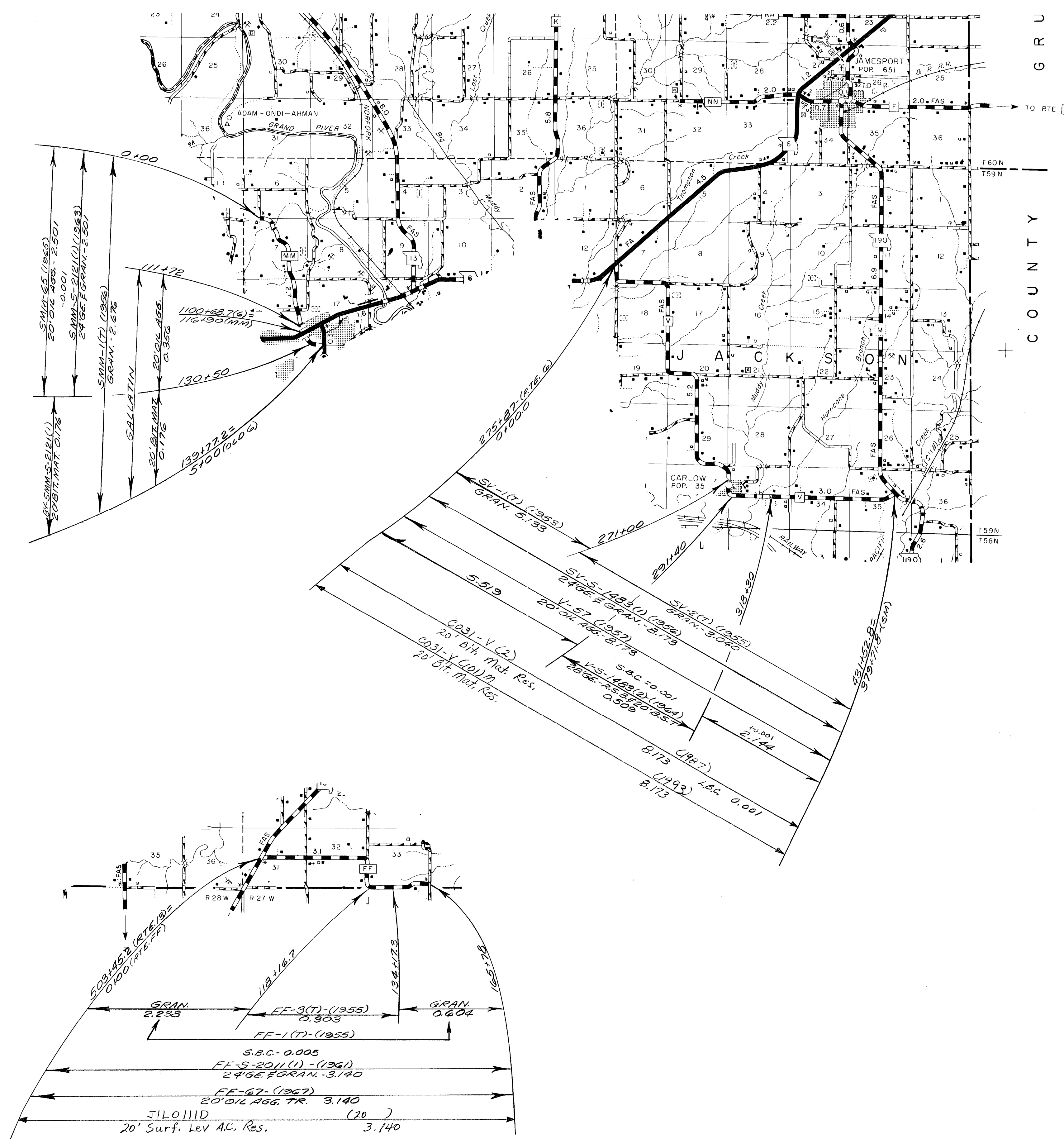
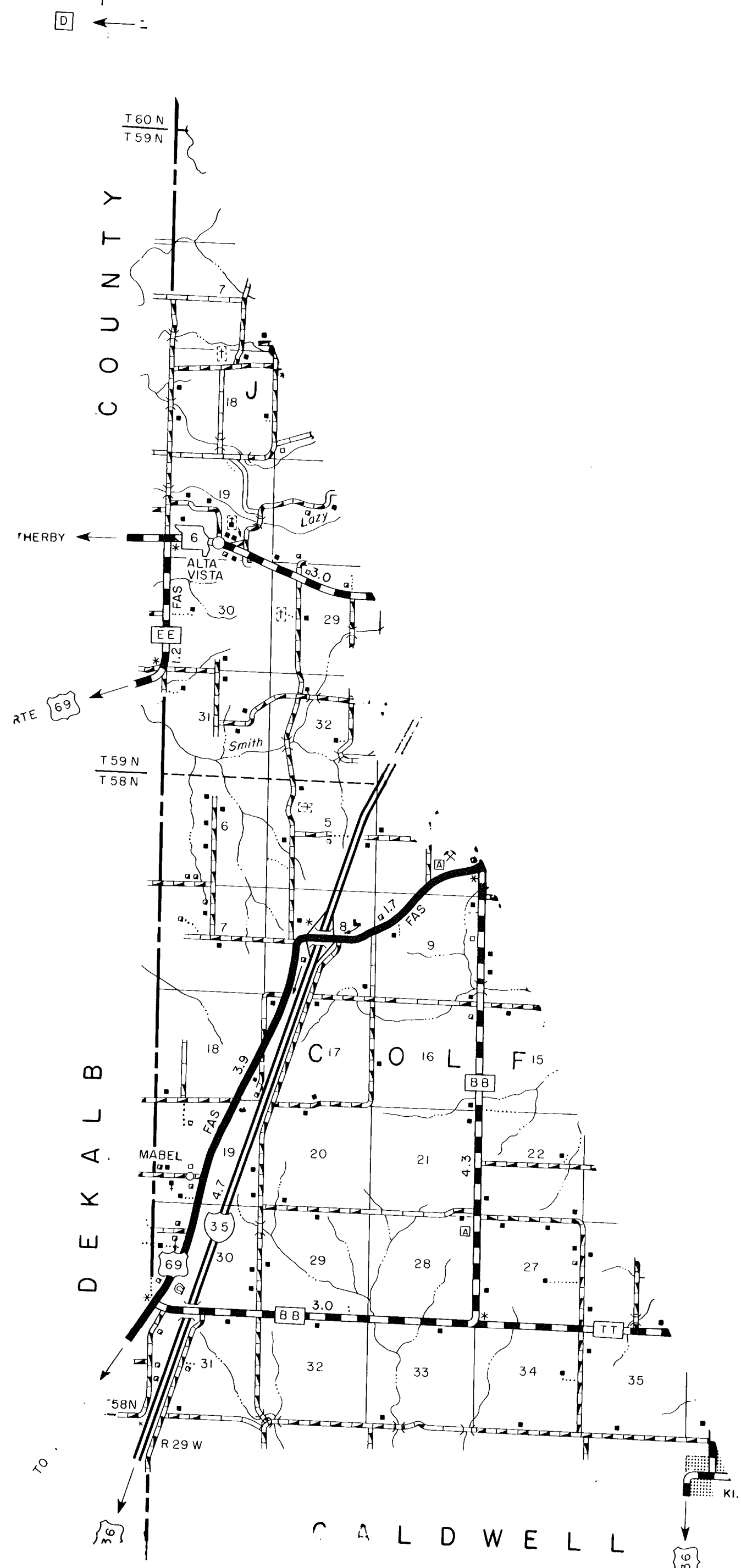
031 SHEET 11 OF 13

DAVISS

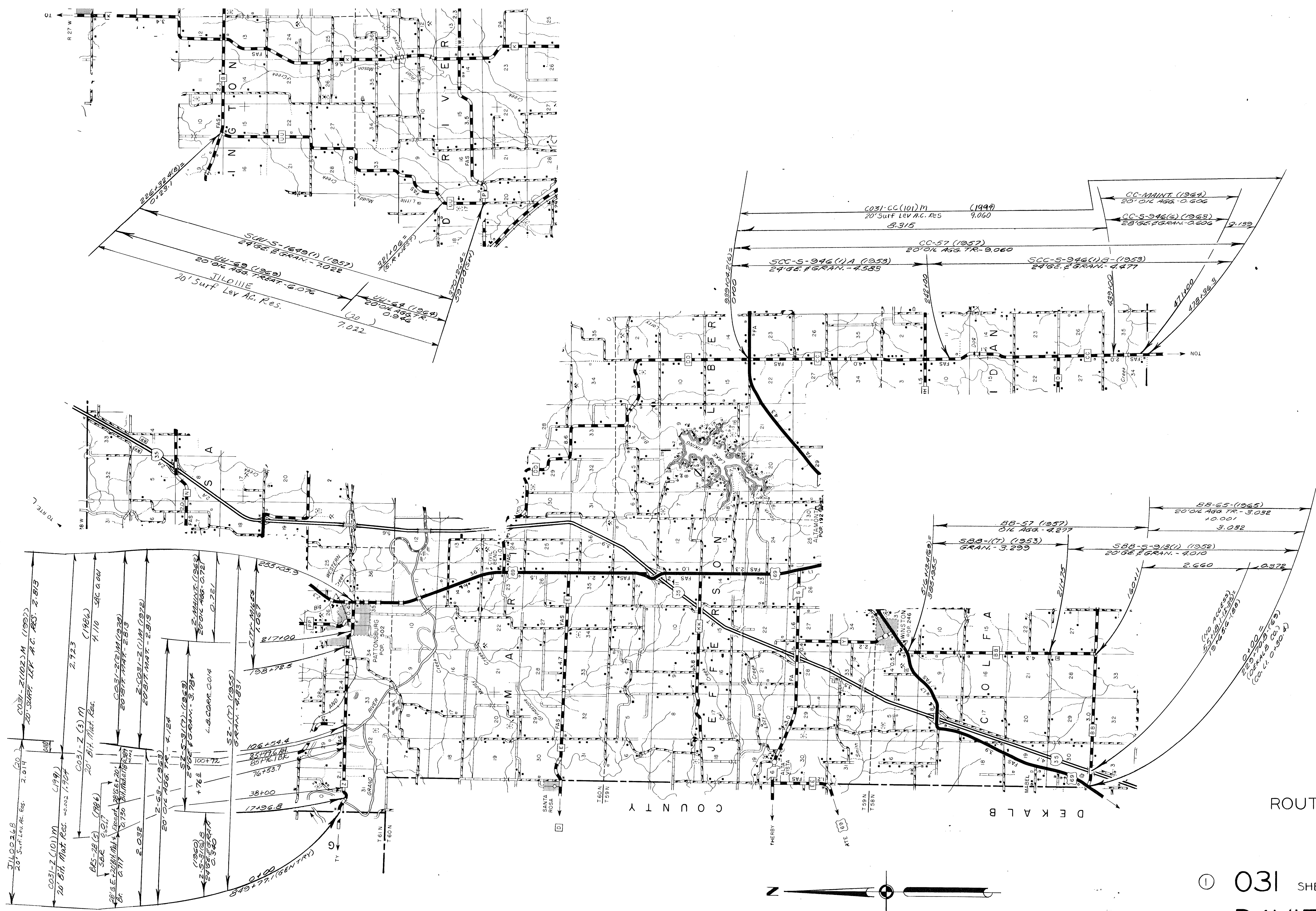
1.480
 CO-31-PP(1)M (1978)
 20' B.T. MAT. - 0.633
 00-63 (1963)
 20' O/L AGG. TR. - 2,353
 S-00-S/079(3) - (1963)
 24' GE. GRAN. - 2,353
 S-00-177 (1956)
 GRAN. - 2,353
 433,120 (1)
 164,120
 154,100
 118,113
 40,100

2.205
 CO-31-PP(1)M (1978)
 20' B.T. MAT. - 0.633
 L.B.C. 0.001
 PP-63 (1963)
 20' O/L AGG. TR. - 2,837
 SPP-5-31(B) (1963)
 24' GE. GRAN. - 2,729
 SPP-1 (T) (1958)
 GRAN. 2,837
 0.633
 274,106.8
 272,100.8 (2)
 0.108
 -0.001

0.100
 159,130 (18)
 TT-CB (1968)
 20' O/L AGG. TR. - 3,236
 TT-OS-32 (1974) (1969)
 24' GE. GRAN. - 3,236
 77-AUGHOWELL
 170,150.0



ROUTES V
FF
MM



ROUTES
 Z
 BB
 CC
 UU

① 031 SHEET 13 OF 13
 DAVIESS