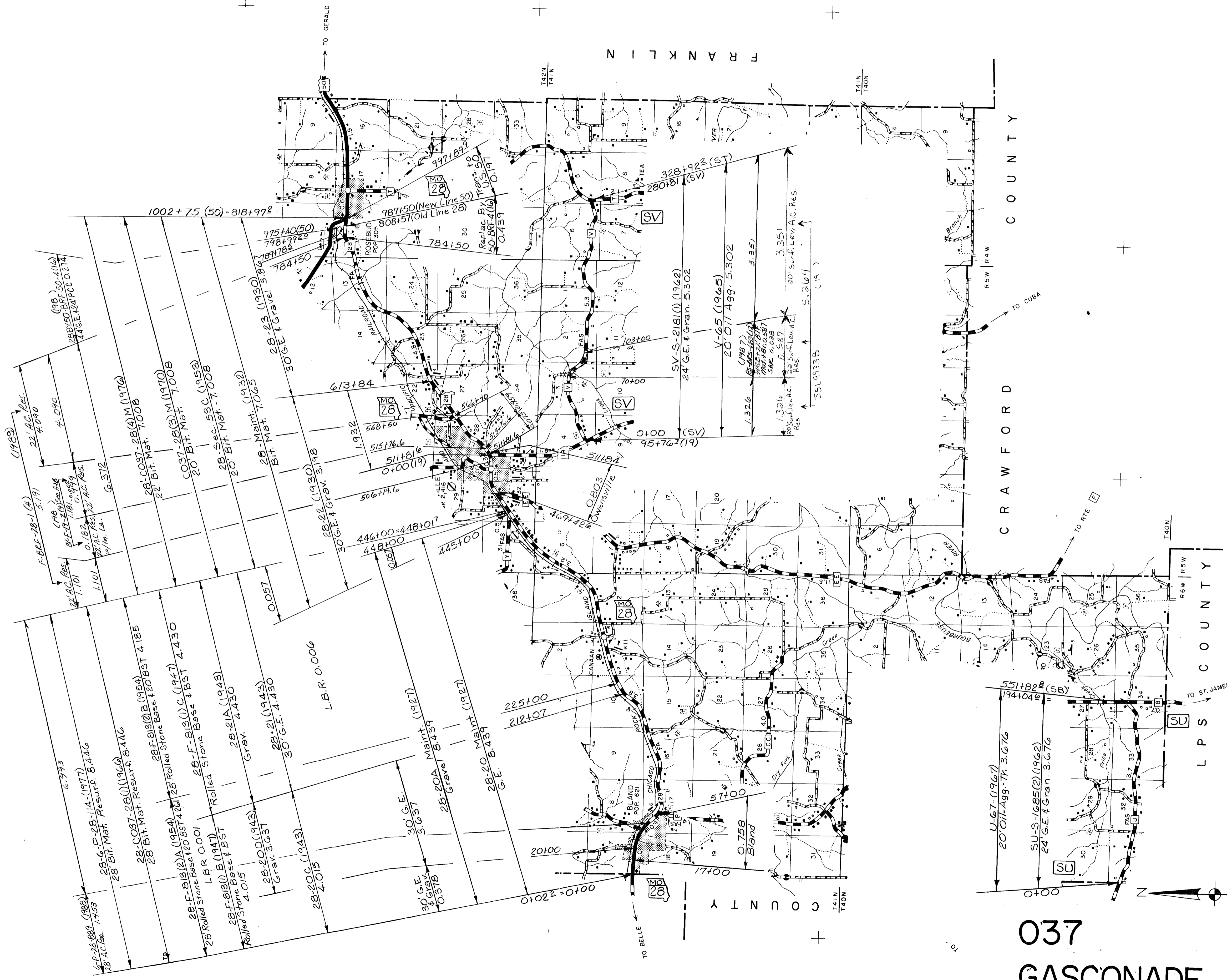
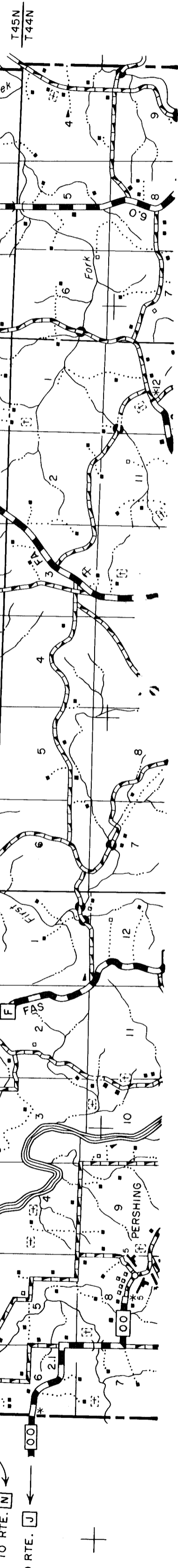


037
 GASCONADE
 ROUTE: 19
 SHEET 1 OF 11

INT



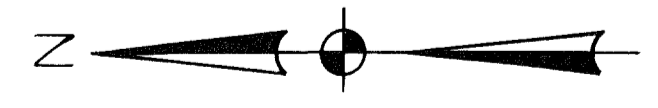
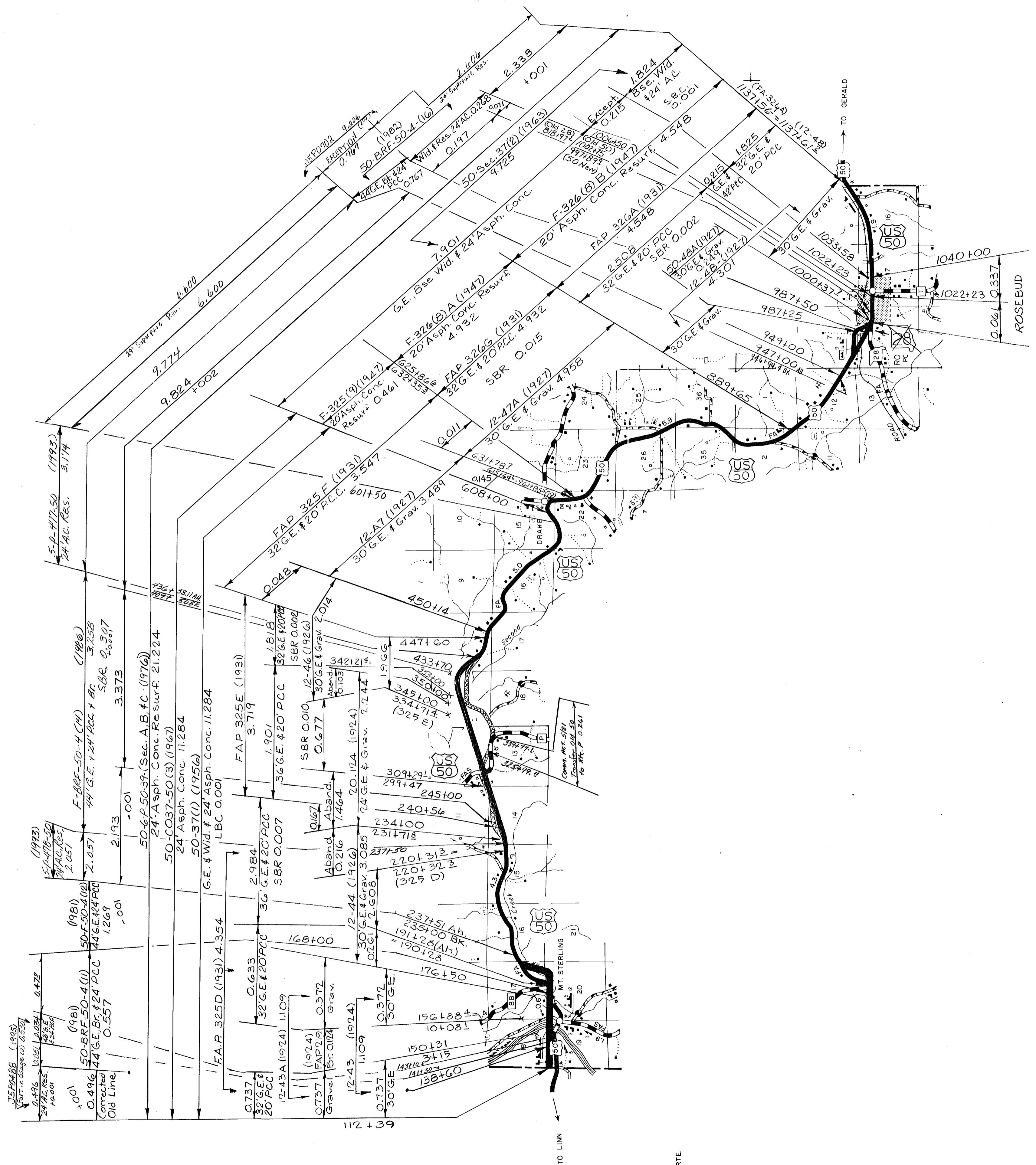
037

GASCONADE

ROUTES: 28,V,U

SHEET 2 OF 11

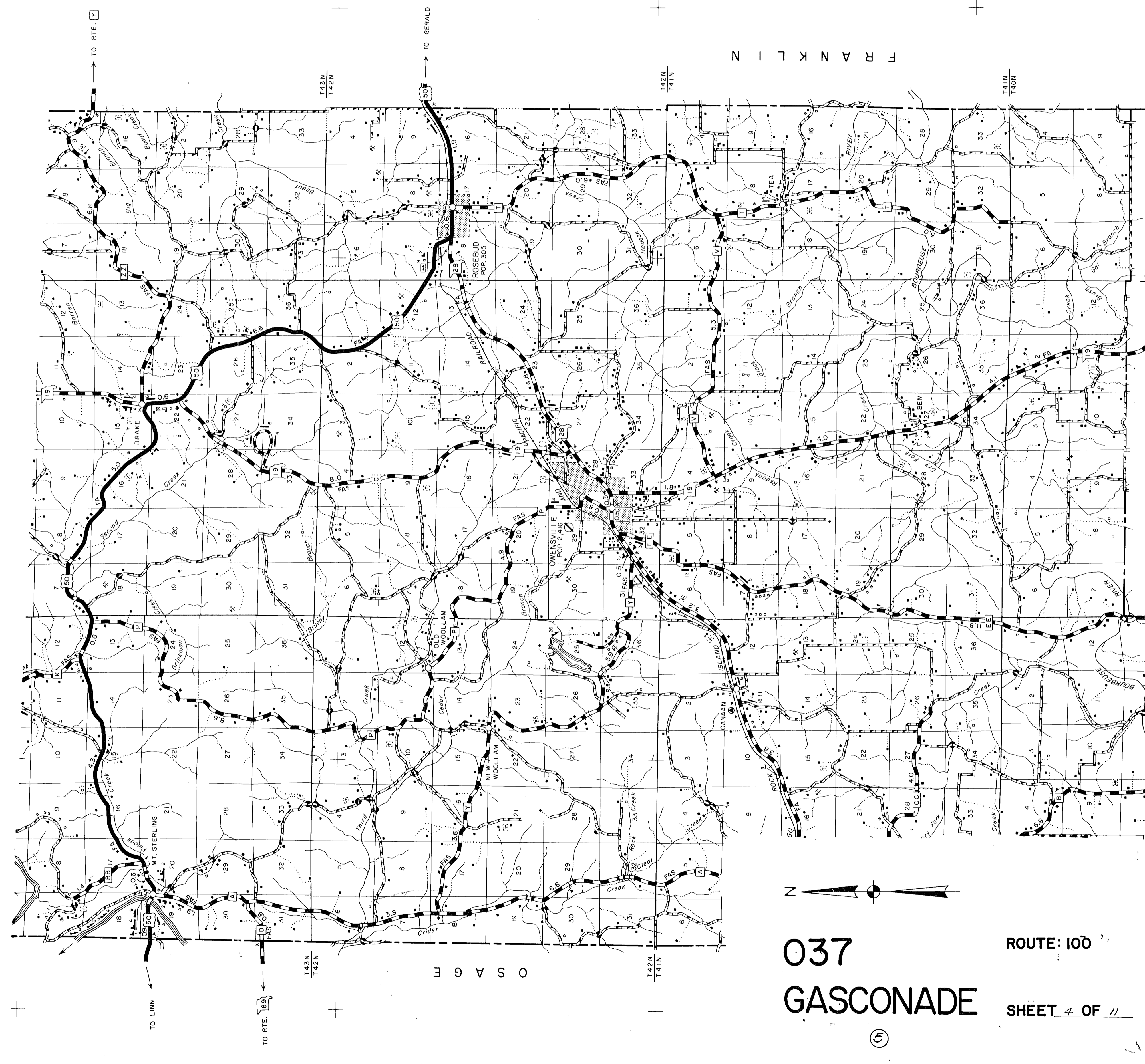
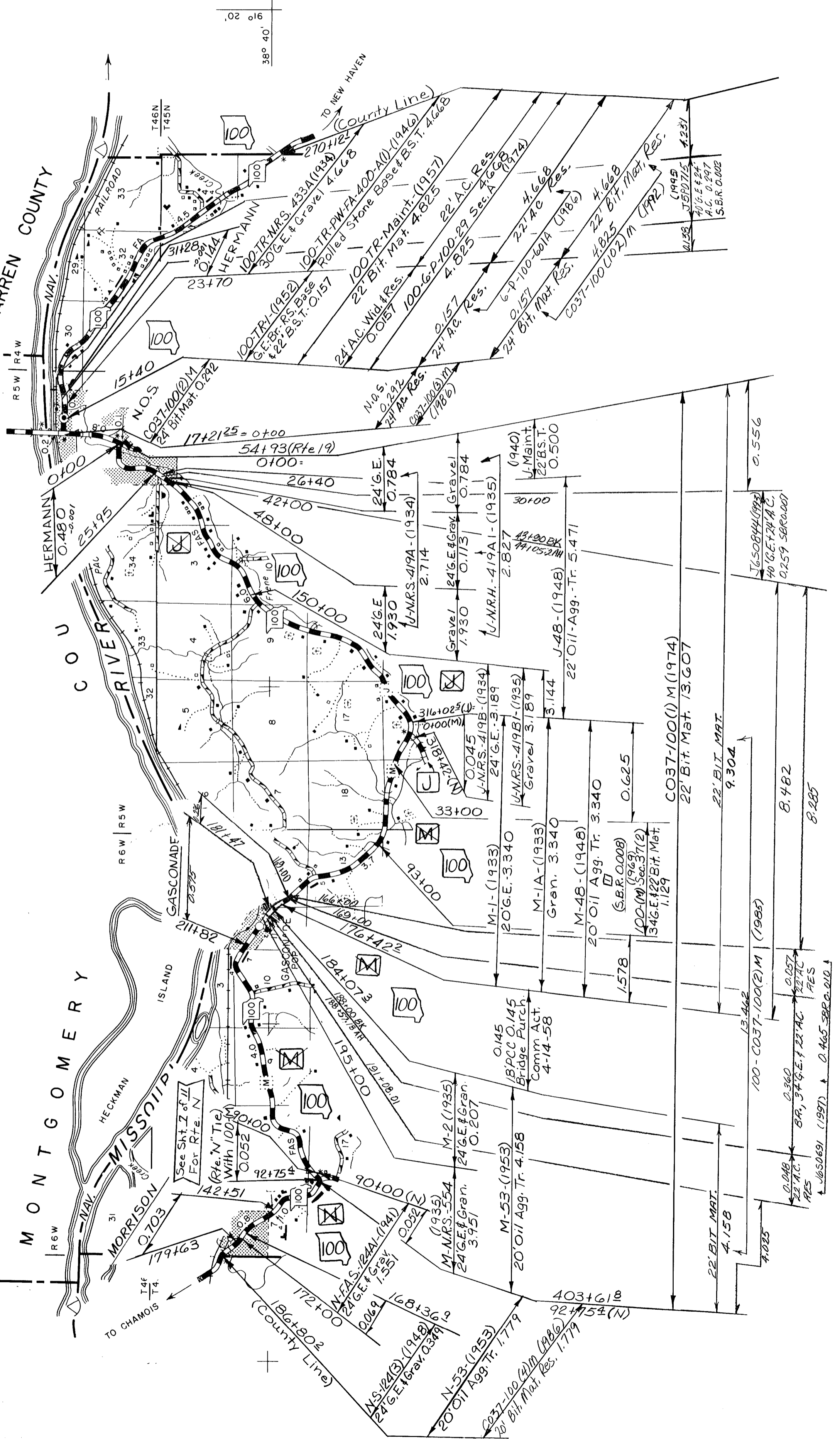
5

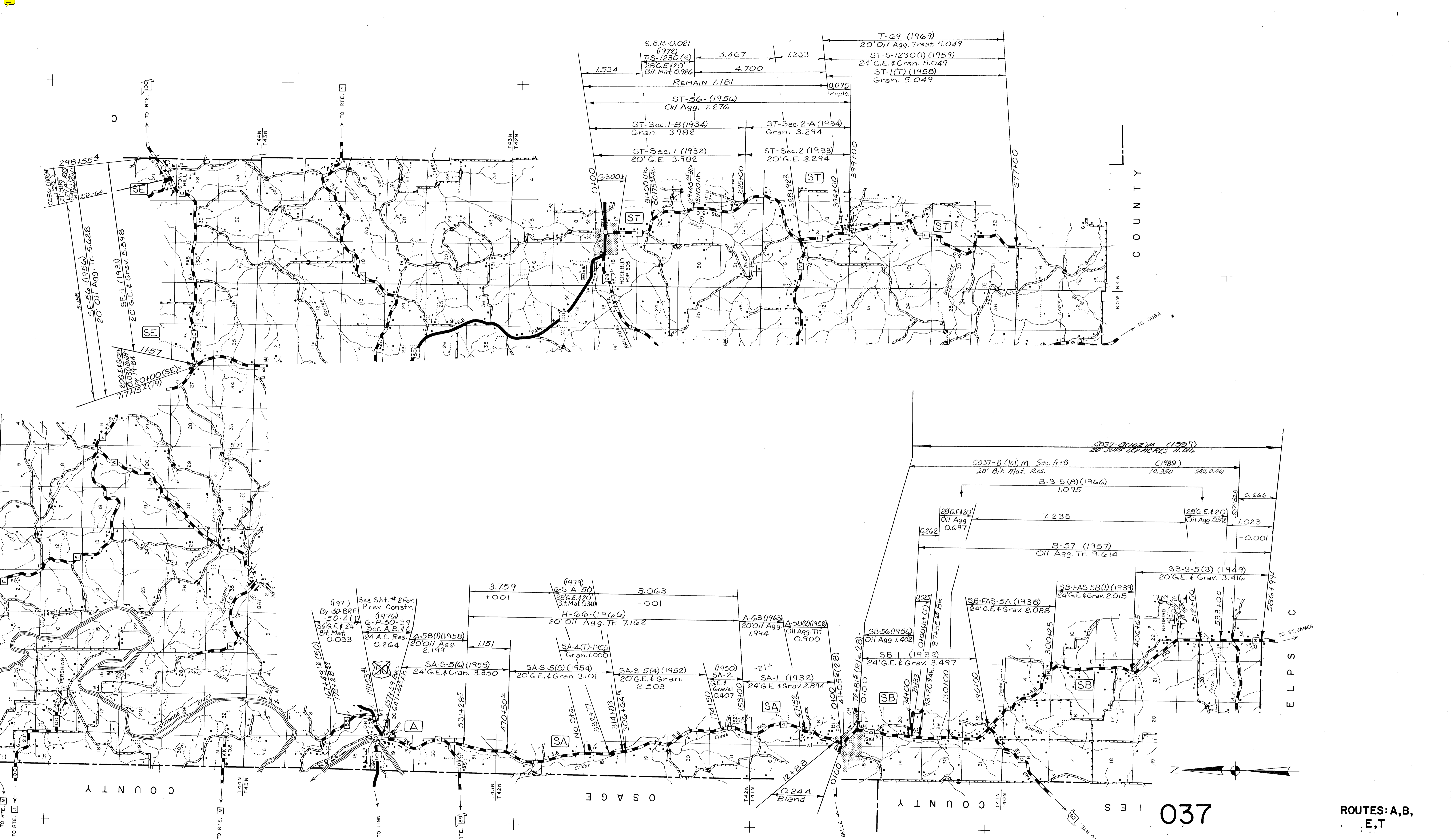


037
GASCONADE

ROUTE: 50

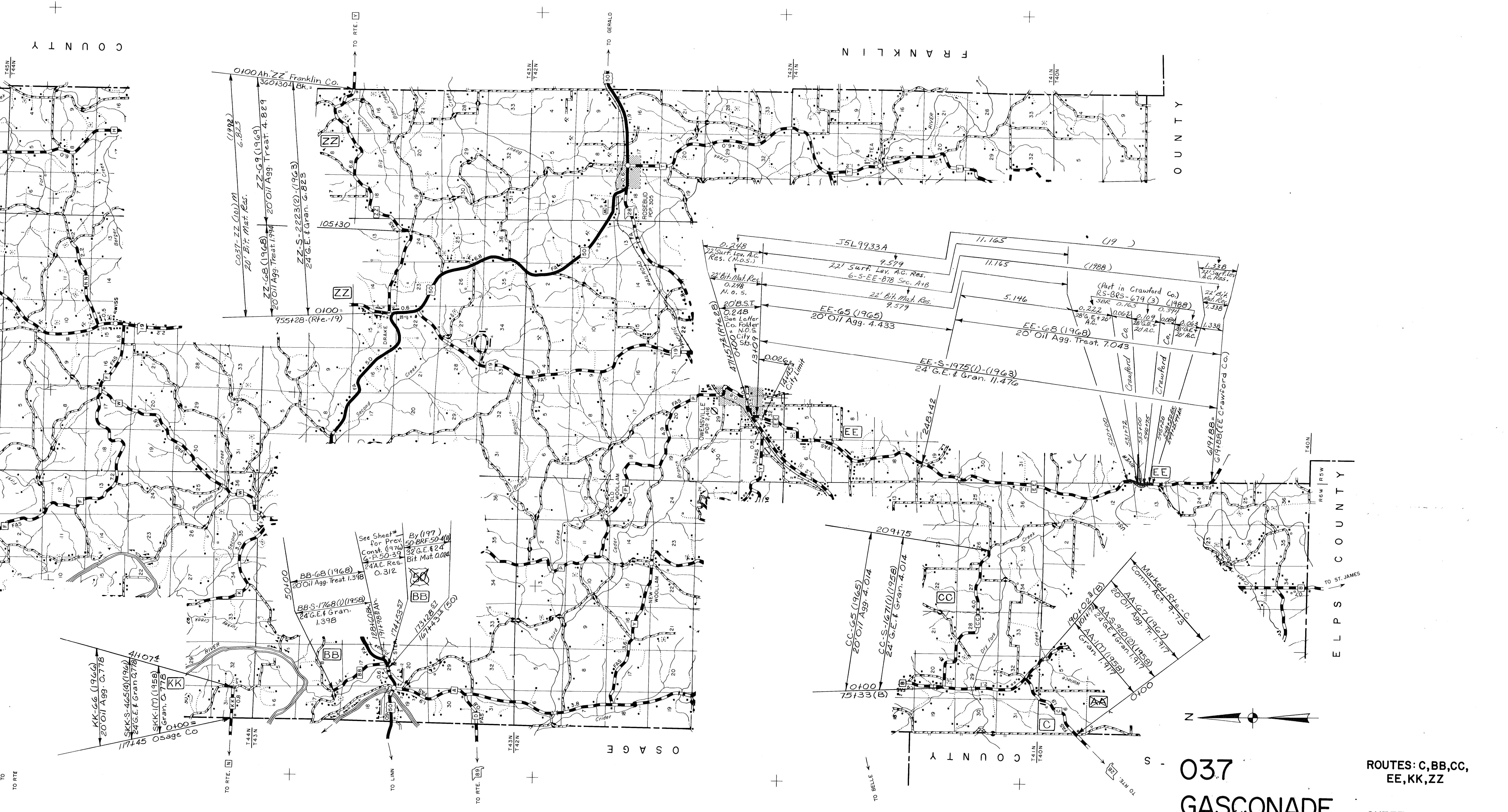
SHEET 3 OF 11





037 GASCONADE

ROUTES: A, B,
E, T
SHEET 5 OF 11



COUNTY

FRANKLIN

COUNTY

ELPS COUNTY

COUNTY

037 GASCONADE

ROUTES: C, BB, CC, EE, KK, ZZ

SHEET 6 OF 11

5

0100 Ah. ZZ Franklin Co.
3601304 BK. =
(1992)
COST-ZZ Coal M
20' Bit. Mat. Res. 6.823
ZZ-G8 (1968)
20' Oil Agg. Treat. 4.829
ZZ-S-2223(2)-(1963)
24' G.E. & Gran. G.823

0.248
22' Surf. Lev. A.C. Res. (N.O.S.)
22' Bit. Mat. Res. 0.248 N.O.S.
0.248
See Letter Co. Folger N.O.S. City Sts.
474572 (Rte. 28)
13+09
0.026
17445
City Limit
J5L9933A
9.579
22' Surf. Lev. A.C. Res. 6-S-EE-878 Sec. A+B
22' Bit. Mat. Res. 9.579
EE-G5 (1965)
20' Oil Agg. 4.433
11.165
11.165
11.165
(1988)
5.146
EE-S-1975(1)-(1963)
24' G.E. & Gran. 11.476
(Part in Crawford Co.)
RS-BRS-679(3) (1988)
SBR 0.165
0.222
0.062
0.107
0.064
0.064
0.397
28' G.E. + 20' A.C.
20' A.C.
20' A.C.
20' A.C.
20' A.C.
1.338
1.338
22' Surf. Lev. A.C. Res. 1.338

See Sheet #
for Prev. Const. (1970)
G-P-50-39
24' A.C. Res. 0.312
By (197)
50-BRF-50-40
32' G.E. & 24' Bit. Mat. 0.084
BB-G8 (1968)
20' Oil Agg. Treat. 1.398
BB-S-1768(1) (1958)
24' G.E. & Gran. 1.398
12810 BK
19178 BK
174153-57
173128-37
167145-54 (50)

KK-G6 (1966)
20' Oil Agg. 0.778
41074
SKK-S-465(4) (1966)
24' G.E. & Gran. 0.778
SKK-IT (1958)
Gran. 0.778
0100 =
Osage Co.

209175
CC-G5 (1965)
20' Oil Agg. 4.014
CC-S-1671(1) (1958)
24' G.E. & Gran. 4.014
AA-S-220(2) (1958)
24' G.E. & Gran. 1.917
AA-IT (1958)
Gran. 1.917
1701023 (E)
20' Oil Agg. 1.917
AA-S-627 (1967)
20' Oil Agg. 1.917
Marked Rte. C
Comm. Act. 9-7-73

TO RTE

TO RTE

TO LINN

TO RTE

TO BELLE

TO ST. JAMES

TO RTE

TO GERALD

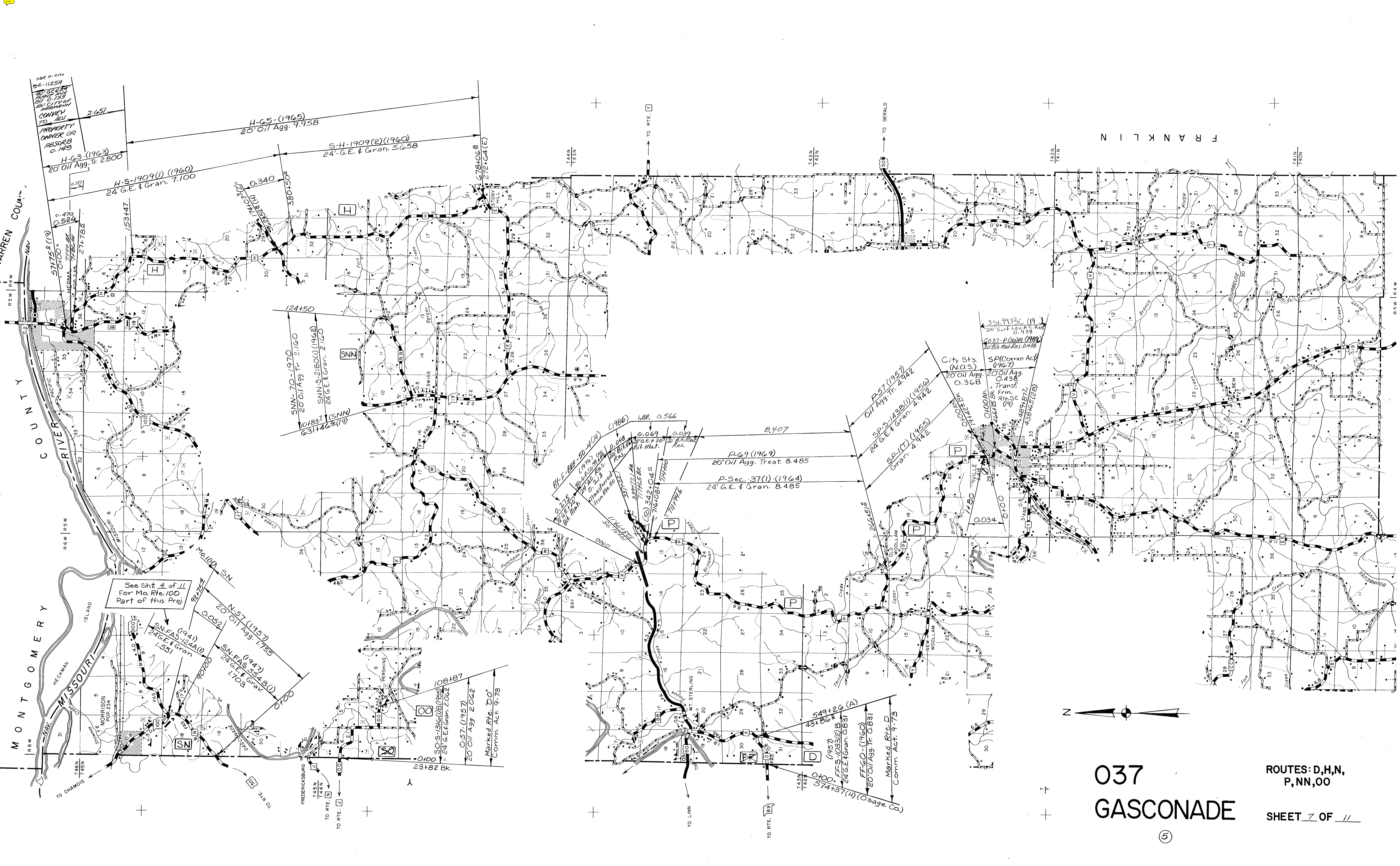
TO BELLE

TO RTE

TO RTE

TO RTE

TO RTE



037
GASCONADE

ROUTES: D,H,N,
P,NN,00
SHEET 7 OF 11

MONTGOMERY COUNTY
HENRY COUNTY
FRANKLIN COUNTY
ARREN COUNTY

See Sht. 4 of 11
For Mo. Rte. 100
Part of this Proj.

382 0.014
94-1125A
PROPERTY
OWNER OR
ABSORBER
0.143
H-63-(1963)
20' Oil Agg. Tr. 2,800

H-65-(1965)
20' Oil Agg. 9,958
S-H-1909(2)(1960)
24' G.E. & Gran. 5,658
H-S-1909(1)(1960)
24' G.E. & Gran. 7,100

SNN-70-1970
20' Oil Agg. Tr. 2,160
SNN-S-2180(1)(1962)
24' G.E. & Gran. 2,160
101837 (SNN)
631465(19)

P-69(1969)
20' Oil Agg. Treat. 8,485
P-Sec. 37(1)-(1964)
24' G.E. & Gran. 8,485

P-57(1957)
Oil Agg. Tr. 4,942
SPS-1438(1)(1956)
24' G.E. & Gran. 4,942
SP-1(7)(1955)
Gran. 4,942

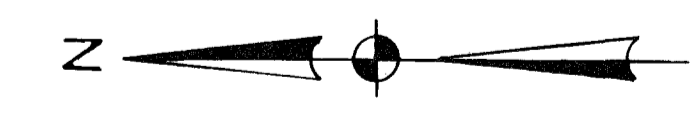
City St's
(N.O.S.)
20' Oil Agg.
0.368

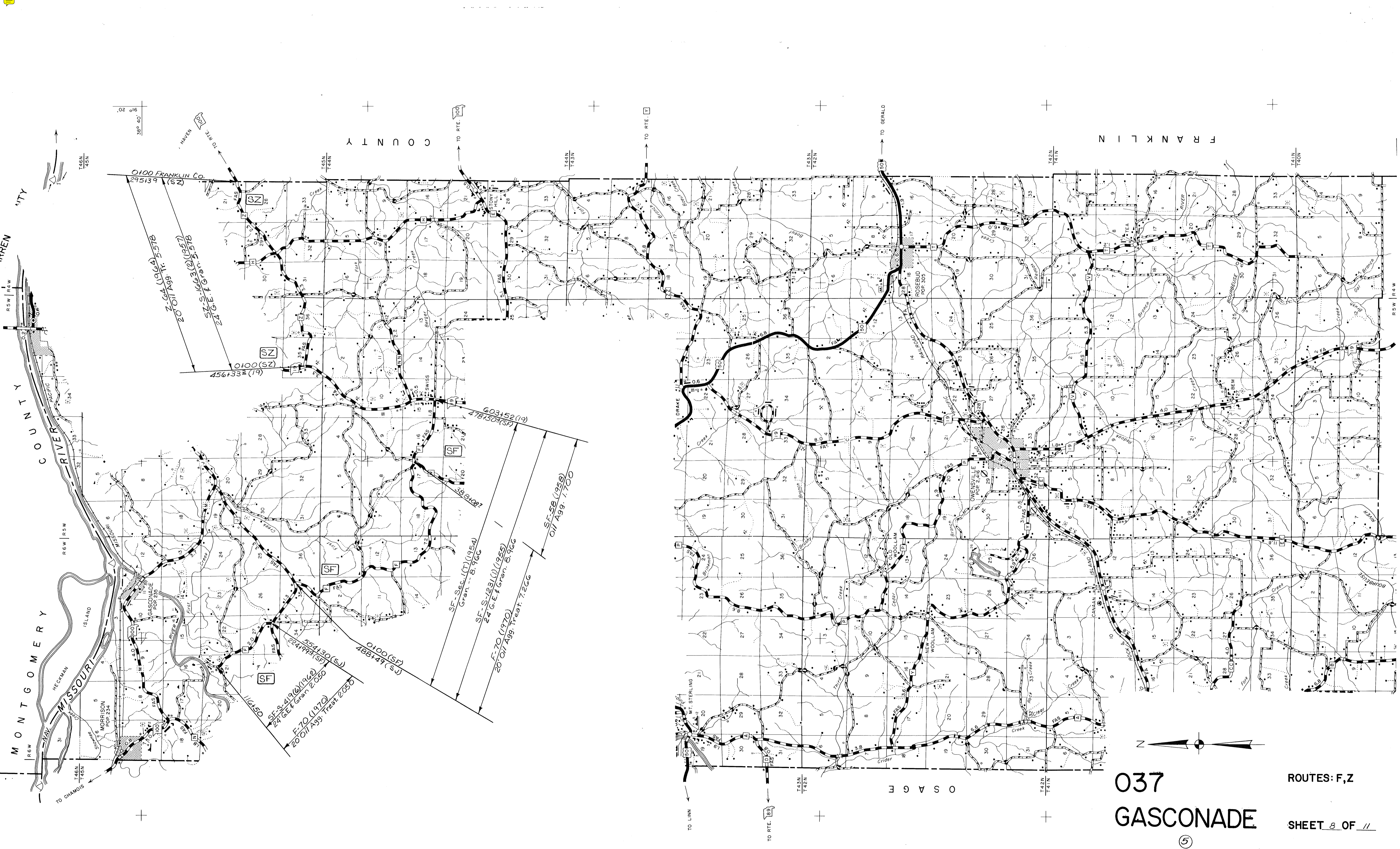
SP(Comm Act)
(1967)
20' Oil Agg.
0.438
Transf.
Frm.
Rte. 100
(S.S.)
4894872
4894875
4894878

SN-FAS-124A(1)
(1941)
24' G.E. & Gran.
1,551
SN-FAS-554-B(1)
(1947)
24' G.E. & Gran.
1,703

SO-S-1316(1)(1955)
24' G.E. & Gran. 2,062
0.57-(1957)
20' Oil Agg. 2,062
Marked Rte. '00'
Comm. Act. 9-73

599+26 (A)
43,866
FFS-1033(2)(B)
(1957)
24' G.E. & Gran. 0.83
FFGO-(1960)
20' Oil Agg. Tr. 0.831
Marked Rte. D
Comm. Act. 9-73





MONTGOMERY COUNTY

COUNTY

FRANKLIN

OSAGE

037
GASCONADE

ROUTES: F,Z

SHEET 8 OF 11

5

0100 FRANKLIN CO. 295139 (SZ)

20 011199 N. 5518
SZ-S-663 (2) (1957)
24 GE-E-16 (a) 5518

0100 (SZ)
456+333 (19)

603+52 (19)
478+50 (SF)

SF-Sec. (T) (1954)
Gran. - 8.9 GC

SF-S-123 (1) (1955)
24 GE-E-4 Gran. 8.9 GC

F-70 (1970)
20 Oil Agg. Treat. 7.2 GC

SF-58 (1958)
Oil Agg. 1.00

551130 (SZ)
244448 (SF)
0100 (SF)
(S-67897)
488149

SF-S-419 (6) (1962)
24 GE-E-4 Gran 2.050

F-70 (1970)
20 Oil Agg. Treat. 2.050

116450

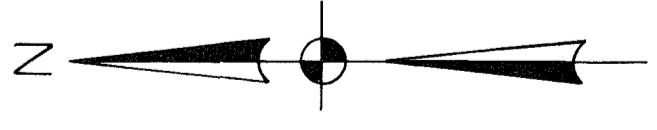
GASCONADE
POP. 233

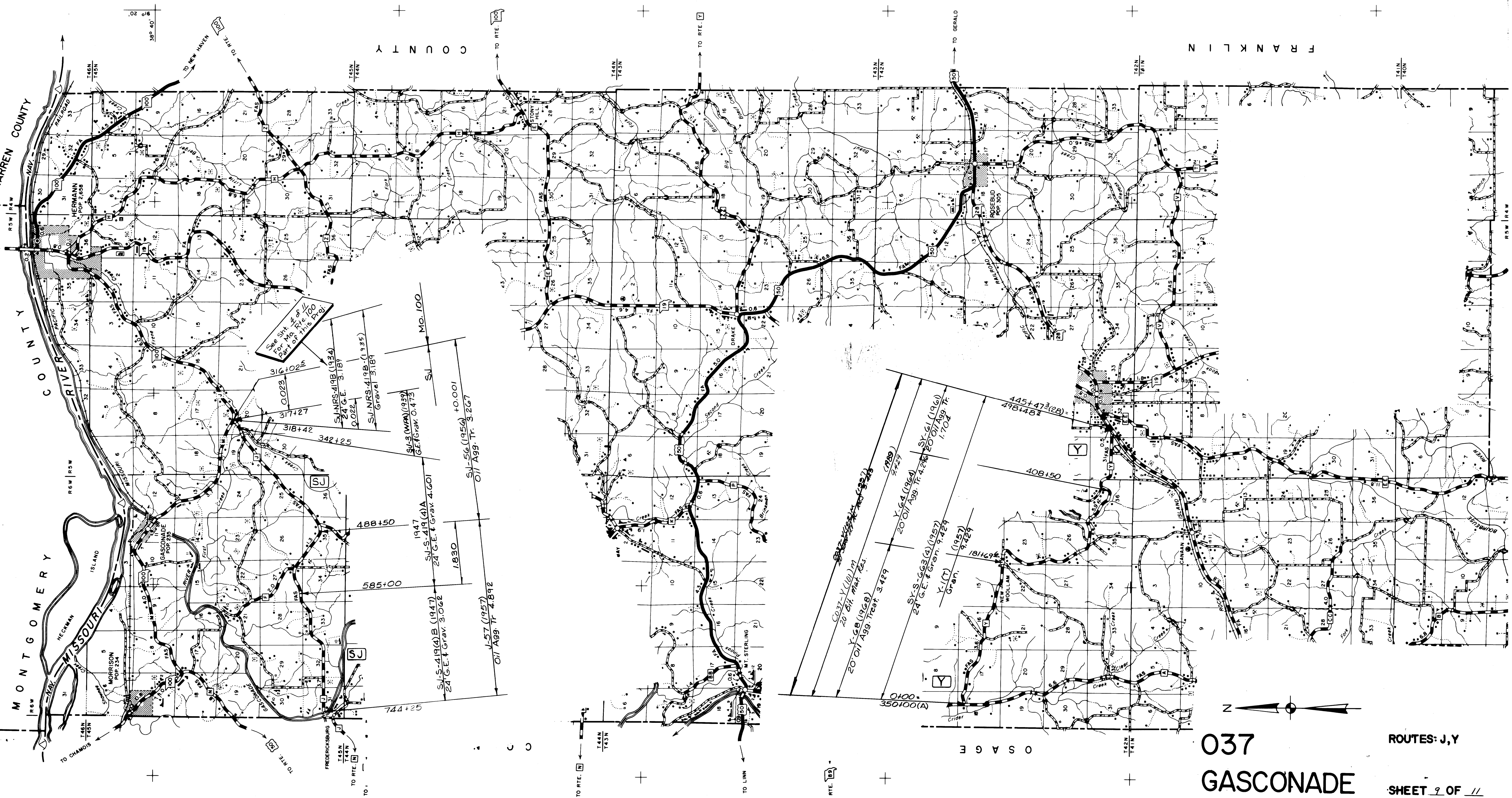
MORRISON
POP. 234

ROSEBUD
POP. 305

OWENSVILLE
POP. 216

NEW WOOLLAM





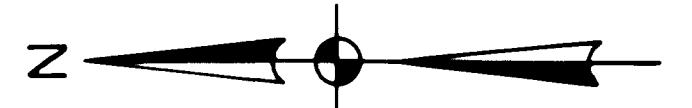
C O U N T Y

F R A N K L I N

M O N T G O M E R Y C O U N T Y

037
GASCONADE

ROUTES: J, Y
SHEET 9 OF 11



See Sht. 42 of 47
For Mo. Rte. 100
Part of this Pol.

316+02.5
0029
317+27
318+42
342+25
SUNRS-410B (1934)
24 G.E. & Grav. 5.187
SUNRS-419B (1935)
Gravel 3.189

MO. 100
SU
SUNRS-419A (1939)
G.E. & Grav. 0.473
SU-56 (1956) +0.001
Oil Agg. Tr. 3.267

1947
SU-S-419(4)A
24 G.E. & Grav. 4.601
1.830
SU-S-419(4)B (1947)
24 G.E. & Grav. 3.062
J-57 (1957)
Oil Agg. Tr. 4.892

744+25

0100.
350+00(A)
CO37-Y (1964)
20 Oil Agg. Tr. 4.436
Y-68 (1968)
20 Oil Agg. Treat. 3.429
Y-64 (1964)
20 Oil Agg. Tr. 4.436
Y-61 (1961)
20 Oil Agg. Tr. 1.704
Y-67 (1967)
Gravel 9.229
Y-66 (1966)
Gravel 9.229
Y-65 (1965)
Gravel 9.229

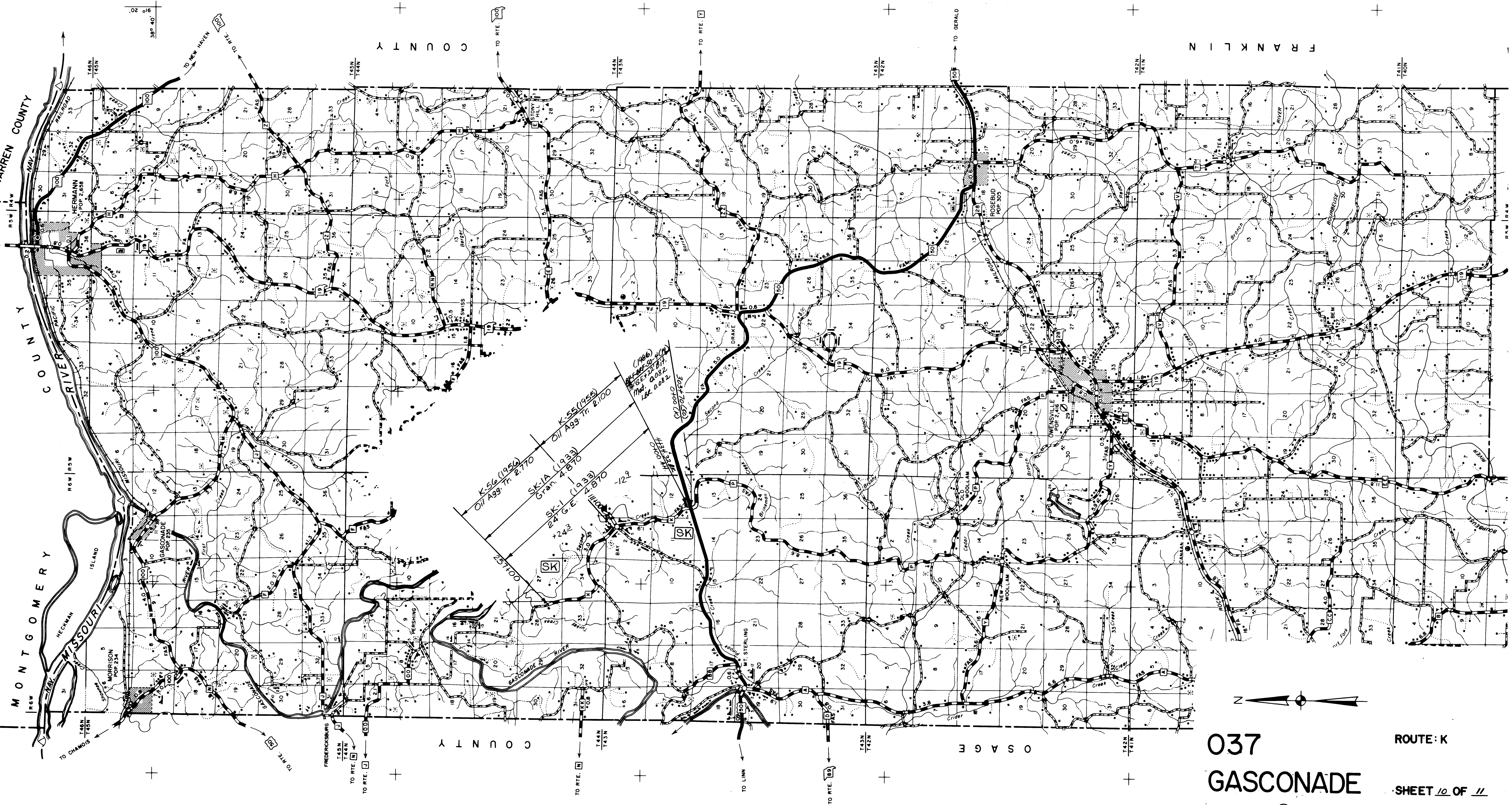
445+47.5(2B)
49B149

408+50

181+69.4

181+69.4

0100.
350+00(A)

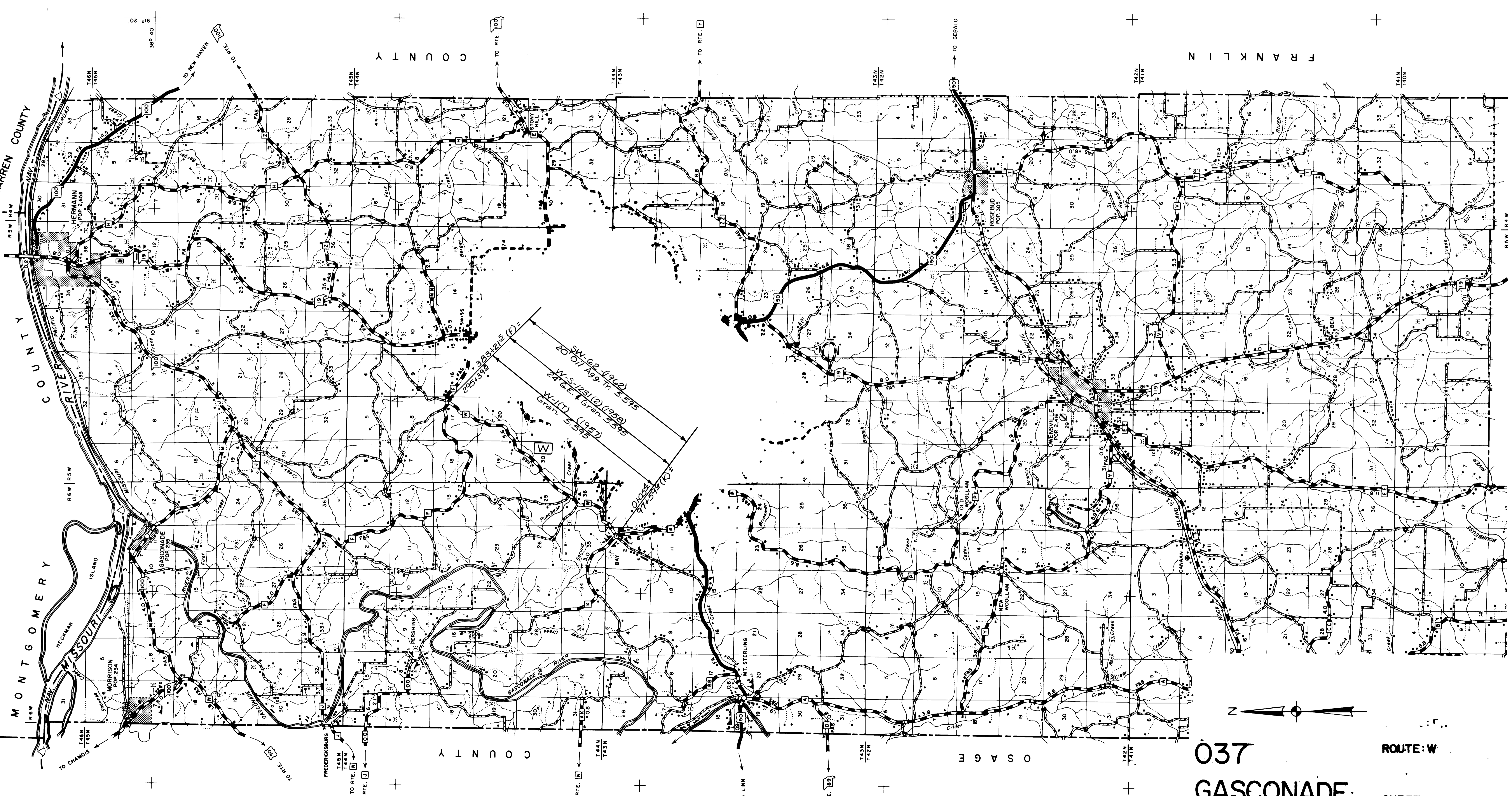


037
GASCONADE

ROUTE: K

SHEET 10 OF 11

⑤



38° 40' 19" 02'

COUNTY

FRANKLIN

141N
140N

MONTGOMERY COUNTY

COUNTY

OSAGE

037
GASCONADE

ROUTE: W

SHEET // OF //

5

SW 6-2 (1902)
20 07 A59 Tr. 5-595
W-1 (1957)
24 G.E. & Gran. 5-595
383/25 (P)
295/398

01004
977-592 (V)

MT. STERLING

NEW WOOLLAM

OWENSVILLE
POP. 246

ROSEBUD
POP. 305

HERMANN
POP. 2,658

GASCONADE
POP. 235

MORRISON
POP. 234

FREDERICKSBURG

TO RTE. N

TO LINN

TO RTE. 89

TO GERALD

TO RTE. 100

TO RTE. J

TO RTE. 100

TO RTE. 100

TO RTE. 100

TO RTE. 100

TO RTE. 100

TO RTE. 100

TO RTE. 100

TO RTE. 100

146N
145N

145N
144N

144N
143N

143N
142N

142N
141N

141N
140N

TO NEW HAVEN

TO RTE. 100

TO CHAMMOIS

TO RTE. 100

TO RTE. 100

TO RTE. 100

TO RTE. 100

TO RTE. 100

TO RTE. 100

TO RTE. 100

TO RTE. 100

TO RTE. 100

TO RTE. 100

TO RTE. 100

TO RTE. 100