

ROUTES - 13  
69 SPUR  
146  
J

041 SHEET 1 OF 11  
HARRISON

(Part in Divisions of)  
COALITION  
RES. SURF. LEV. A.C. RES.  
NO. 1006

SEE SHEET 1 OF 11  
FOR RTE. K PART

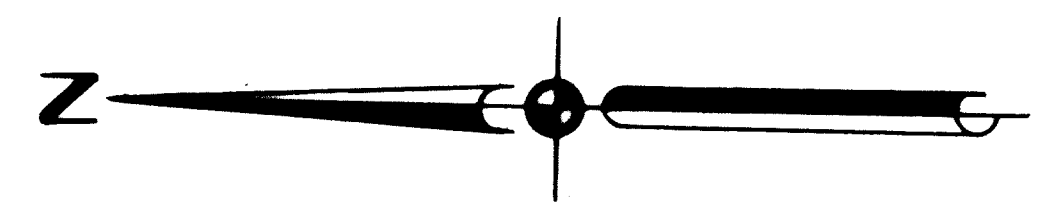
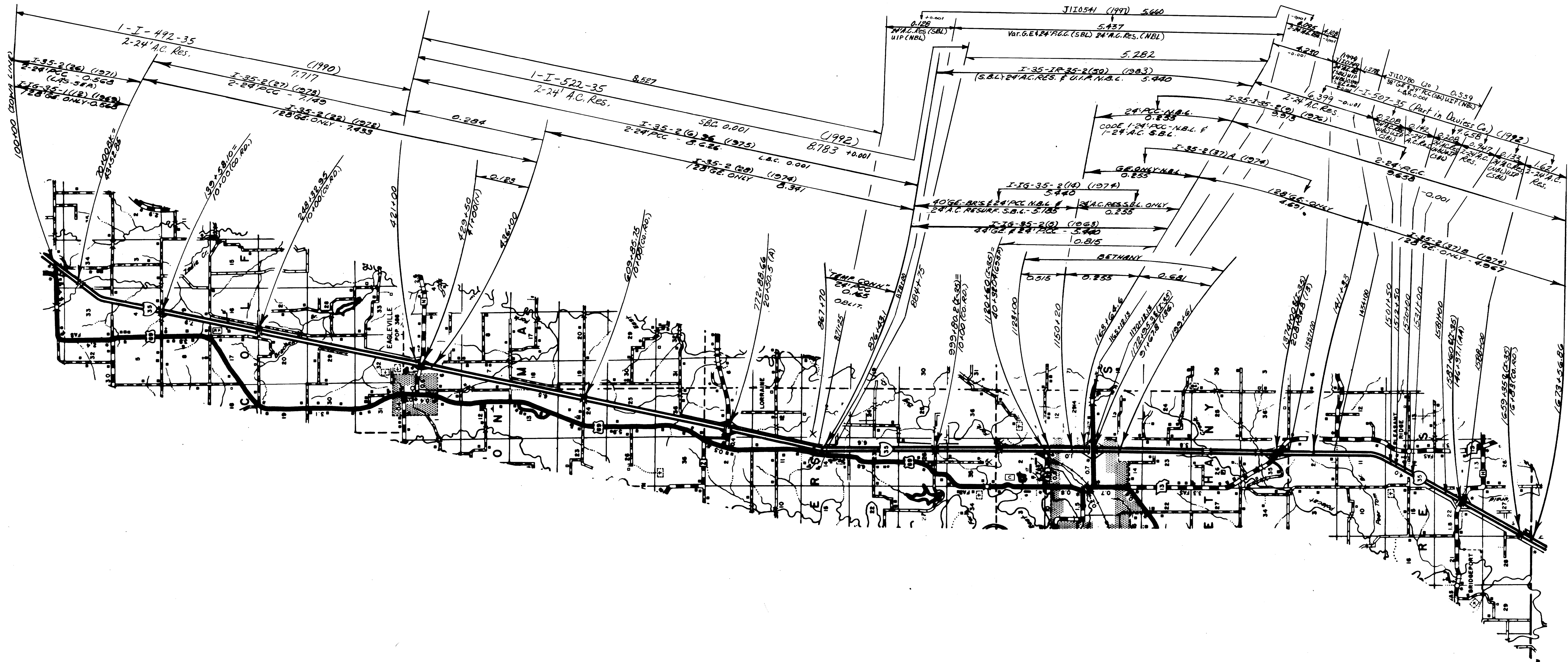
NO. 574  
0.500  
NEW PLAT RA. DIV.  
MELBOURNE  
NOT INCORP.

MARKED RTEN - COMM. 9-73  
VV-69 (1969)  
20' OIL RES. TREAT. - 1.003  
VV-S-61A (10) B (1964)  
24' GE. F. GRAN. - 1.003

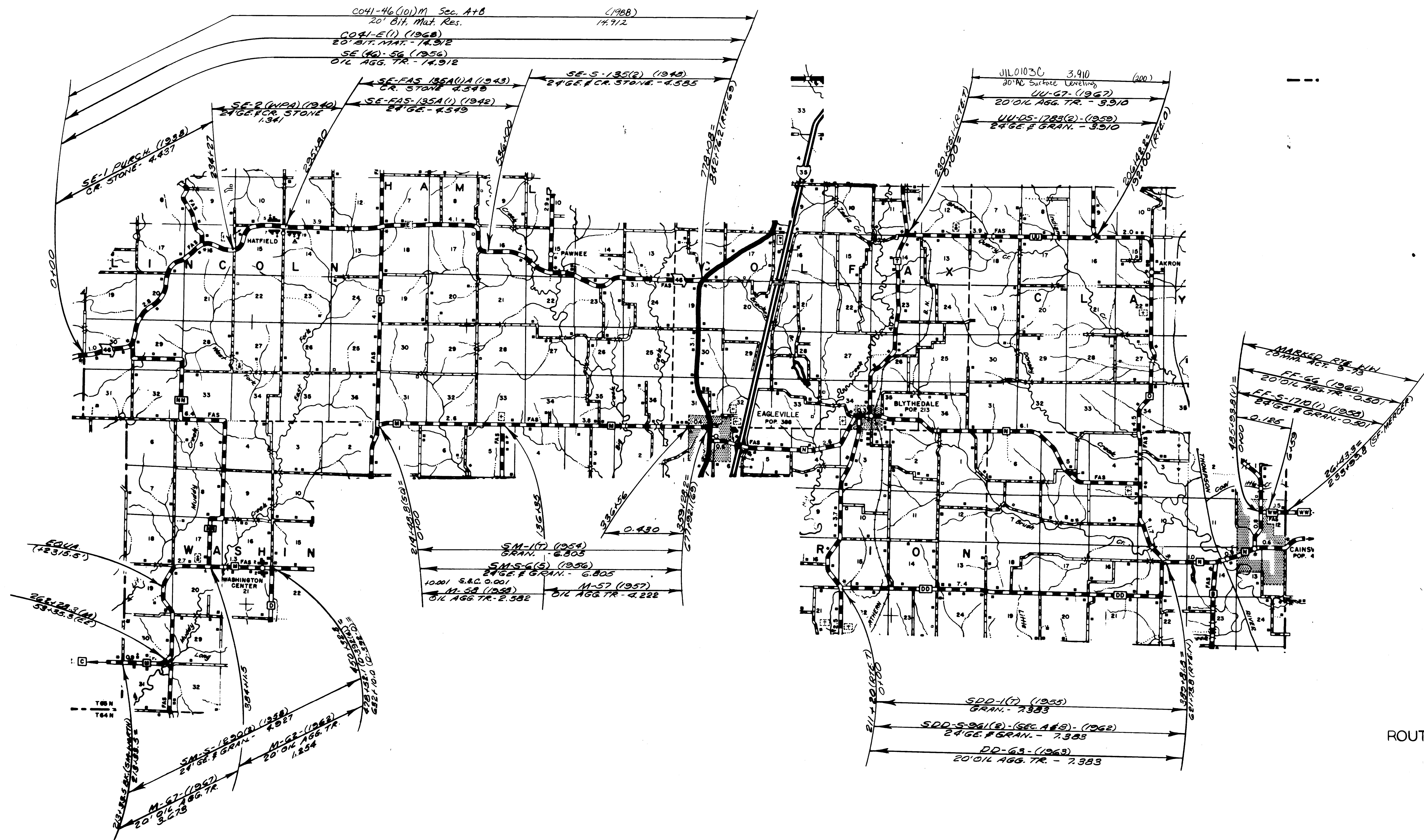
RS-59(B) (1987) 24' AC RES. 0.650  
S.B.C. 0.001  
F-69-2(1) (1963)  
38' GE. F. 24' BIT. MAT. - 0.761  
Ate. 69 Spur

COAL-13(10)M (1990) 1995  
24' SURF. LEV. A.C. RES.  
COAL-13 (5)  
20' Bit. Mat. Res.  
13-COAL-13(10)M (1990)  
24' SURF. LEV. A.C. RES.  
F-35-2(37)A (1974)  
40' SURF. LEV. A.C. RES.  
COAL-13(3)M (1972)  
20' Bit. Mat. Res.  
COAL-13(2)M (1972)  
20' Bit. Mat. Res.  
19-69 (1969)  
20' OIL RES. TREAT. - 0.701  
FAP-91A (1988)  
30' GE. F. CR. STONE  
TRANS. TO US. 136  
36-244  
0.708

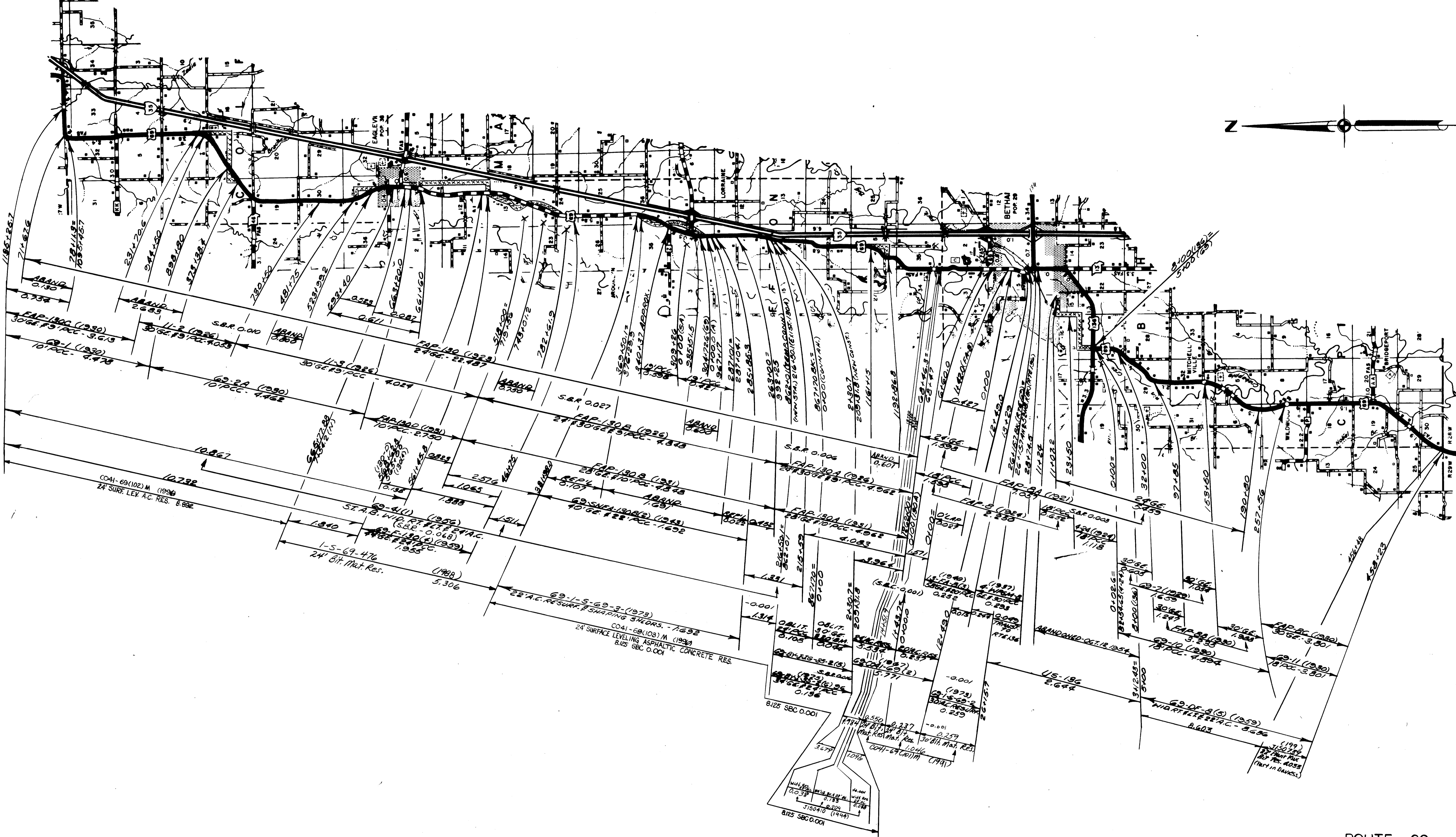
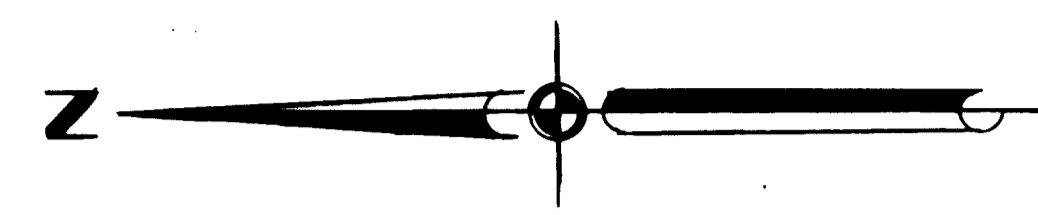
COAL-14(13)M SEC. 414 (1974)  
20' Bit. Mat. Res.  
COAL-14(13)M SEC. 414 (1974)  
20' Bit. Mat. Res.  
COAL-14(13)M SEC. 414 (1974)  
20' Bit. Mat. Res.  
COAL-14(13)M SEC. 414 (1974)  
20' Bit. Mat. Res.  
COAL-14(13)M SEC. 414 (1974)  
20' Bit. Mat. Res.



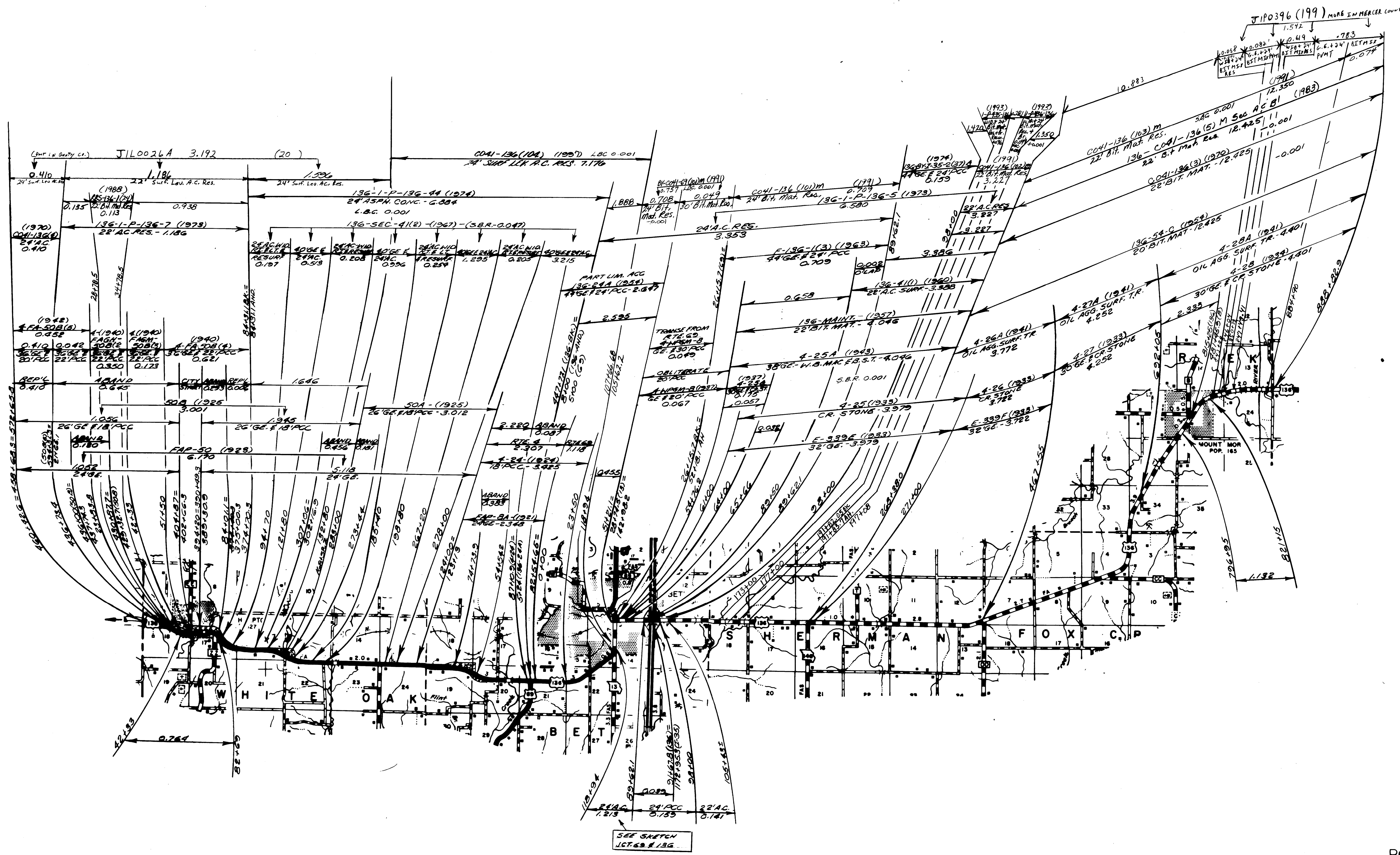
ROUTE - I-35



ROUTES -46 (E)  
 M  
 DD  
 UU  
 WW

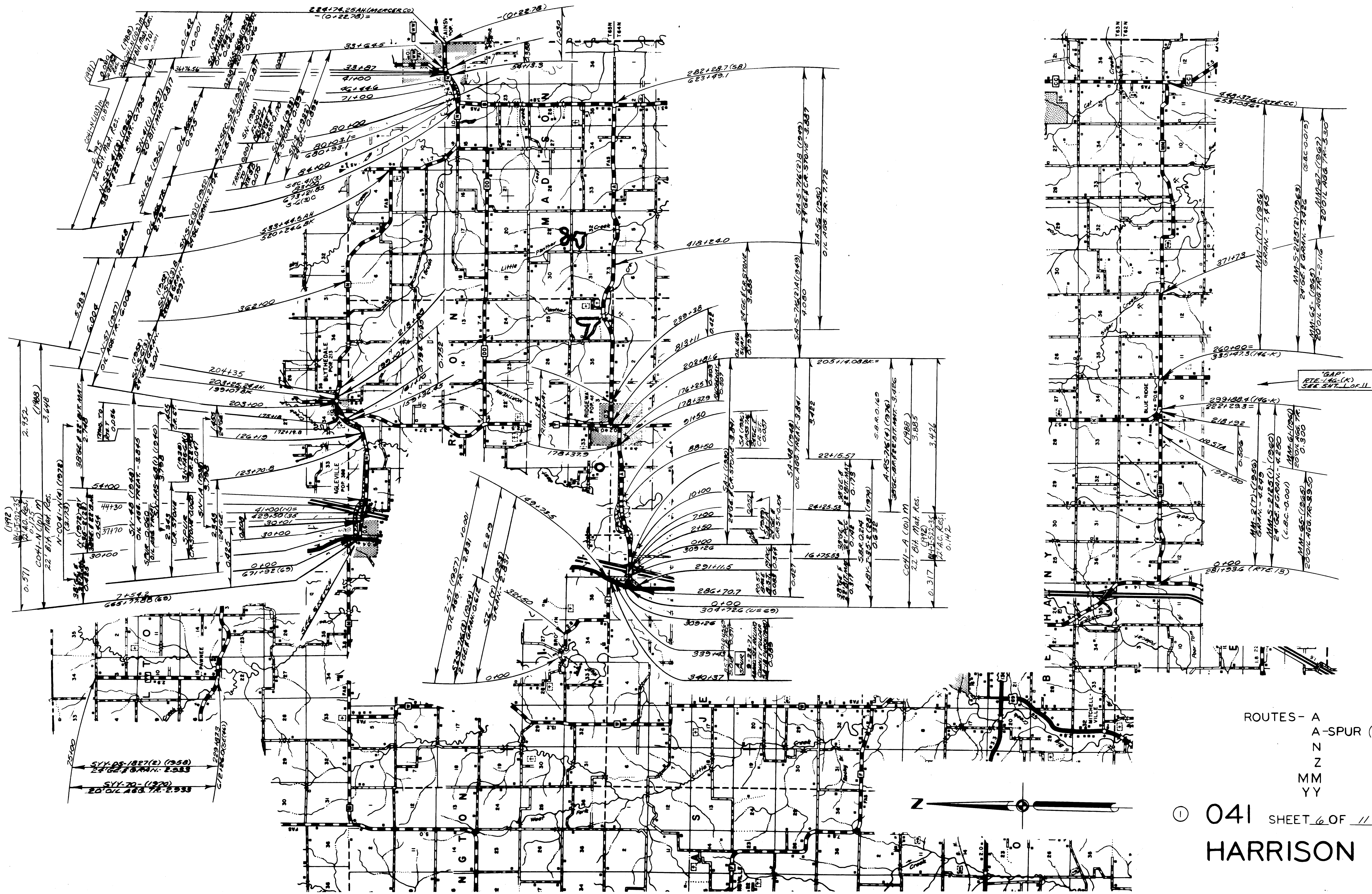


ROUTE - 69



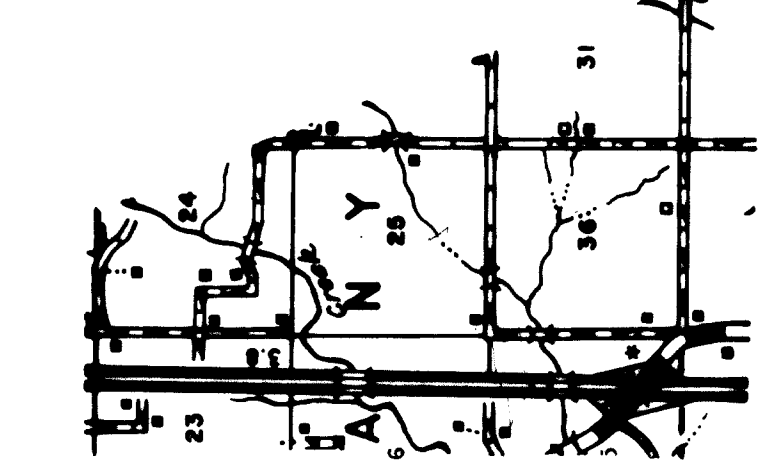
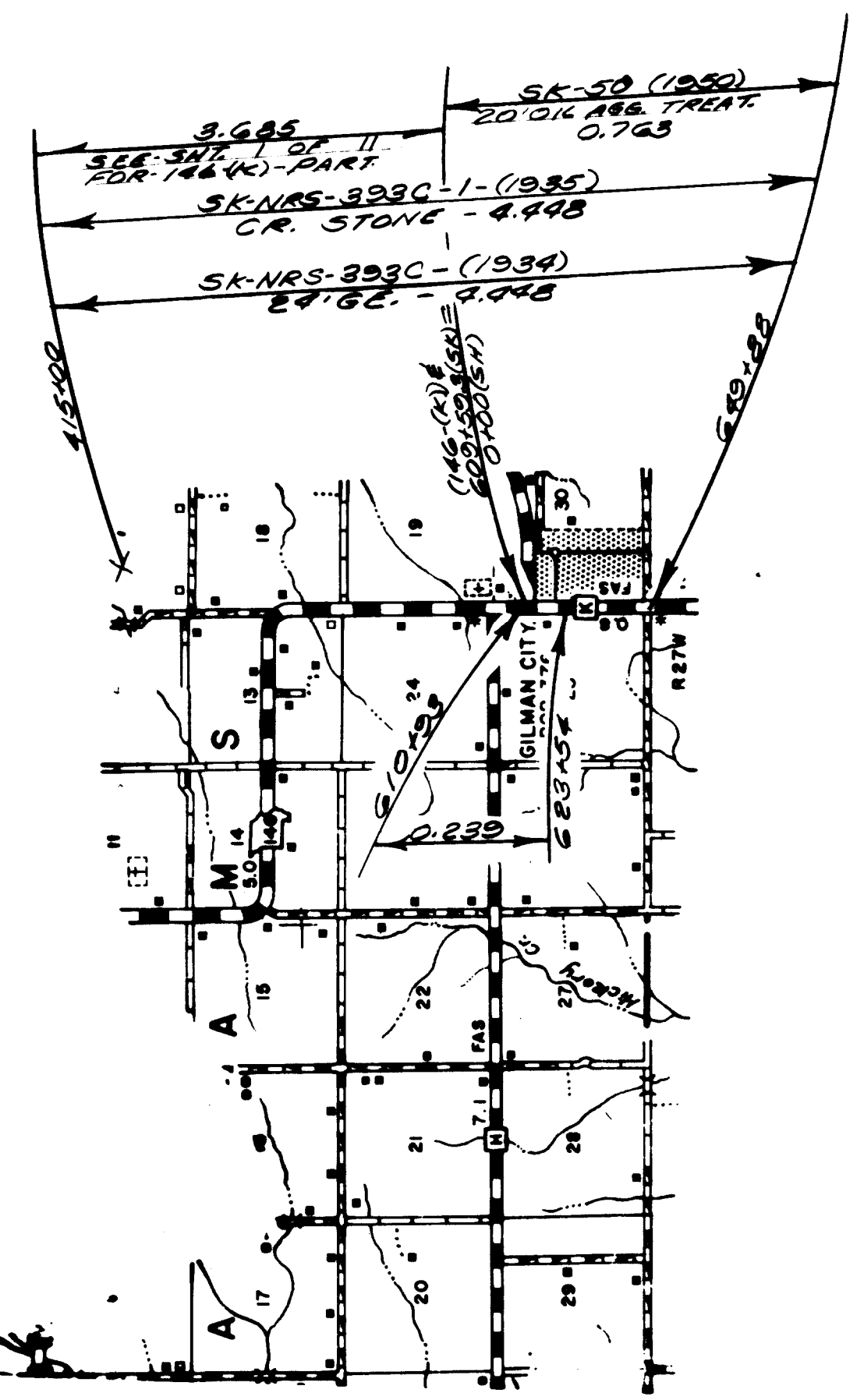
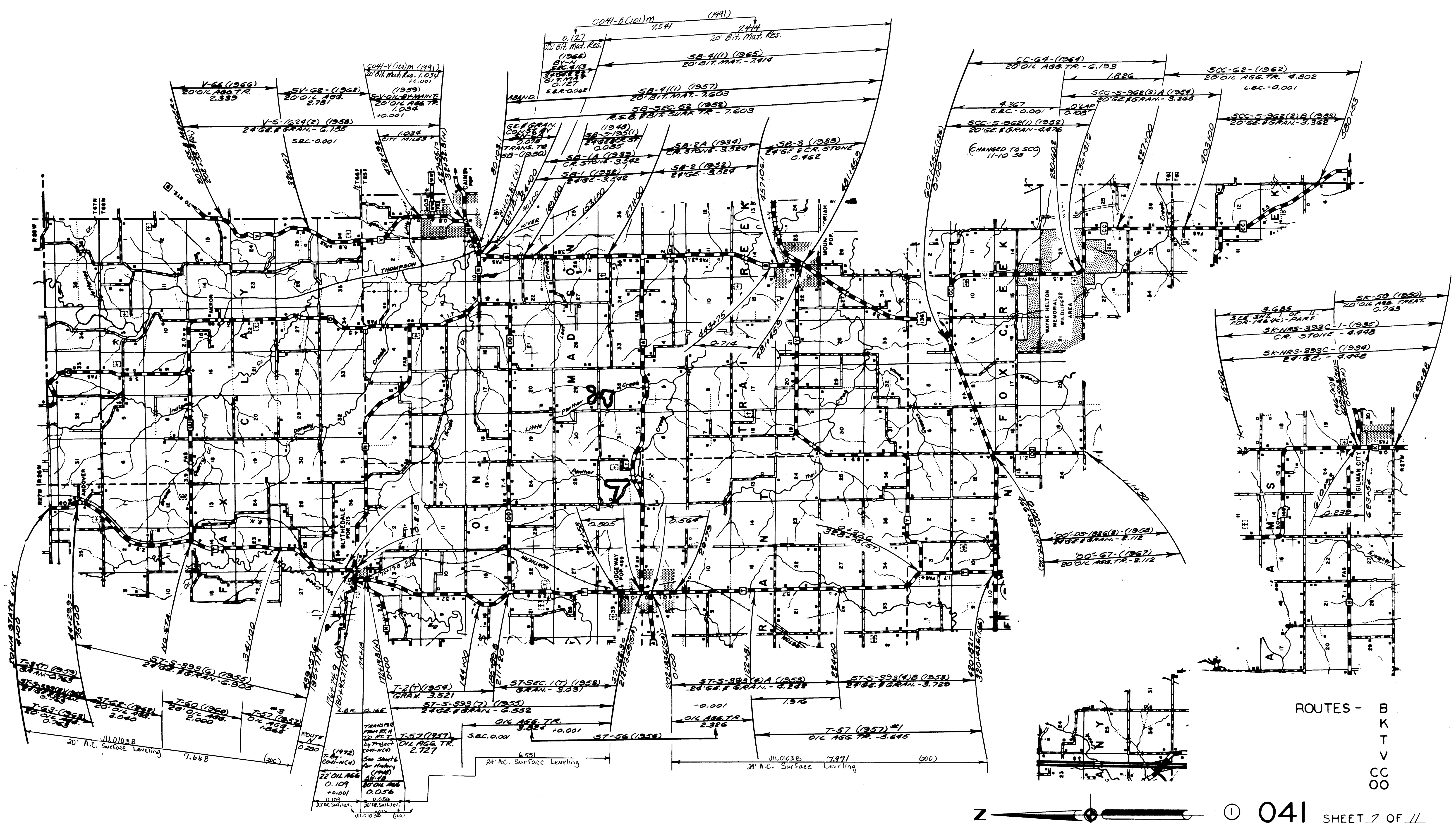
ROUTE - 136

① 041 SHEET 5 OF 11  
HARRISON

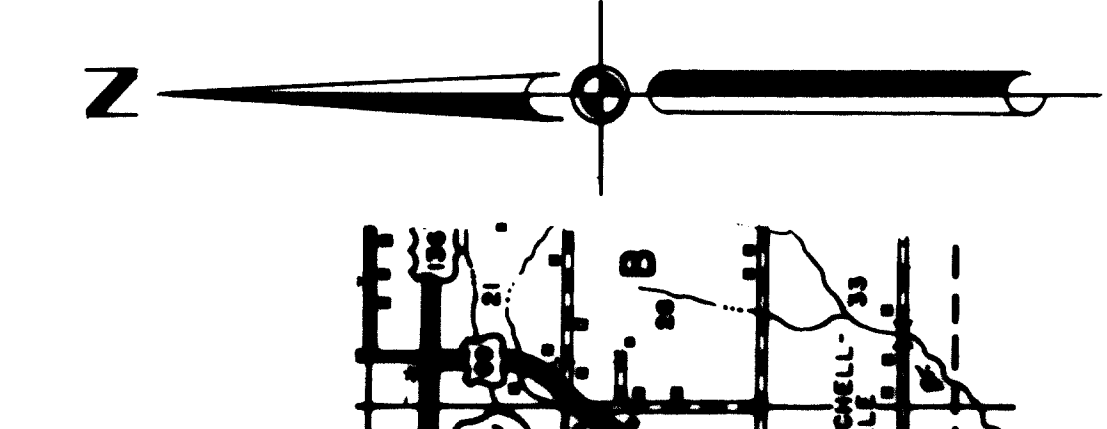


ROUTES- A  
 A-SPUR (ABAND.)  
 N  
 Z  
 MM  
 YY

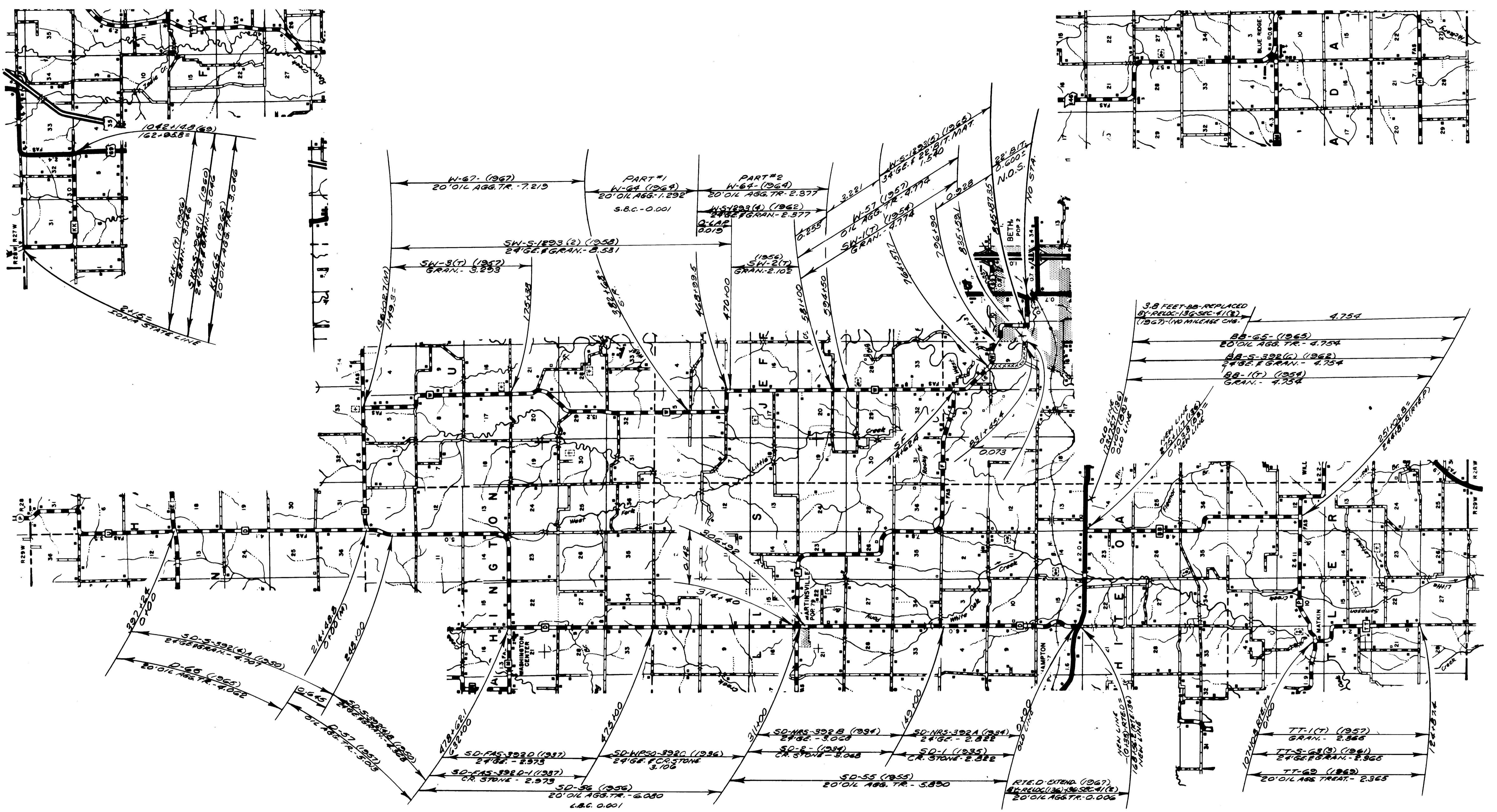
041 SHEET 6 OF 11  
**HARRISON**



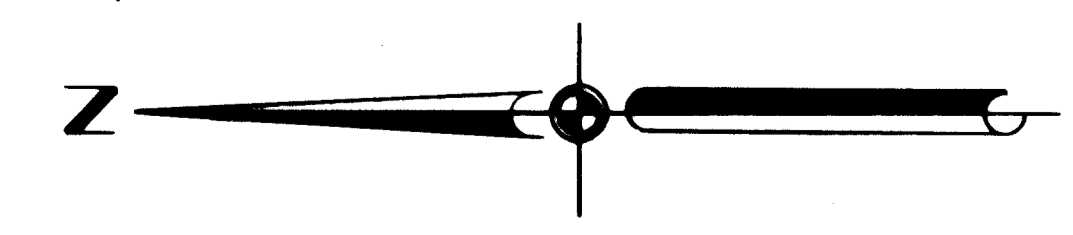
ROUTES - B  
 K  
 T  
 V  
 CC  
 OO



041 SHEET 7 OF 11  
 HARRISON

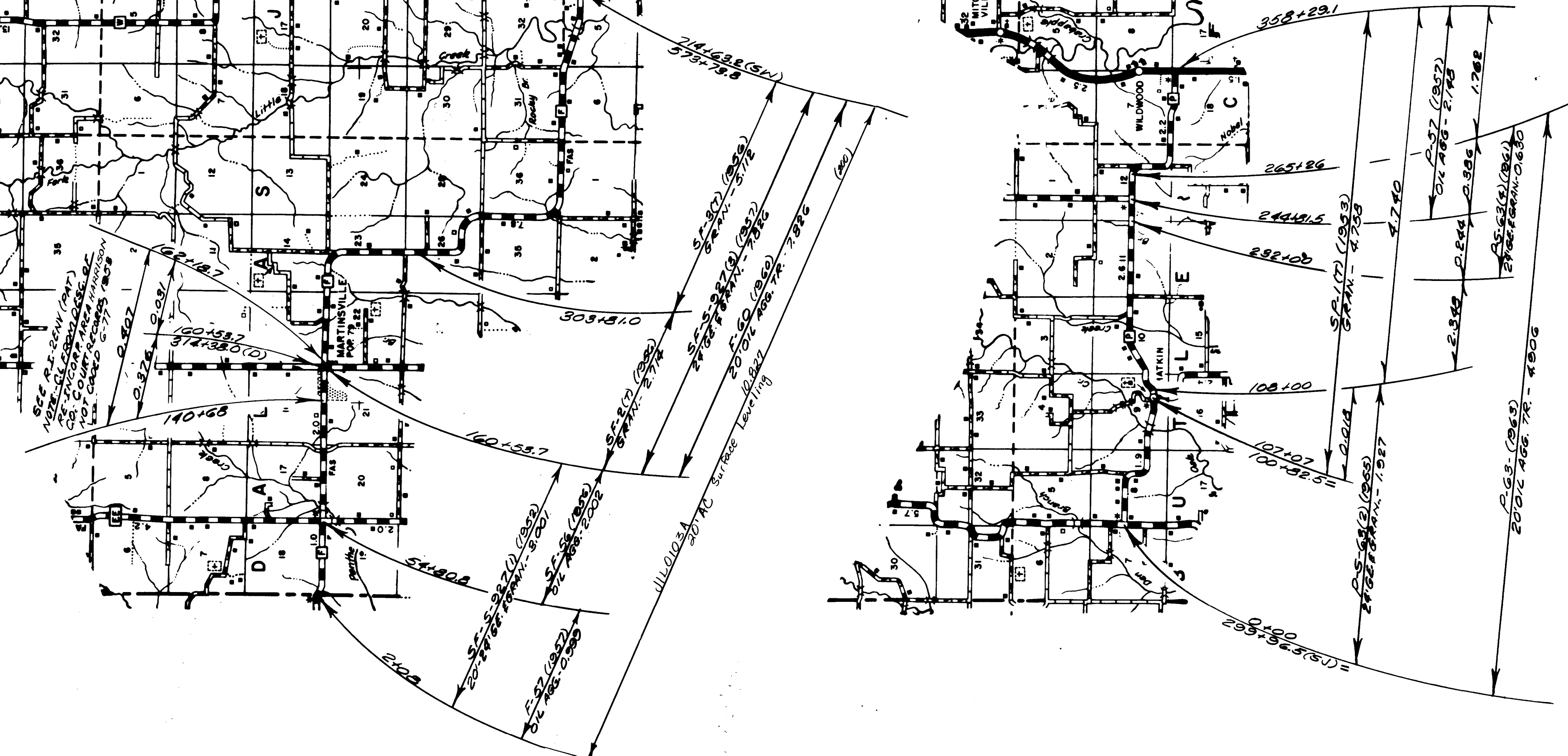
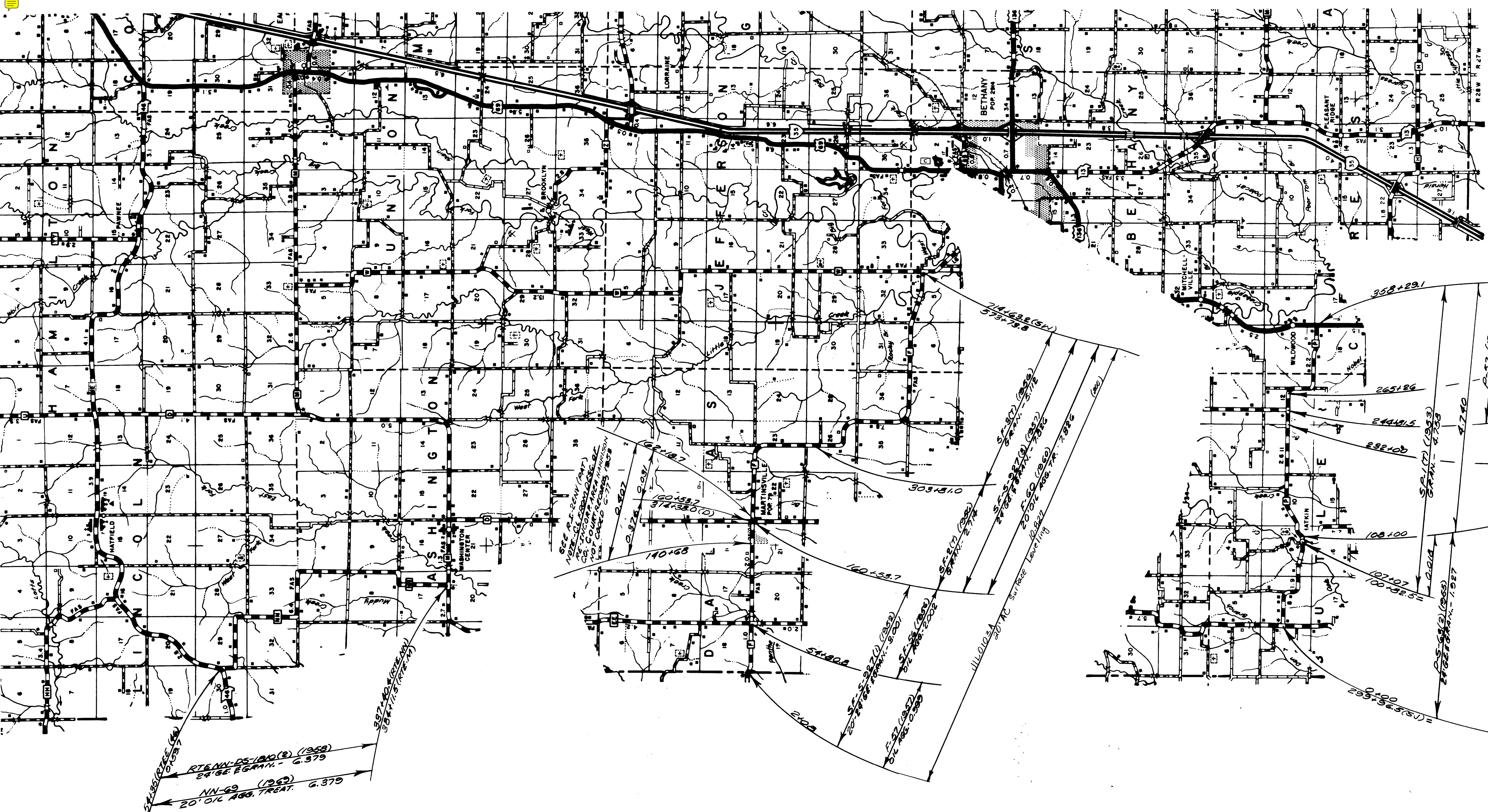


ROUTES - D  
 W  
 BB  
 KK  
 TT

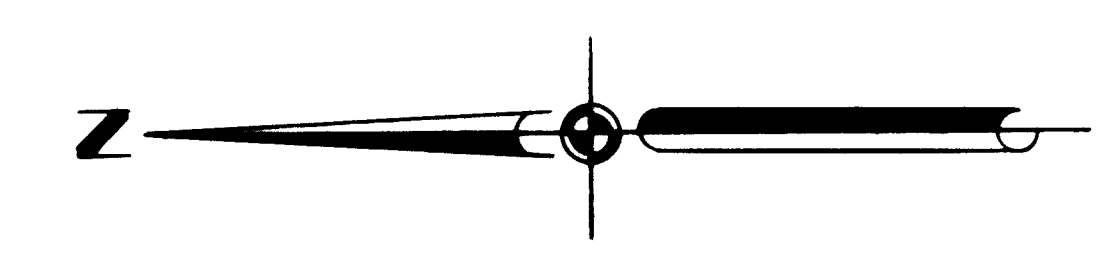


041 SHEET 8 OF 11  
 HARRISON

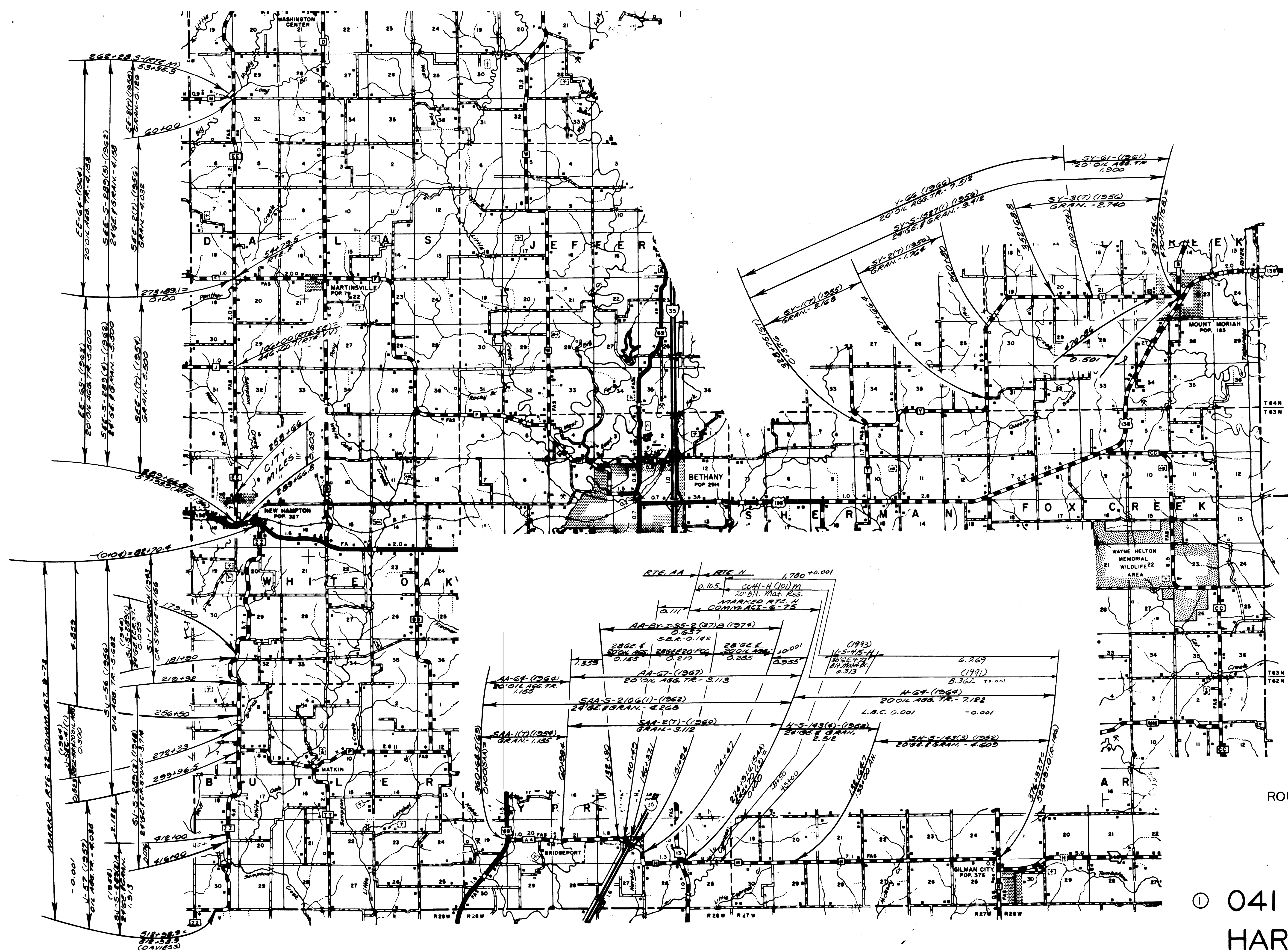




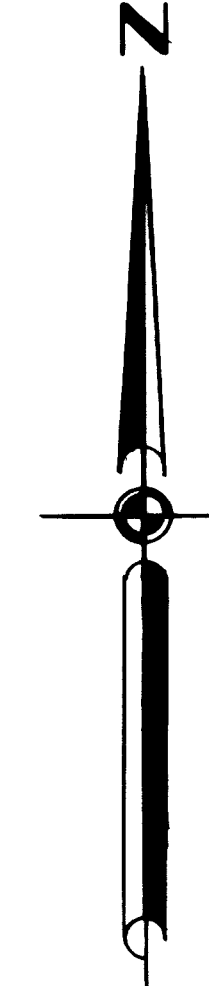
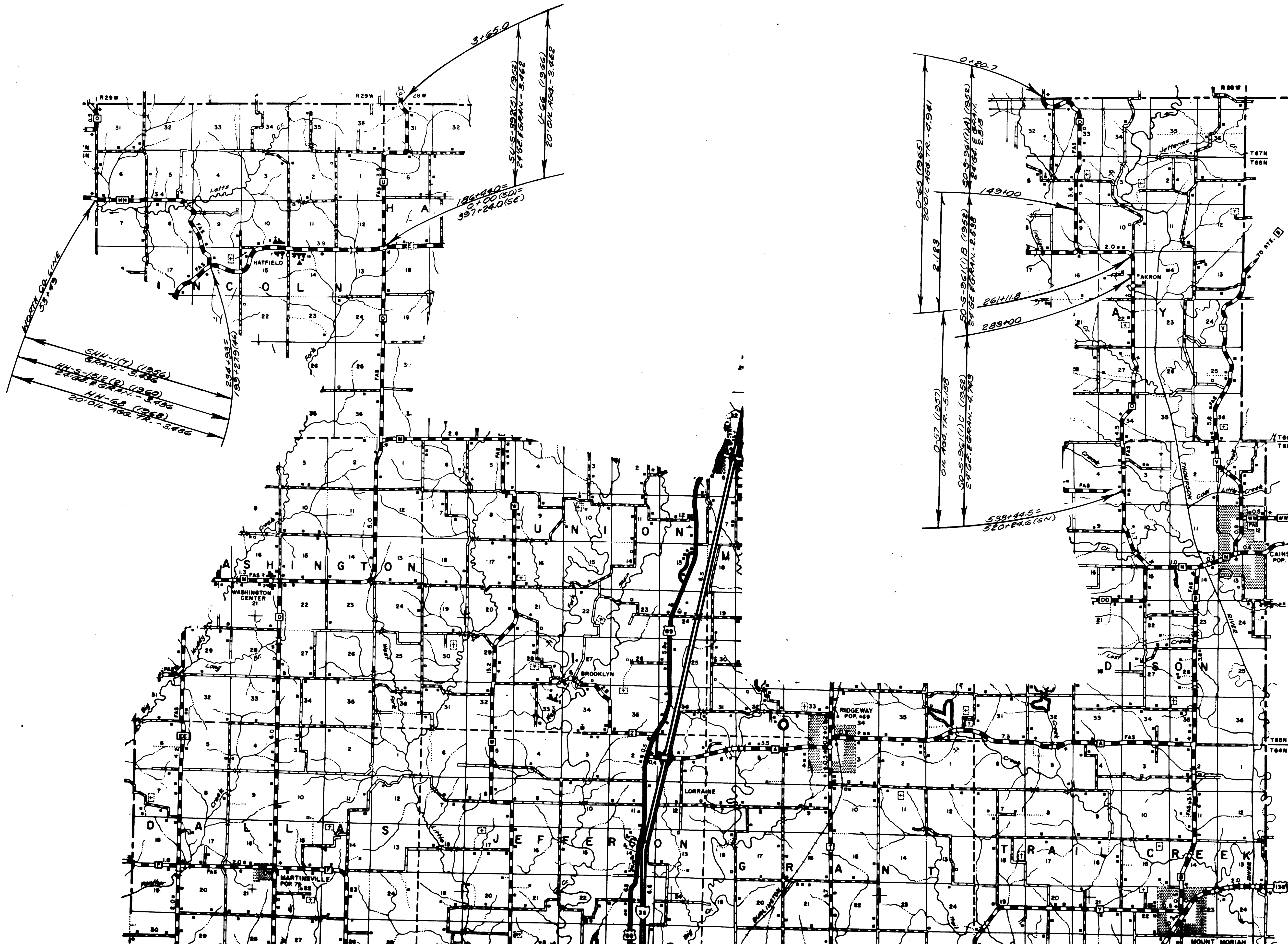
ROUTES - F  
P  
NN



① 041 SHEET 9 OF 11  
HARRISON



ROUTES - H  
 Y  
 AA  
 EE  
 ZZ



ROUTES - O  
U  
HH

① 041 SHEET // OF //  
HARRISON