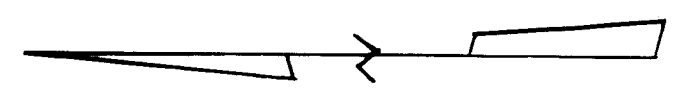


SEE SHEET 10 OF 10 FOR
RTE. 59 & 59 INTERCHANGE
DETAILS & HOLT CO. FLDR.

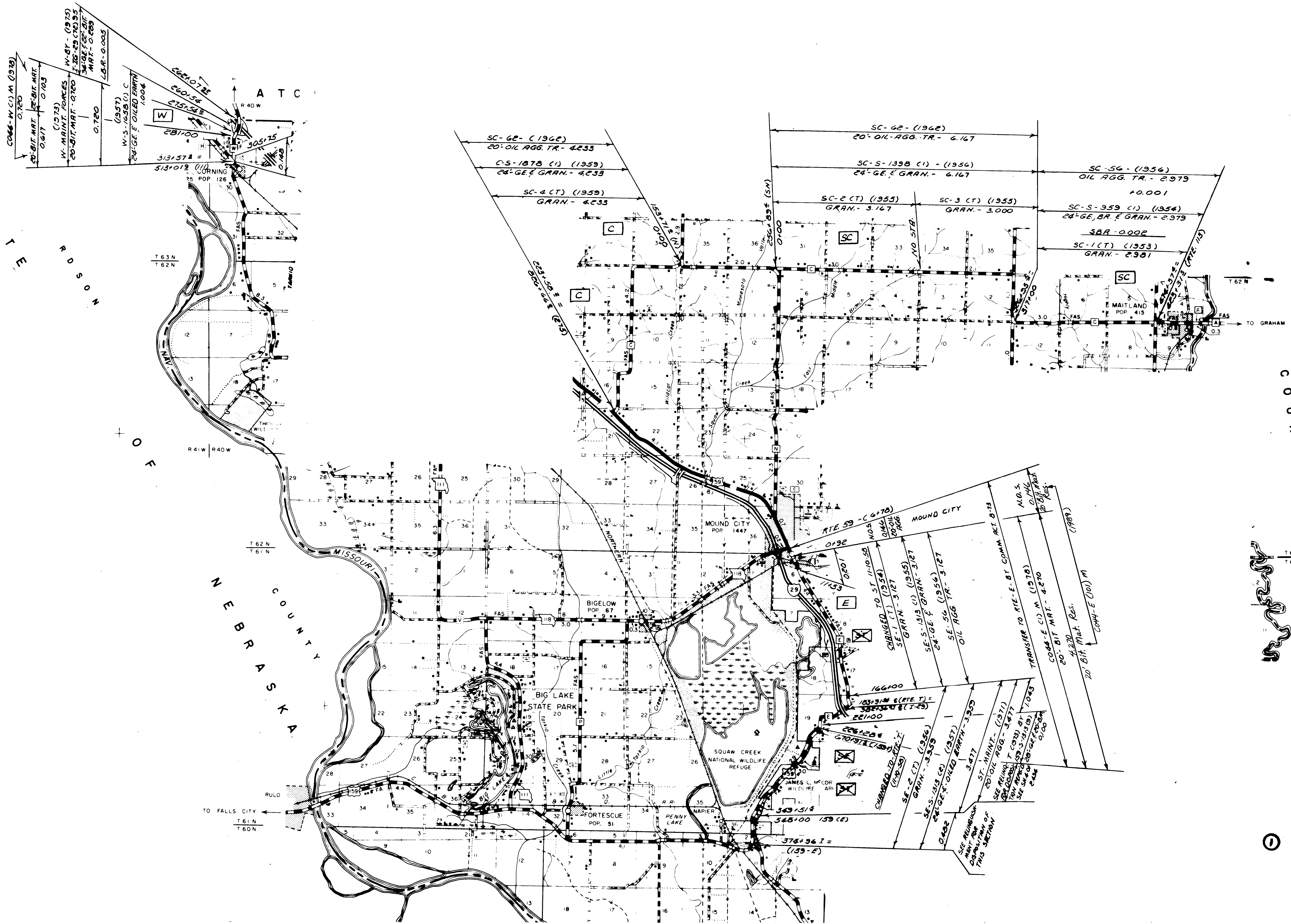
SEE ANDREW CO. FOR
BALANCE OF PROJECT.

SEE SHEET 10 OF 10 FOR
RTE. 59 & 59 INTERCHANGE
DETAILS & HOLT CO. FLDR.

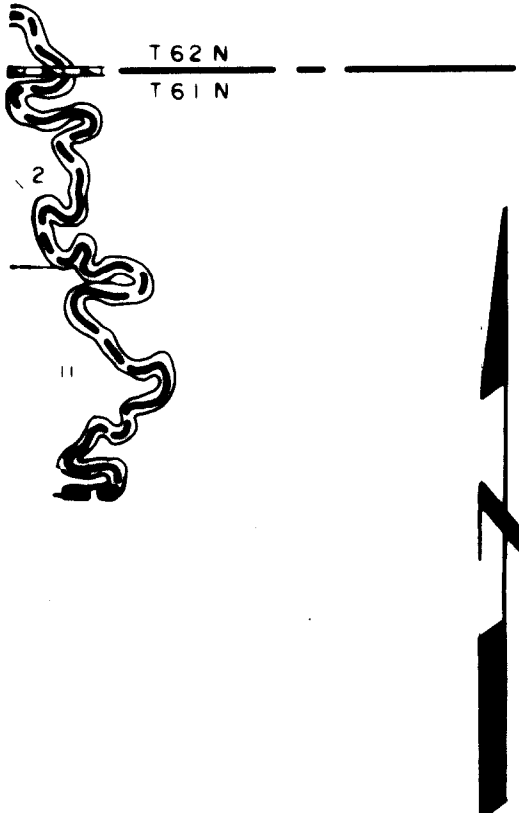


ROUTE 59-PART -

044 SHEET 7 OF 10
HOLT

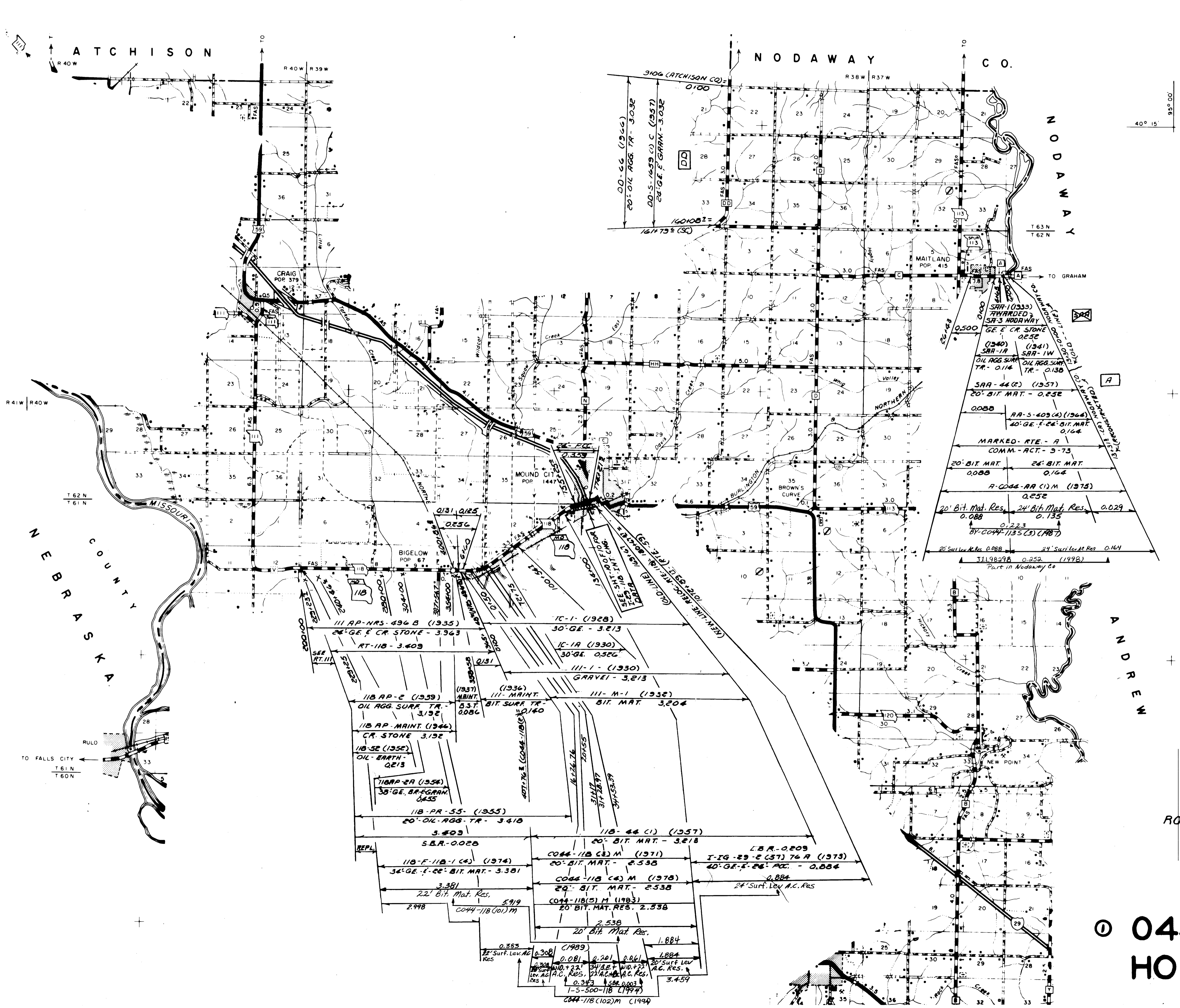
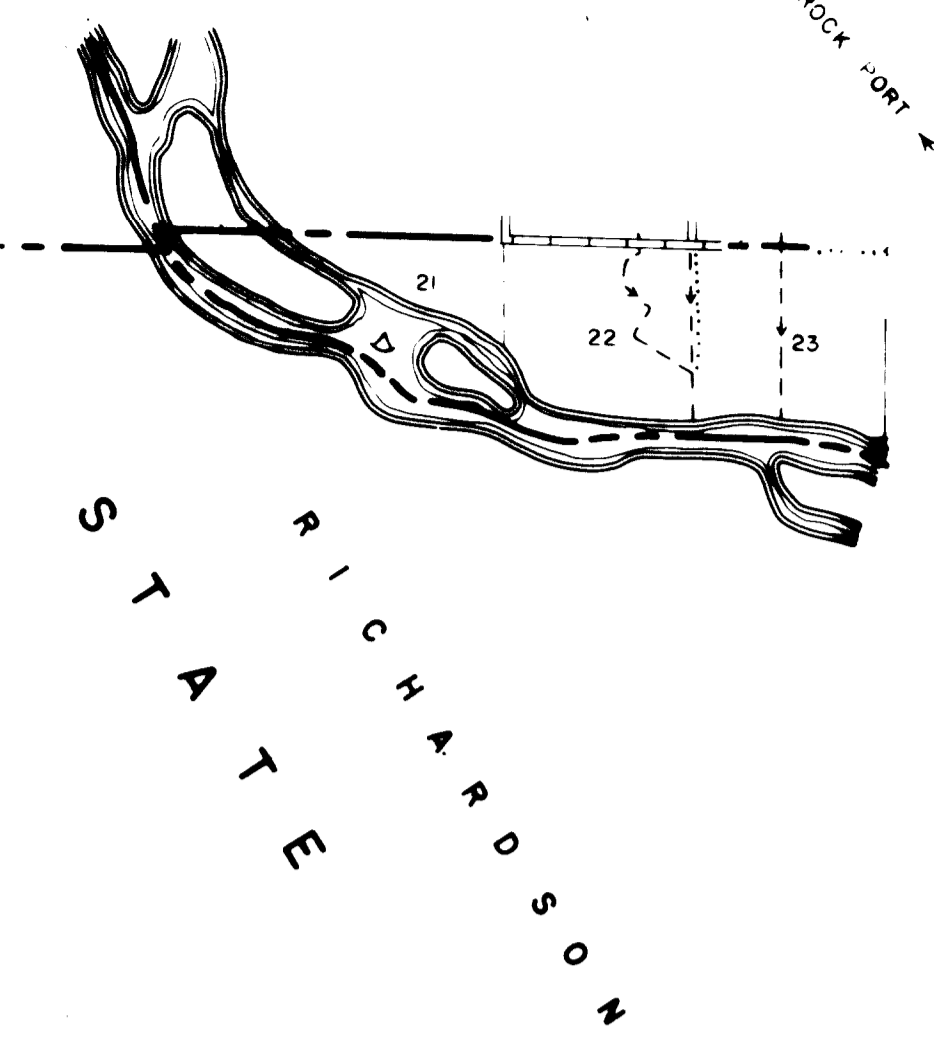


C O U N T Y



ROUTES: E
W
C

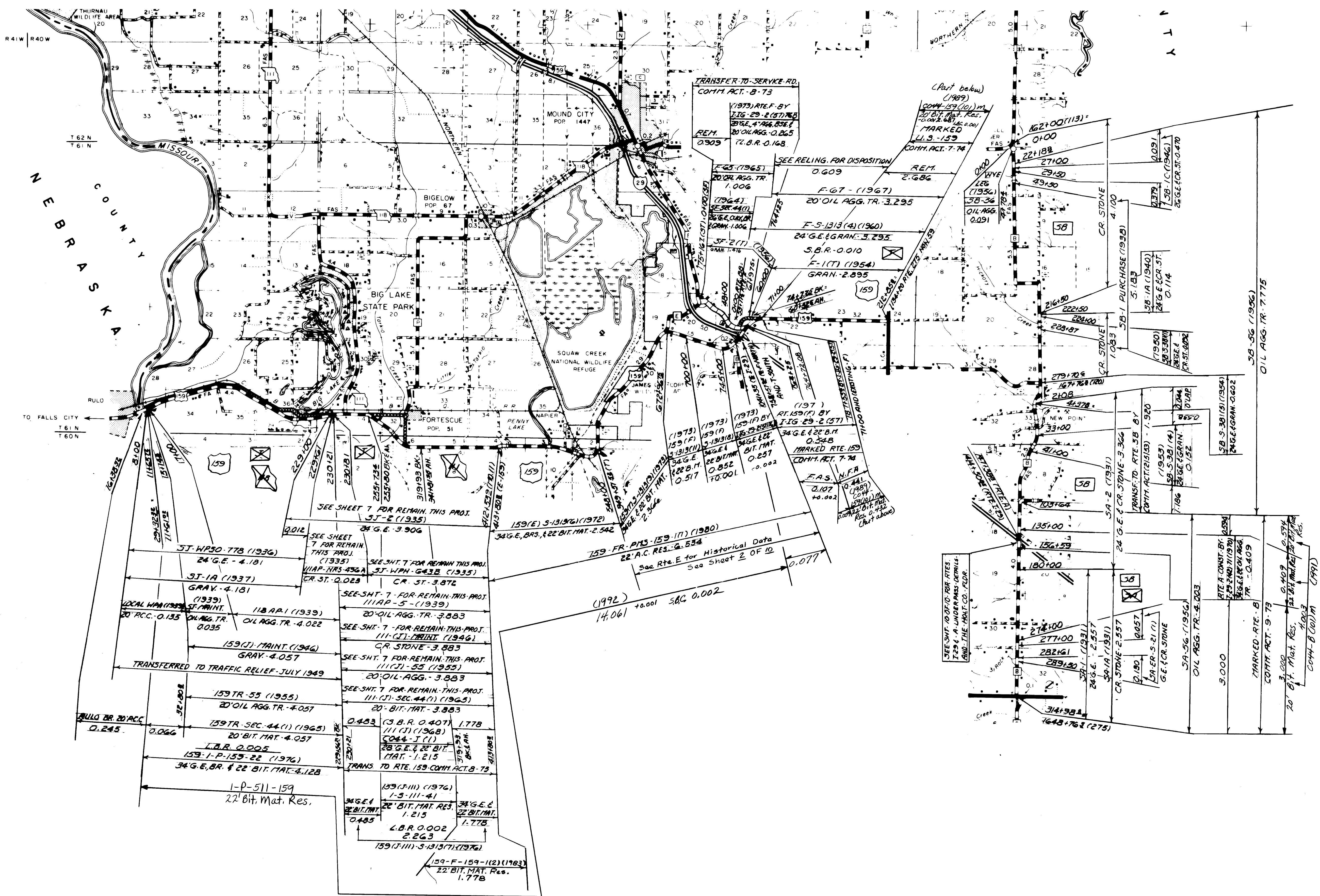
044 SHEET 2 OF 10
HOLT



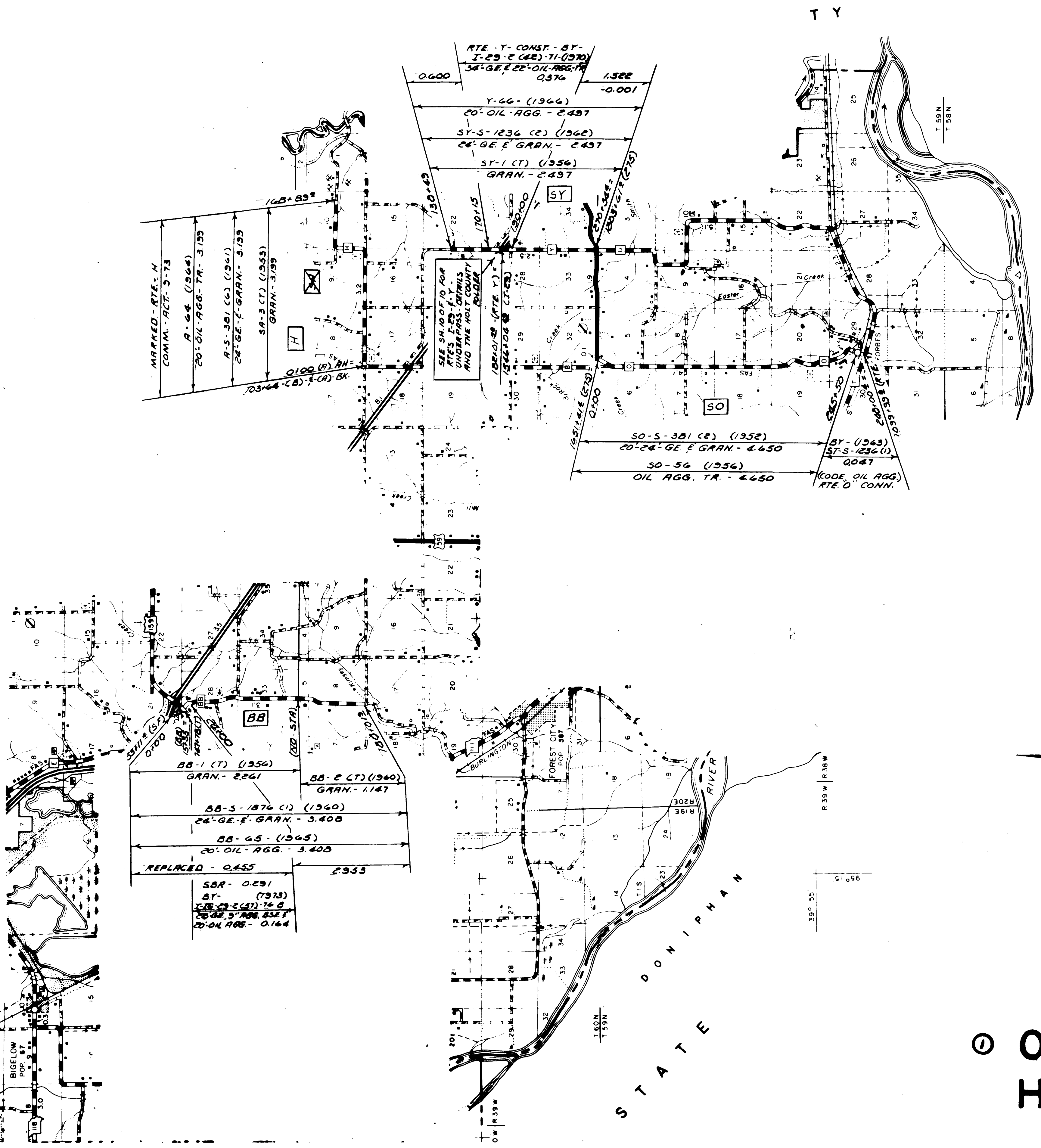
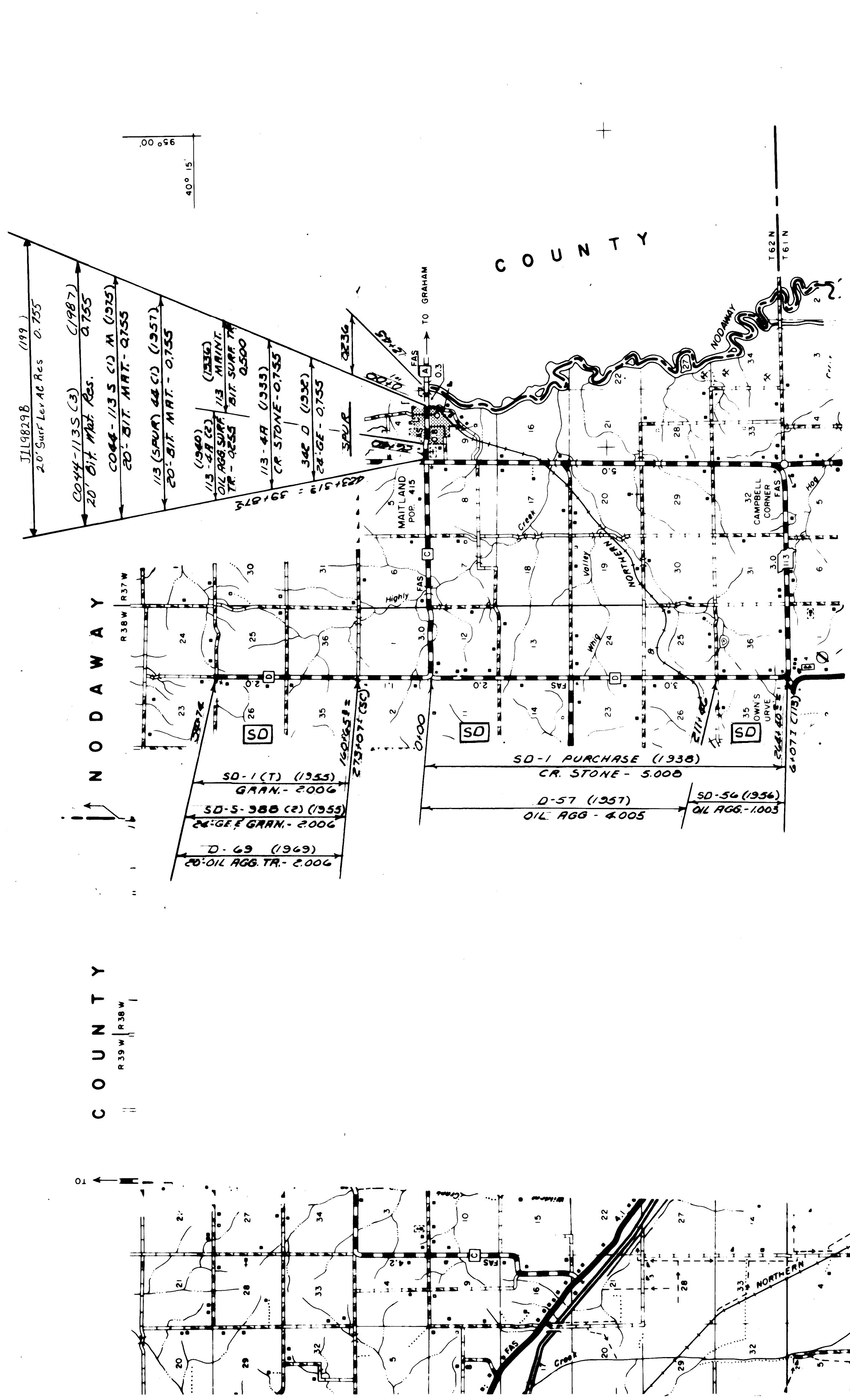
SRA-1 (1933)
 AWARDED
 SA-3 NODAWAY
 GE. & CR. STONE
 0252
 (1940)
 SRA-1A (1941)
 SRA-1W
 OIL AGG. SURF. TR. - 0.114
 OIL AGG. SURF. TR. - 0.136
 SRA-44 (1957)
 20' BIT. MAT. - 0.252
 0088
 RA-5-409 (1964)
 40' GE. & CR. BIT. MAT. - 0.164
 MARKED RTE - A
 COMM. ACT. - 9-75
 20' BIT. MAT. 24' BIT. MAT.
 0.088 0.164
 A-004-RA (12)M (1975)
 0.252
 20' Bit. Mat. Res. 24' Bit. Mat. Res.
 0.088 0.135
 0.223
 BY CO. 1135 (S) (1987)
 20' Surf. Lev. Ac. Res. 0.088 24' Surf. Lev. Ac. Res. 0.164
 J1198298 0.252 (1998)
 Part in Nodaway Co.

ROUTE: 118-A-DD

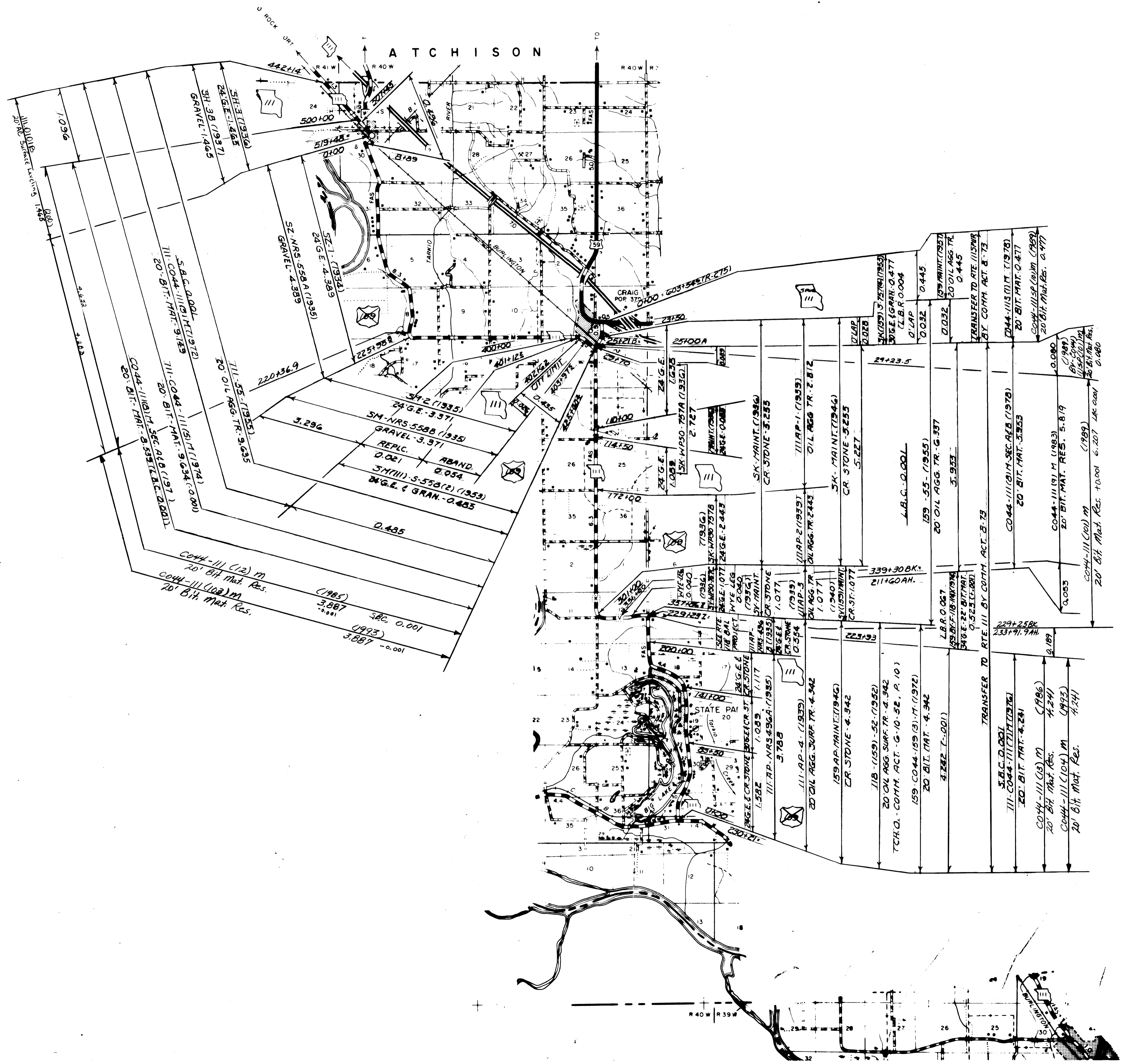
044 SHEET 3 OF 10
 HOLT



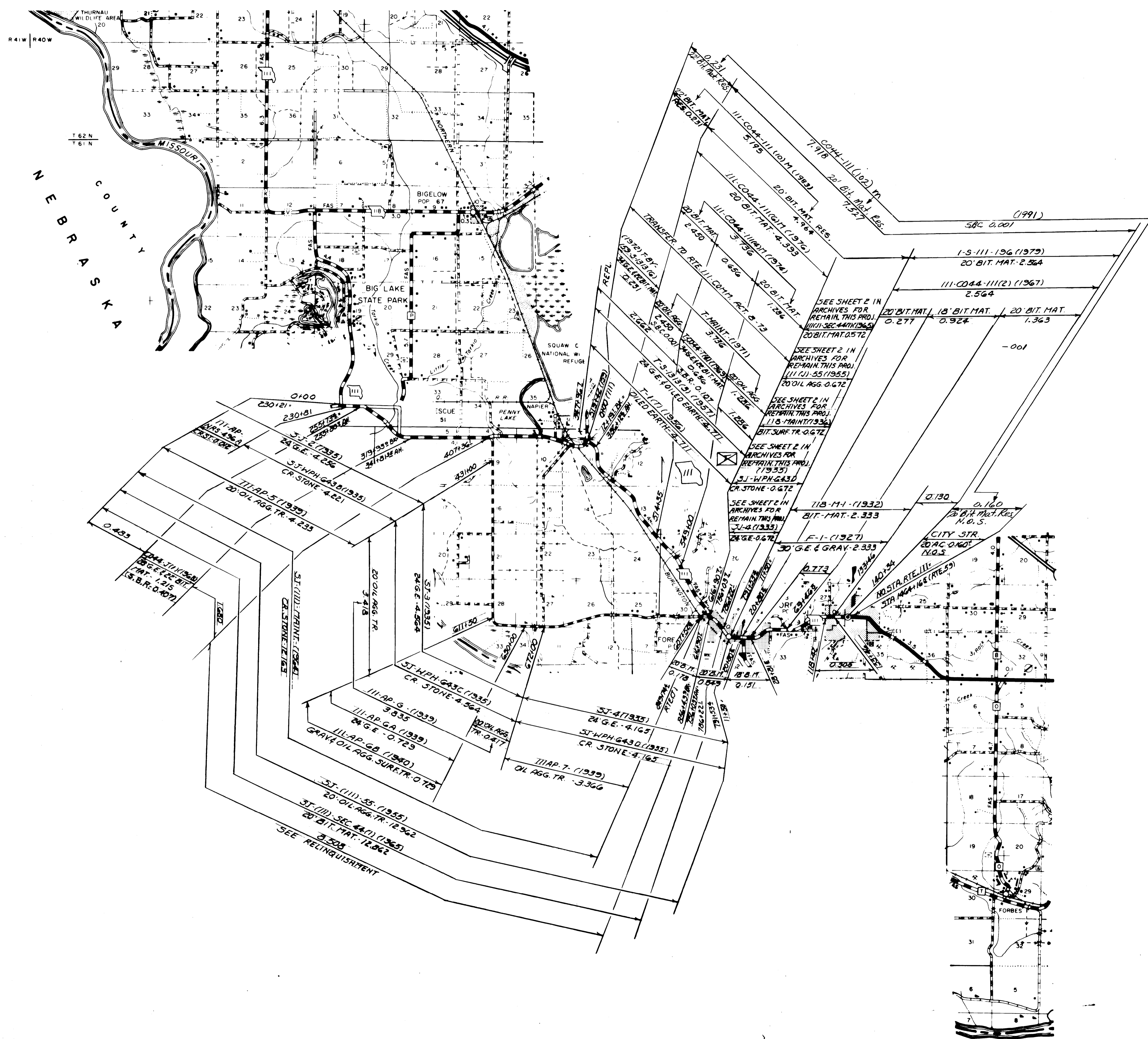
ROUTES:
159 ✓
168 ✓



- ROUTES :
- O
 - Y
 - BB
 - D
 - H
 - SPUR 113

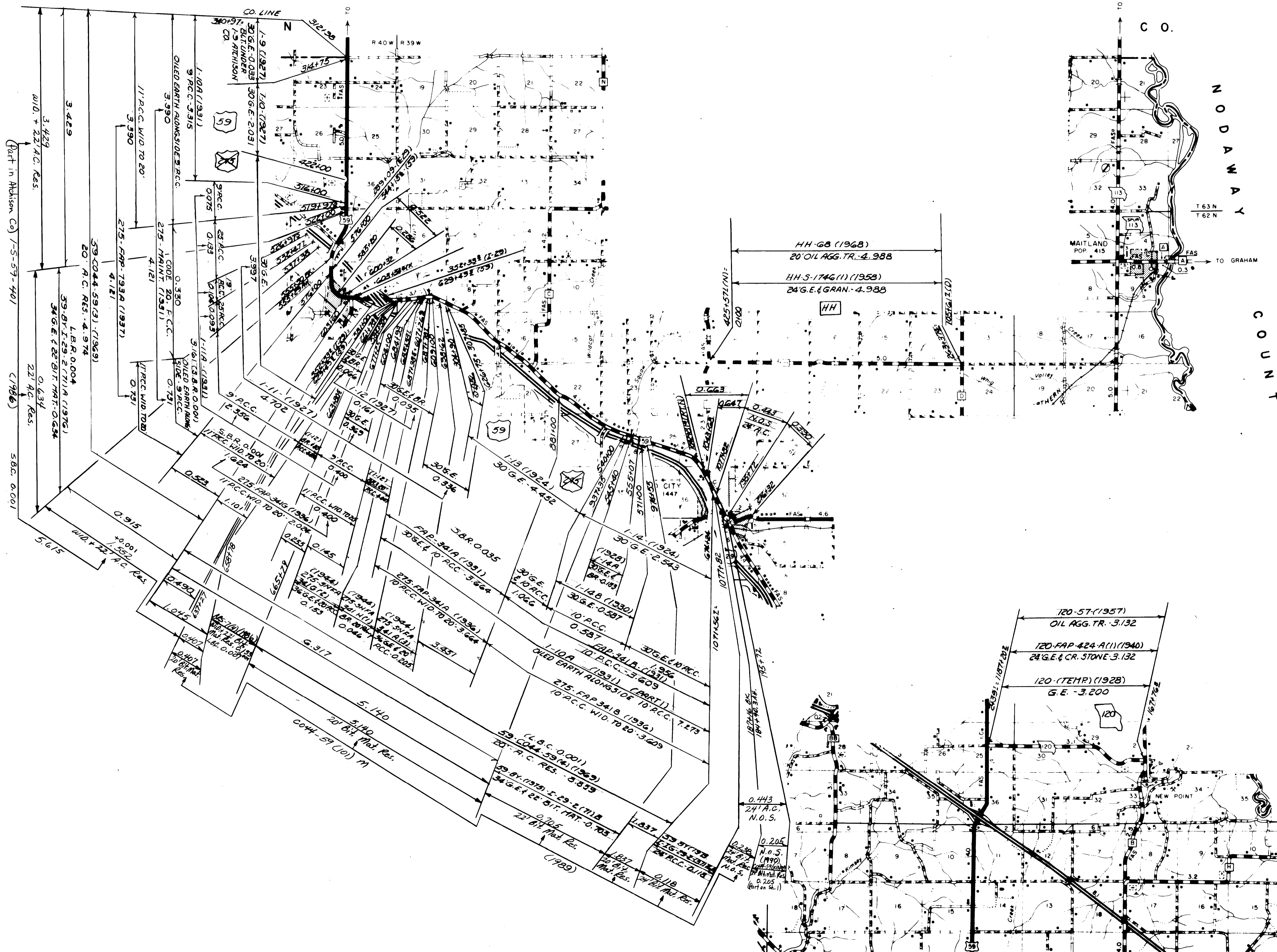


ROUTE:
 III (PART)
 III (SPUR)



NEBRASKA COUNTY

ROUTES:
III (PART)

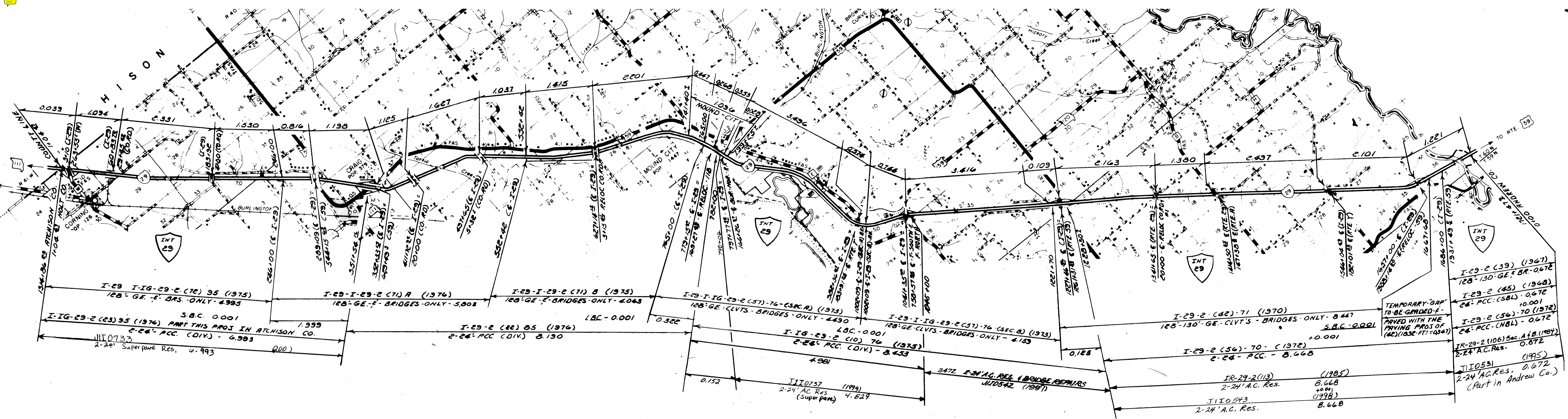


40° 15'

NODAWAY COUNTY

ROUTES:
59 (PART)
120
HH

044
HOLT
SHEET 9 OF 10



ROUTE - I-29

①
044 SHEET 10 OF 10
HOLT