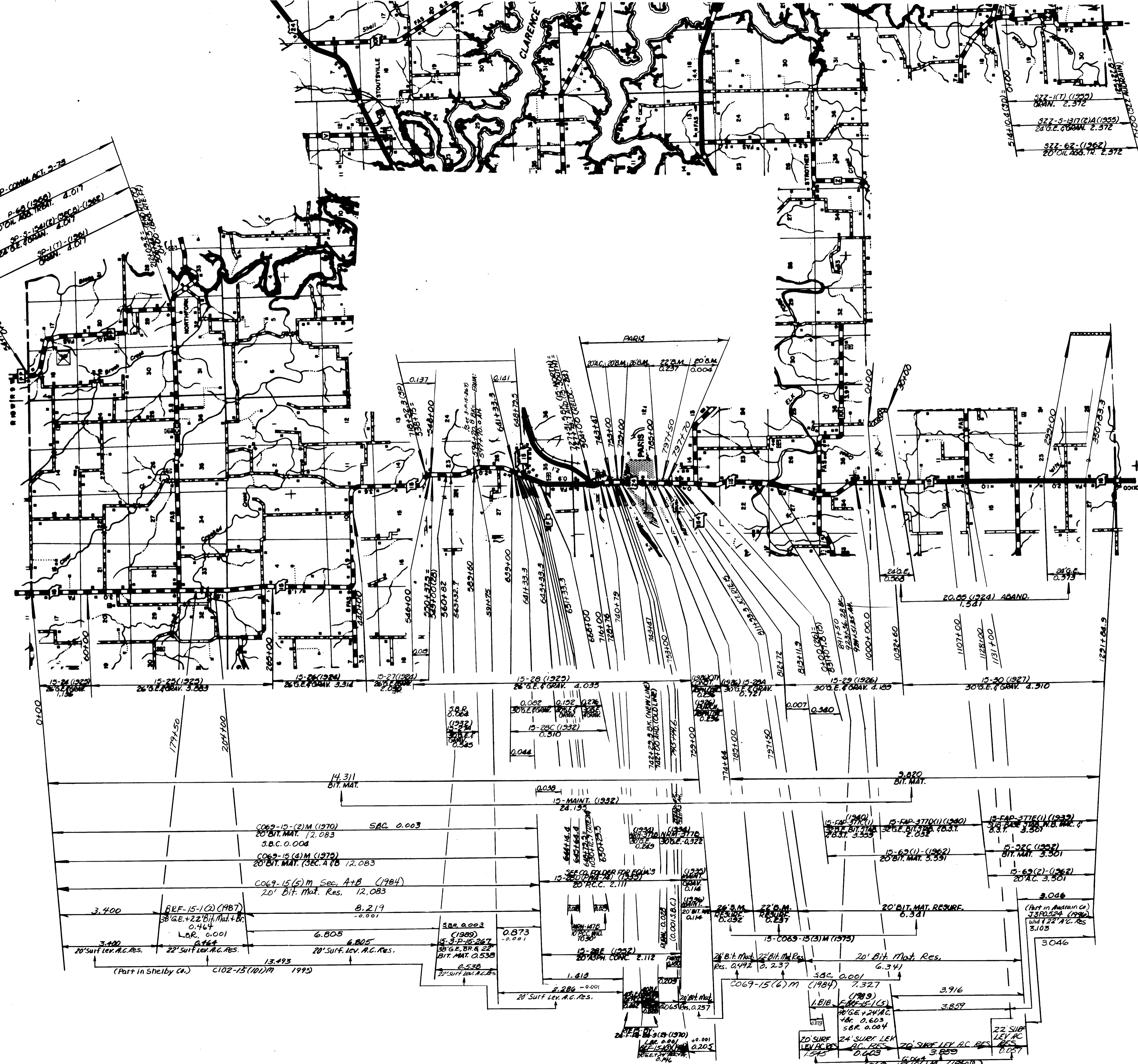


MARKED BY PP-COMM. ACT. 2-72
 P-69 (1969)
 20' OIL RES. TR. 4.017
 P-3-154(2) (SEC. C) (1962)
 24' O.E. RES. TR. 4.017
 P-1 (1) (1961)
 OIL RES. 4.017

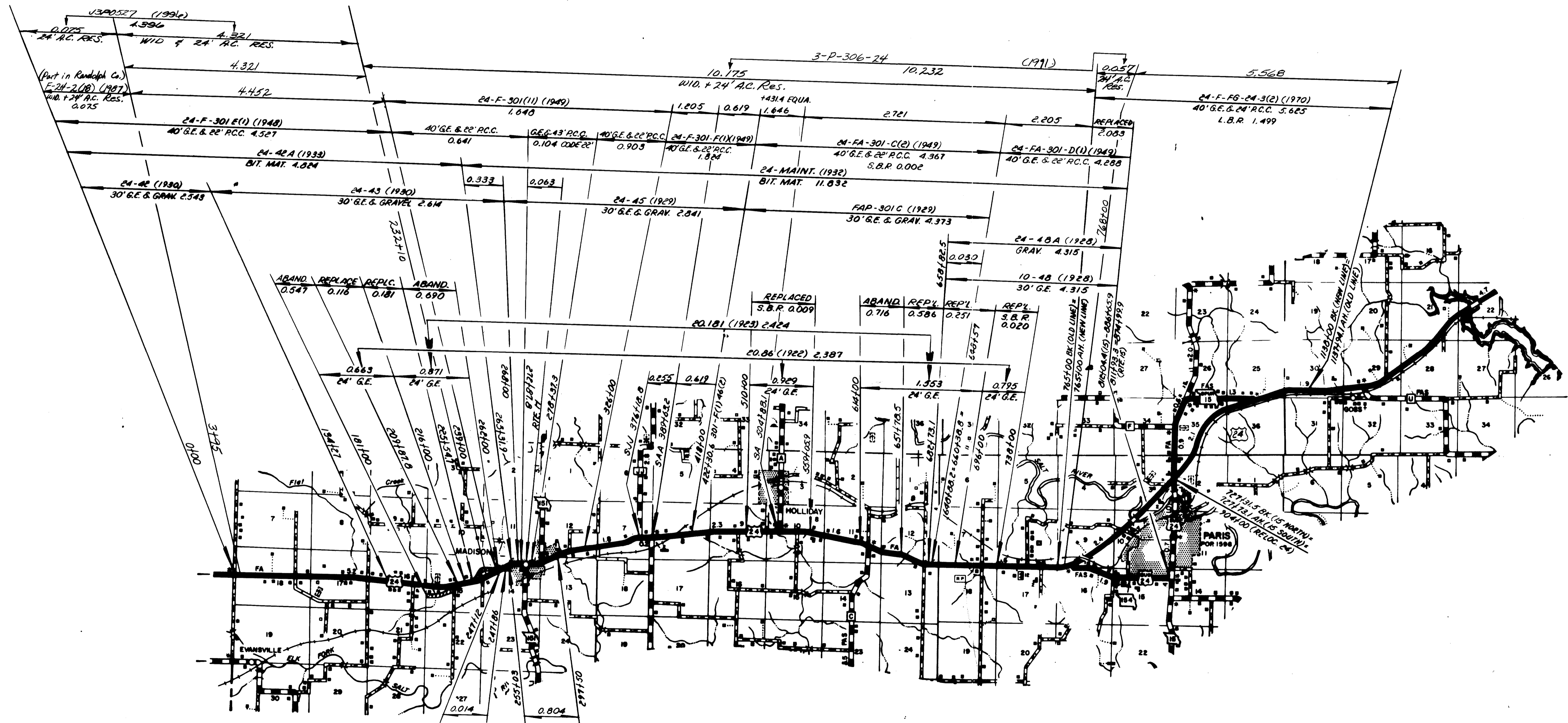
5141.01 (1970) = 0100
 527-1(T) (1955)
 OIL RES. 2.372
 527-3-137(2)A (1955)
 24' O.E. RES. TR. 2.372
 527-62- (1962)
 20' OIL RES. TR. 2.372



ROUTES 15
 PP
 ZZ

3

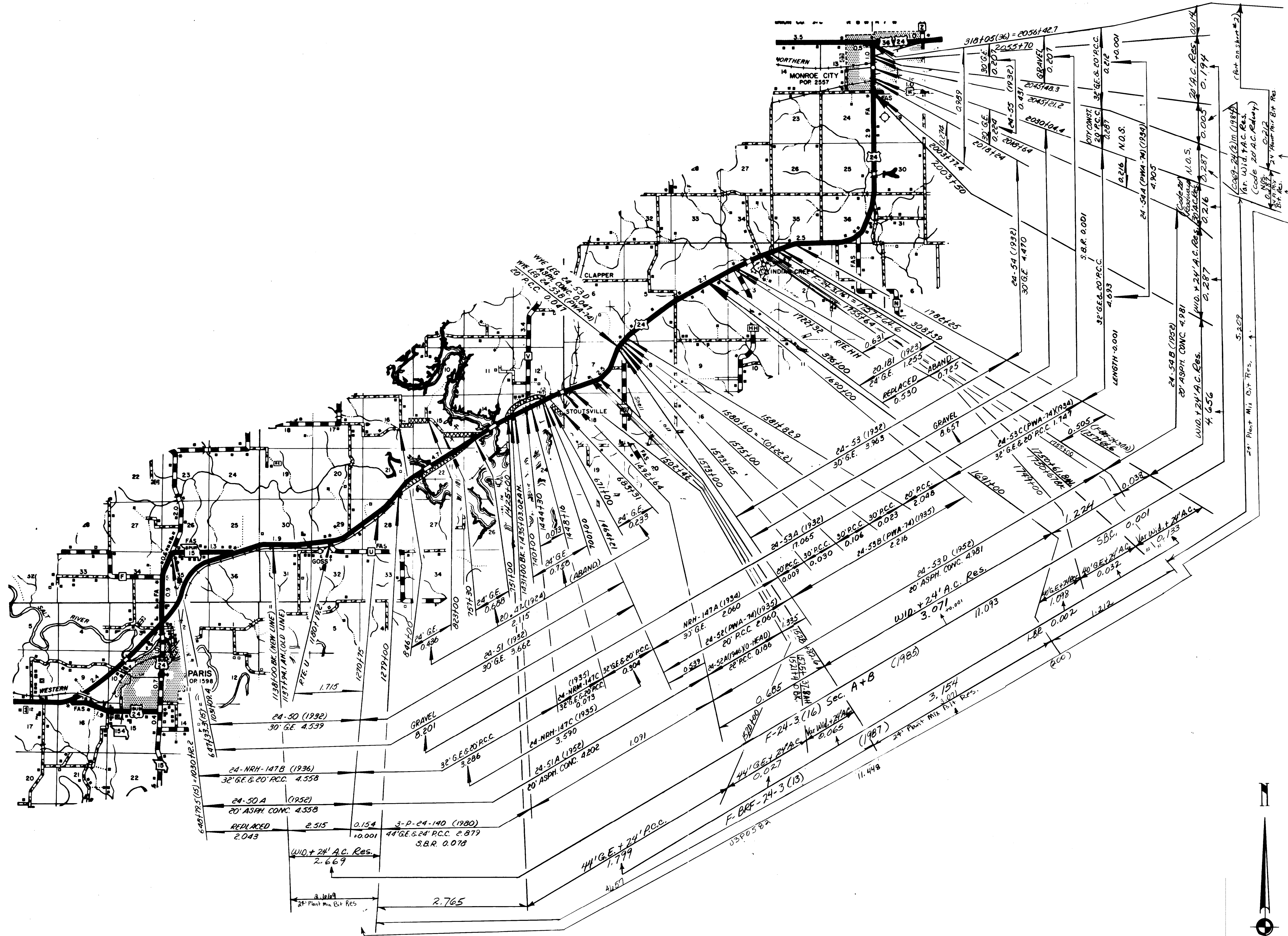
069 SHEET 1 OF 11
 MONROE



ROUTES:
24 (PART)

3

069 SHEET 3 OF 11
MONROE

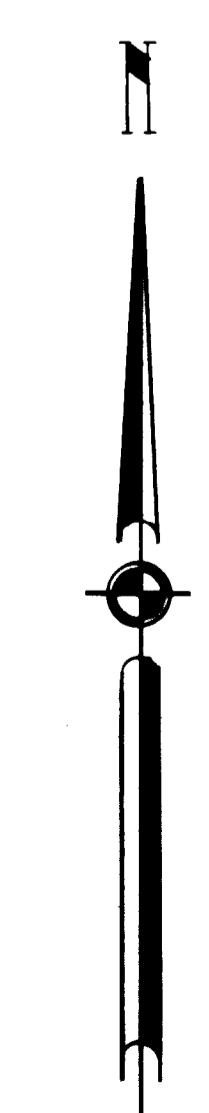
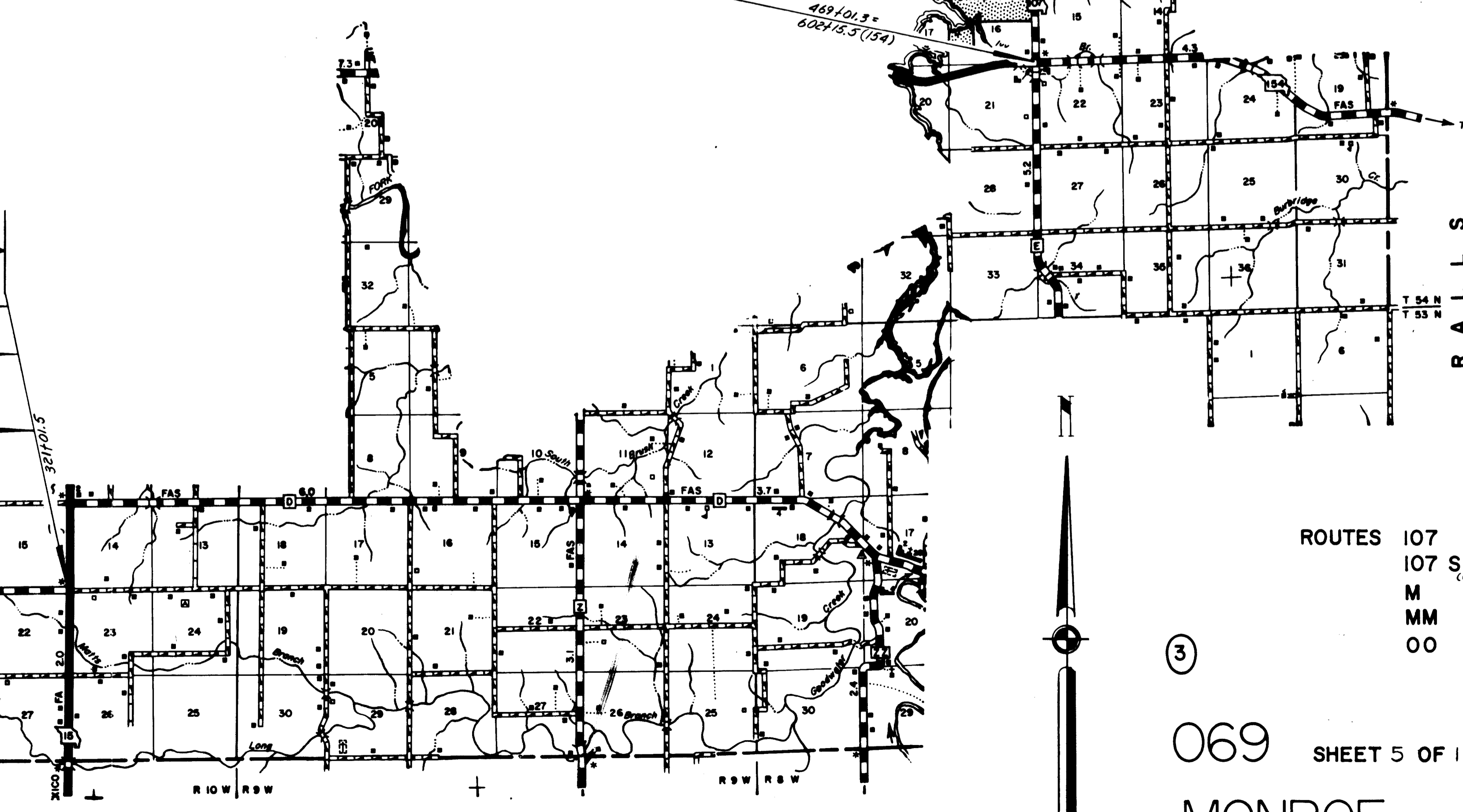
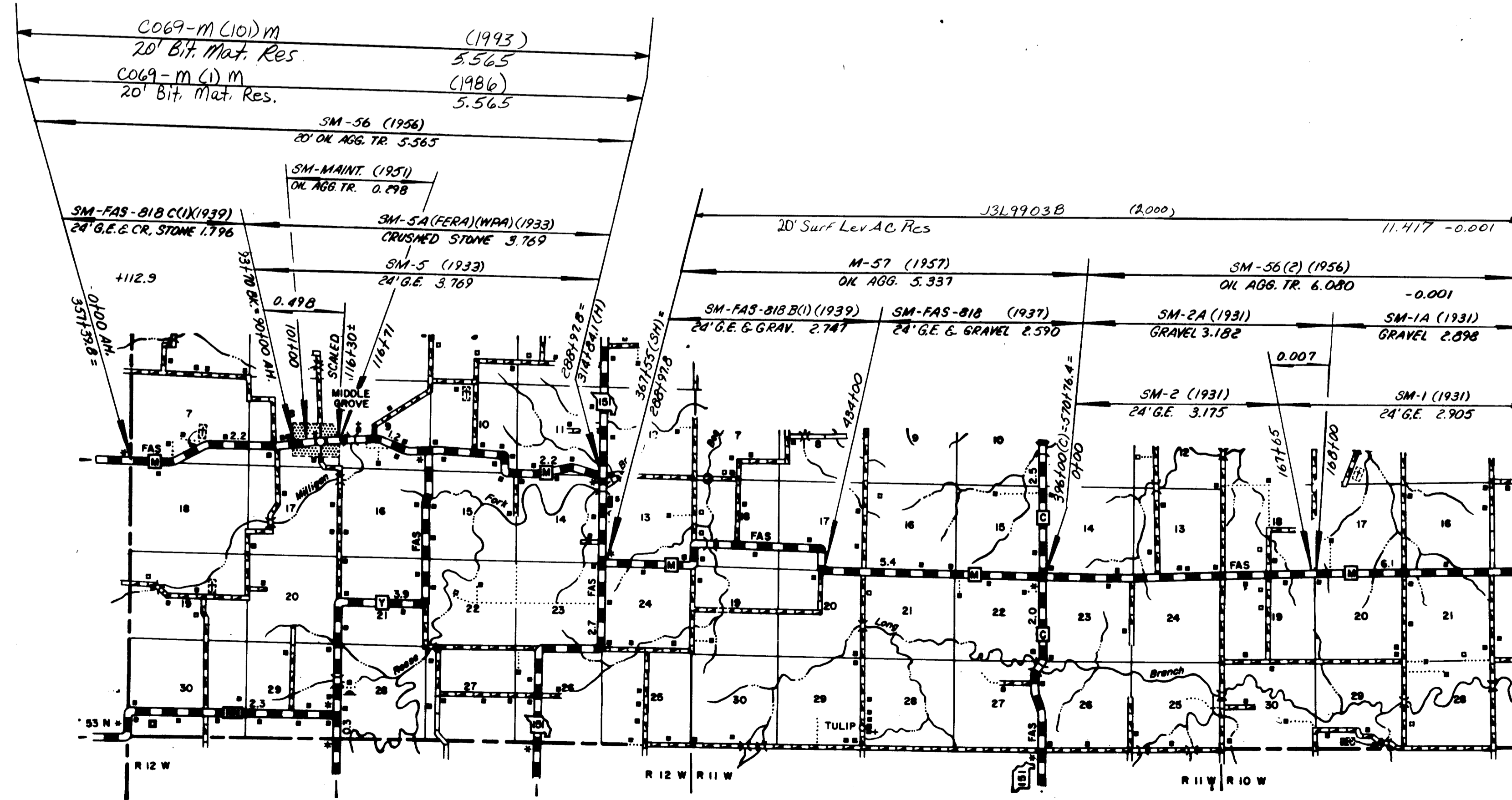
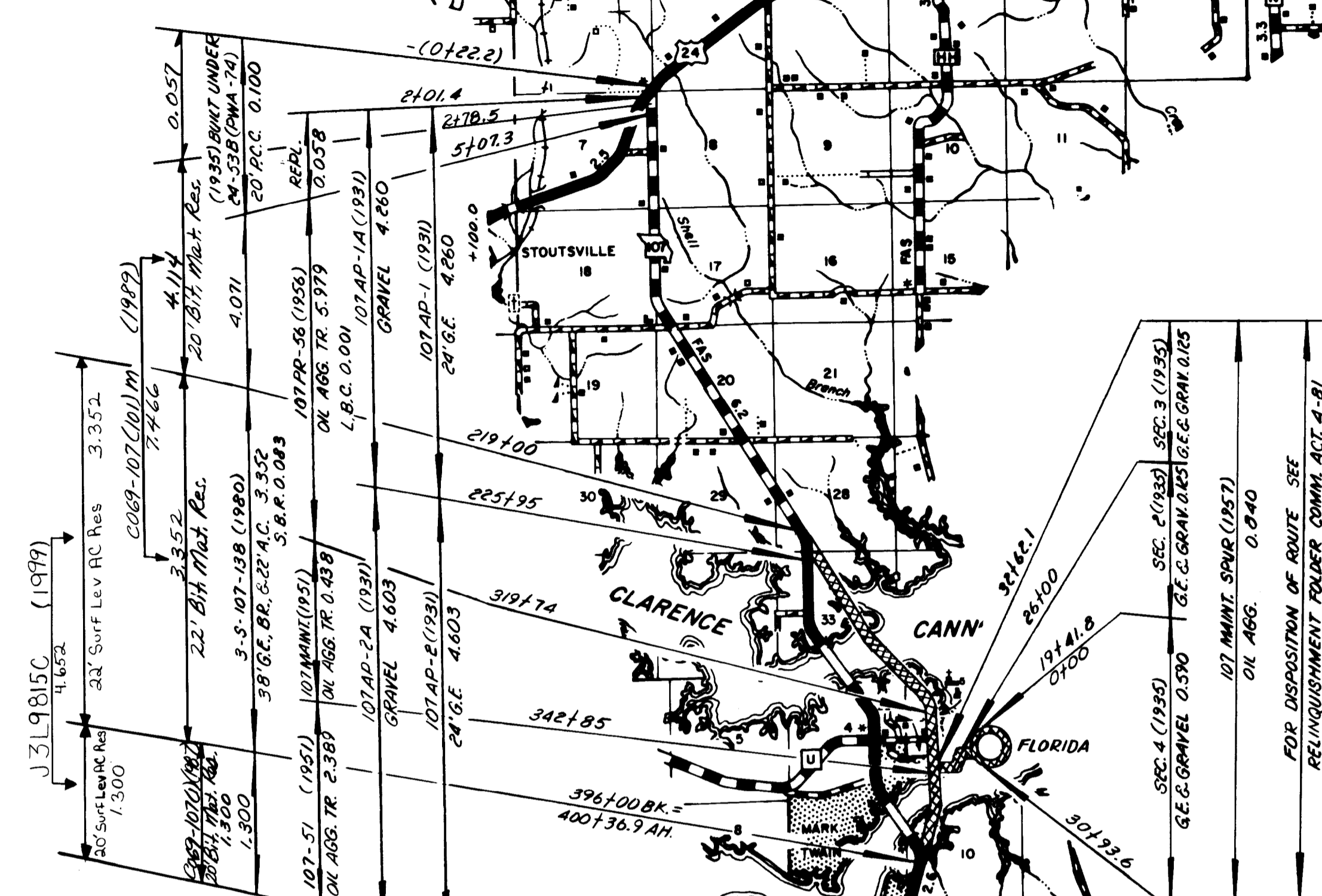
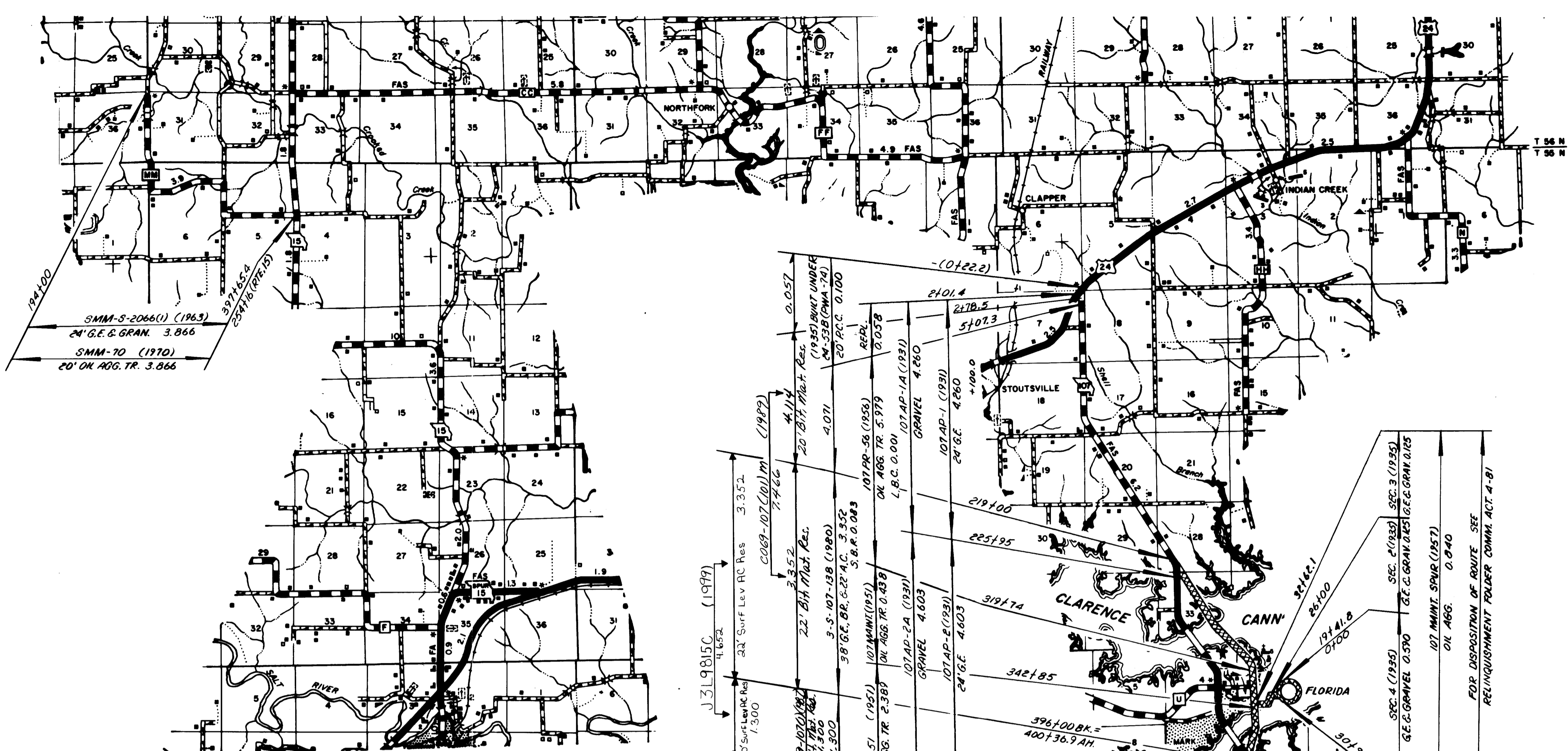
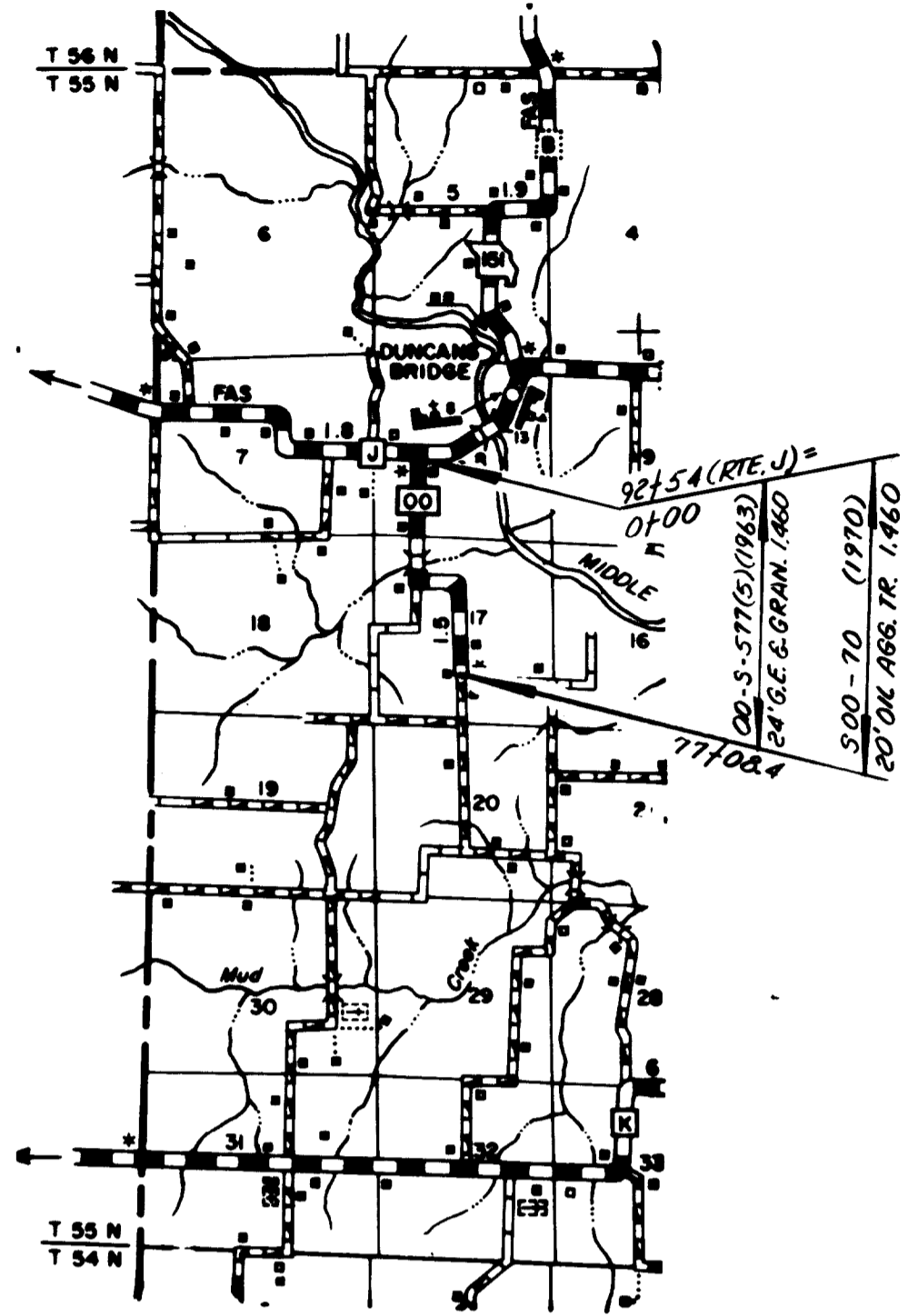


ROUTES:
 24 (PART)

3

069 SHEET 4 OF 11

MONROE



ROUTES 107
 107 SPUR
 M
 MM
 00

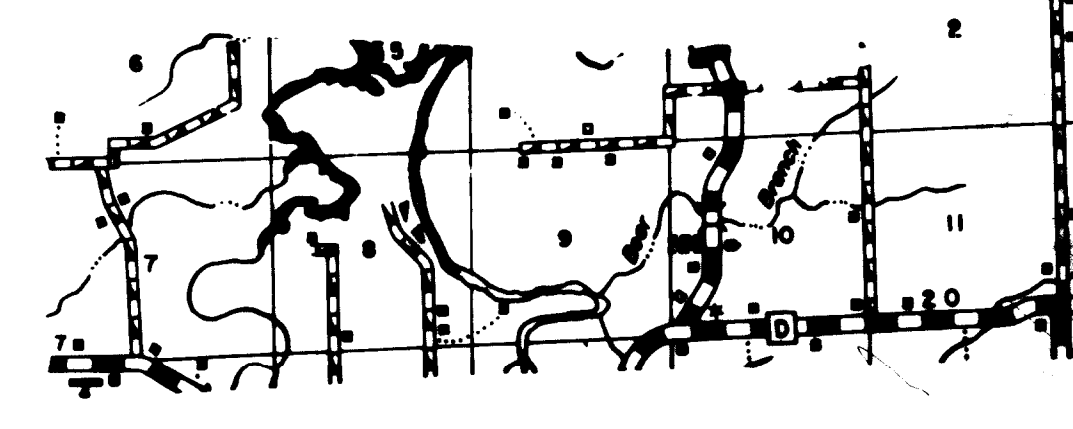
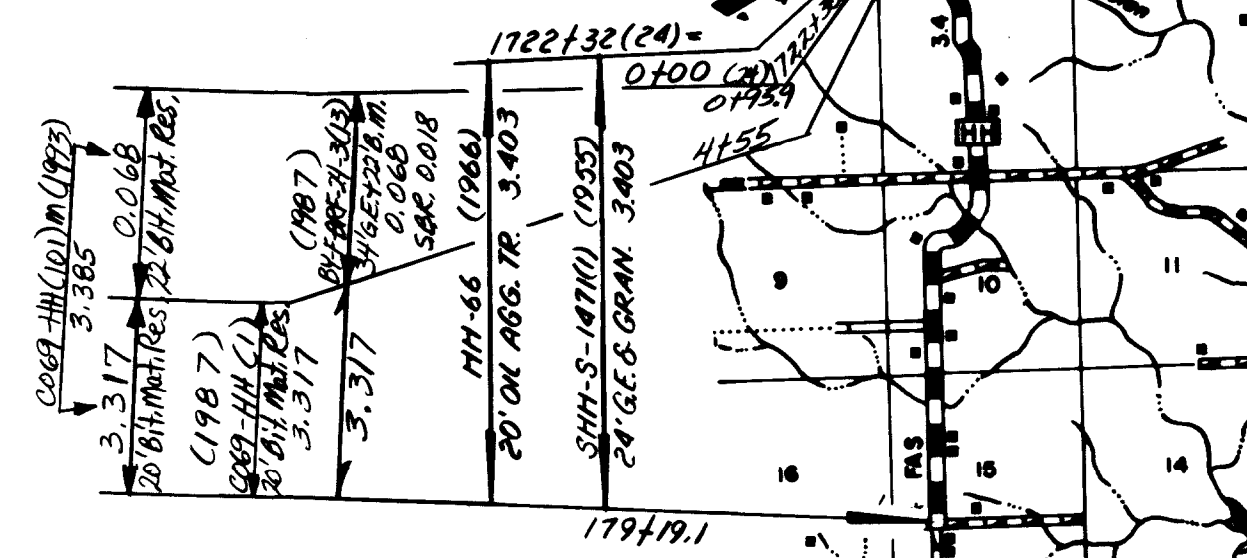
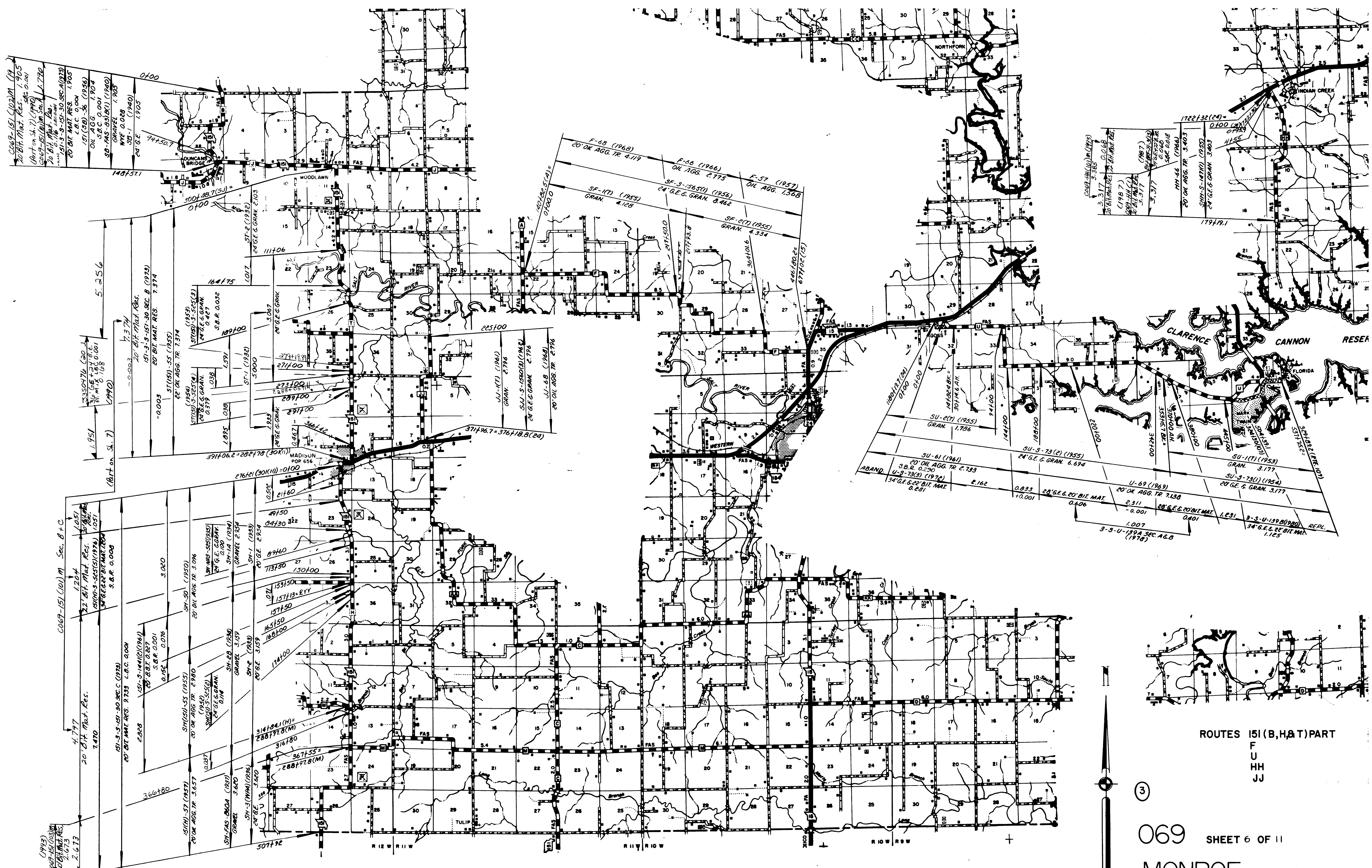
069 SHEET 5 OF 11
 MONROE

T T Y

R A L L S

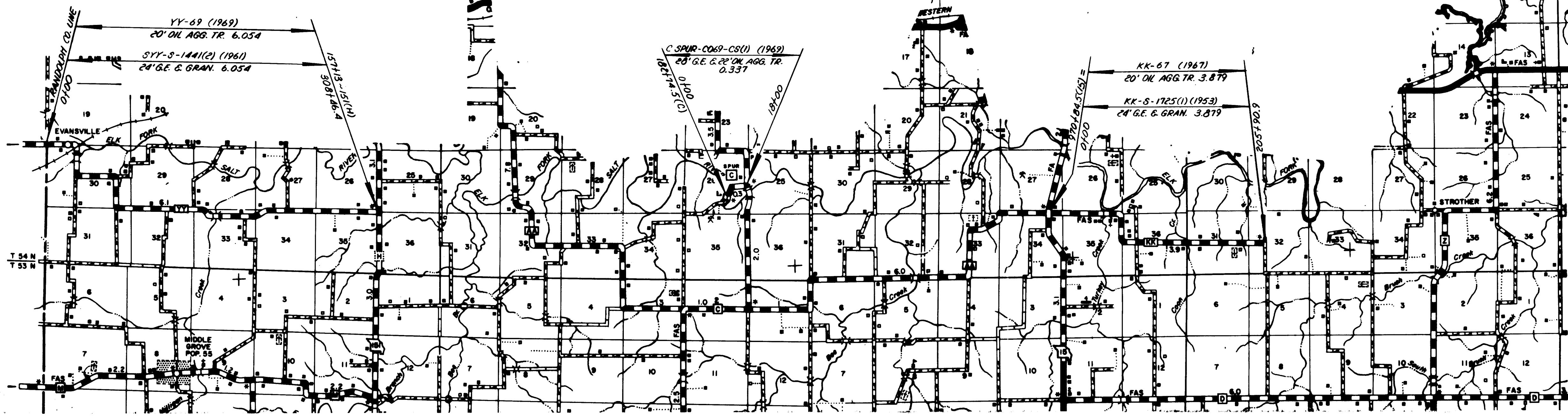
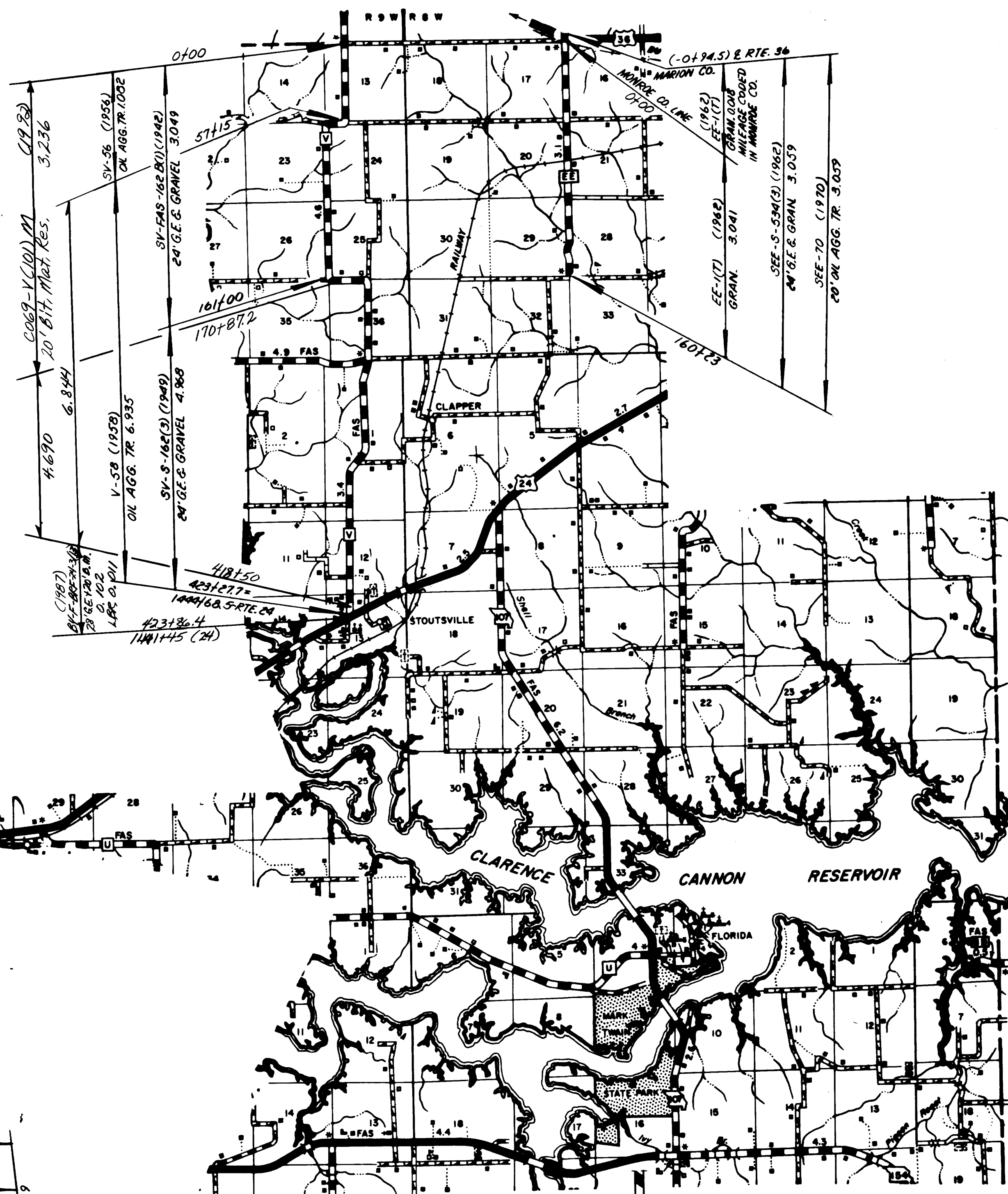
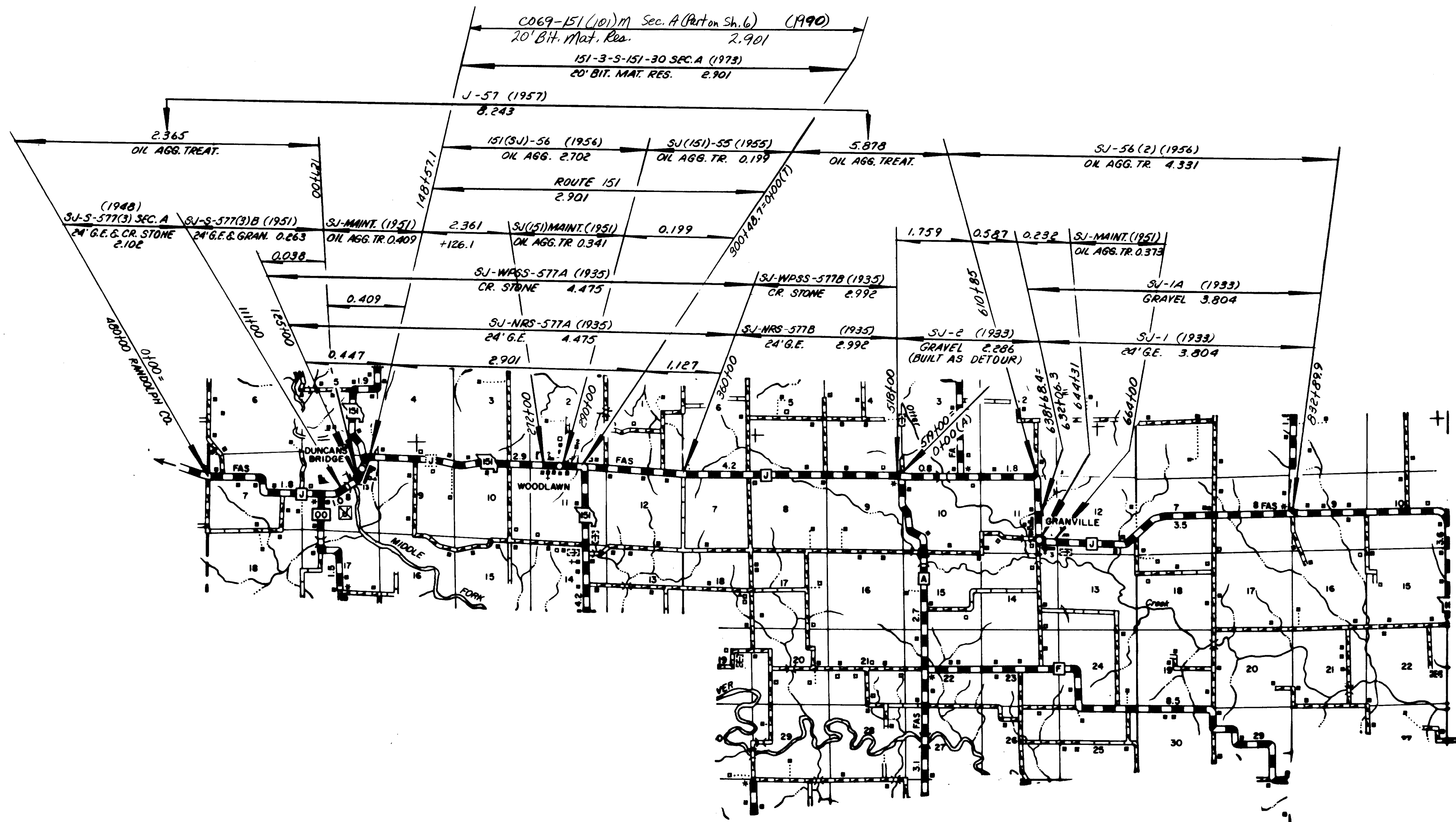
TO PERRY

3

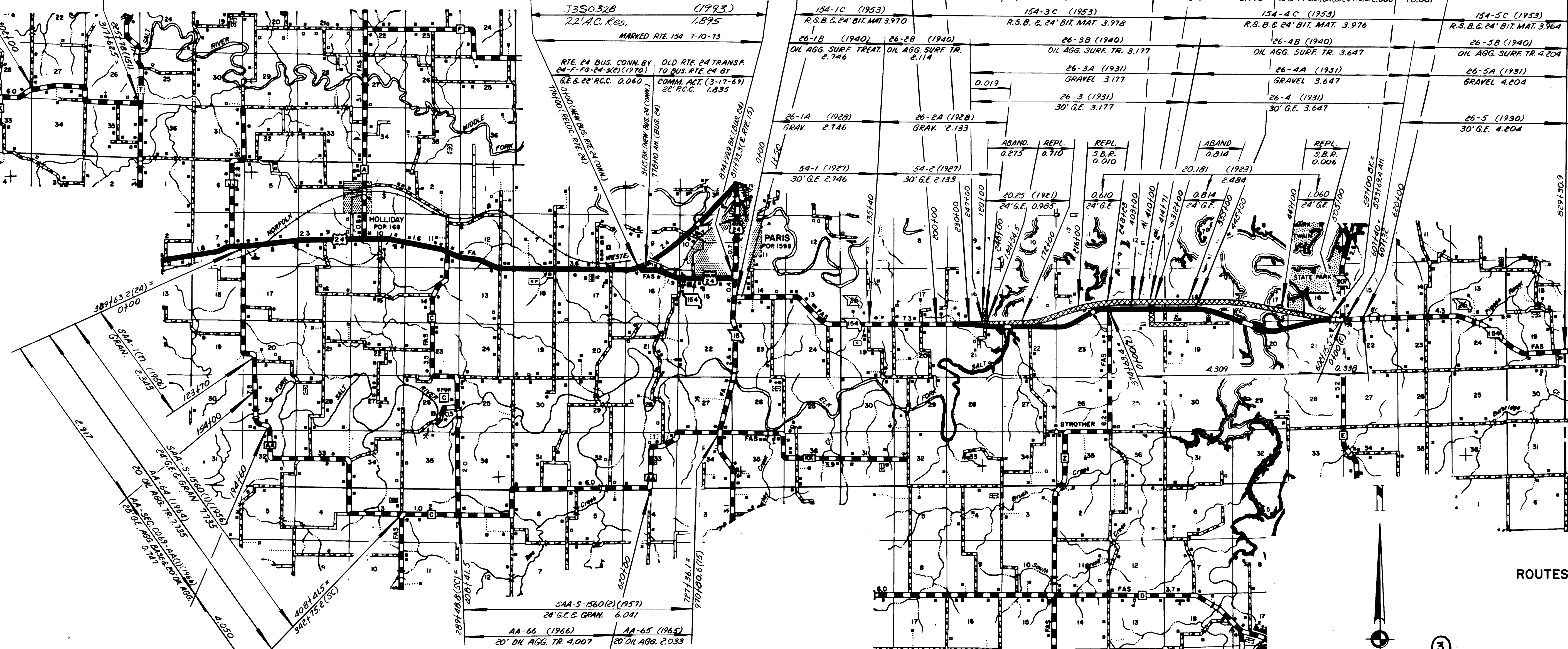
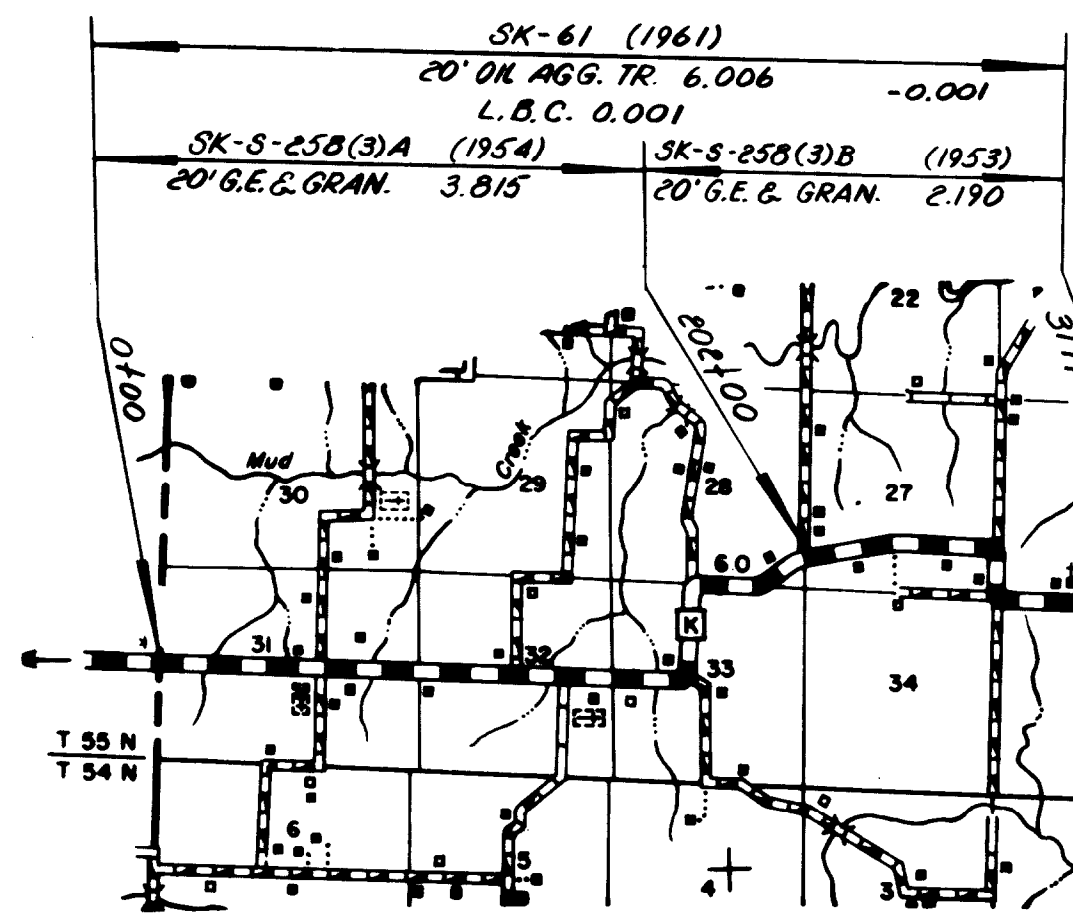
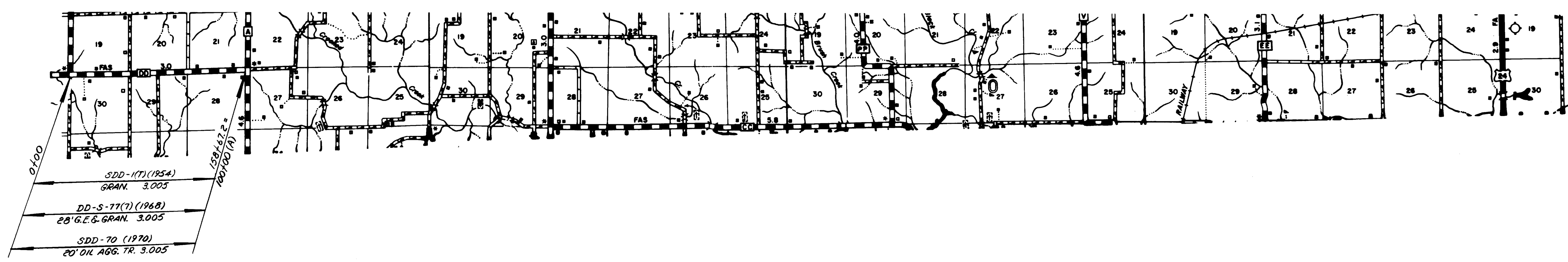


ROUTES 151 (B, H & T) PART
F
U
H
J

③

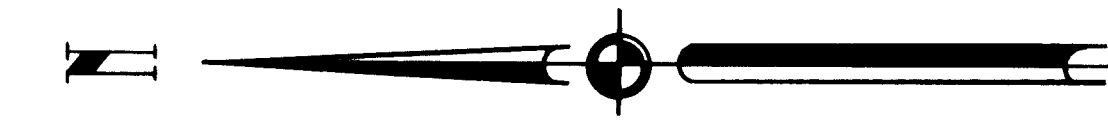
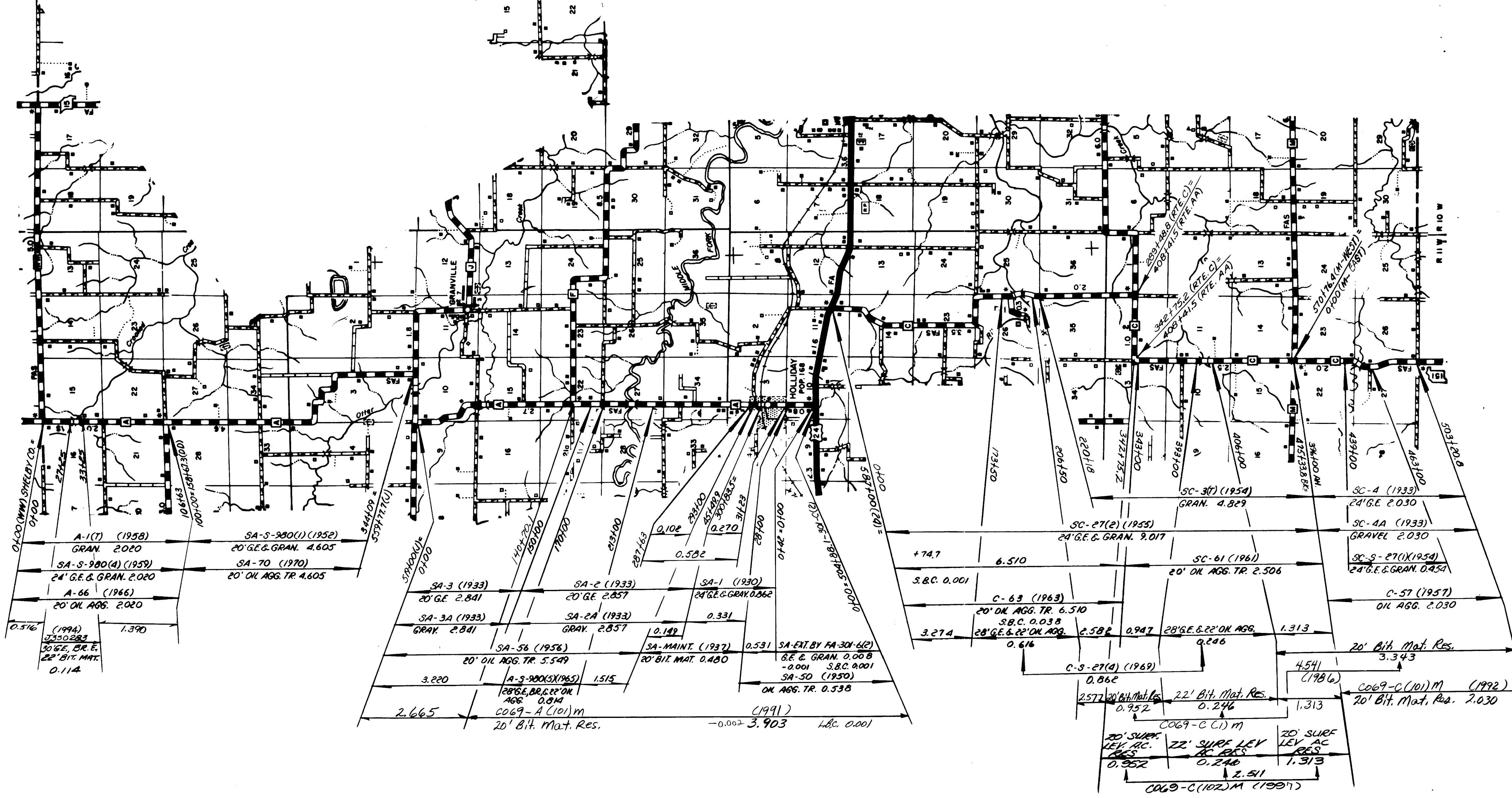
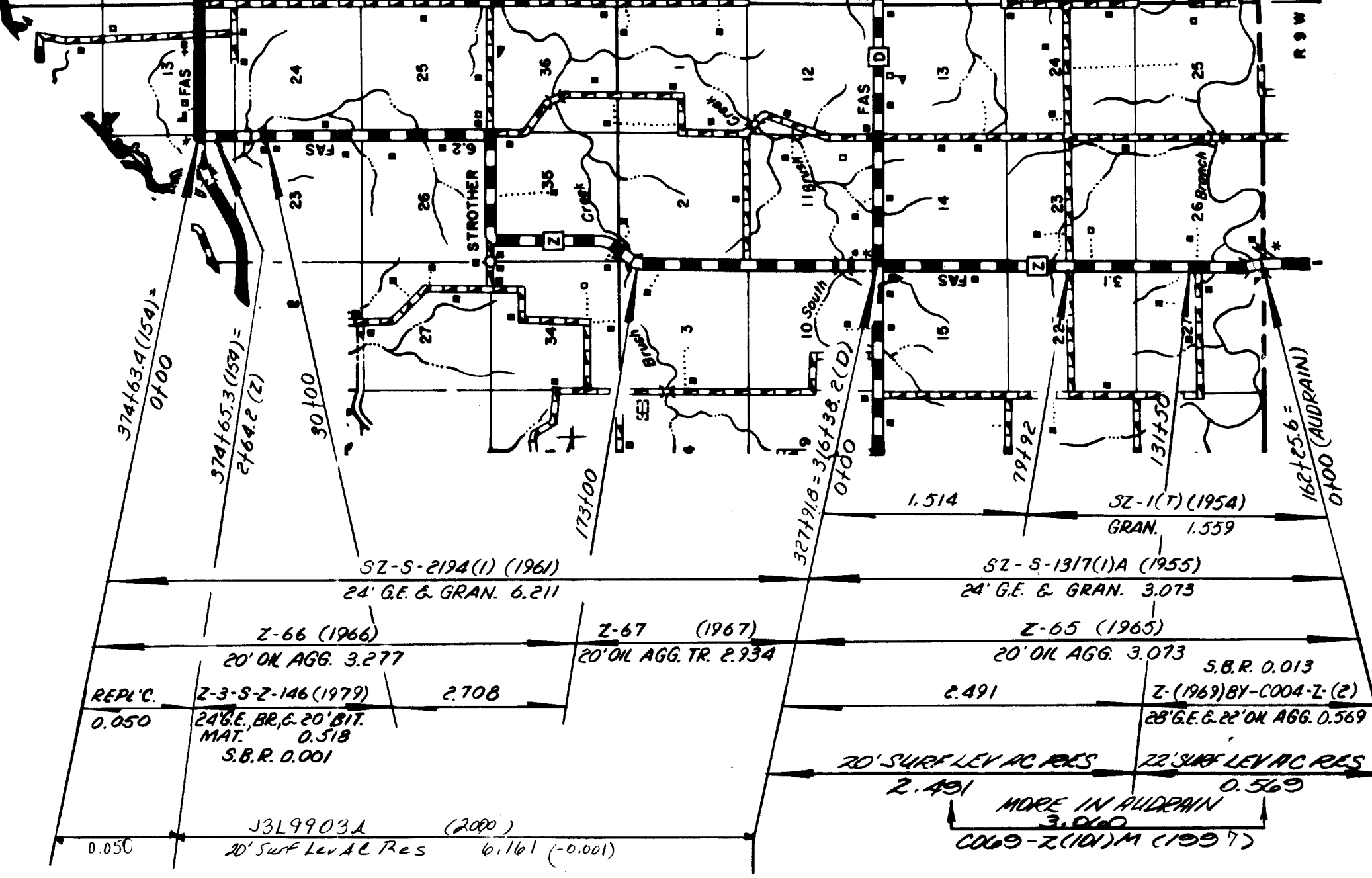
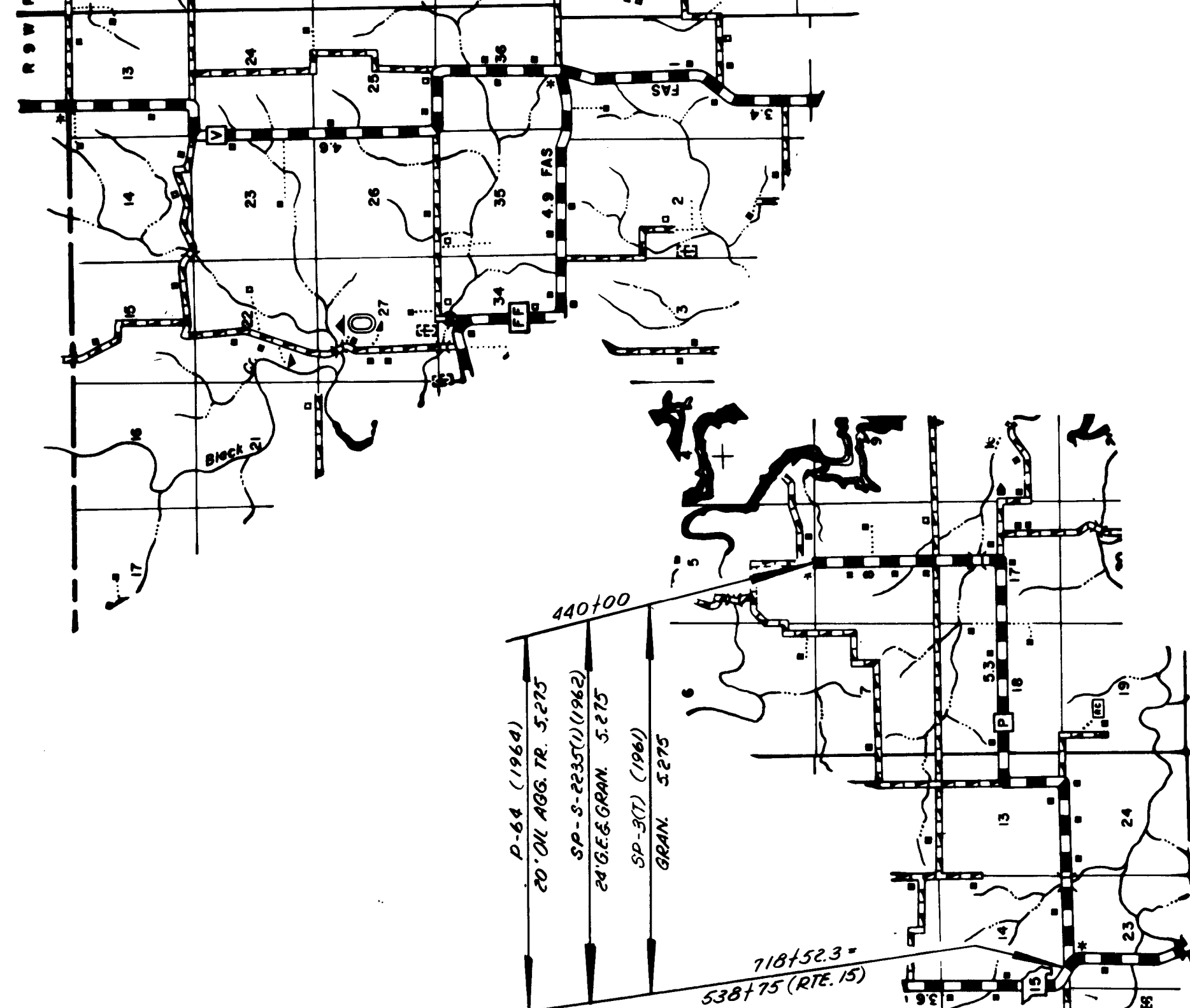


ROUTES:
 151(J) PART
 J
 V
 EE
 YY
 KK
 C SPUR
 069 SHEET 7 OF 11
 MONROE



③
 069 SHEET 8 OF 11
 MONROE

ROUTES 154
 AA
 DD
 K

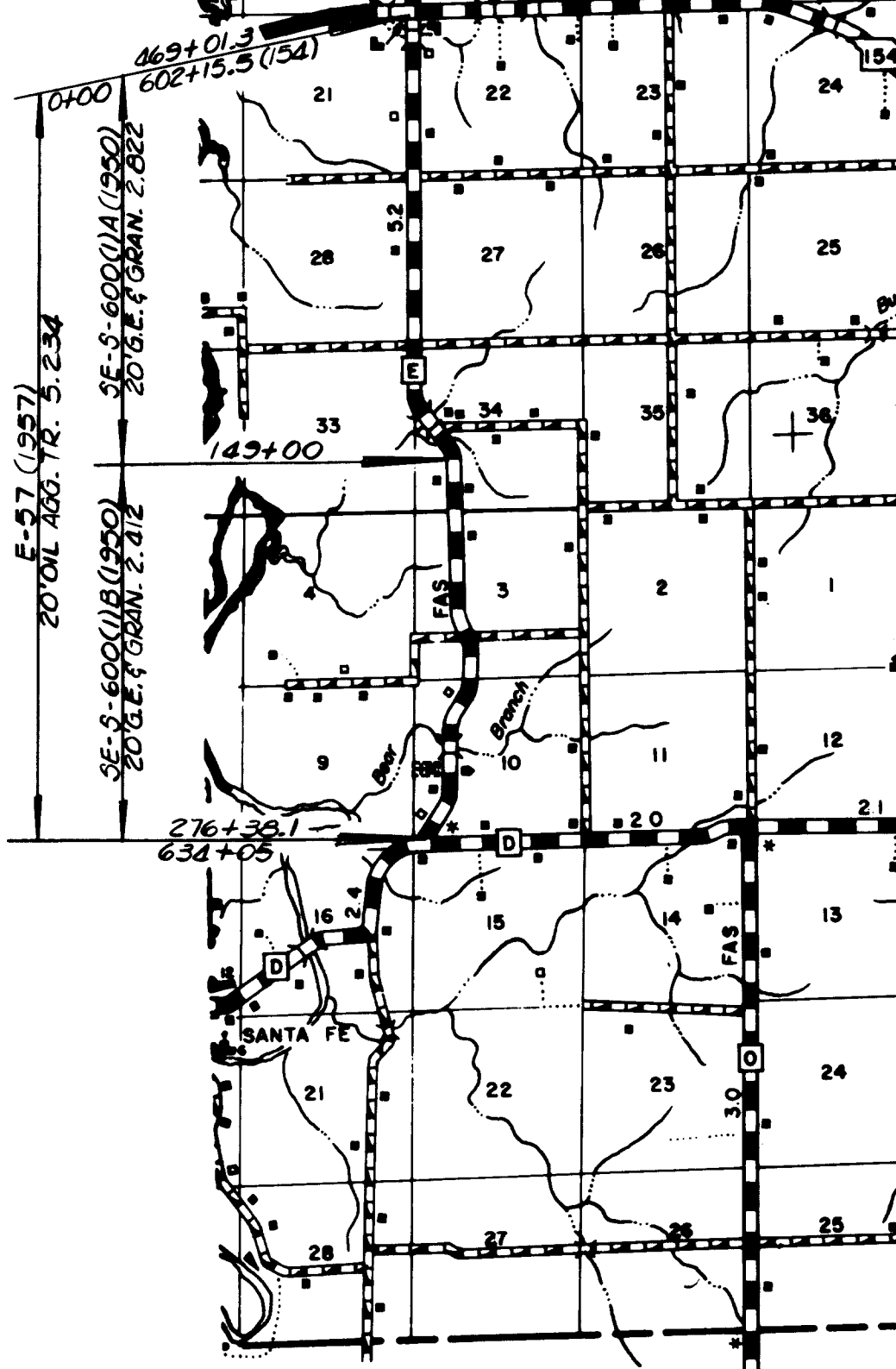
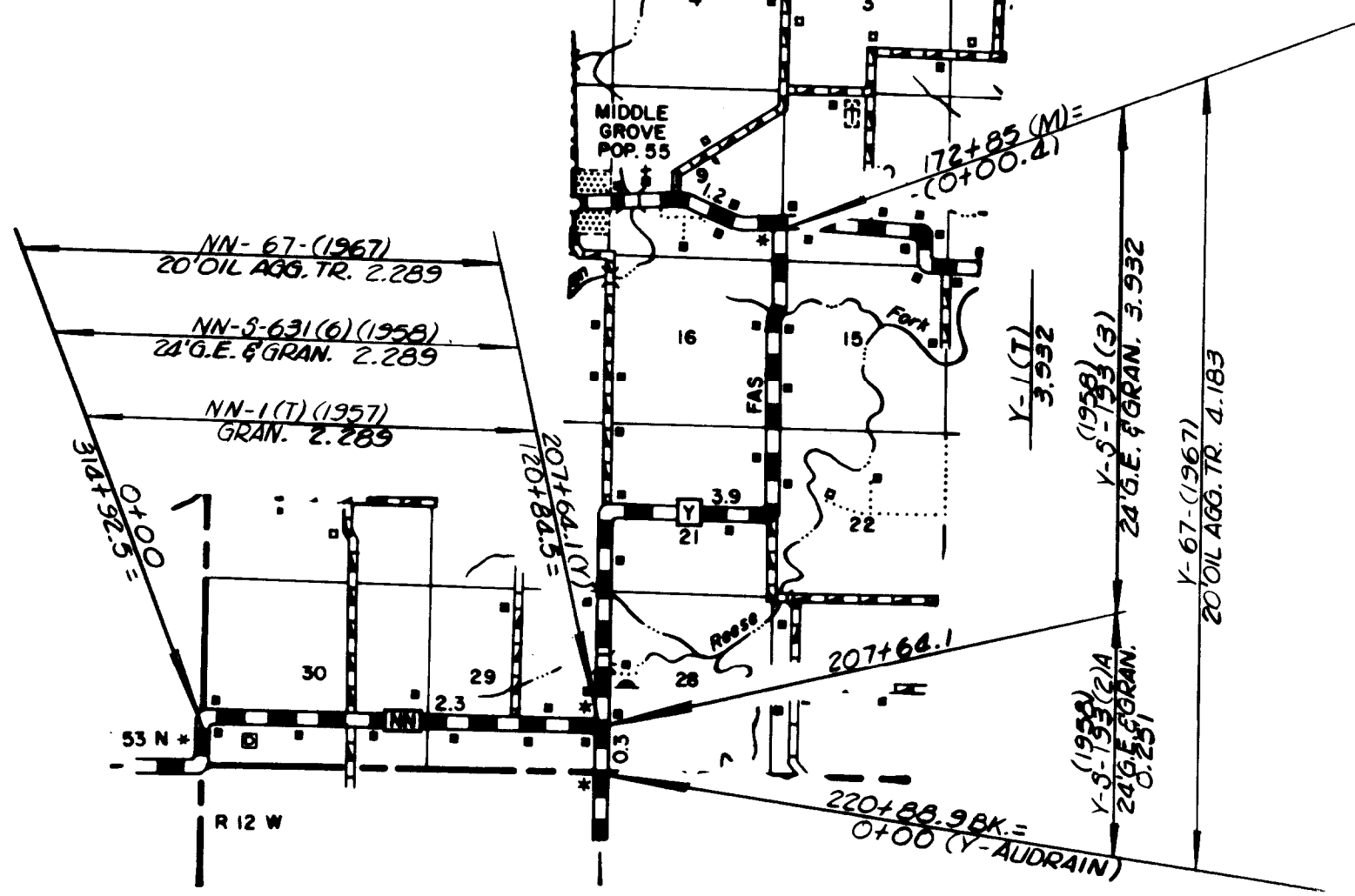
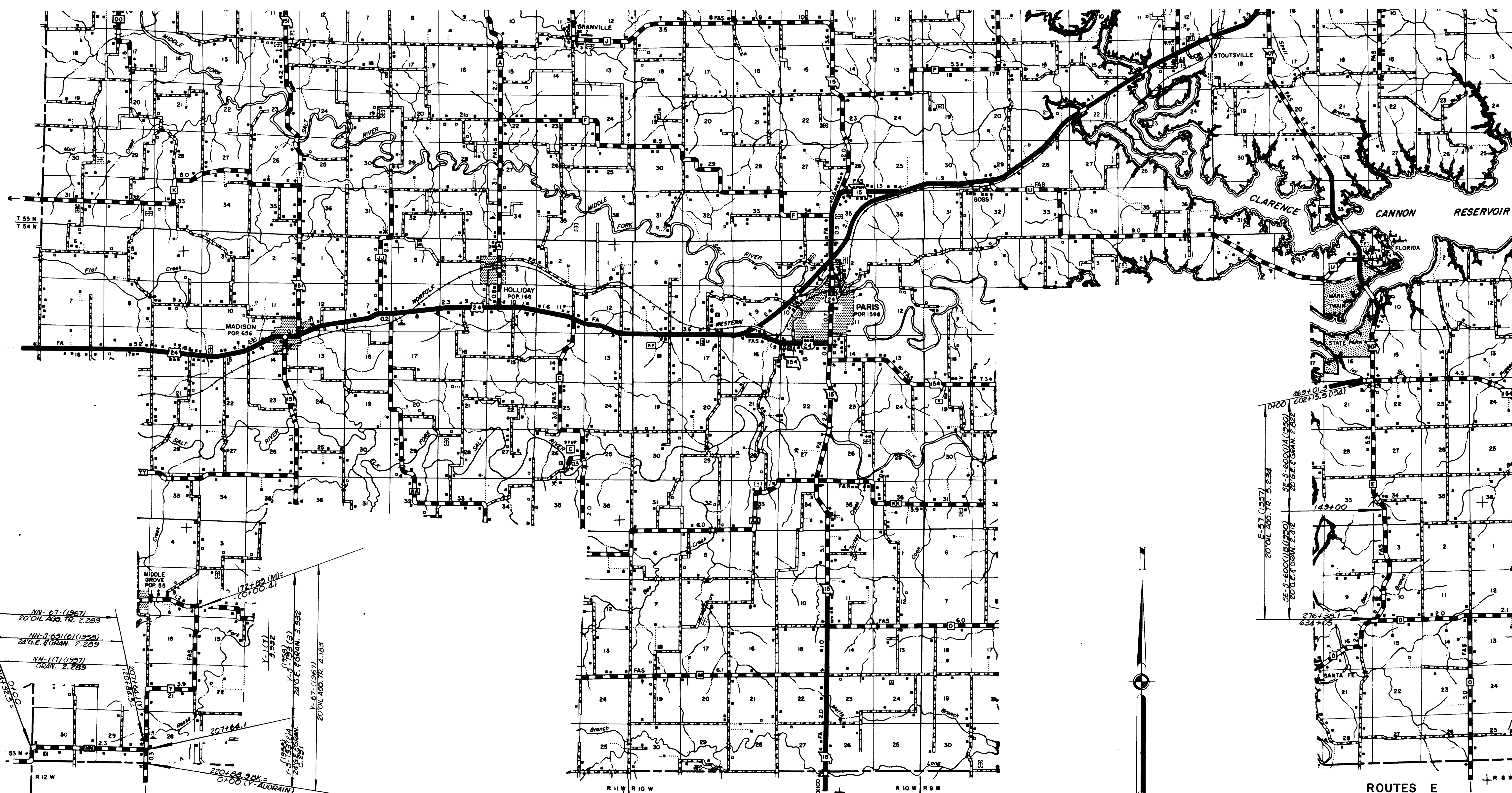


ROUTES
A
C
P
Z

3

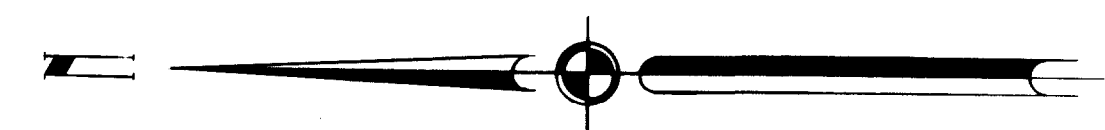
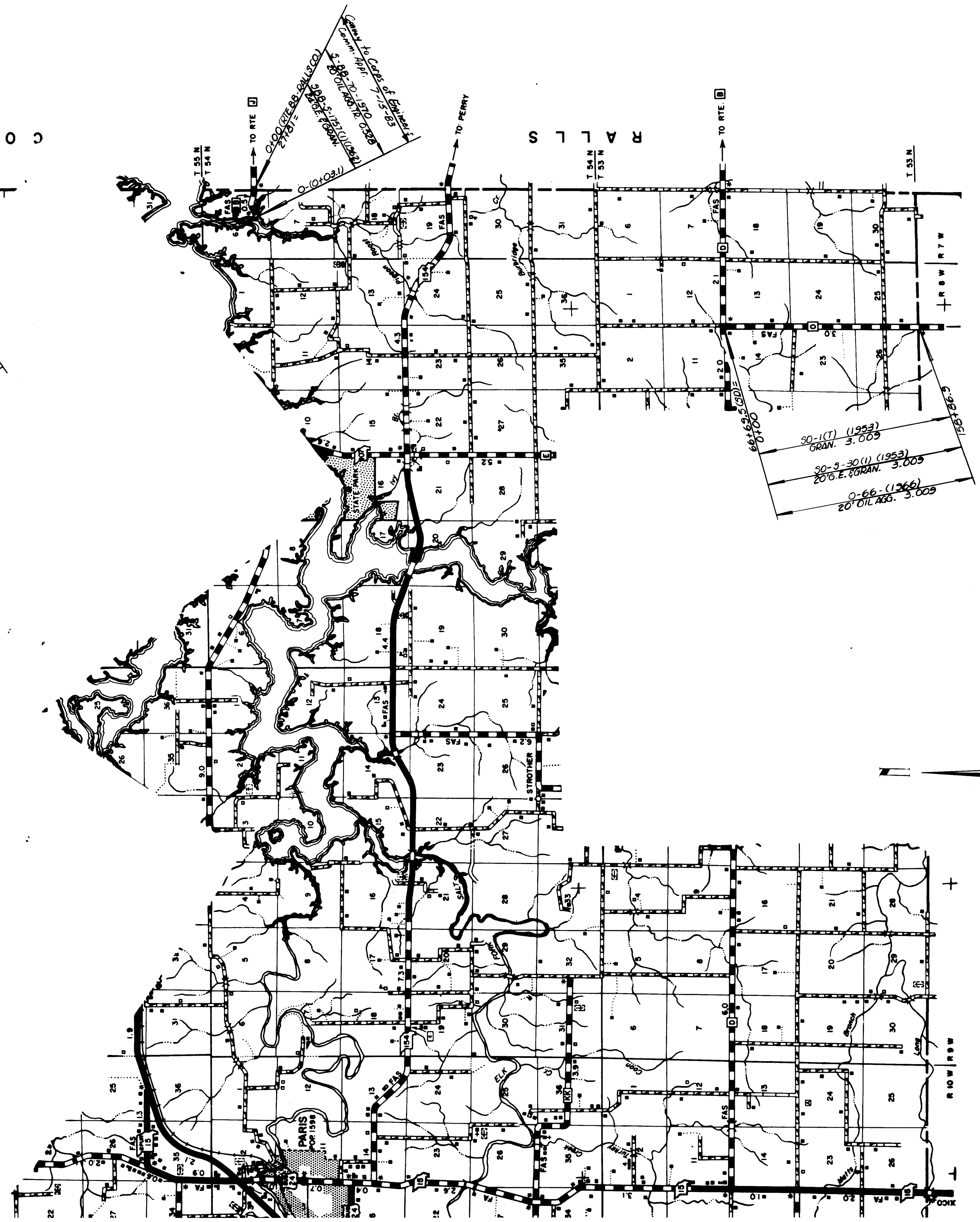
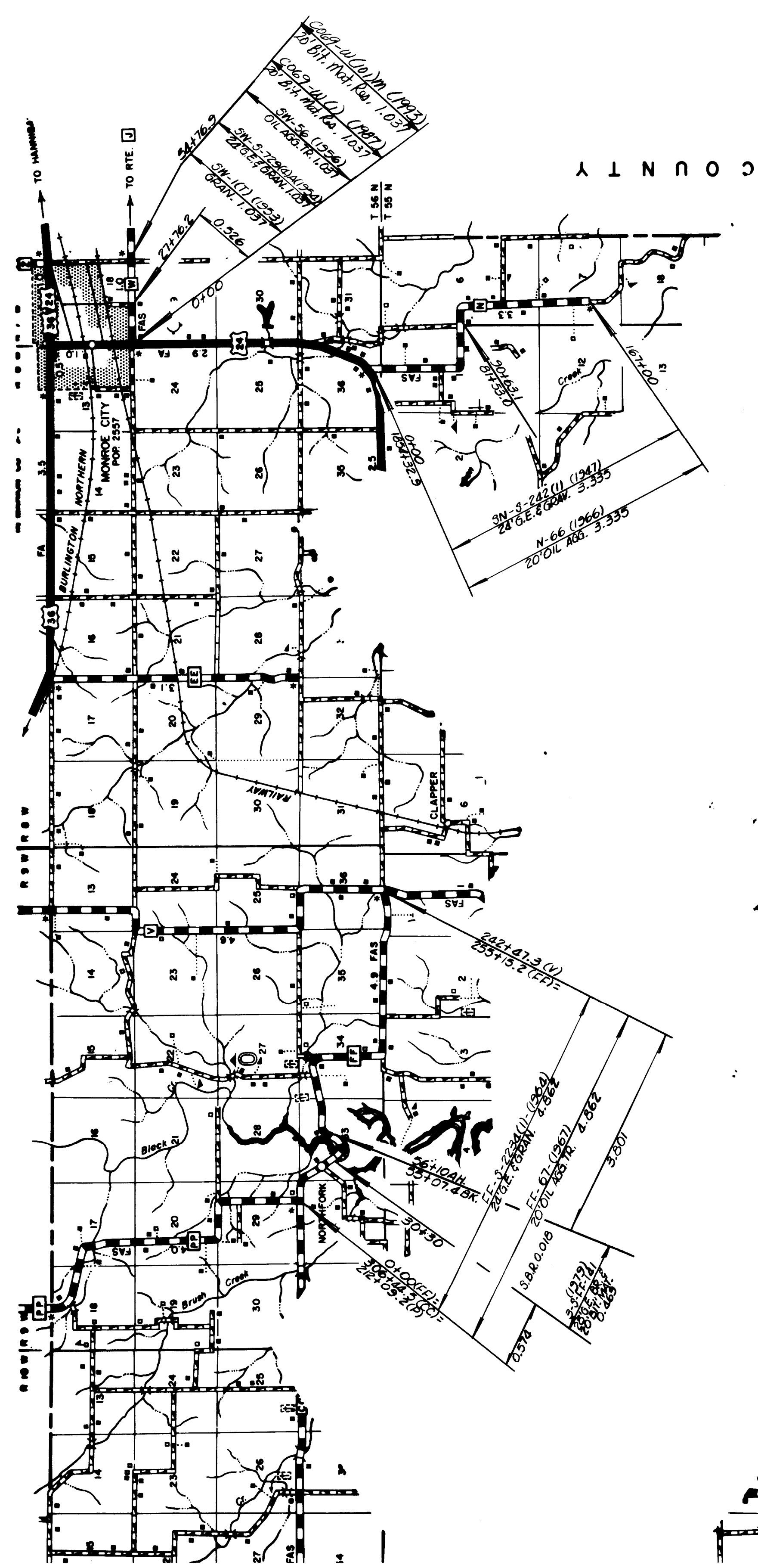
069 SHEET 9 OF 11

MONROE



③

ROUTES E
Y
NN



ROUTES
 N
 W
 BB-Historical
 FF

③
 069
 MONROE

SHEET 11 OF 11