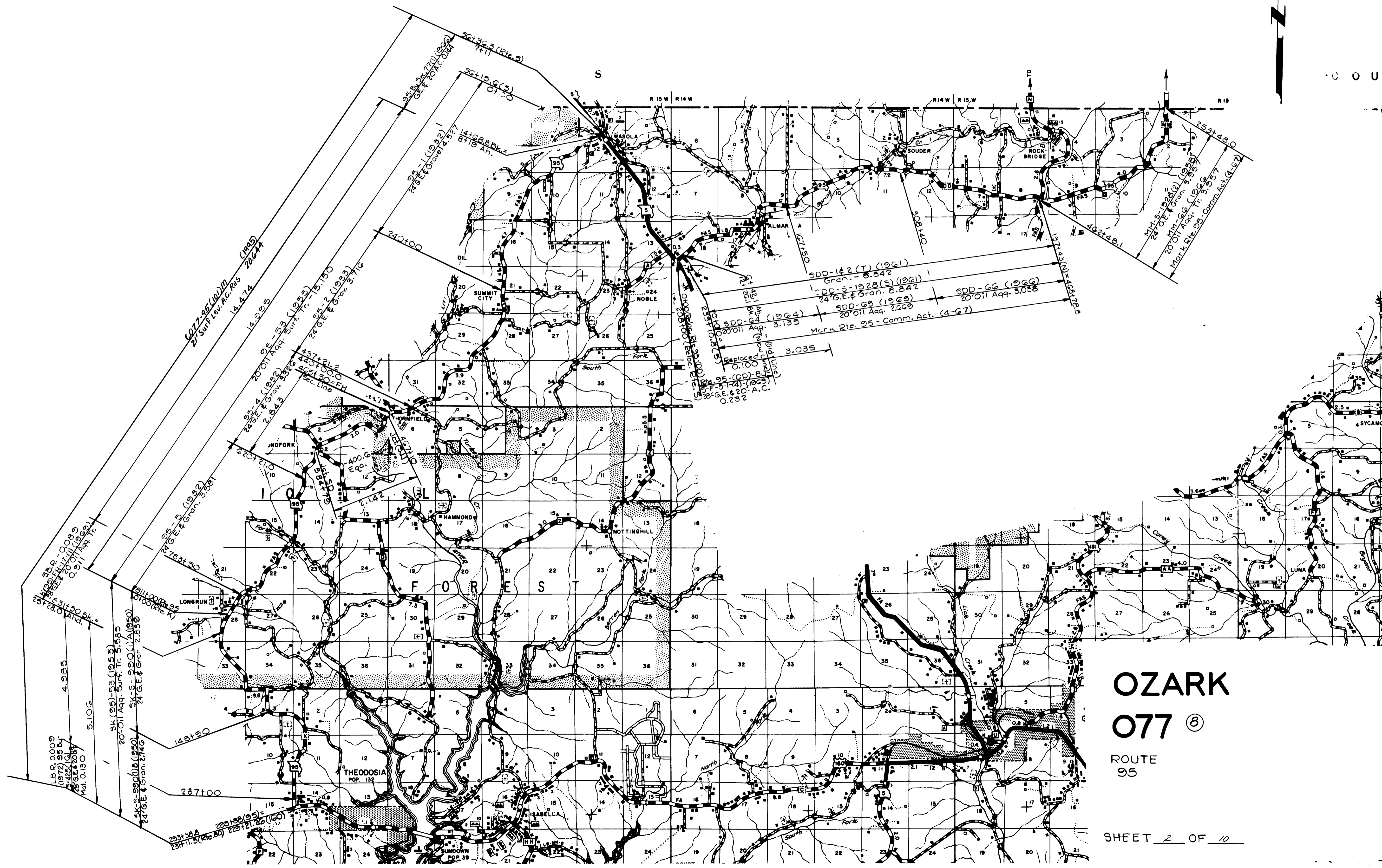


# OZARK 077

ROUTE  
5-MM-5 HISTORY- NO HISTORY



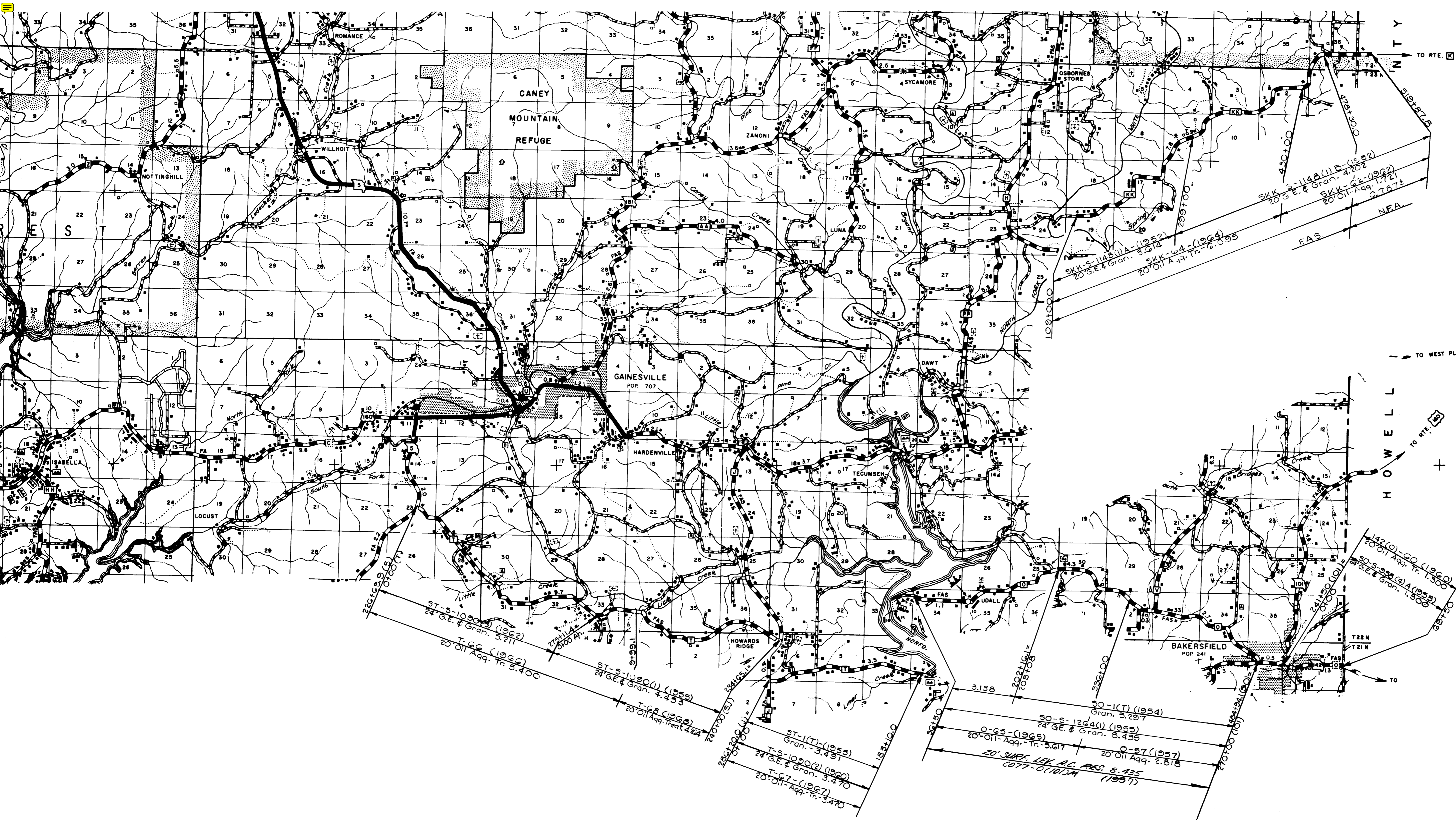


**OZARK**  
**077** ⑧  
 ROUTE  
 95









# OZARK O77 ©

ROUTES  
142  
O  
T  
KK

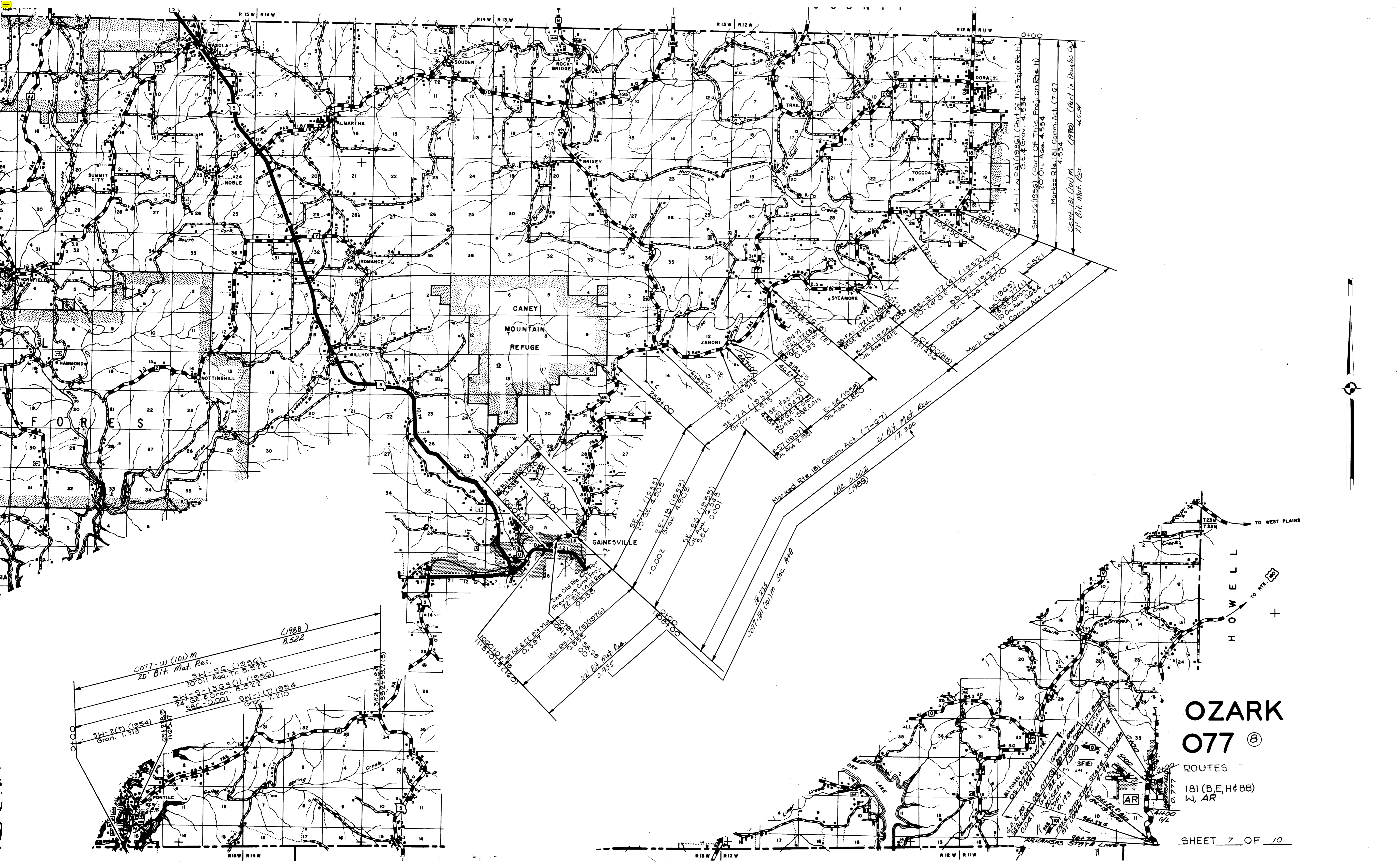












# OZARK 077

ROUTES  
181 (B, E, H & BB)  
W, AR

(1988)  
8.522  
C077-W (10) m  
20' Bit. Mat. Res.  
SW-56 (1956)  
20 Oil Acq. Tr. 8.522  
SW-9-1363 (1) (1956)  
24 GE & Gran. 8.522  
38C-0001 SW-1 (7) 1954  
Gran. 7.210

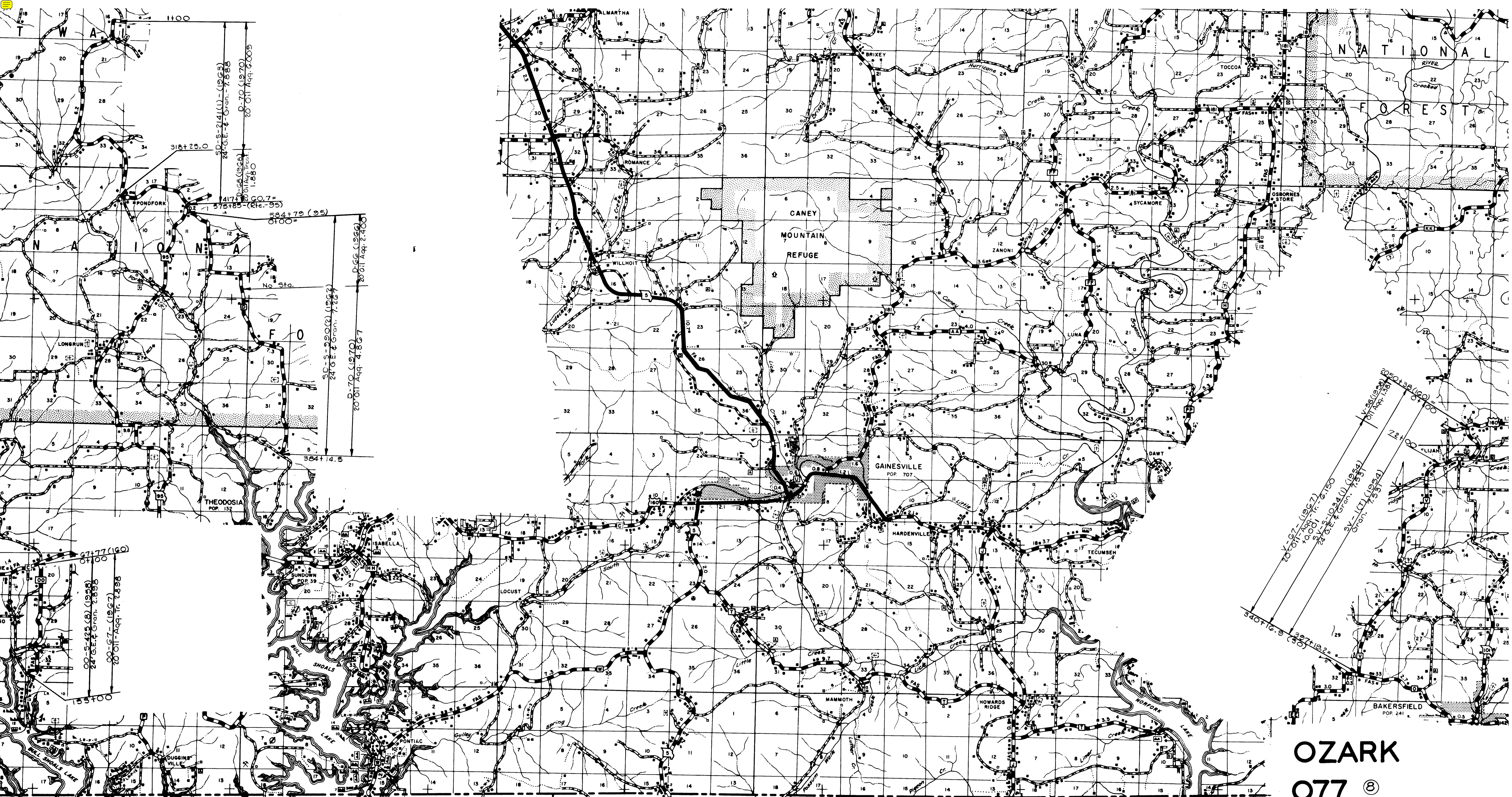
100-10-2-3-19  
115-10-3-170  
181-23-172 (5) (1976)  
0-997  
0-995  
0-996  
22' Bit. Mat. Res.  
0-935

SE-1 (1933)  
20' GE 4.908  
SE-1B (1933)  
Grav. 4.905  
SE-55 (1955)  
Oil Acq. 6.378  
38C 0.0018  
E-58 (1958)  
Oil Acq. 1.850  
Marked Ete. (B) Comm. Act. (7-67)  
21' Bit. Mat. Res.  
17.300  
18-235  
C077-B1 (10) m Sec. 11B

SE-2A (1932)  
20' GE 4.918  
Grav. 4.915  
SE-17 (1937)  
Oil Acq. 2.881  
E-58 (1958)  
Oil Acq. 1.850  
SE-17 (1937)  
Oil Acq. 2.881  
E-58 (1958)  
Oil Acq. 1.850  
SE-17 (1937)  
Oil Acq. 2.881  
E-58 (1958)  
Oil Acq. 1.850  
SE-17 (1937)  
Oil Acq. 2.881  
E-58 (1958)  
Oil Acq. 1.850

AR  
C077-W (10) m  
20' Bit. Mat. Res.  
C077-B1 (10) m  
20' Bit. Mat. Res.  
C077-B2 (10) m  
20' Bit. Mat. Res.  
C077-B3 (10) m  
20' Bit. Mat. Res.  
C077-B4 (10) m  
20' Bit. Mat. Res.  
C077-B5 (10) m  
20' Bit. Mat. Res.  
C077-B6 (10) m  
20' Bit. Mat. Res.  
C077-B7 (10) m  
20' Bit. Mat. Res.  
C077-B8 (10) m  
20' Bit. Mat. Res.  
C077-B9 (10) m  
20' Bit. Mat. Res.  
C077-B10 (10) m  
20' Bit. Mat. Res.

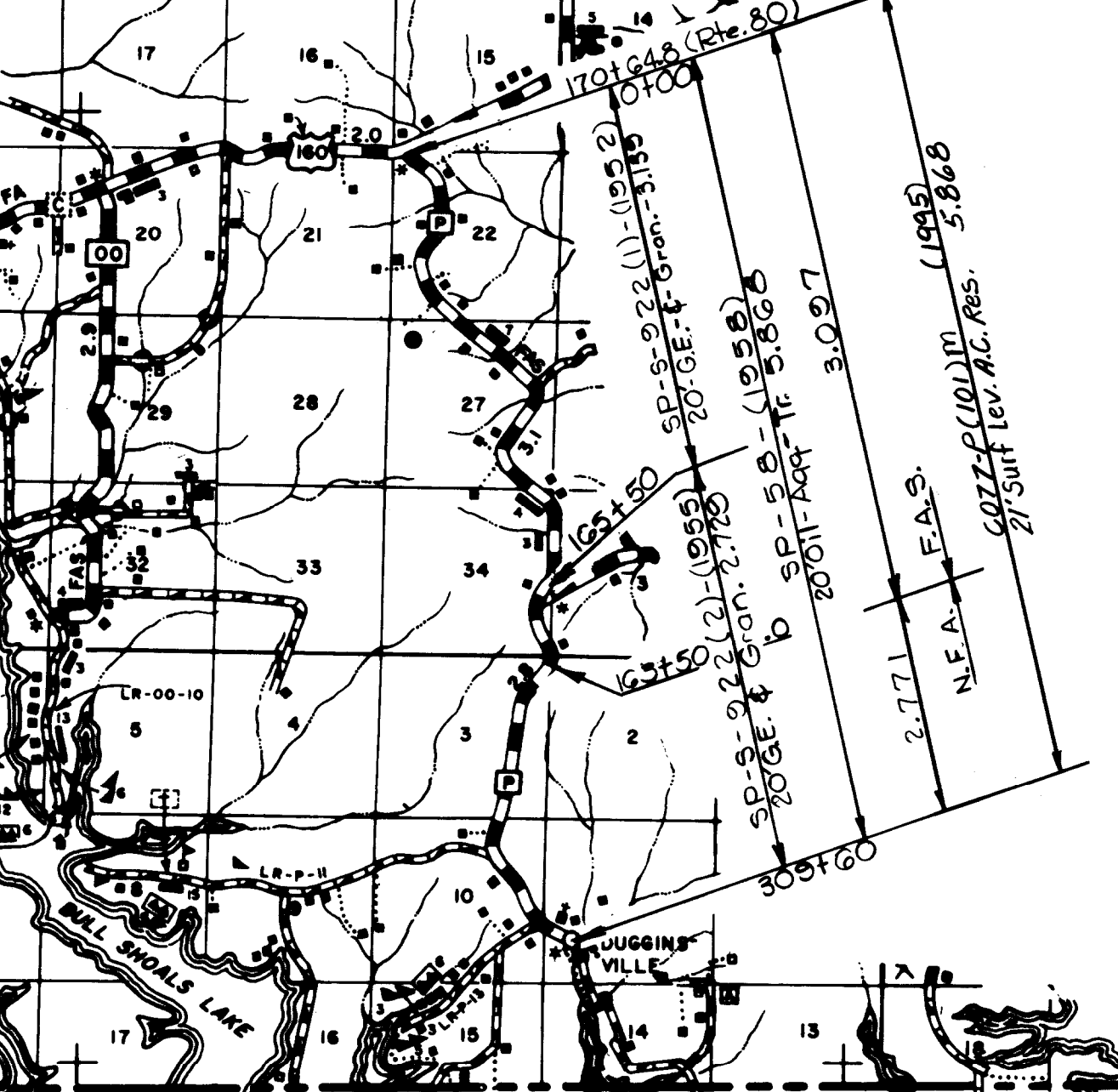
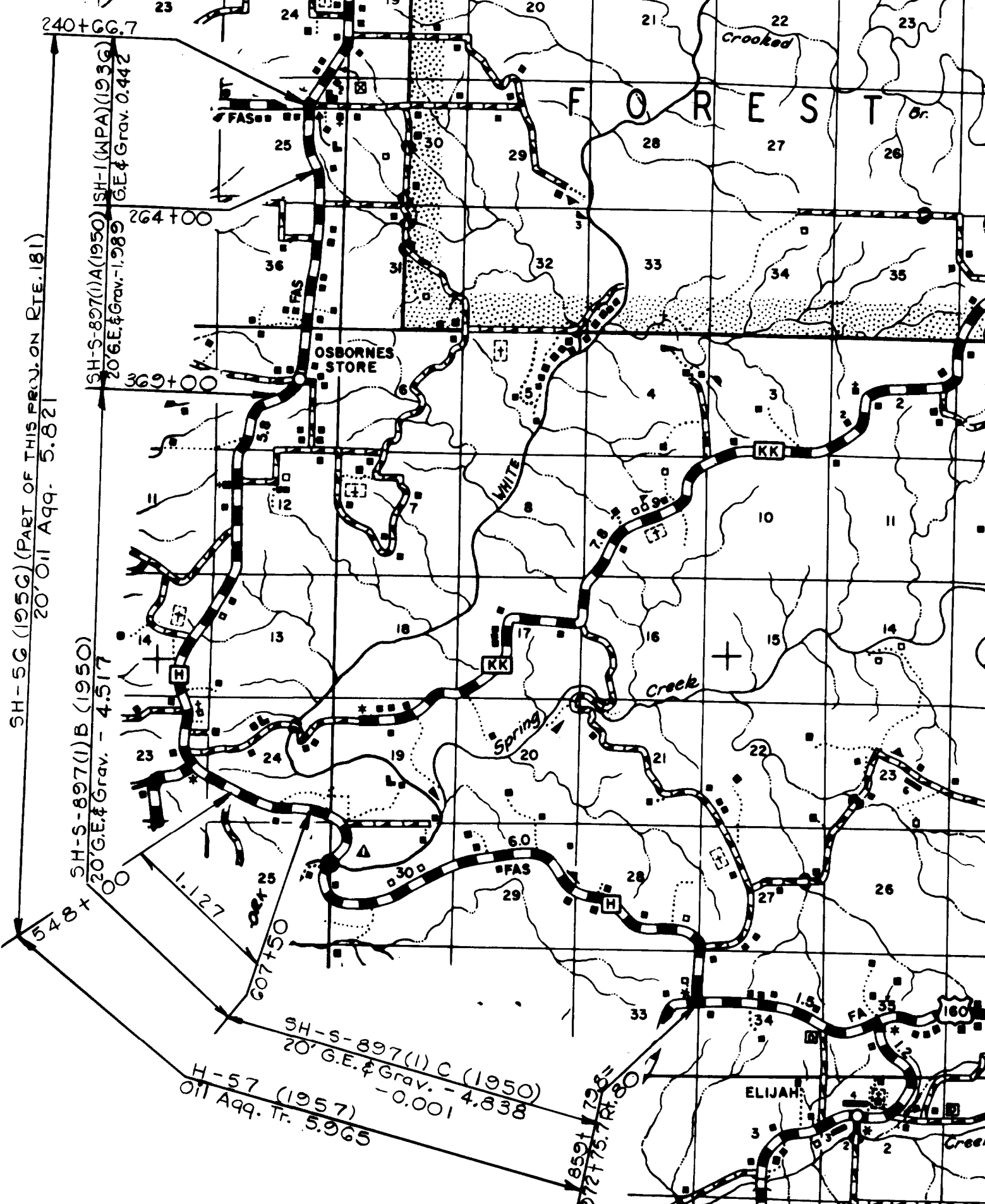
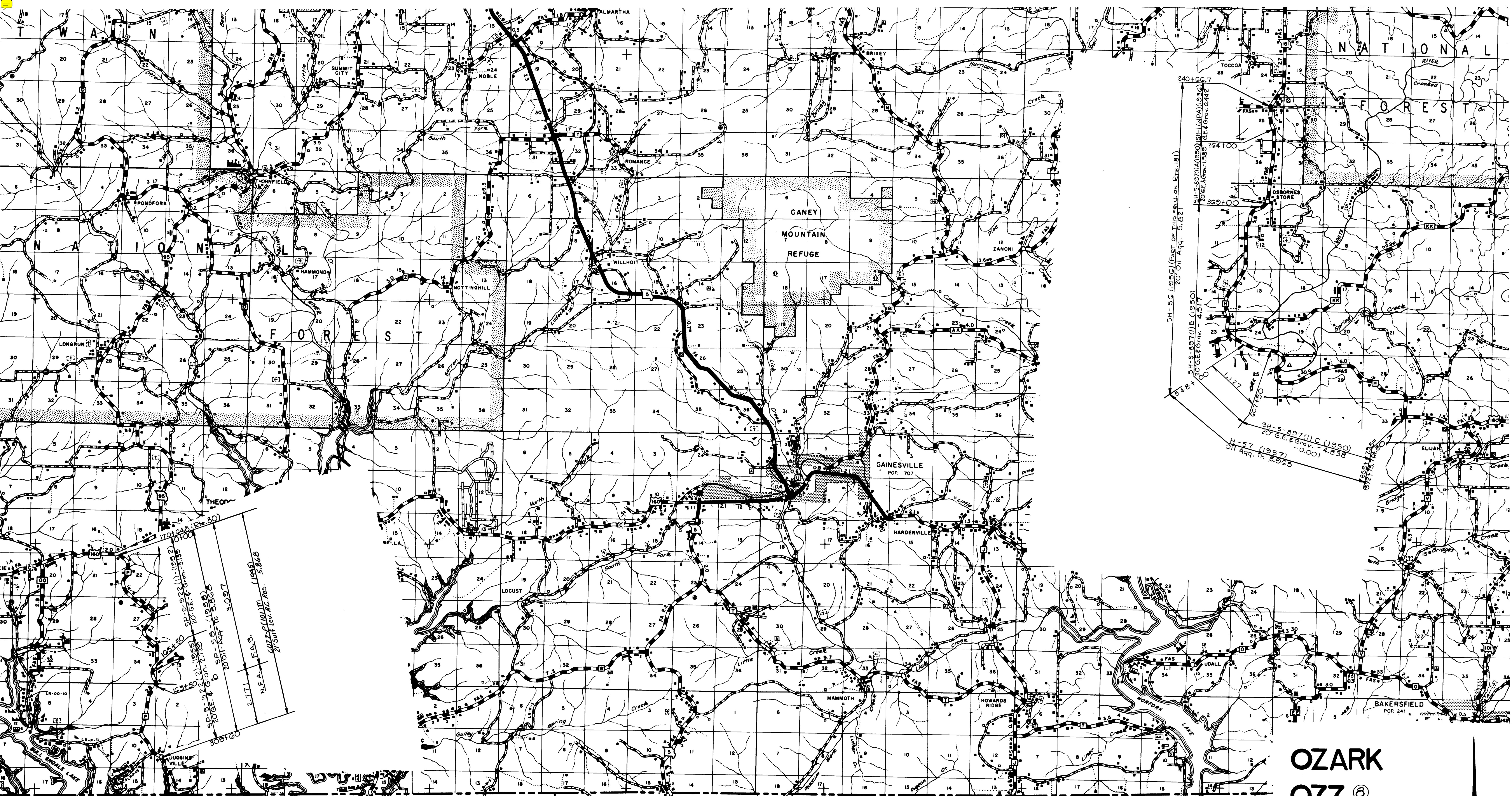




**OZARK  
077** <sup>®</sup>

ROUTES  
D  
V  
OO





MARION COUNTY

BAXTER COUNTY

COUNTY

ARKANSAS

**OZARK  
077** ©

ROUTE  
H-P

SHEET 9 OF 10



