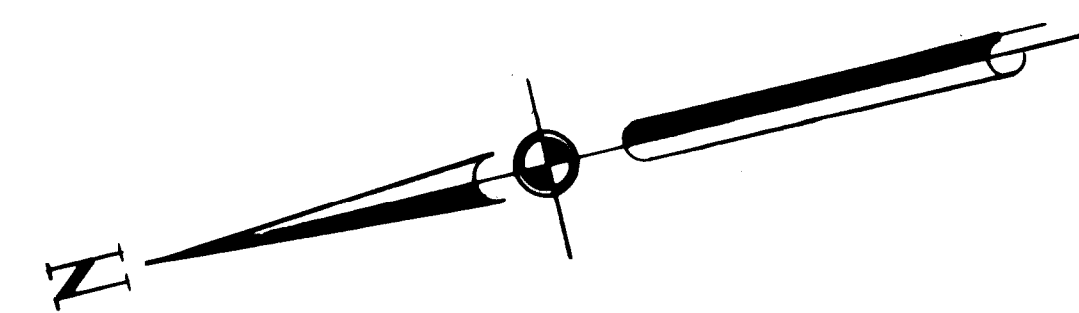




ROUTE - I-55

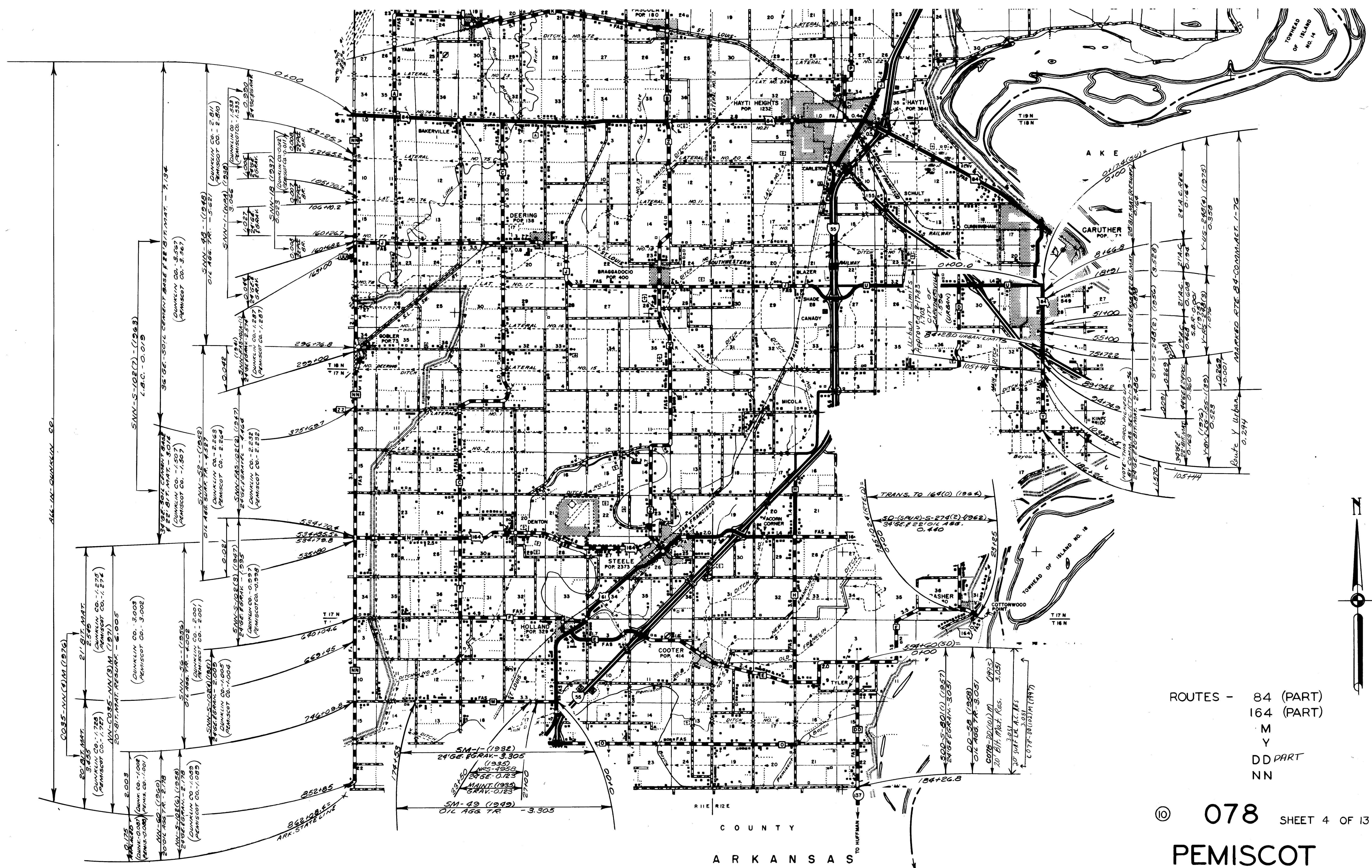
© 078 SHEET 1 OF 13

PEMISCOT

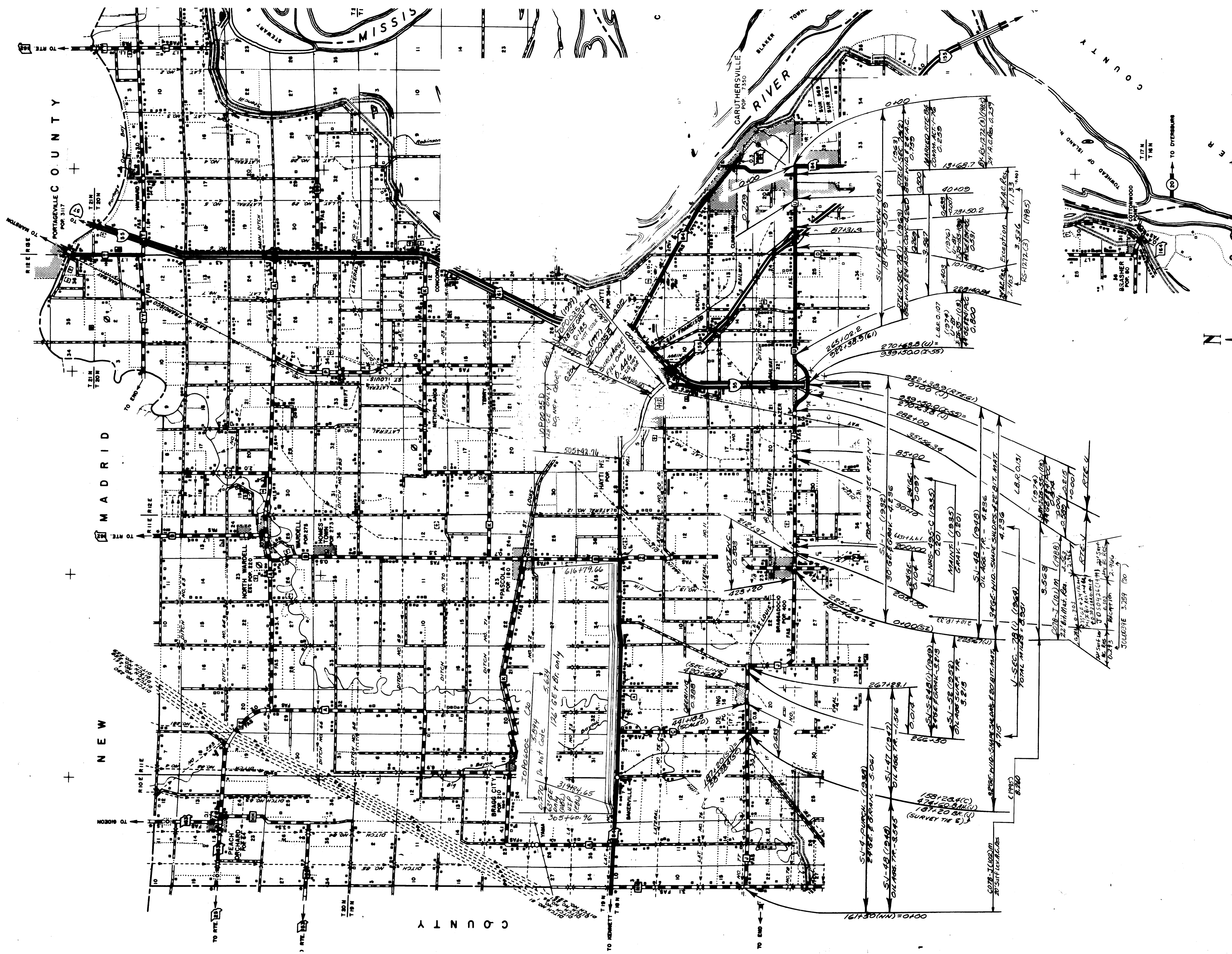








ROUTES - 84 (PART)  
 164 (PART)  
 M  
 Y  
 DD PART  
 NN

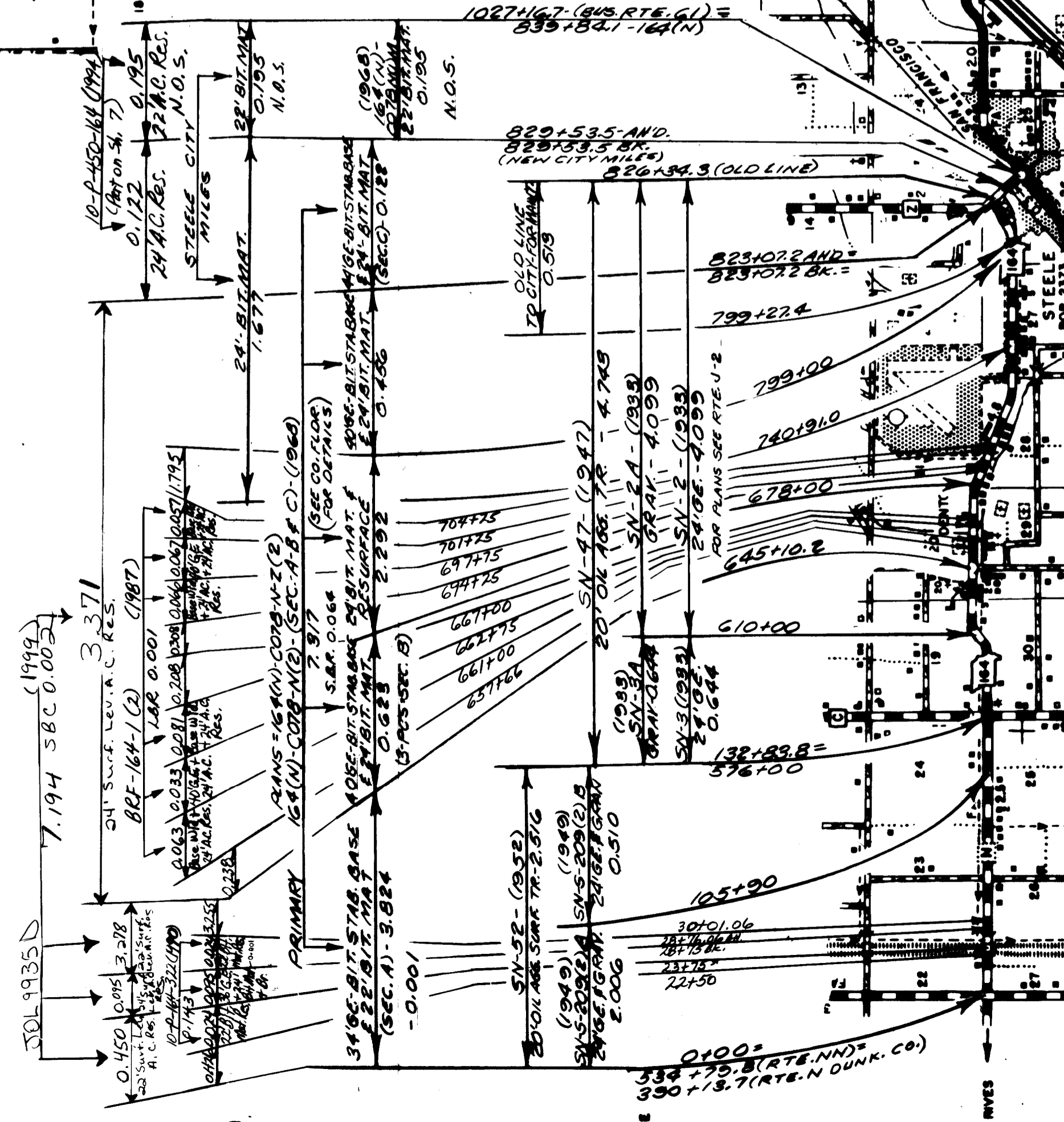
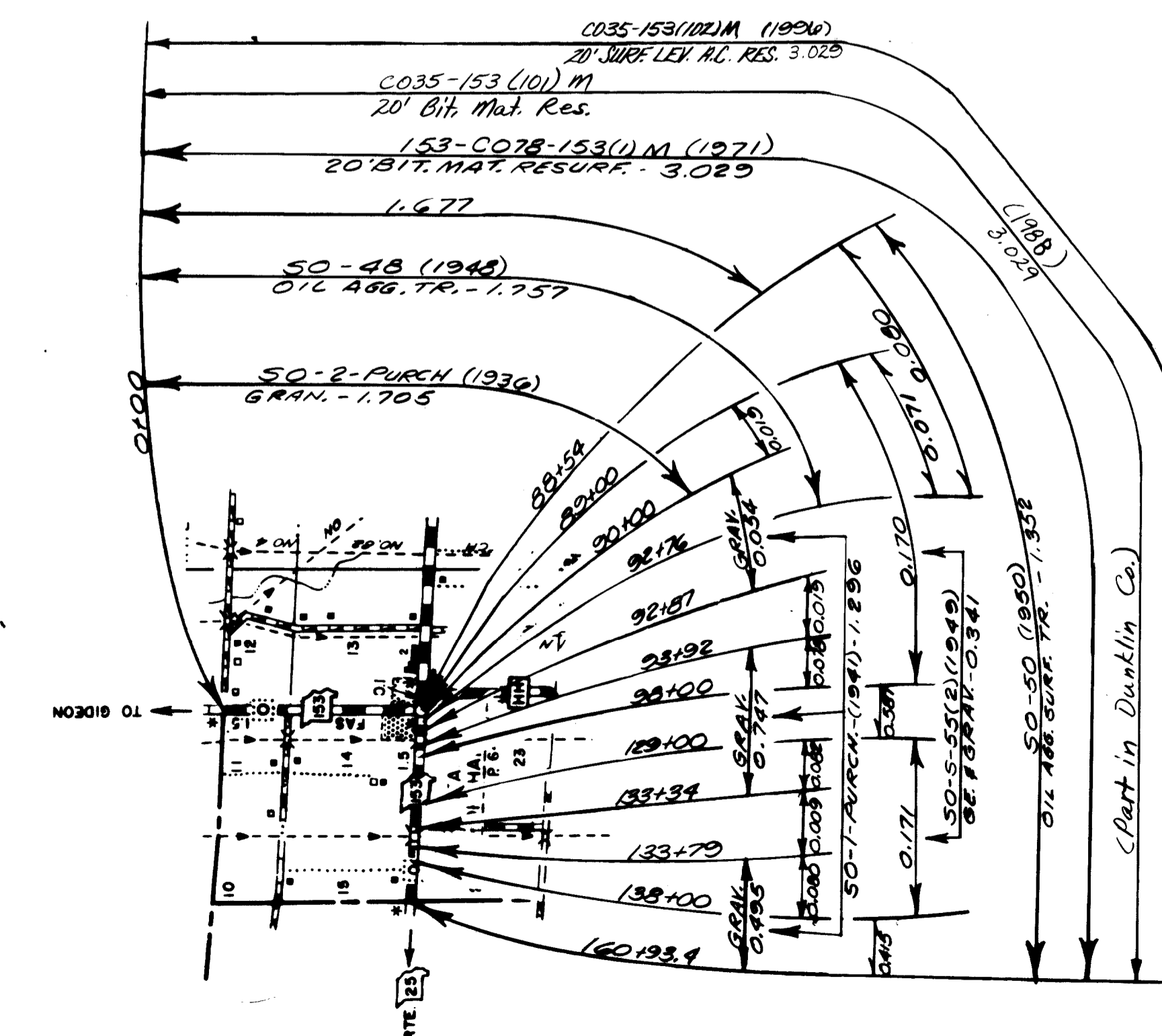
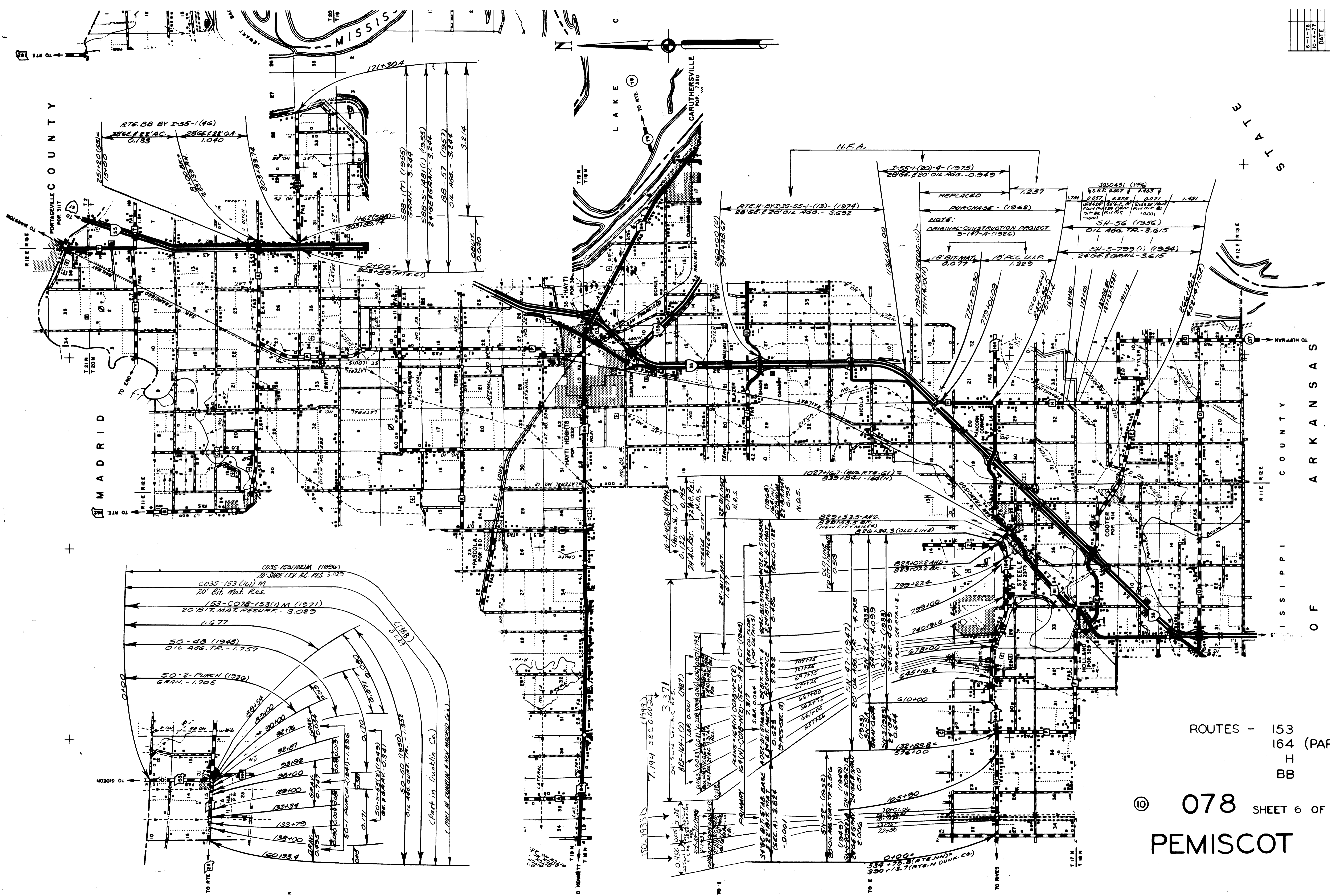


ROUTES - 84 (PART)  
 J (PART)  
 U  
 412 (PART)

© 078 SHEET 5 OF 13

PEMISCOT

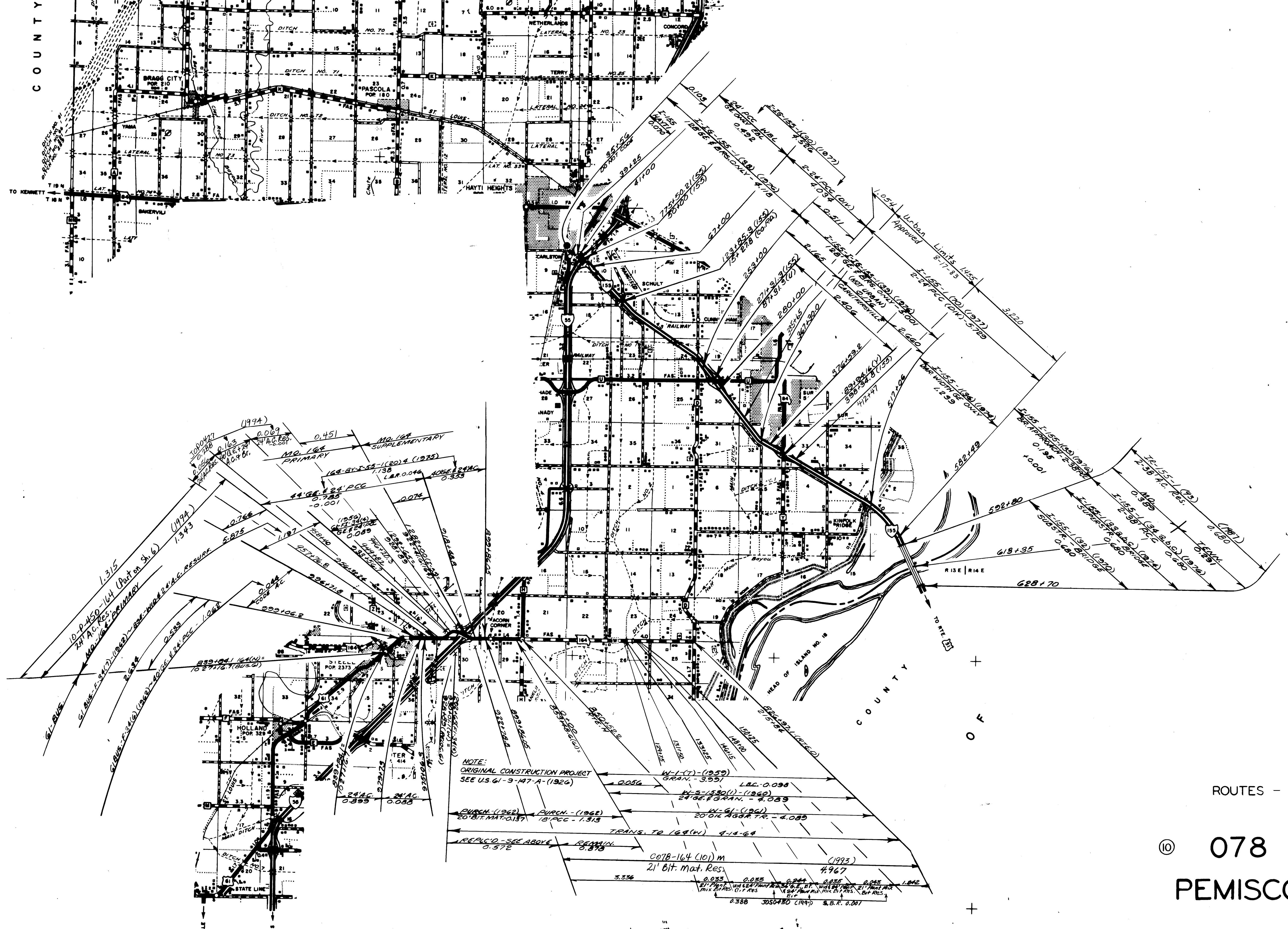
6-1-78	DATE
10-4-77	DATE



ROUTES - 153  
164 (PART)  
H  
BB

© 078 SHEET 6 OF 13  
PEMISCOT

COUNTY



NOTE:  
 ORIGINAL CONSTRUCTION PROJECT  
 SEE U.S. 61-9-147-A (1926)

PURCH. (1962) 20' BIT. MAT. 0.187  
 PURCH. (1962) 18' PCC - 1.313  
 TRANS. TO 164(W) 9-1-68  
 REPLCD - SEE ABOVE 0.572  
 REMAIN. 0.378  
 2078-164 (101) m  
 21' Bit. Mat. Res. 4.967  
 0.033  
 0.035  
 0.041  
 0.035  
 0.045  
 1.842  
 0.388 JOS0430 (1997) S.B.R. 0.207

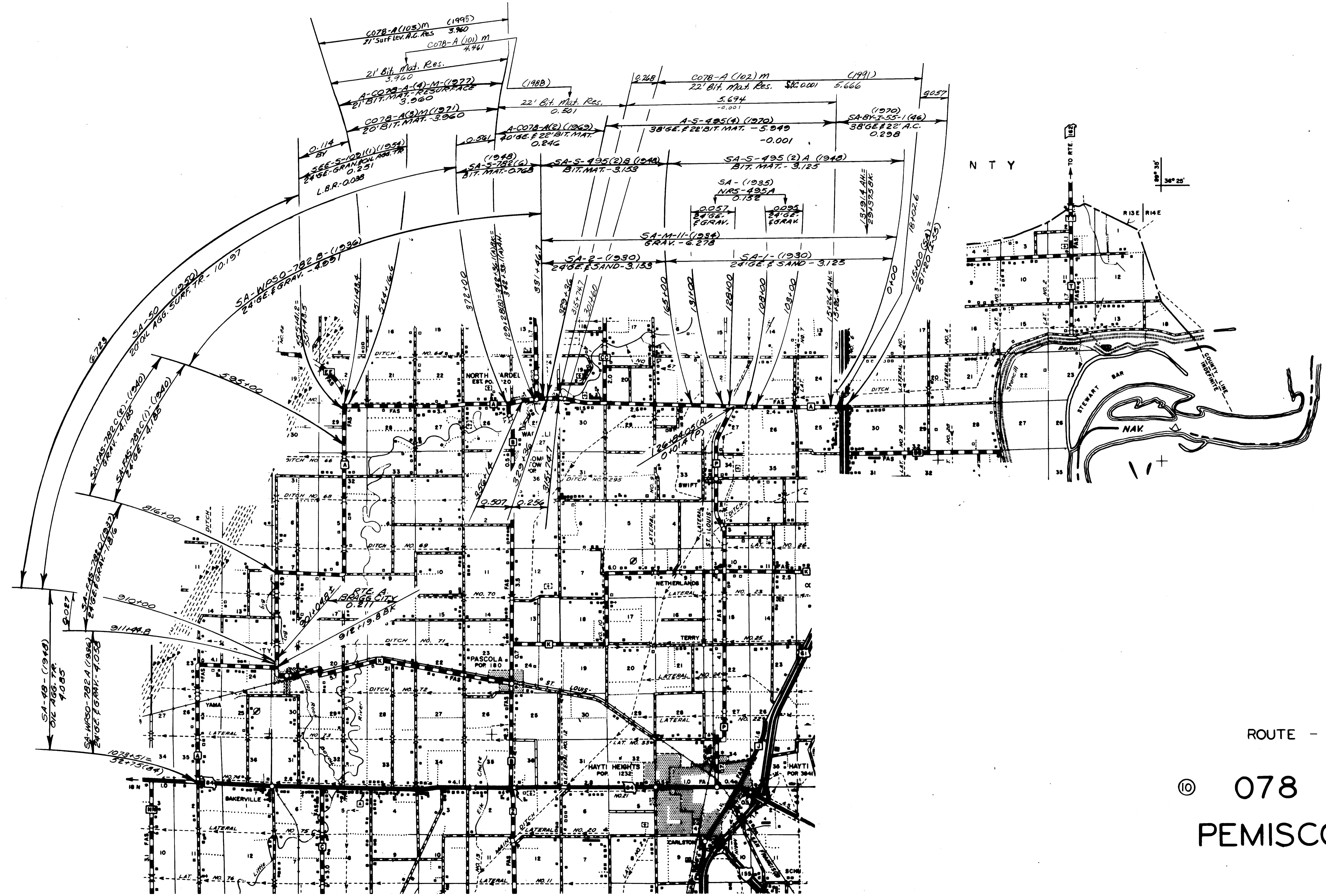
ROUTES - I-155  
 164 (PART)

⑩ 078 SHEET 7 OF 13

PEMISCOT





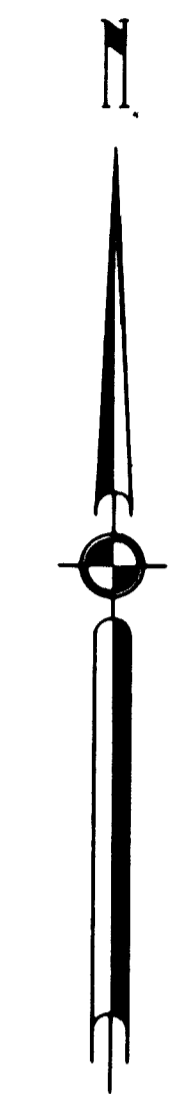
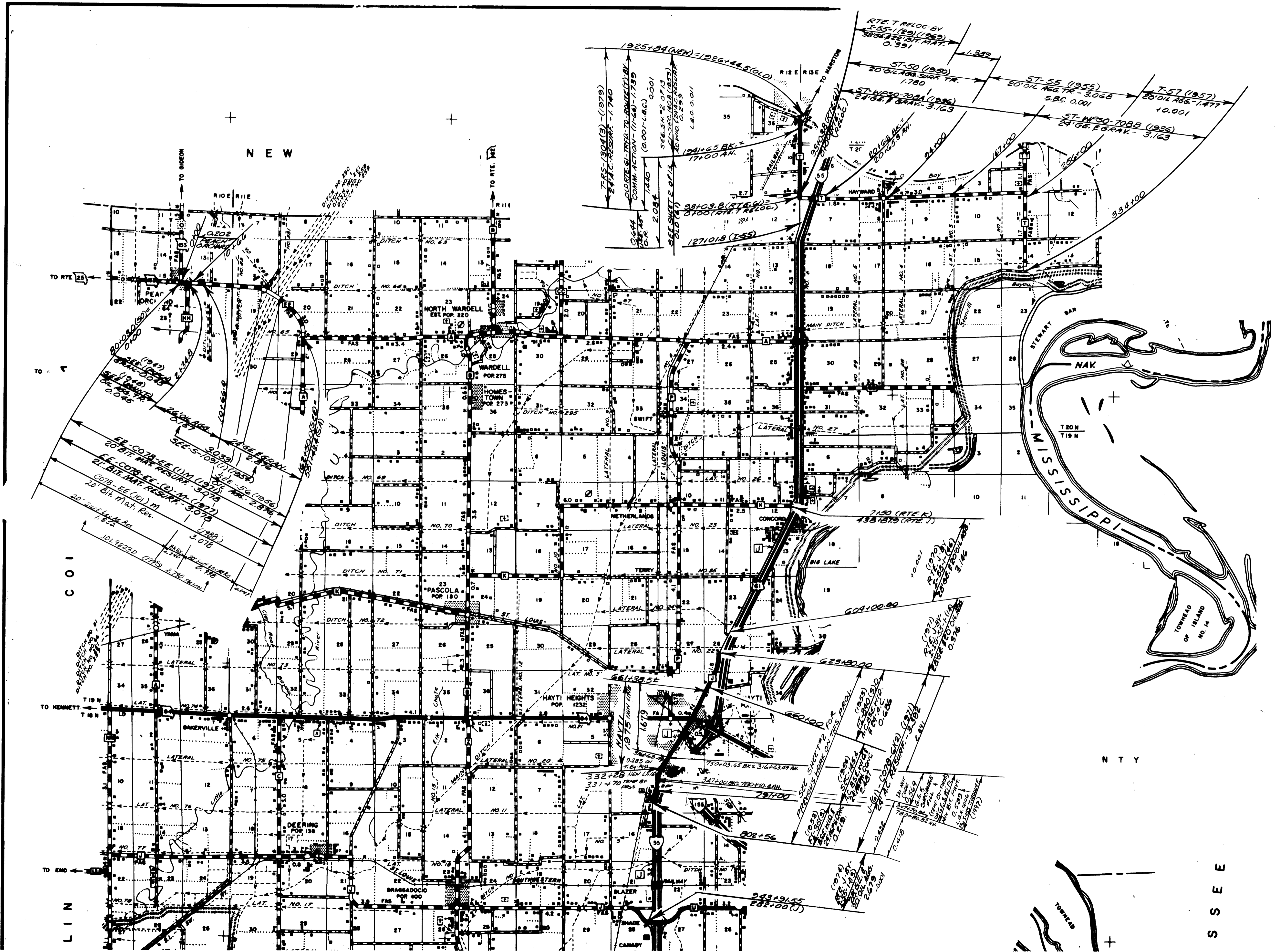


ROUTE - A

078 SHEET 9 OF 13

PEMISCOT





ROUTES - J (PART)  
T  
EE

© 078 SHEET II OF 13

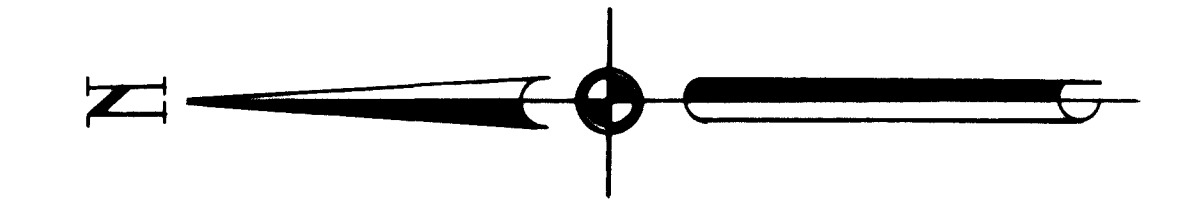
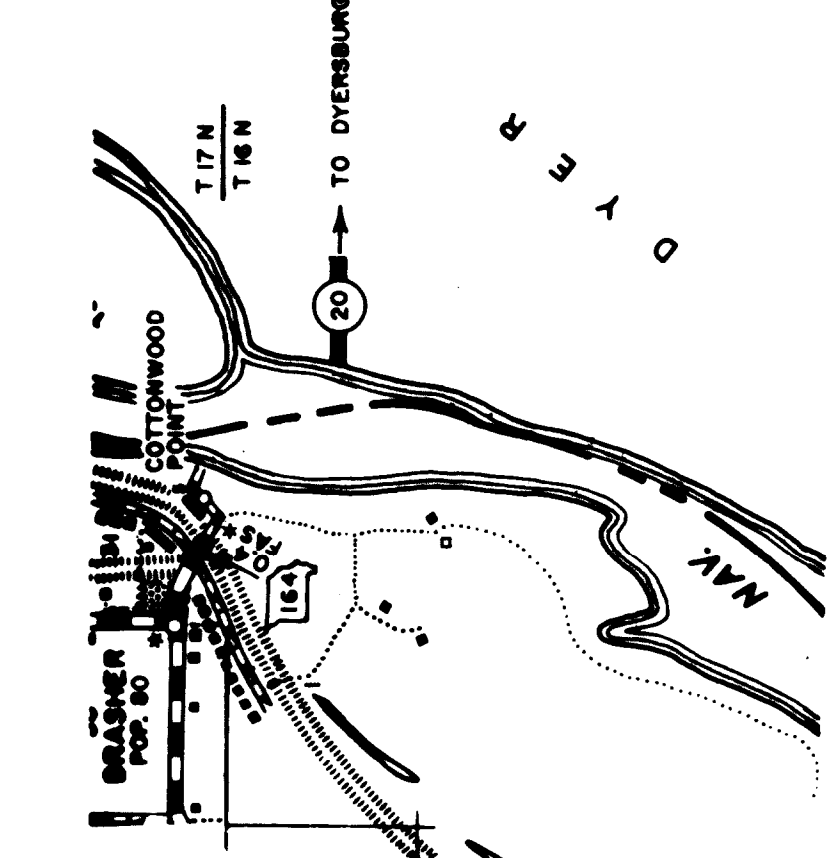
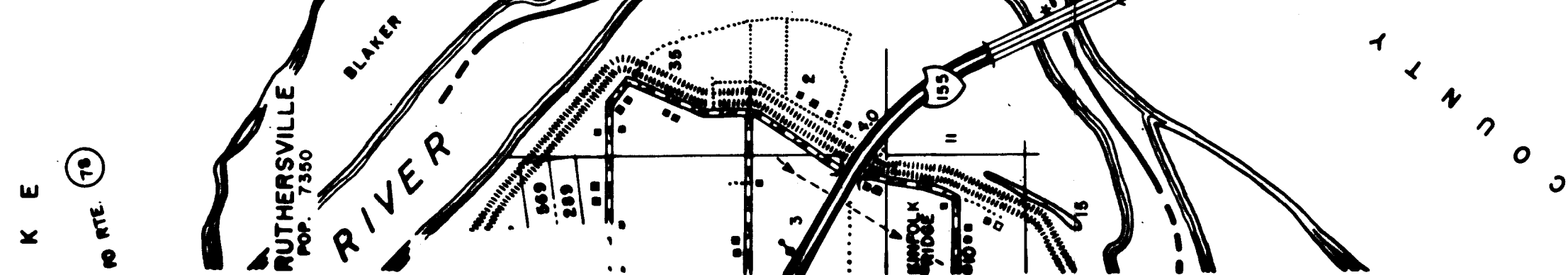
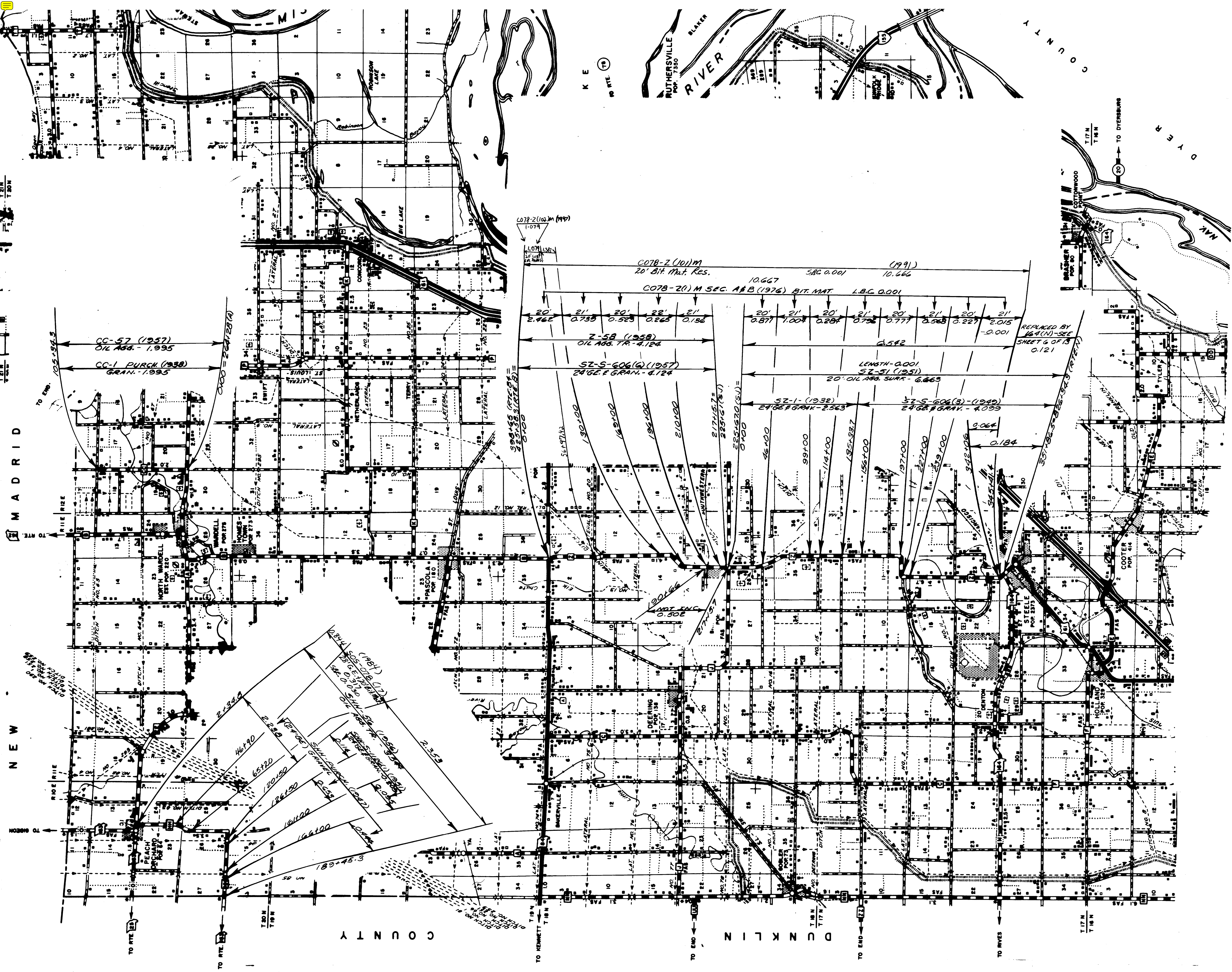
PEMISCOT

S S E E

L I N E

N T Y





ROUTES - Z  
CC  
HH

© 078 SHEET 13 OF 13

PEMISCOT