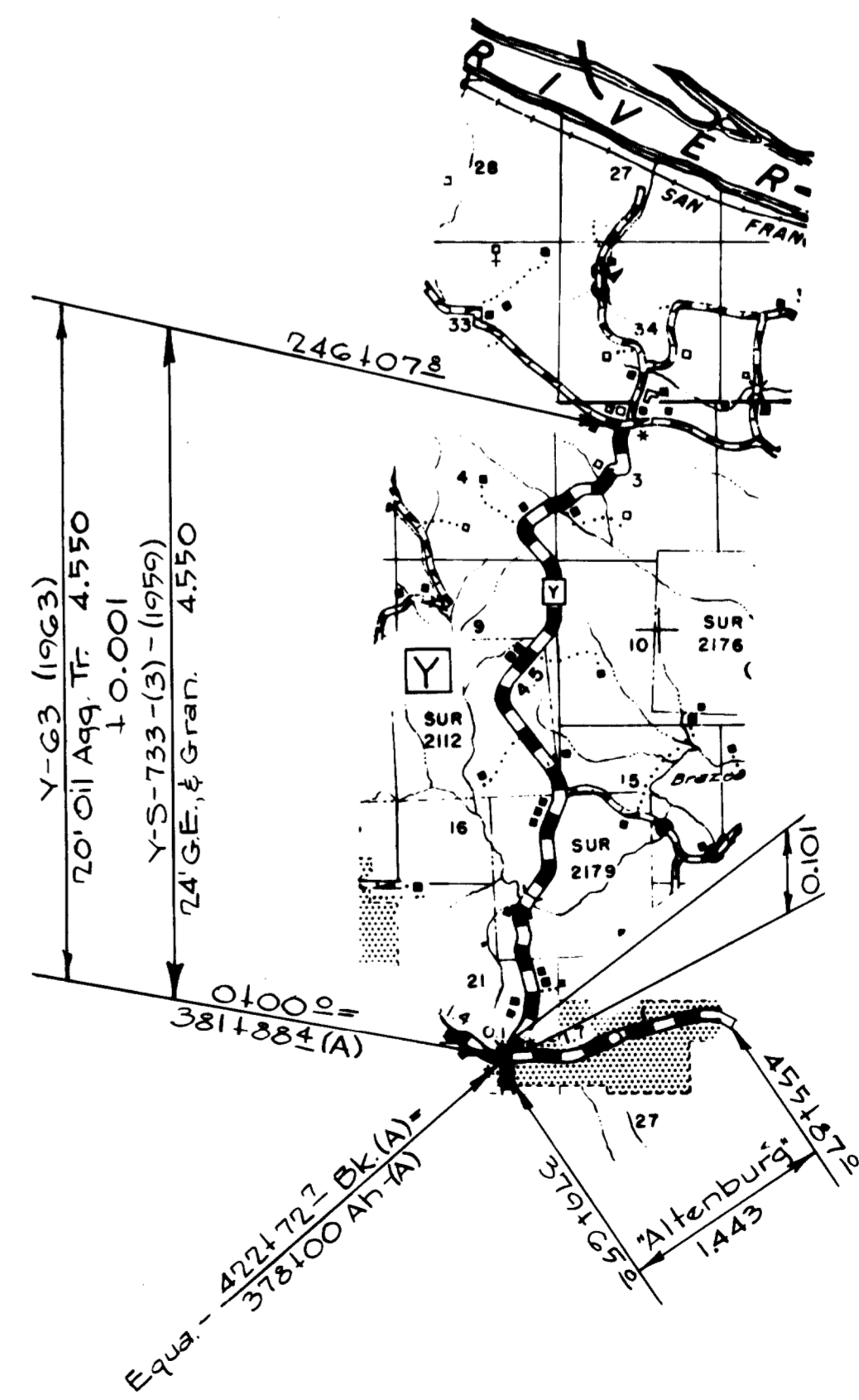
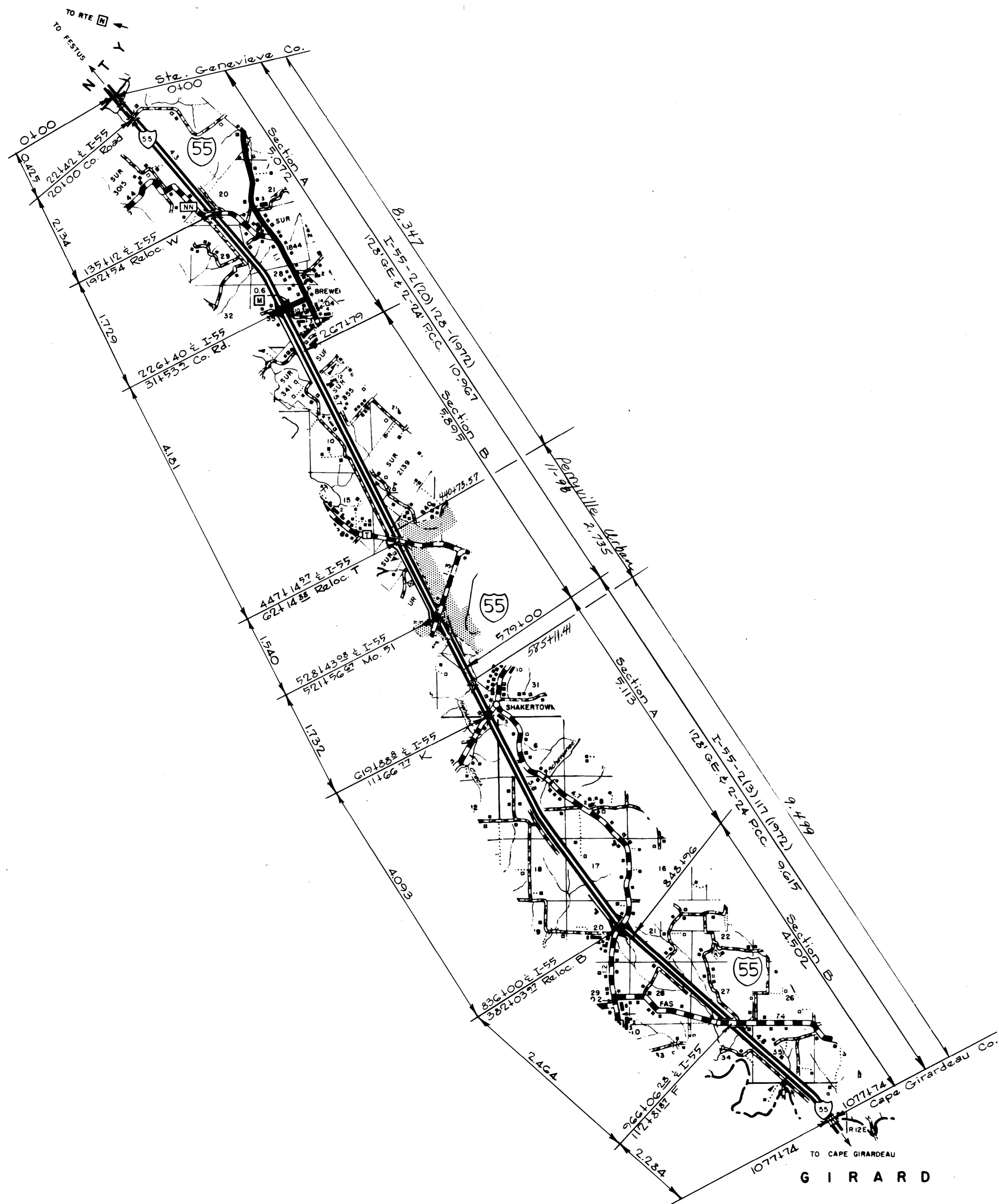


079
 PERRY
 10

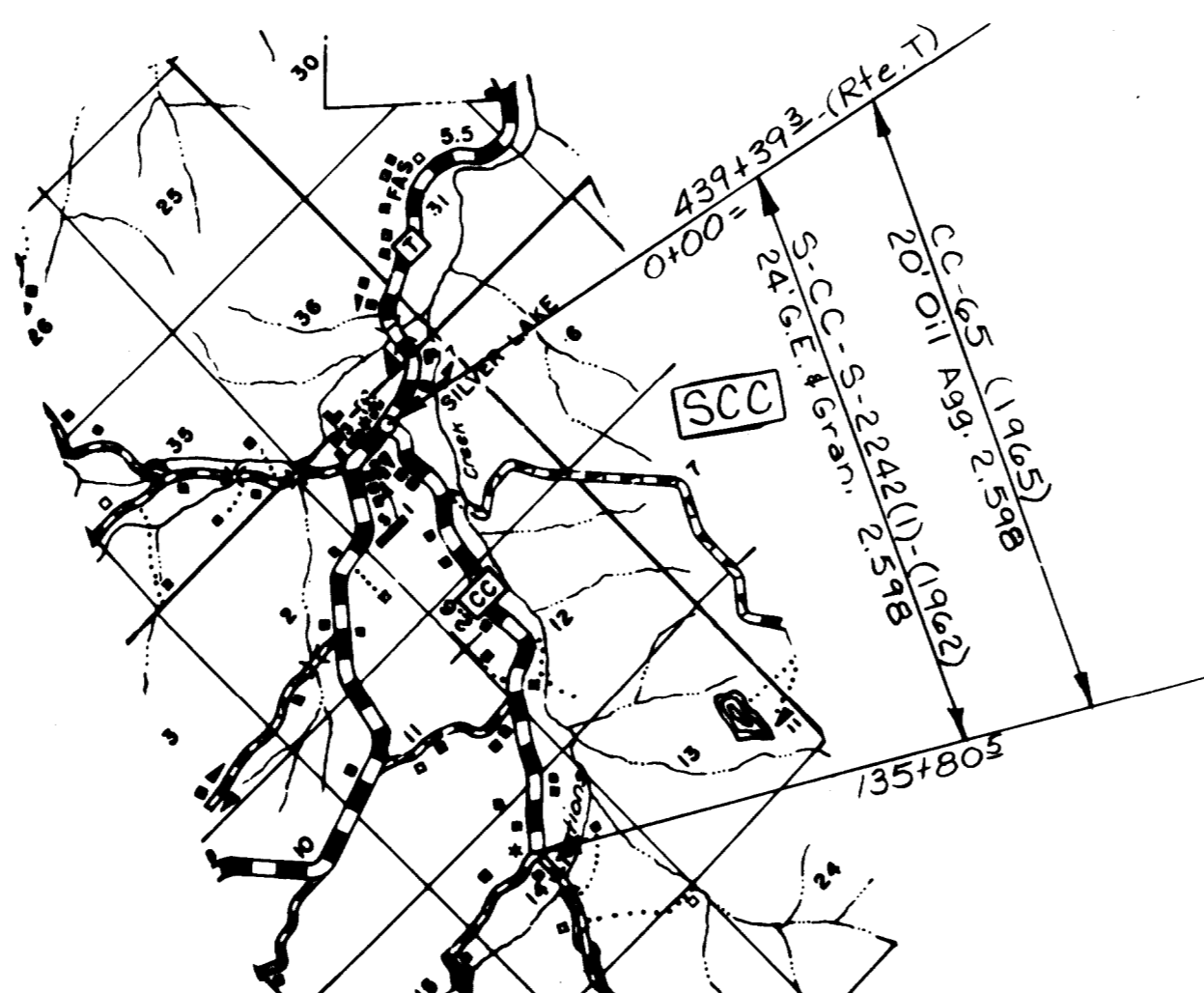
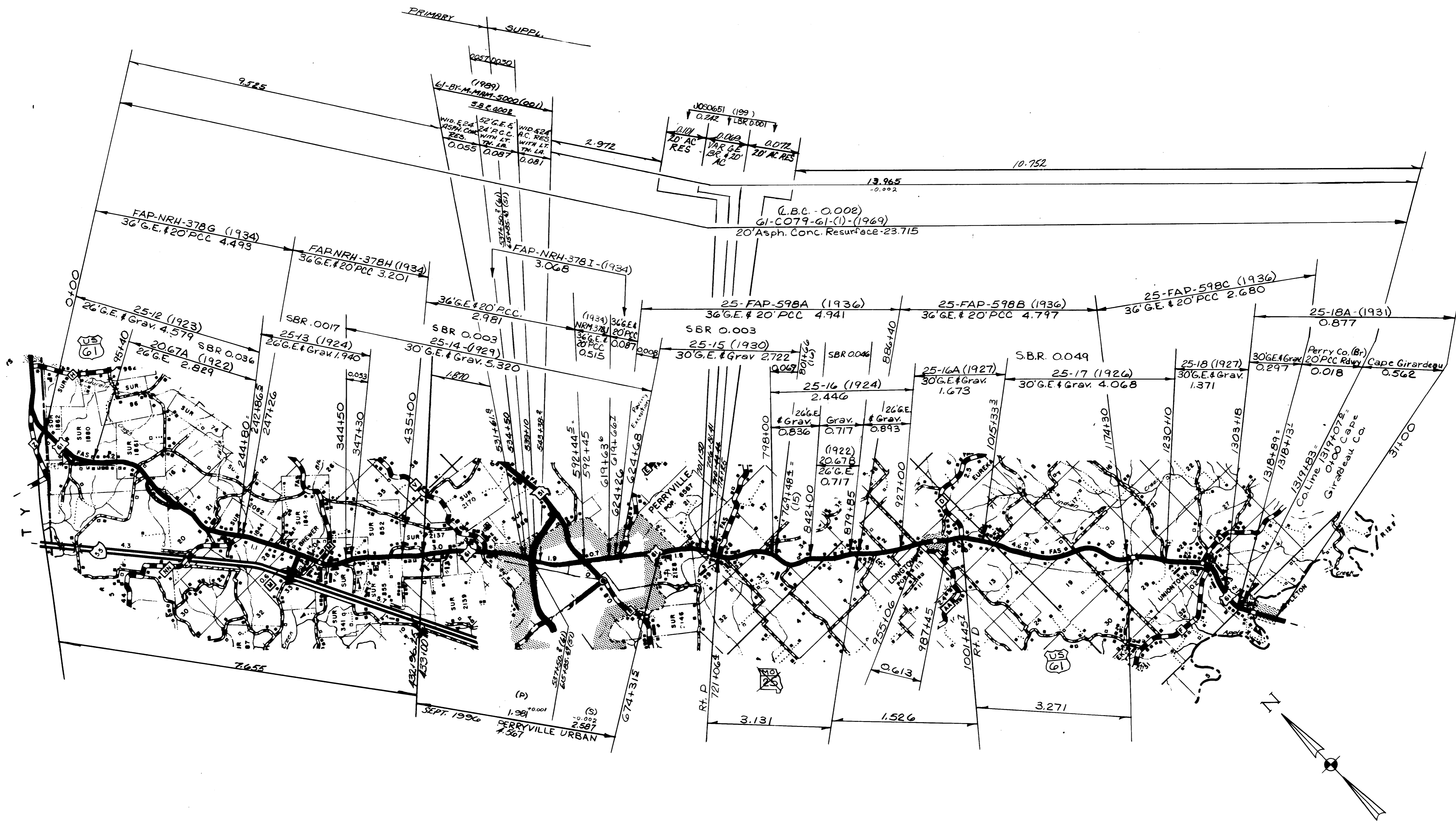
ROUTES: 51
 SHEET 1 OF 2



0.79
PERRY
⑩

ROUTES: I-55, Y

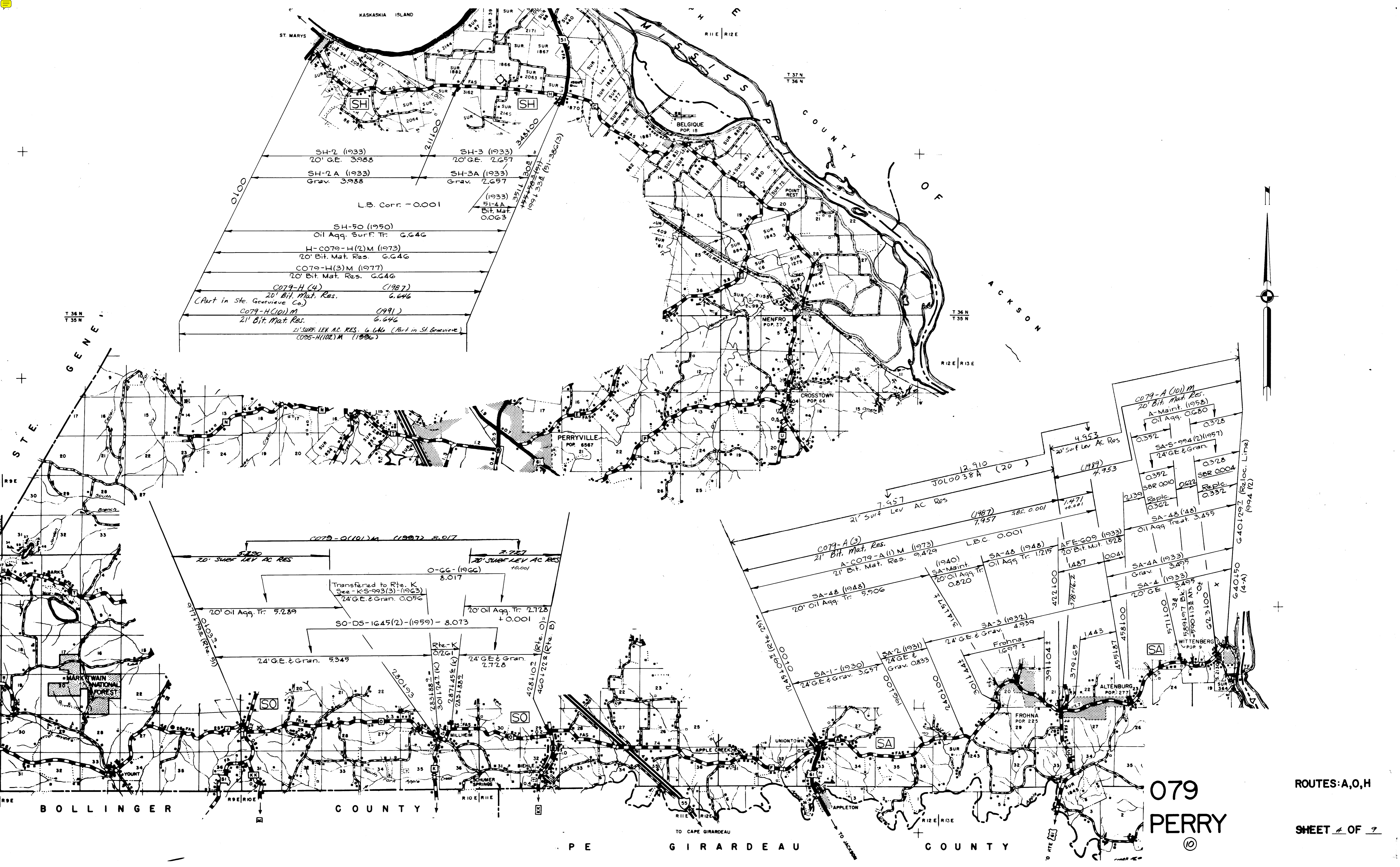
SHEET 2 OF 9



079
 PERRY
 10

ROUTES: 6J, CC

SHEET 3 OF 9



SH-2 (1933) 20' G.E. 3.988	SH-3 (1933) 20' G.E. 2.657
SH-2A (1933) Grav. 3.988	SH-3A (1933) Grav. 2.657
L.B. Corr. - 0.001	
SH-50 (1950) Oil Agg. Surf. Tr. 6.646	
H-C079-H(2)M (1973) 20' Bit. Mat. Res. 6.646	
C079-H(3)M (1977) 20' Bit. Mat. Res. 6.646	
C079-H(4) (1987) 20' Bit. Mat. Res. 6.646 (Part in Ste. Genevieve Co.)	
C079-H(10)M (1991) 21' Bit. Mat. Res. 6.646	
21' SURF. LEV. AC. RES. 6.646 (Part in Ste. Genevieve Co.) C095-H(102)M (1990)	

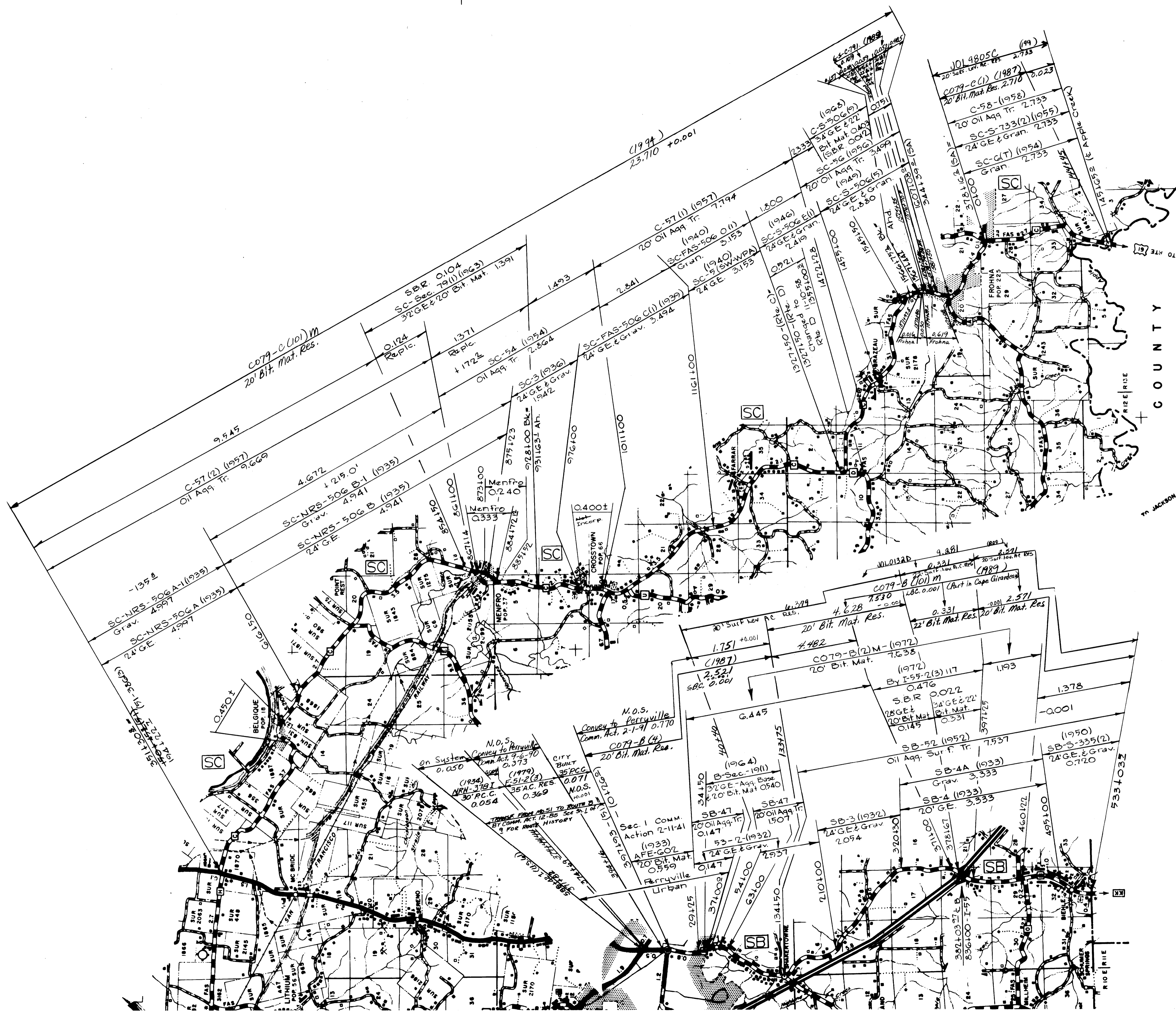
C079-O(10)M (1997) 8.917	2.227
20' SURF. LEV. AC. RES. 5.289	20' SURF. LEV. AC. RES. 10.001
Transferred to Rte. K See-KS-993(3)-(1963) 24' G.E. & Grav. 0.096	0-GG-(1966) 8.017
20' Oil Agg. Tr. 5.289	20' Oil Agg. Tr. 2.728
SO-DS-1645(2)-(1959) - 8.073	+ 0.001
24' G.E. & Grav. 5.345	24' G.E. & Grav. 2.728

12.910	JOL0038A (20)	4.953	20' Surf Lev AC Res	4.953
7.957	21' Surf Lev AC Res	1.471	+0.001	
7.957	(1987) SBC. 0.001	2.139		
0.352	SBR 000	0.622	Replc.	0.332
0.328	SBR 0004			
0.328	SA-5-994(2)(1957) 24' G.E. & Grav.			
3.455	SA-48 (48) Oil Agg. Treat.			
1.487	AFE-609 (1933) 20' Bit. Mat. 1928	0.041		
3.495	SA-4A (1933) Grav.			
3.495	SA-4 (1933) 20' G.E.			
0.04	WITTENBERG POP 9			
0.04	SA-2 (1931) 24' G.E. & Grav. 0.833			
4.939	SA-3 (1932) Frohna 1697 ±			
1.443	379165			
4.939	455187			
4.939	478100			
3.9104	391104			
3.9104	379165			
4.939	455187			
4.939	478100			
4.939	455187			
4.939	478100			
4.939	455187			
4.939	478100			

079
PERRY

ROUTES: A, O, H

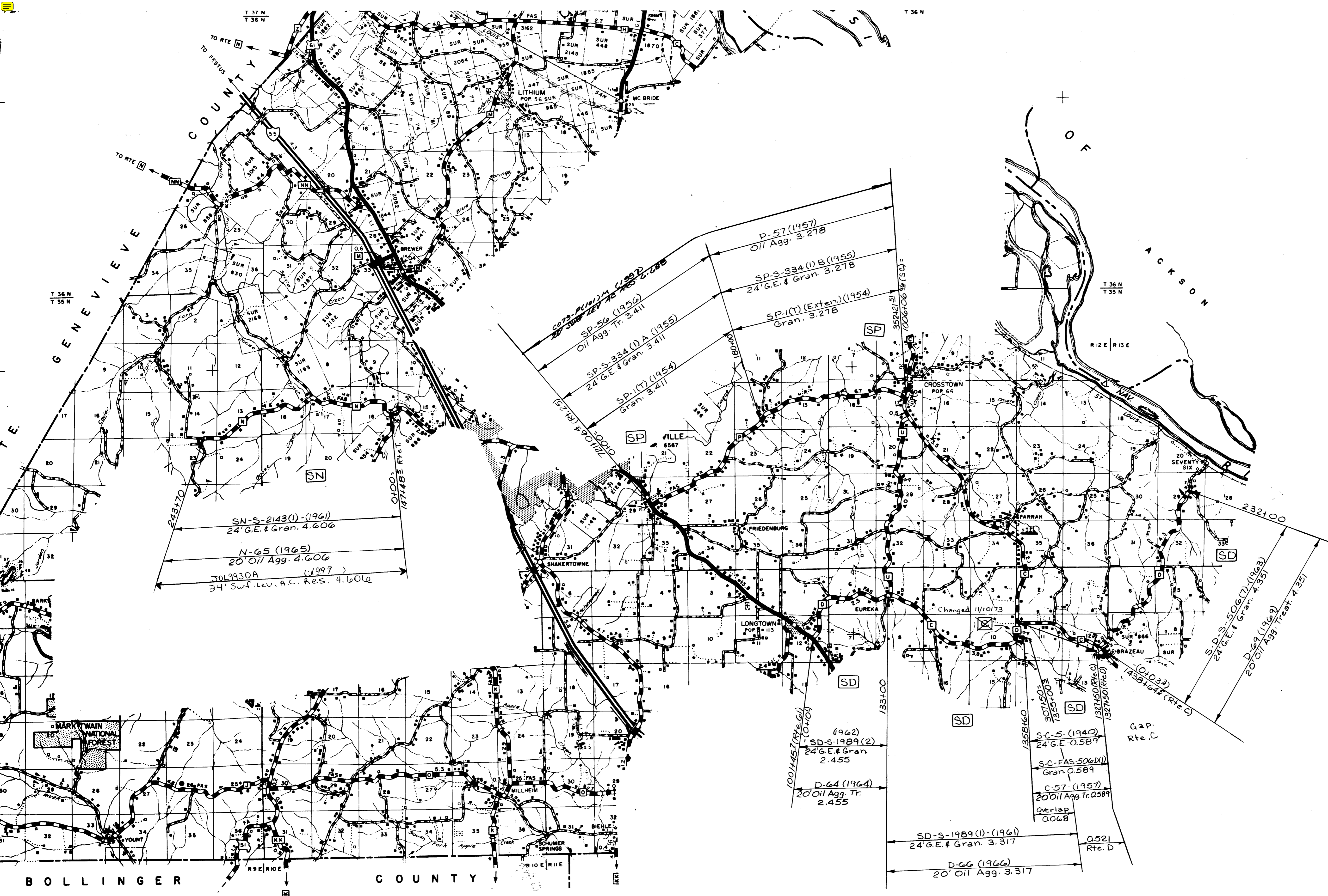
SHEET # OF 7



079
PERRY
©

ROUTES: C, B

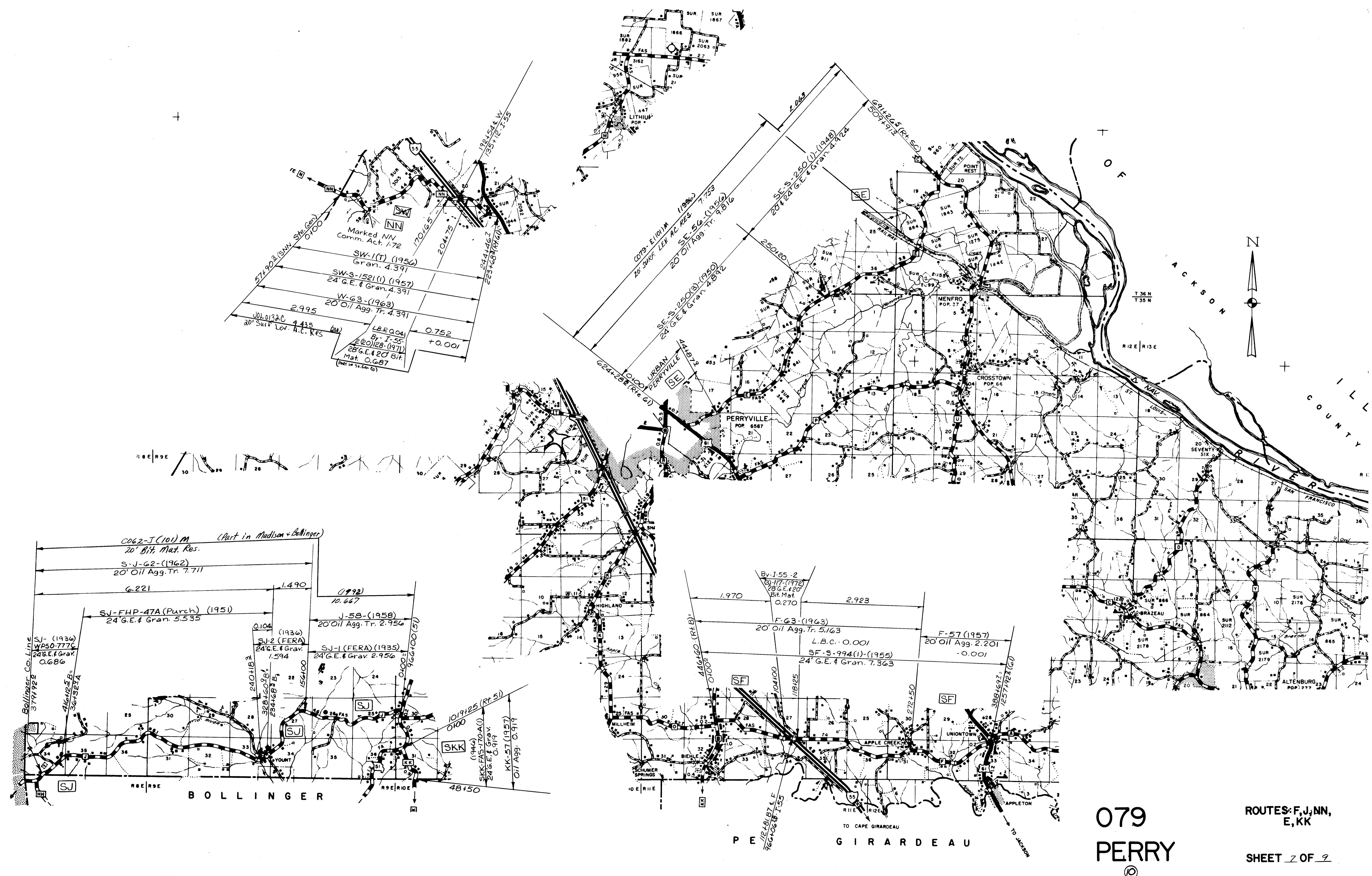
SHEET 5 OF 9



079
PERRY
©

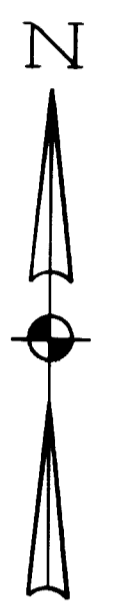
ROUTES: D, P, N.

SHEET 6 OF 9



+

+



R 8 E | R 9 E

T 36 N
T 35 N

JACKSON
COUNTY

0062-J(101)M (Part in Madison & Bollinger)
20' Bit. Mat. Res.
S-J-62-(1962)
20' Oil Agg. Tr. 7.711

6.221 1.490
SJ-FHP-47A (Purch) (1951)
24' G.E. & Gran. 5.535

(1992)
10.667
J-58-(1958)
20' Oil Agg. Tr. 2.956

Bollinger Co. Line
SJ-(1936)
WPSO-777C
24' G.E. & Grav.
0.686

0.104 (1936)
SJ-2 (FERA)
24' G.E. & Grav.
1.594

2404B3
32B1603g
234468 B1
156400

SJ-1 (FERA) (1935)
24' G.E. & Grav. 2.956

0400-1
966400 (57)

1019125 (RT 5)
0100

(1946)
SKK-EAS-170-A(1)
24' G.E. & Grav.
0.919

KK-57 (1957)
017 Agg. 0.919

By I-55-2
(B) 117-(1970)
28' G.E. & 20'
Bit. Mat.
0.270

1.970 2.923
F-63-(1963)
20' Oil Agg. Tr. 5.163

L.B.C. - 0.001
SF-S-994(1)-(1955)
24' G.E. & Gran. 7.363

F-57 (1957)
20' Oil Agg. 2.201
-0.001

3881621
2571923 (G)

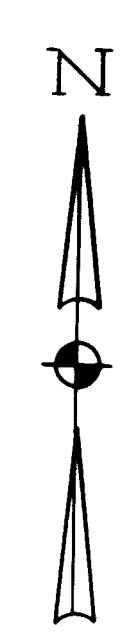
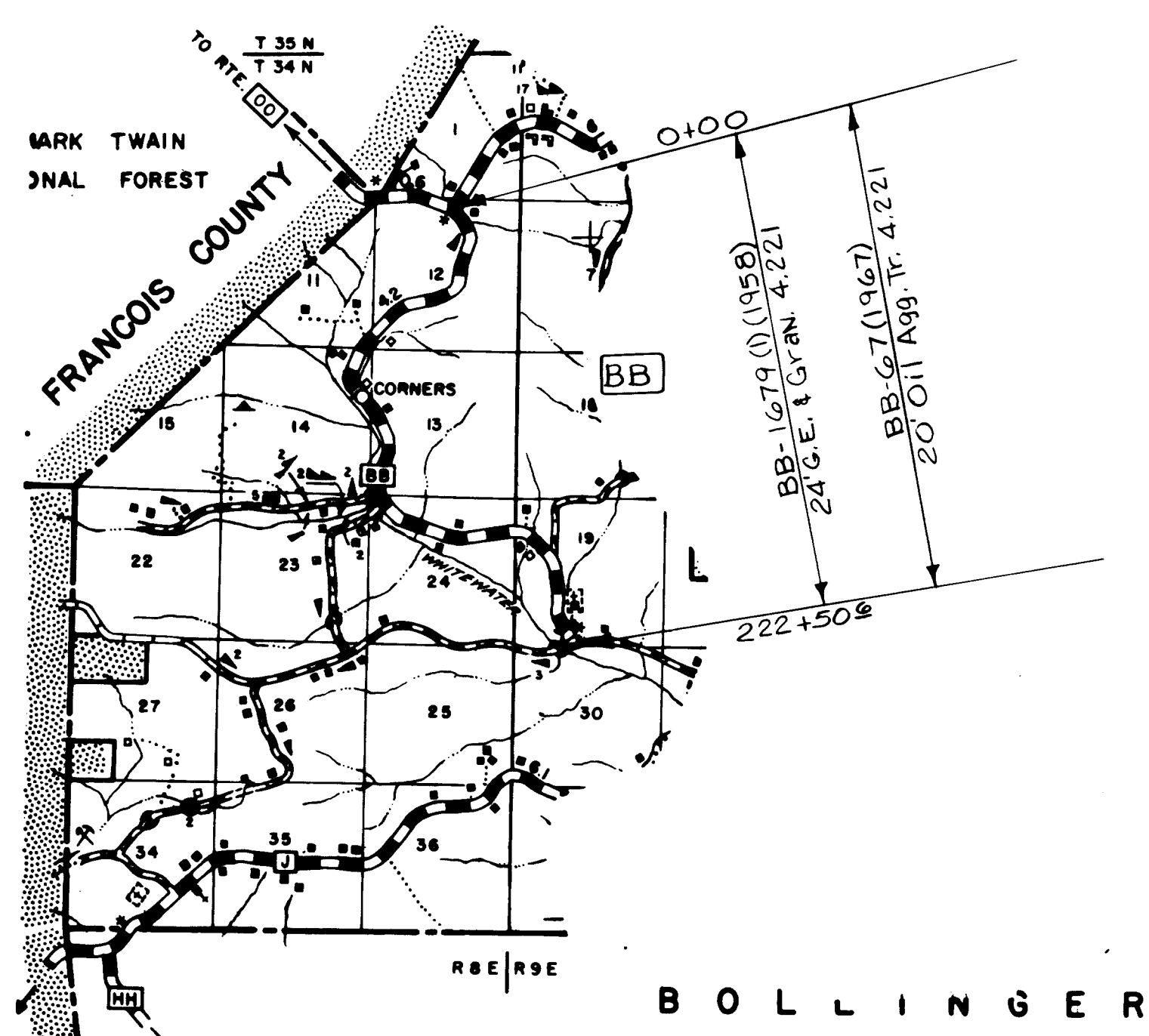
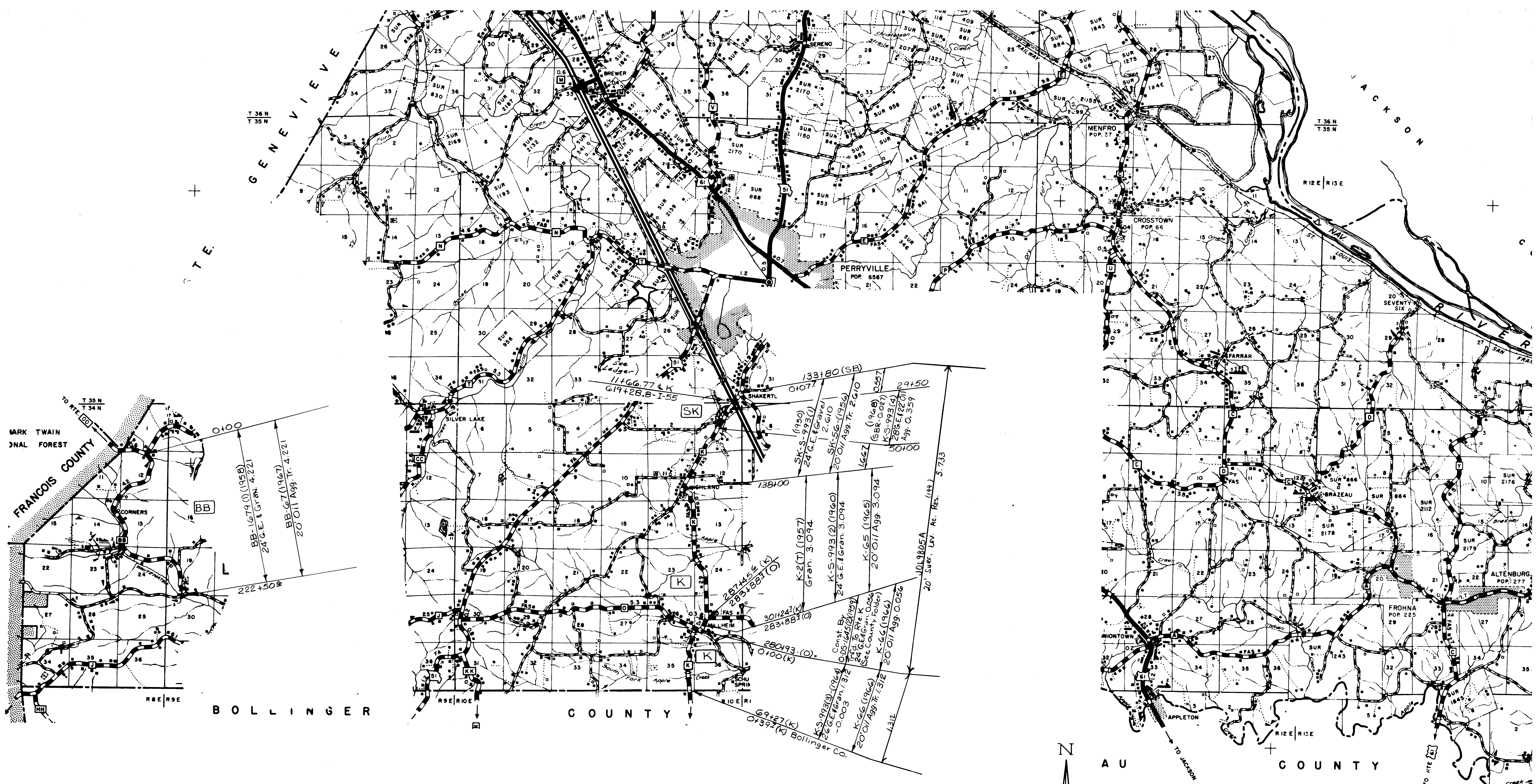
BOLLINGER

TO CAPE GIRARDEAU
PERRY
GIRARDEAU

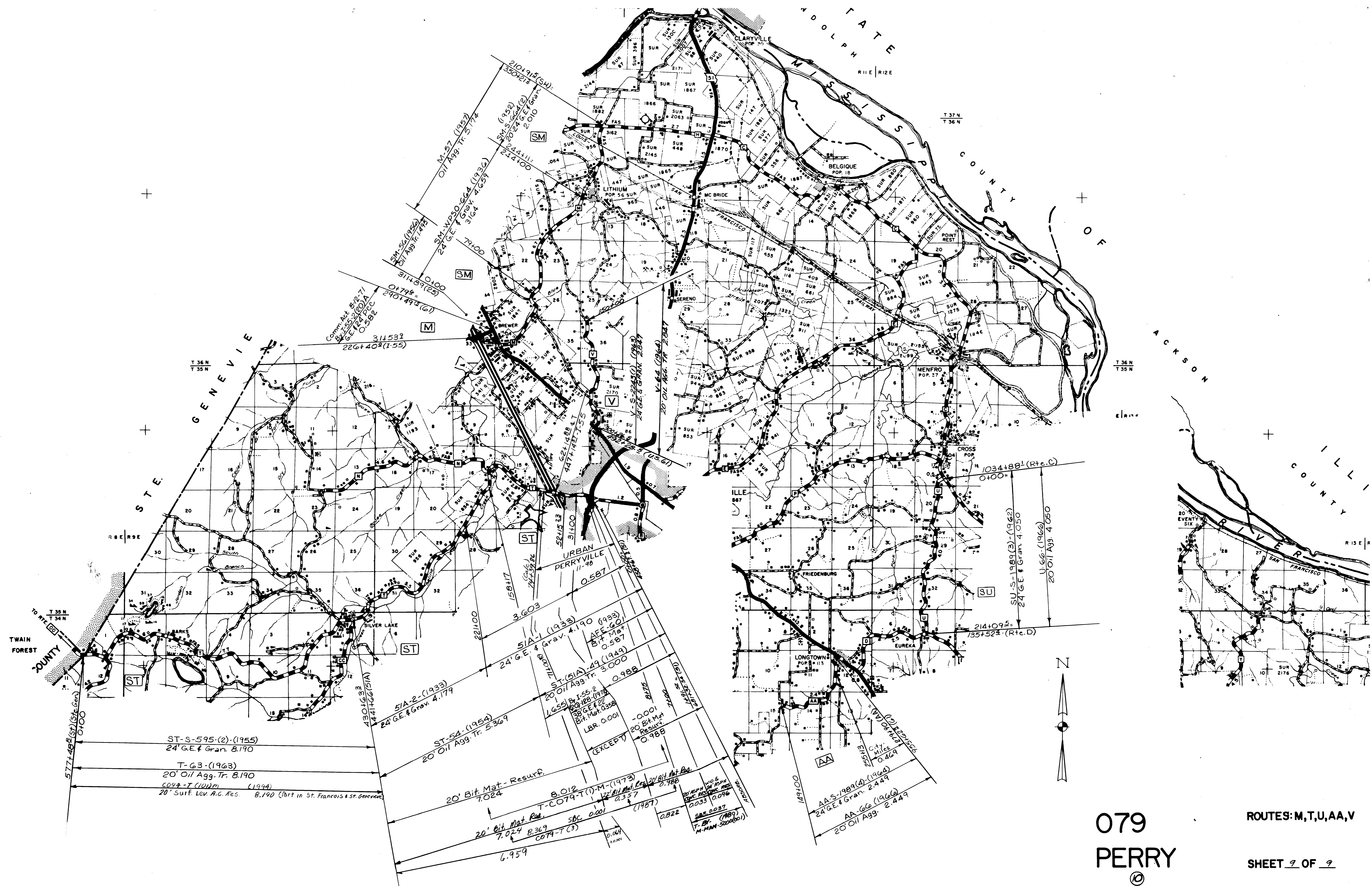
079
PERRY

ROUTES: F, J, NN,
E, KK

SHEET 2 OF 9



079
 PERRY
 ROUTES: K; BB
 SHEET 8 OF 9



079
PERRY

ROUTES: M, T, U, AA, V

SHEET 9 OF 9