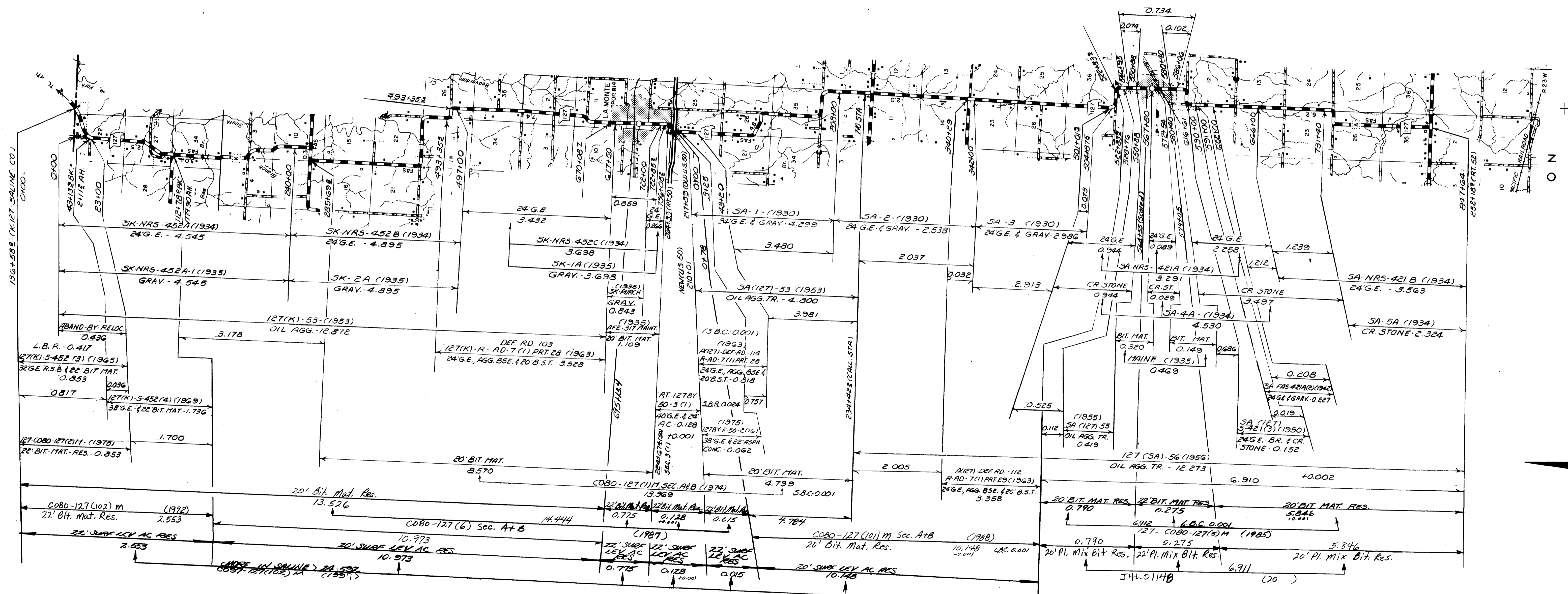
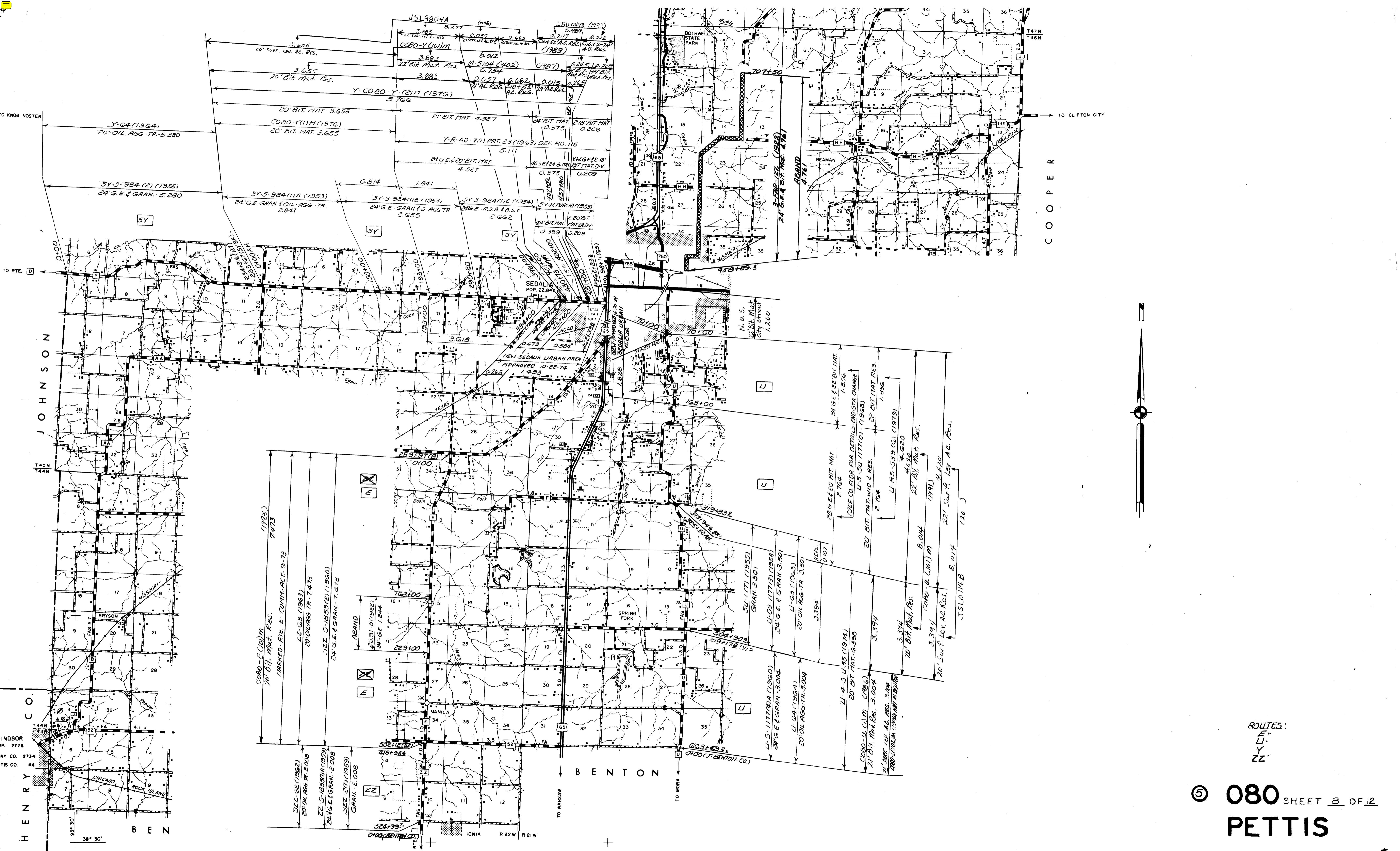


NOTE: X-RD. E.S.R. CONN TO OLD LINE BLT. @ STA 51102

(SEE CO. FOLDER)
 BY 50 SEC. 80 (3) (1965)
 34' G.E. 422' AC. (1978)
 CO 80 80S (11M) (1978)
 22' BIT. MAT. RES. (PART)
 22' BIT. MAT. RES. (PART)
 Marked Rte From Dist. 5-90 (1991)
 By Phone Call From Dist. 5-90 (1991)
 By 080-50SP (211M) (1991)
 27' Bit. Mat. Res. (1991)
 22' 5/8" Bit. Mat. Res. (1991)
 22' 5/8" Bit. Mat. Res. (1991)



ROUTES:
127(A-K)



TO KNOB NOSTER

TO RTE. D

JOHNSON

T45N
T44N

HENRY

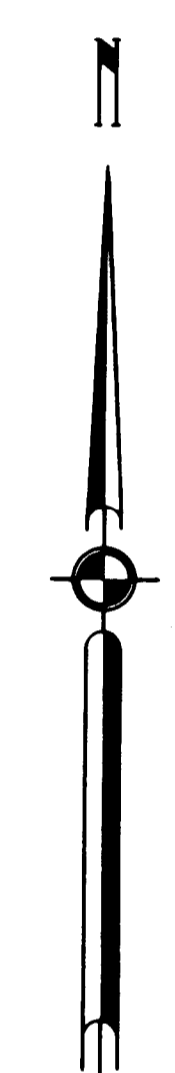
INDSOR
P. 2778
RY CO. 2734
TIS CO. 44

BEN

COOPER

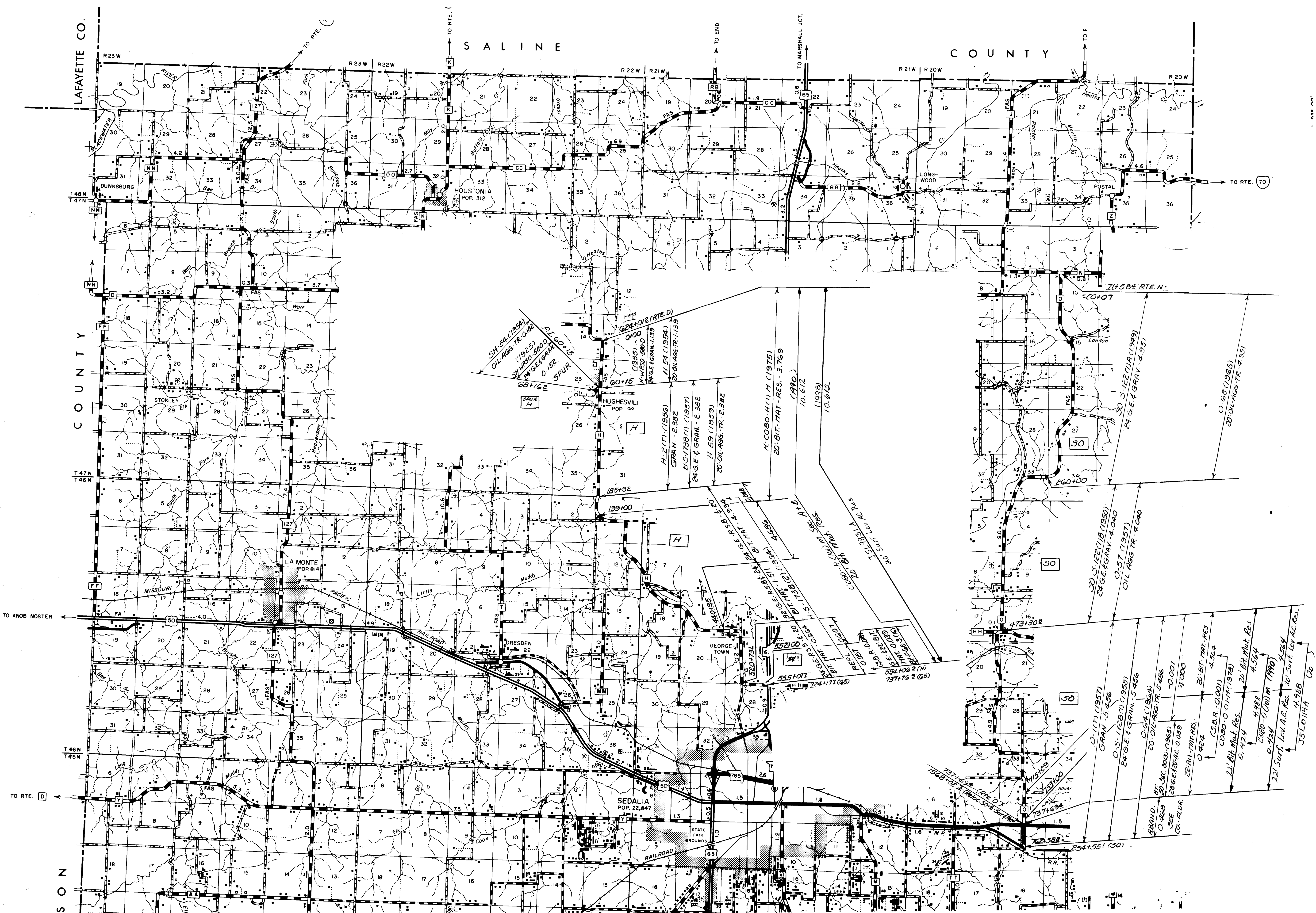
T47N
T46N

TO CLIFTON CITY

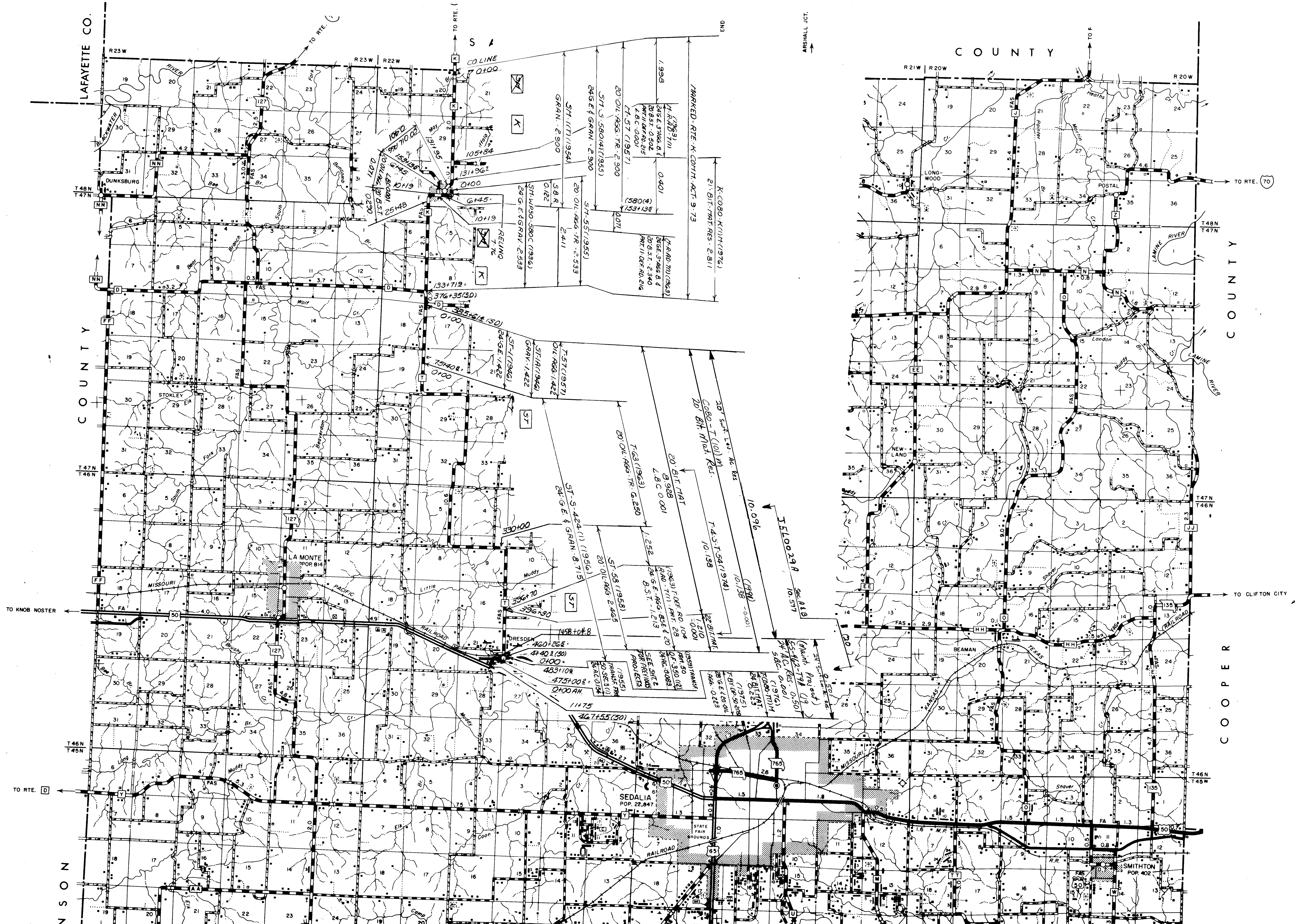


ROUTES:
E
U
Y
ZZ

© 080 SHEET 8 OF 12
PETTIS

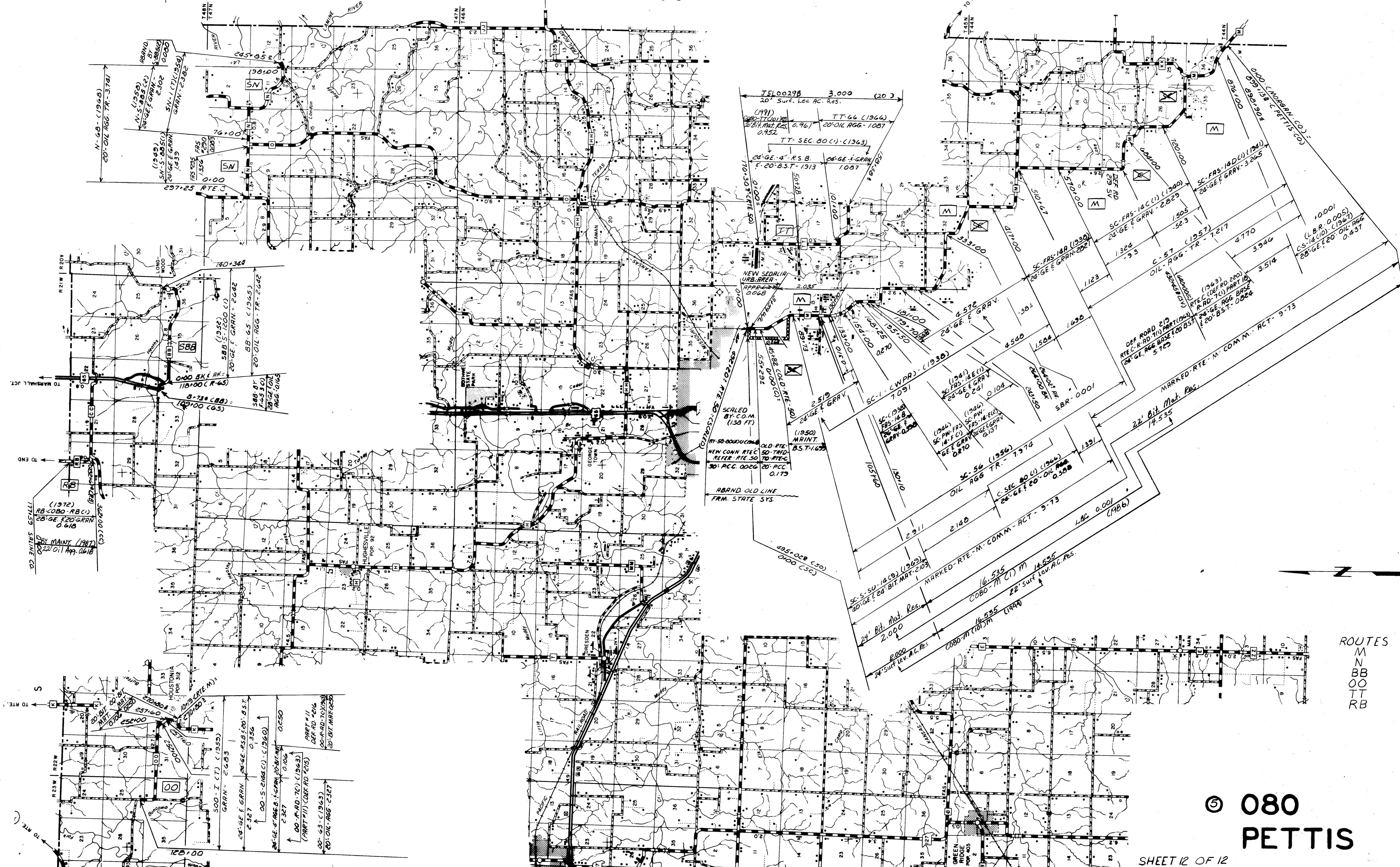


ROUTES:
 H
 H-SPUR
 O



ROUTES:
K
T

© 080 SHEET II OF 12
PETTIS



© 080
 PETTIS

ROUTES
 M
 NB
 OO
 TT
 RB