



STATE

COUNTY

NOTE: REMAINING LENGTH OF BRIDGE IN ILLINOIS = 1469 FT. (0.271) TOTAL LENGTH BR. = 2279 FT. OR (0.432)

ILLINOIS STATE LINE  
 REAL STEEL STRUCTURE OF 3RD TRUSS SPAN  
 8+89.8 (Calc.)

TRANSF. TO CITY & CO. FOR MAINT.  
 COMM. ACT. 3-76 3.334

34-DF-54-4(12) (1983)  
 REPLACE BR. DECK REPAIR  
 SUBSTR. 20' AC.  
 3370006 (19)  
 Replace Br. Deck 20' AC. BR.  
 0.161

34-DF-277(6) (1959)  
 WID. 20' AC. 1.932

34-DF-277(7) (1960) 4.730

34-DF-277(8) (1961) 4.730

34-DF-277(9) (1962) 4.730

34-DF-277(10) (1963) 4.730

34-DF-277(11) (1964) 4.730

34-DF-277(12) (1965) 4.730

34-DF-277(13) (1966) 4.730

34-DF-277(14) (1967) 4.730

34-DF-277(15) (1968) 4.730

34-DF-277(16) (1969) 4.730

34-DF-277(17) (1970) 4.730

34-DF-277(18) (1971) 4.730

34-DF-277(19) (1972) 4.730

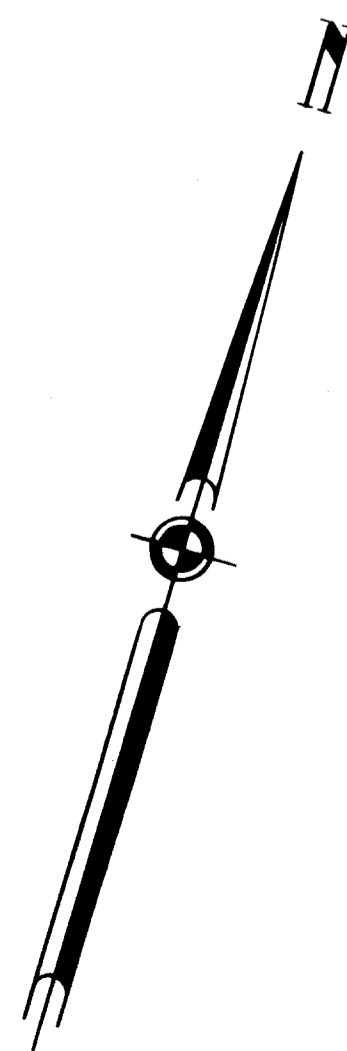
ROUTES 54  
 AD  
 RA  
 AB

3

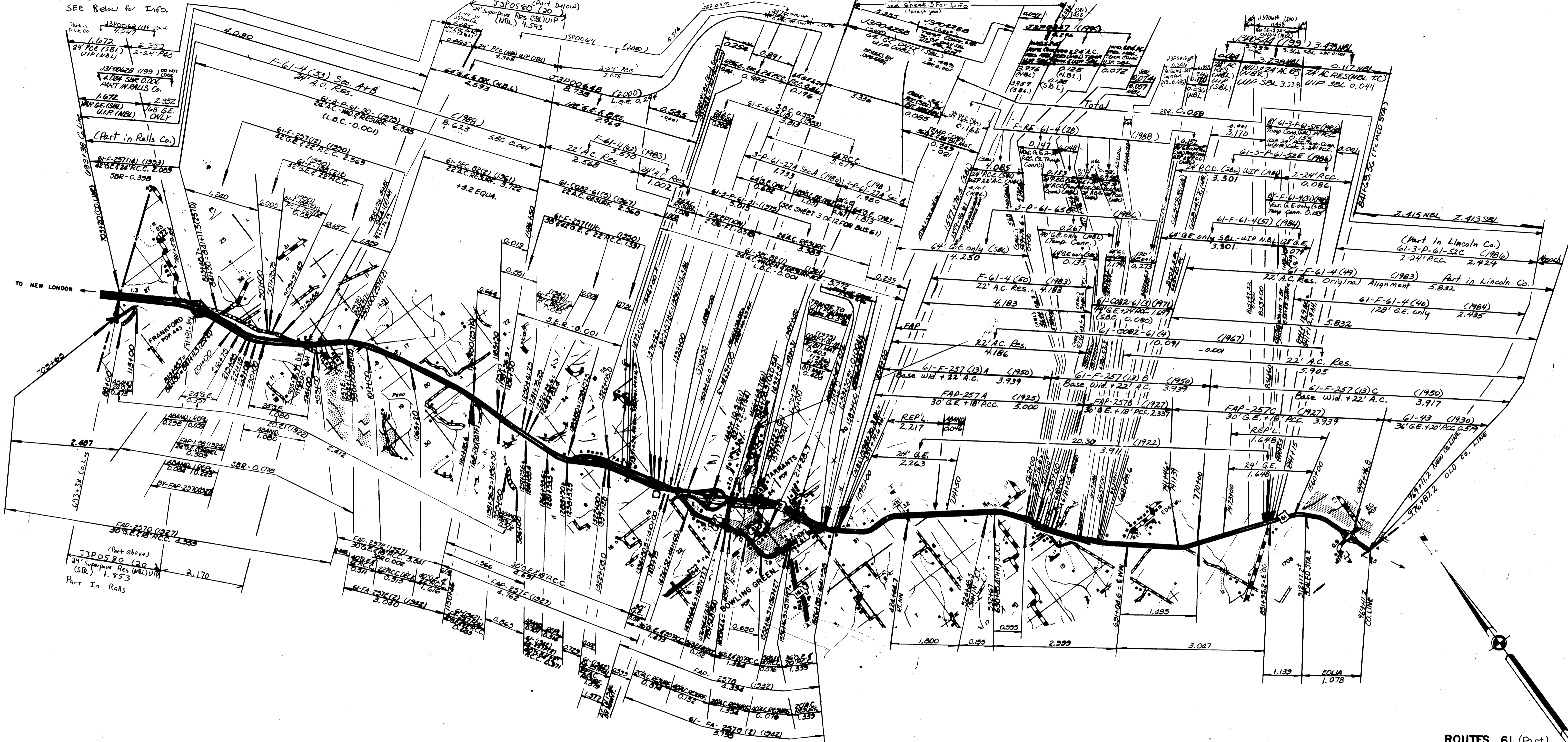
082

SHEET 1 OF 12

PIKE



SEE Below for Info.

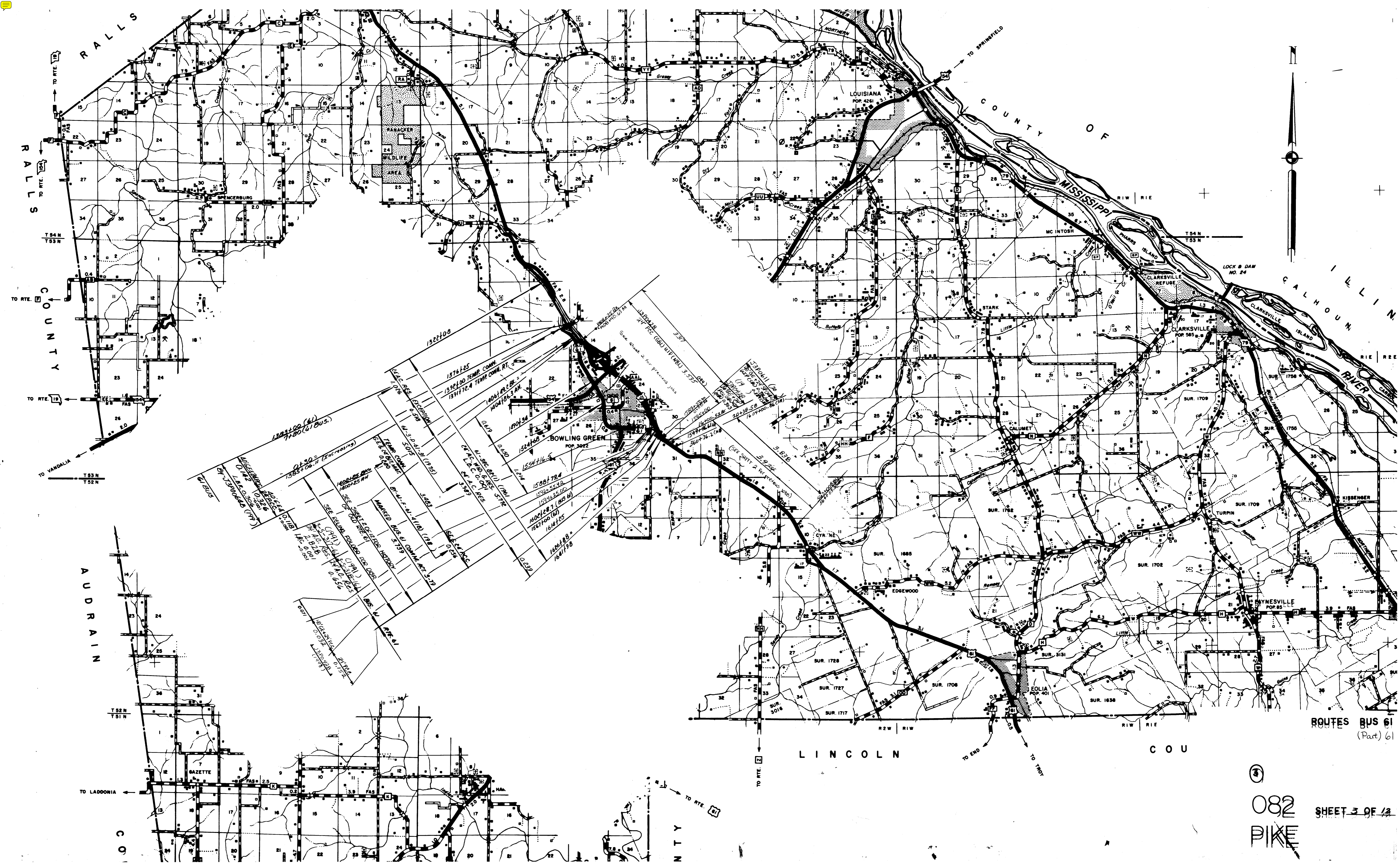


ROUTES 61 (Part)

3

082  
PIKE

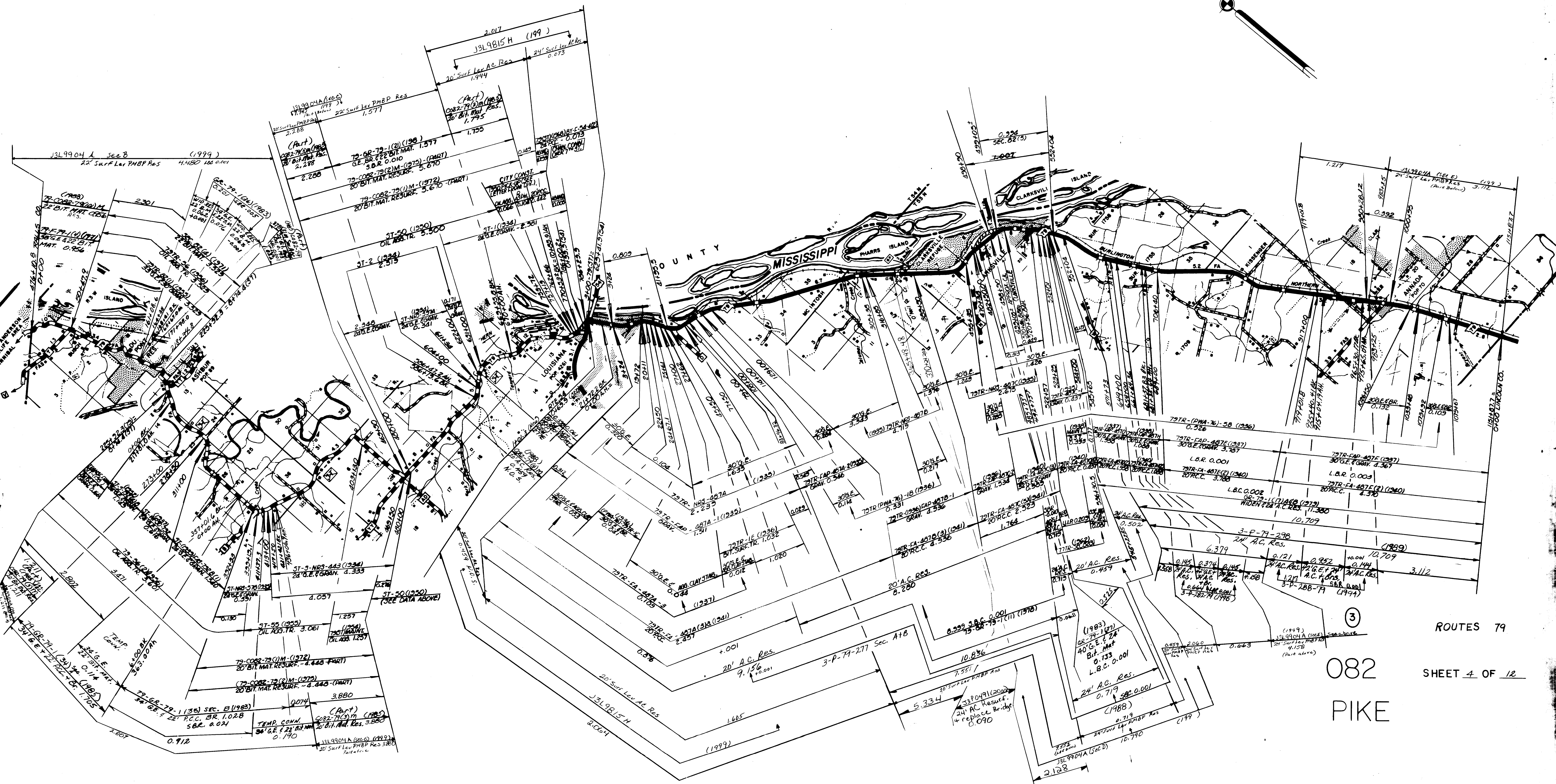
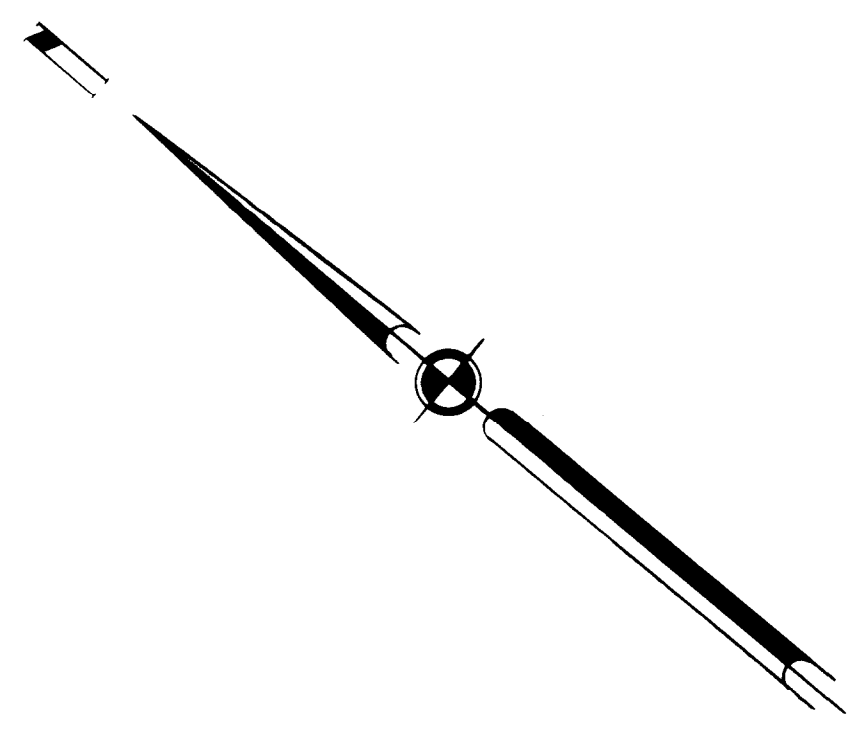
SHEET 2 OF 12



ROUTES BUS 61  
(Part) 61

082  
PIKE

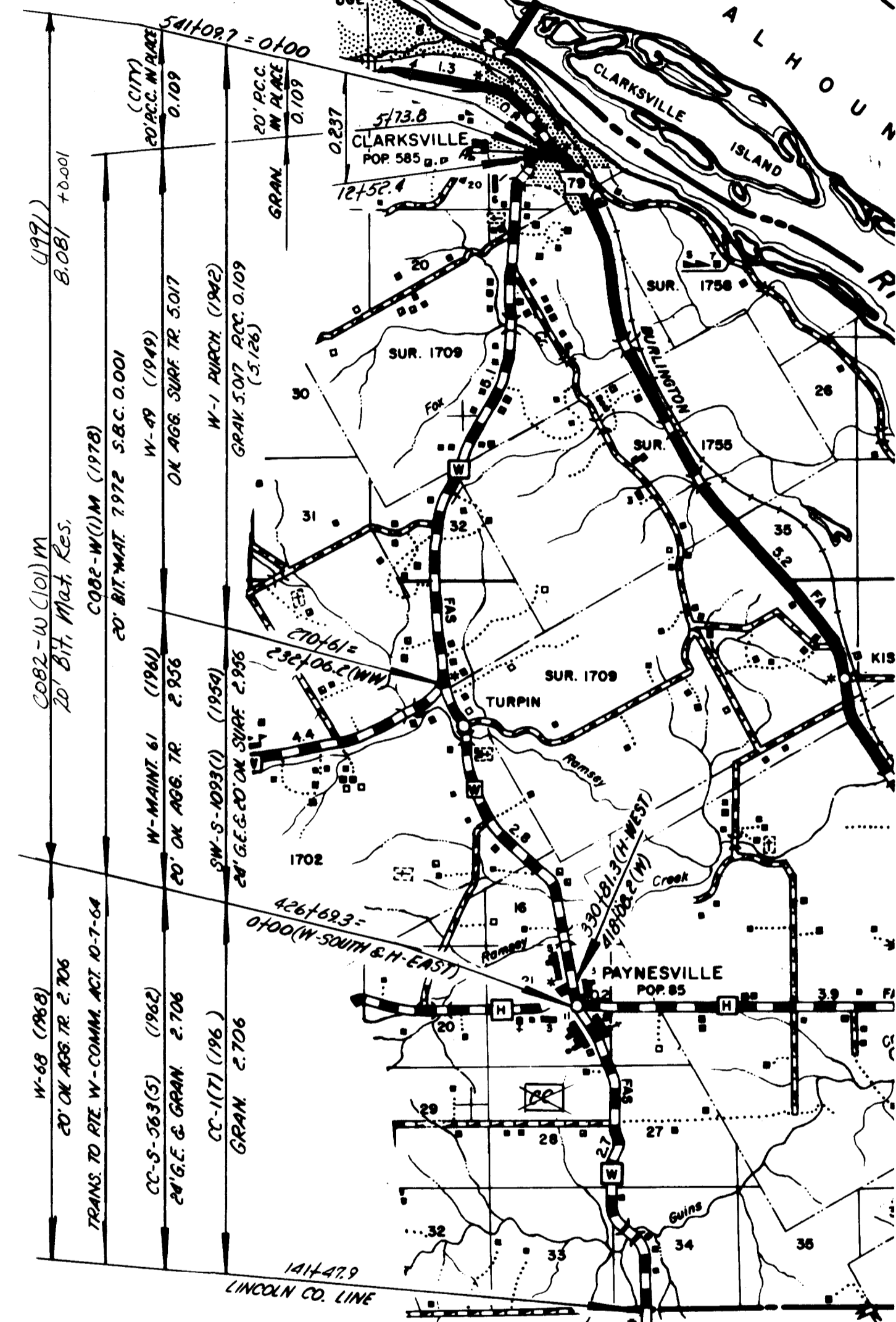
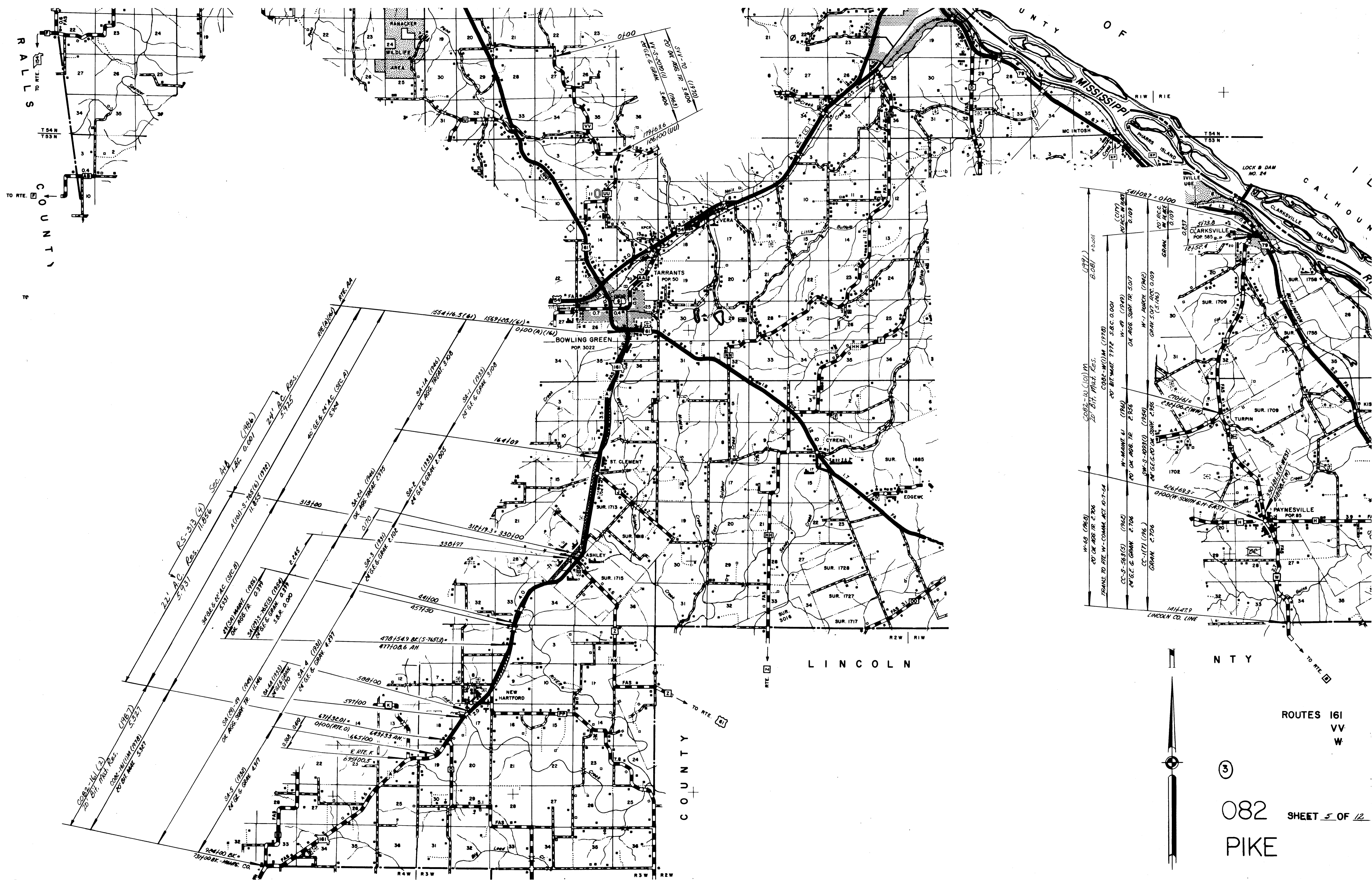
SHEET 3 OF 13



ROUTES 79

082  
PIKE

SHEET 4 OF 12



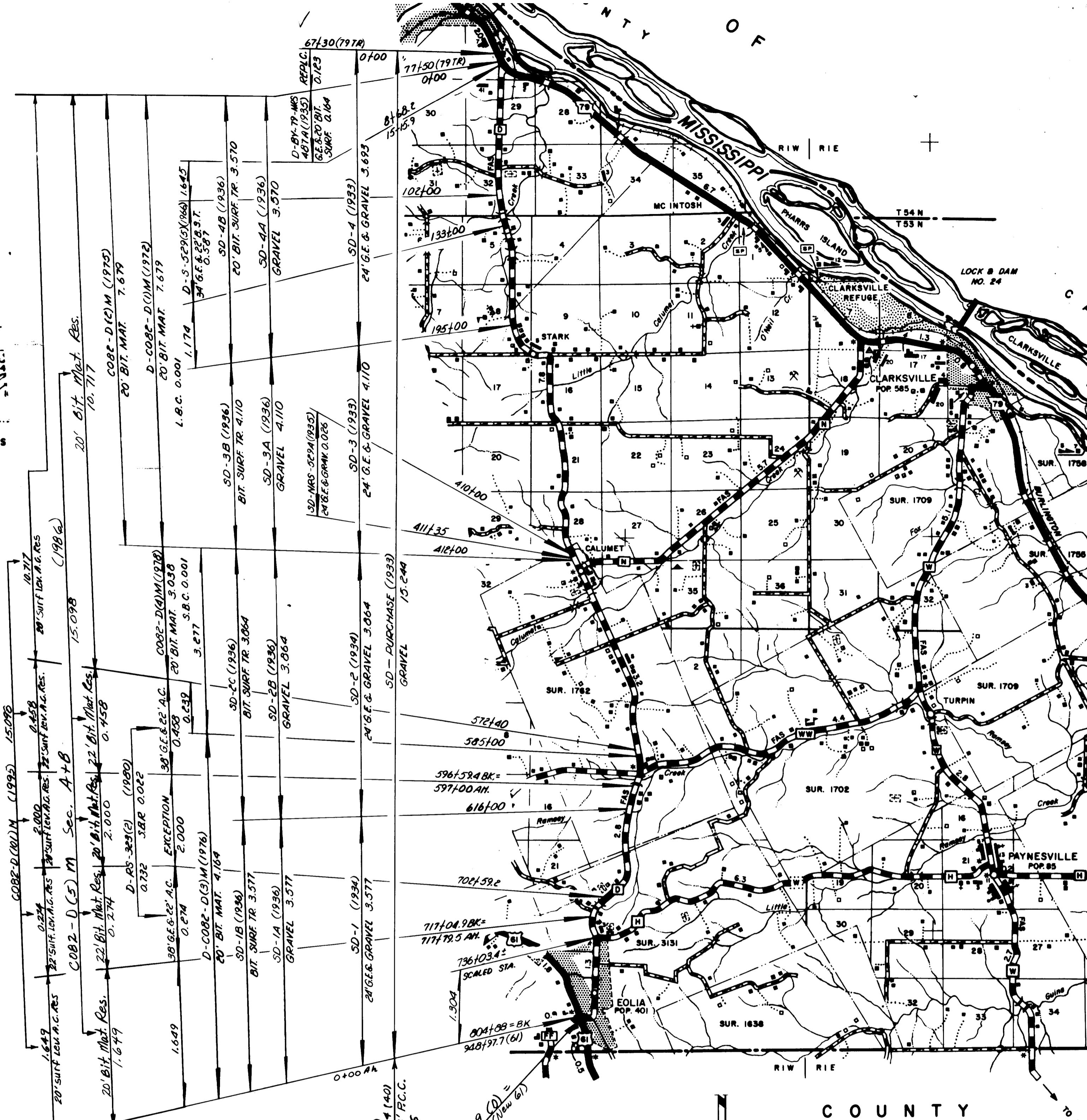
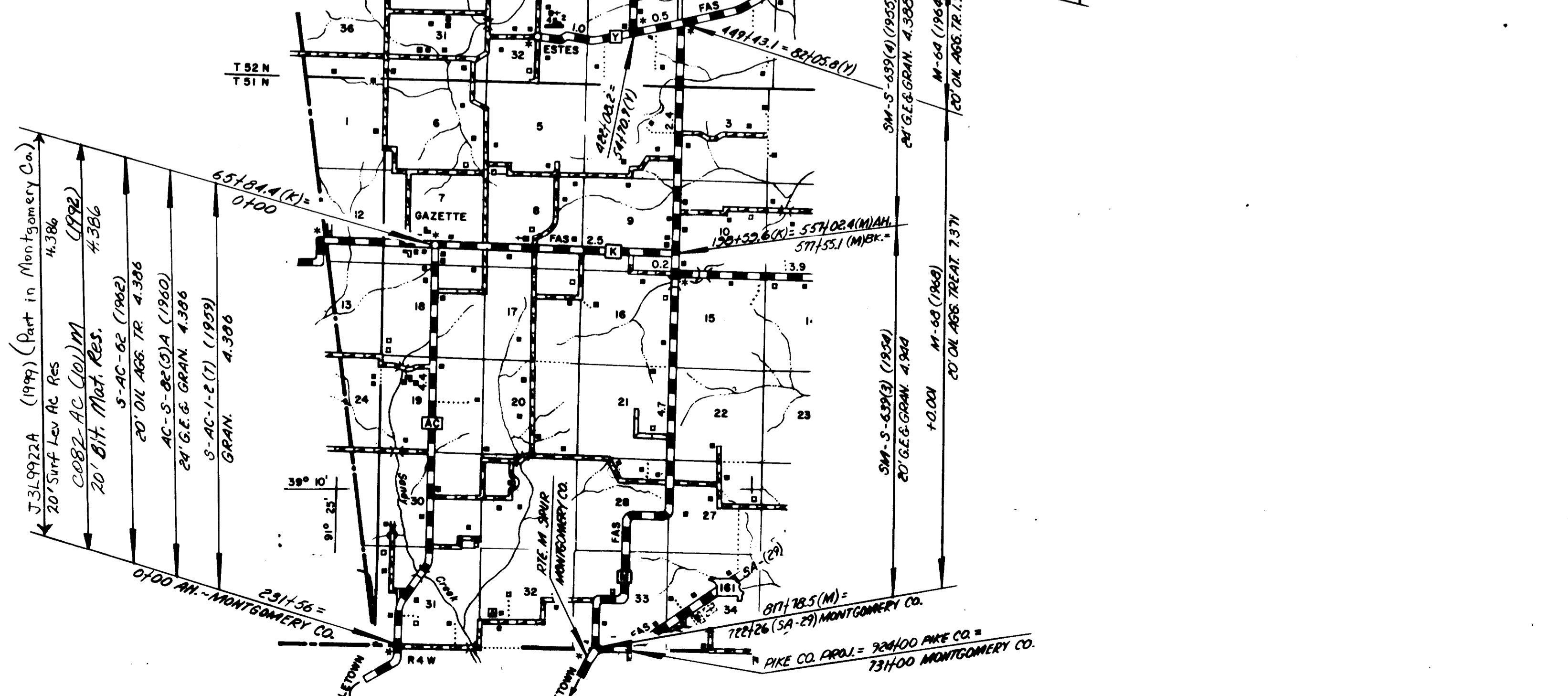
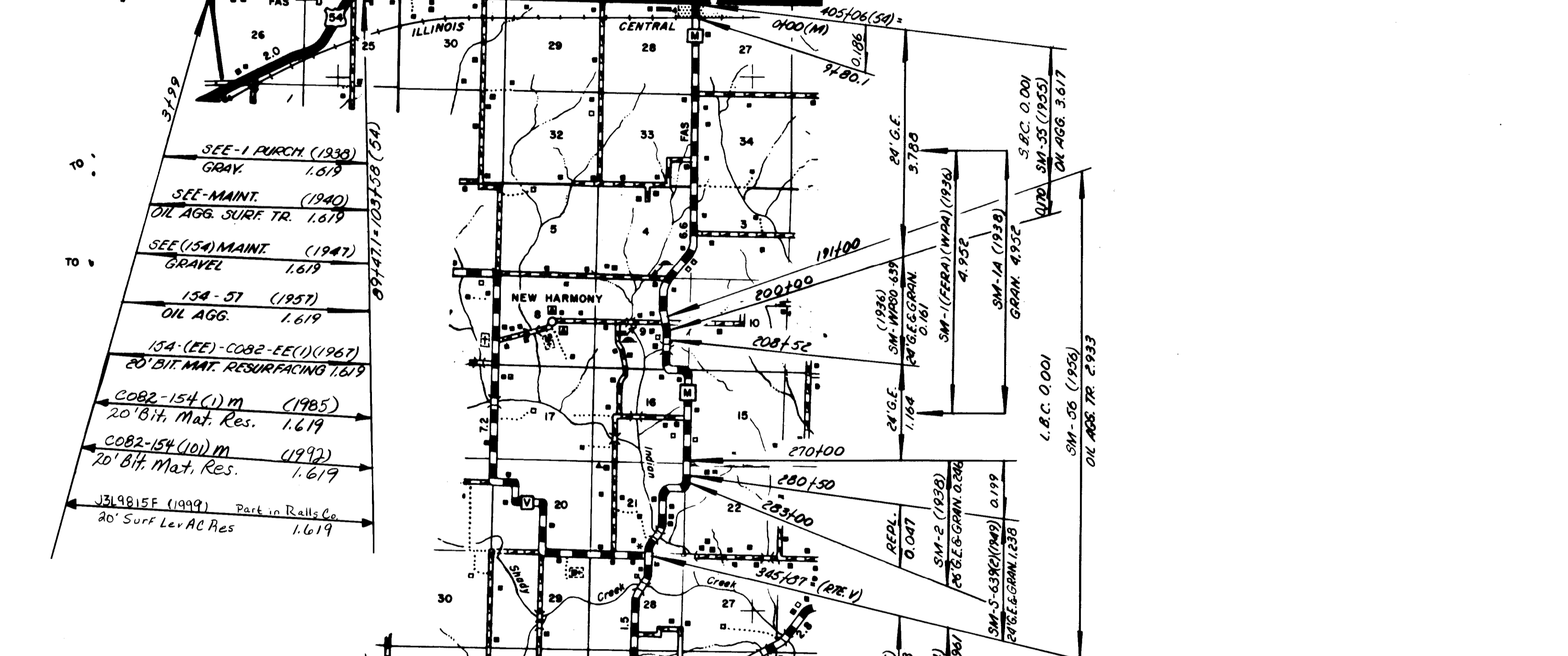
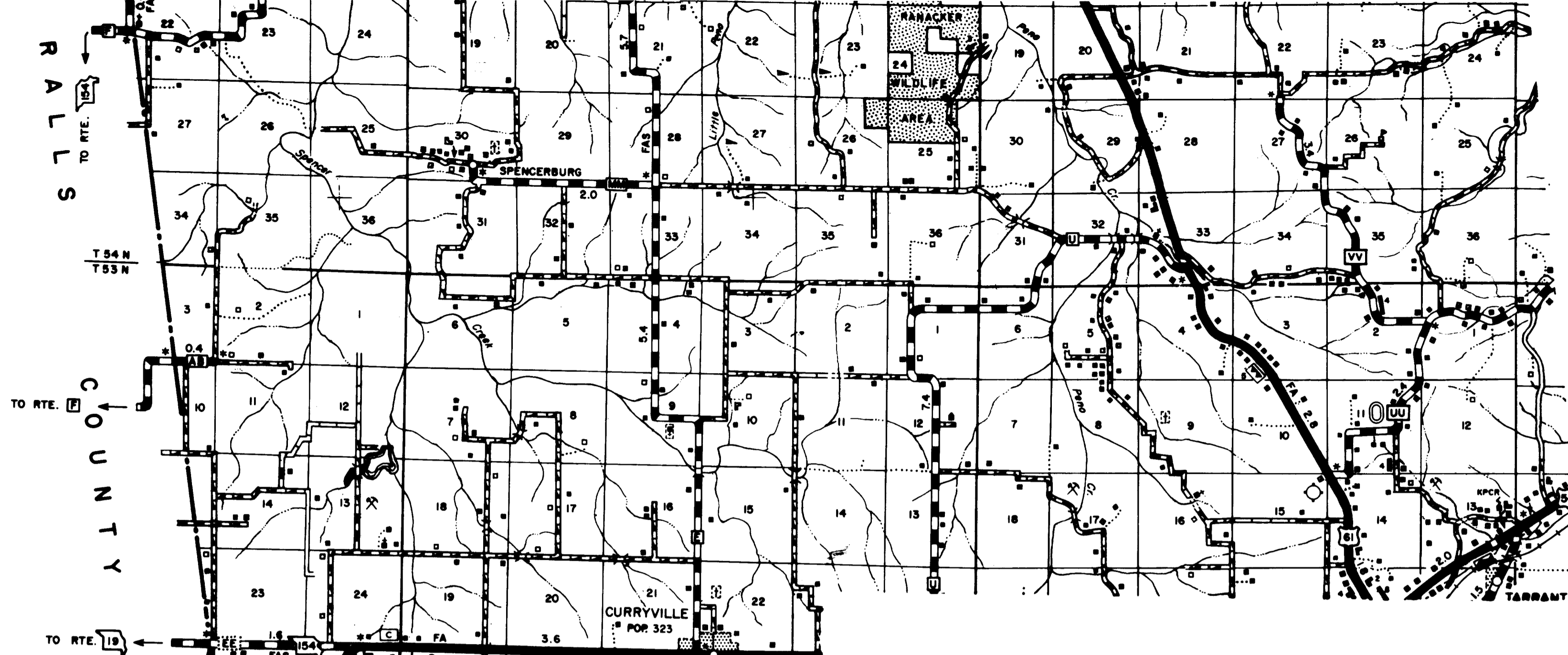
3

082

PIKE

ROUTES 161  
VV  
W

SHEET 5 OF 12



COUNTY OF RALLS

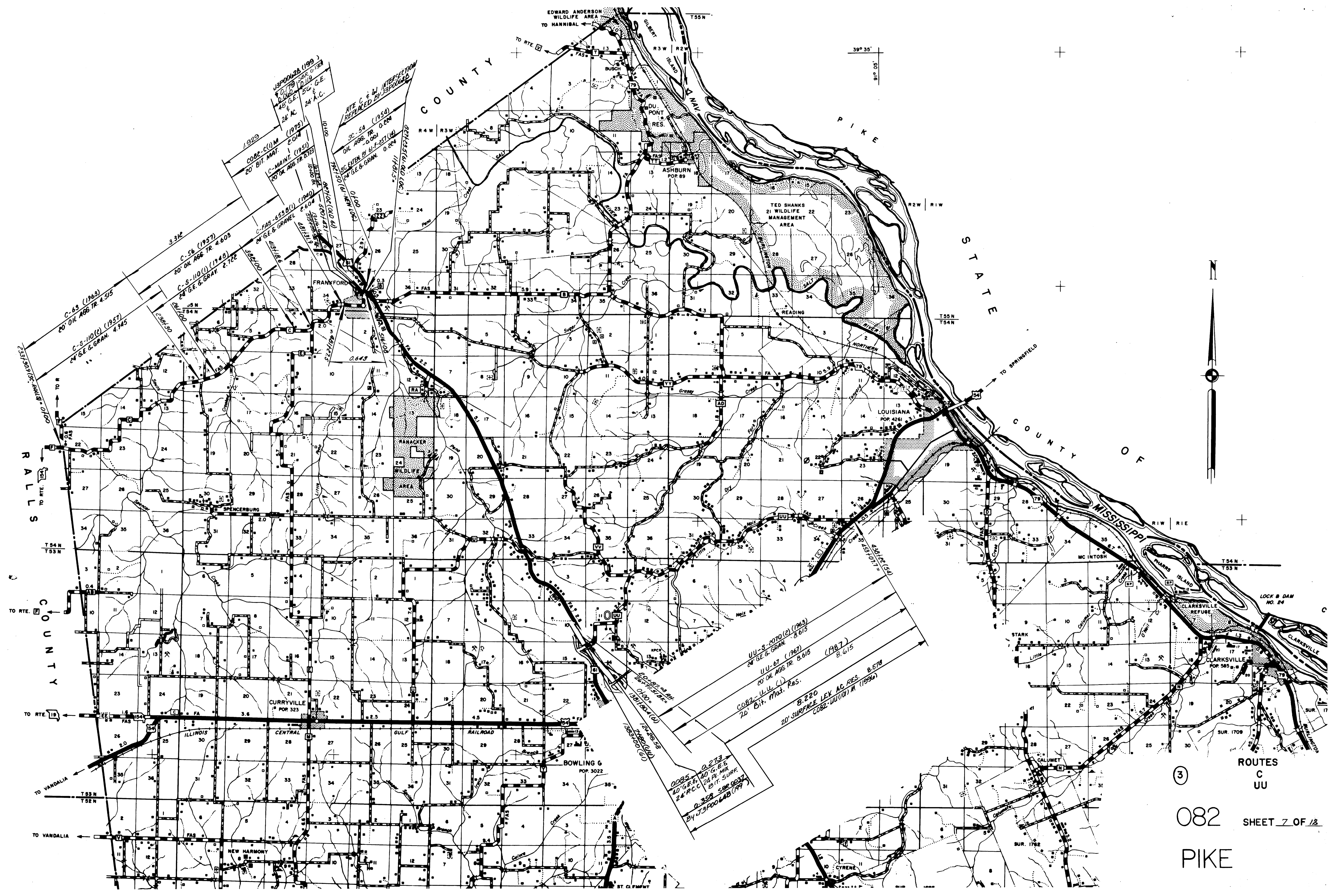
COUNTY

ROUTES M  
154  
AC  
D

③

082 SHEET 6 OF 12

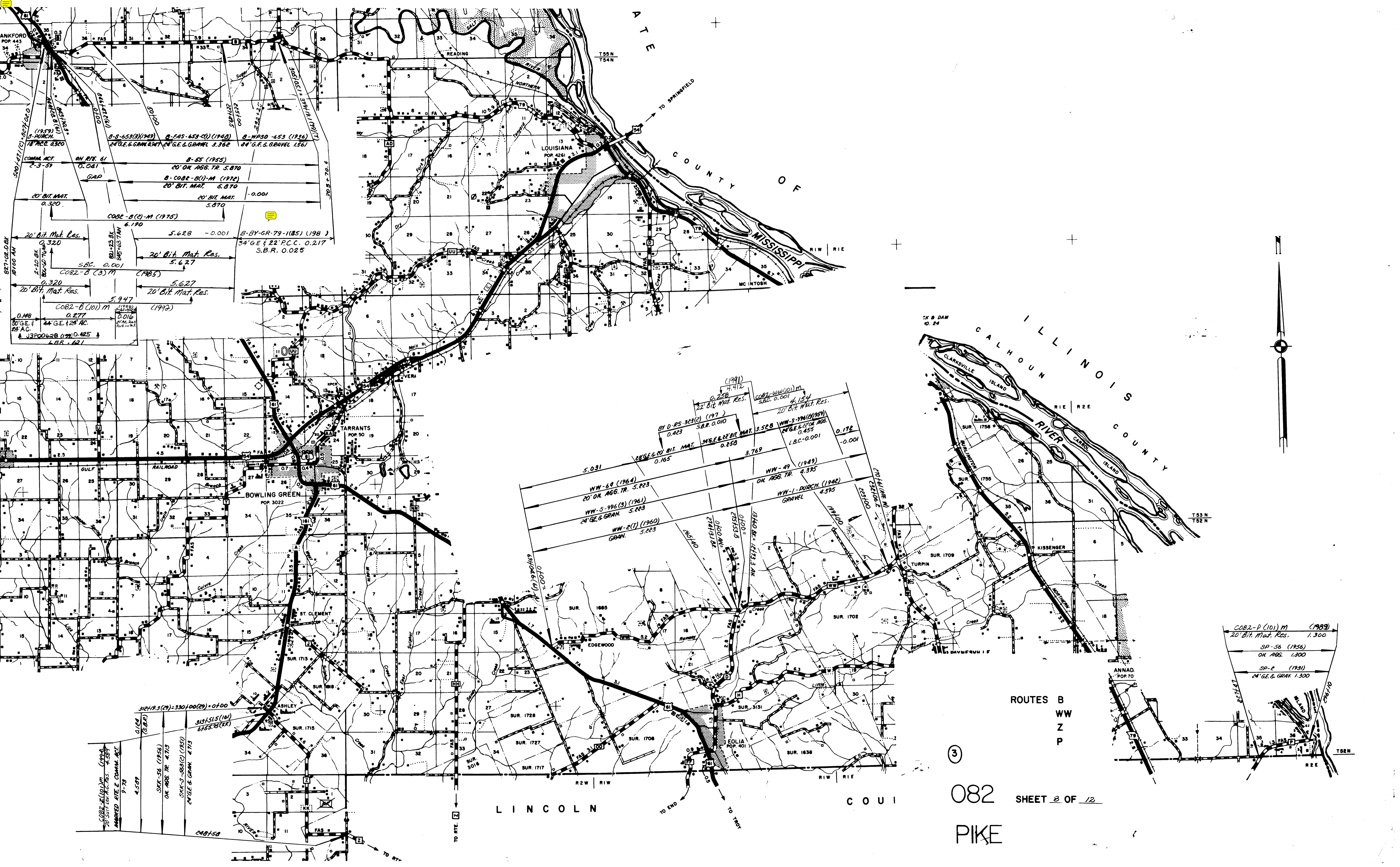
PIKE



1929  
 COBE-C(1)M (1975)  
 20 BIT. MAINT. 2.014  
 C-MAINT. (1951)  
 20 OR AGG. TR. 0.123  
 1929  
 C-56 (1957)  
 20' OIL AGG. TR. 4,603  
 C-S-110(C) (1948)  
 24' G.E. & GRAN. 2,722  
 C-63 (1963)  
 20' OIL AGG. TR. 1,515  
 C-S-110(C) (1957)  
 24' G.E. & GRAN. 4,945  
 1929  
 C-FAS-653(B) (1940)  
 24' G.E. & GRAN. 2,604  
 1929  
 SC-54 (1954)  
 OIL AGG. TR. 0.001  
 G.C. GREEN BY 61-257(U)  
 24' G.E. & GRAN. 0.024  
 1929  
 SC-54 (1954)  
 OIL AGG. TR. 0.001  
 G.C. GREEN BY 61-257(U)  
 24' G.E. & GRAN. 0.024  
 1929  
 SC-54 (1954)  
 OIL AGG. TR. 0.001  
 G.C. GREEN BY 61-257(U)  
 24' G.E. & GRAN. 0.024

UU-S-2070(C) (1963)  
 20' G.E. & GRAN. 8,615  
 UU-67 (1967)  
 20' OIL AGG. TR. 8,615  
 COBZ-U Mod. Res. (1987)  
 20' Bit. Mod. Res. 8,615  
 B-220  
 20' SURFACE LEY AC RES. 8,678  
 COBZ-UU(10) M (1984)

③  
 082  
 PIKE  
 ROUTES  
 C  
 UU  
 SHEET 7 OF 13



MISSOURI  
 COUNTY OF  
 LINCOLN

CALHOUN COUNTY  
 MISSISSIPPI RIVER  
 CLARKVILLE ISLAND  
 ANNAD ISLAND

ROUTES B  
 W  
 Z  
 P

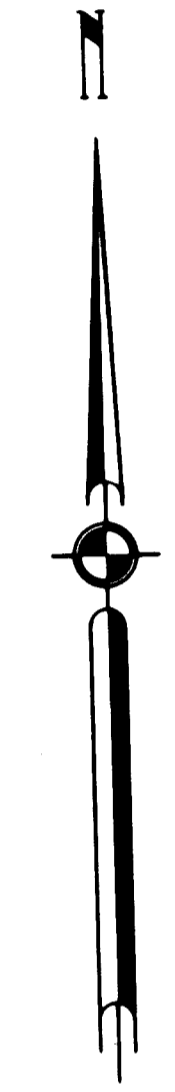
3  
 082  
 PIKE

SHEET 8 OF 12

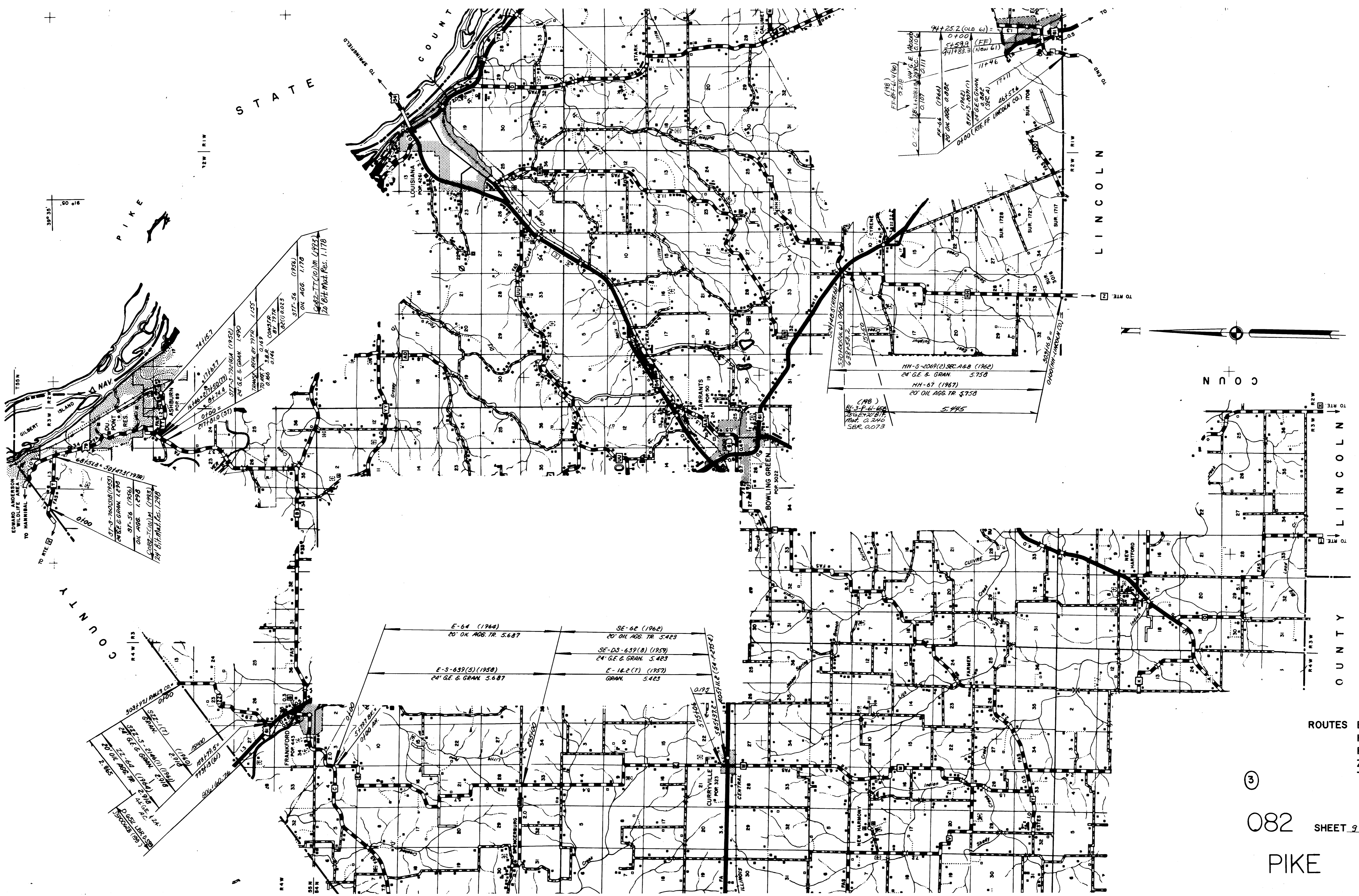
LINCOLN

COU

COB2-P(101)M (1989)  
 20' Bit. Mat. Res. 1.300  
 SP-56 (1956)  
 OK AGG. 1.300  
 SP-E (1931)  
 24' GE. & GRAN. 1.300





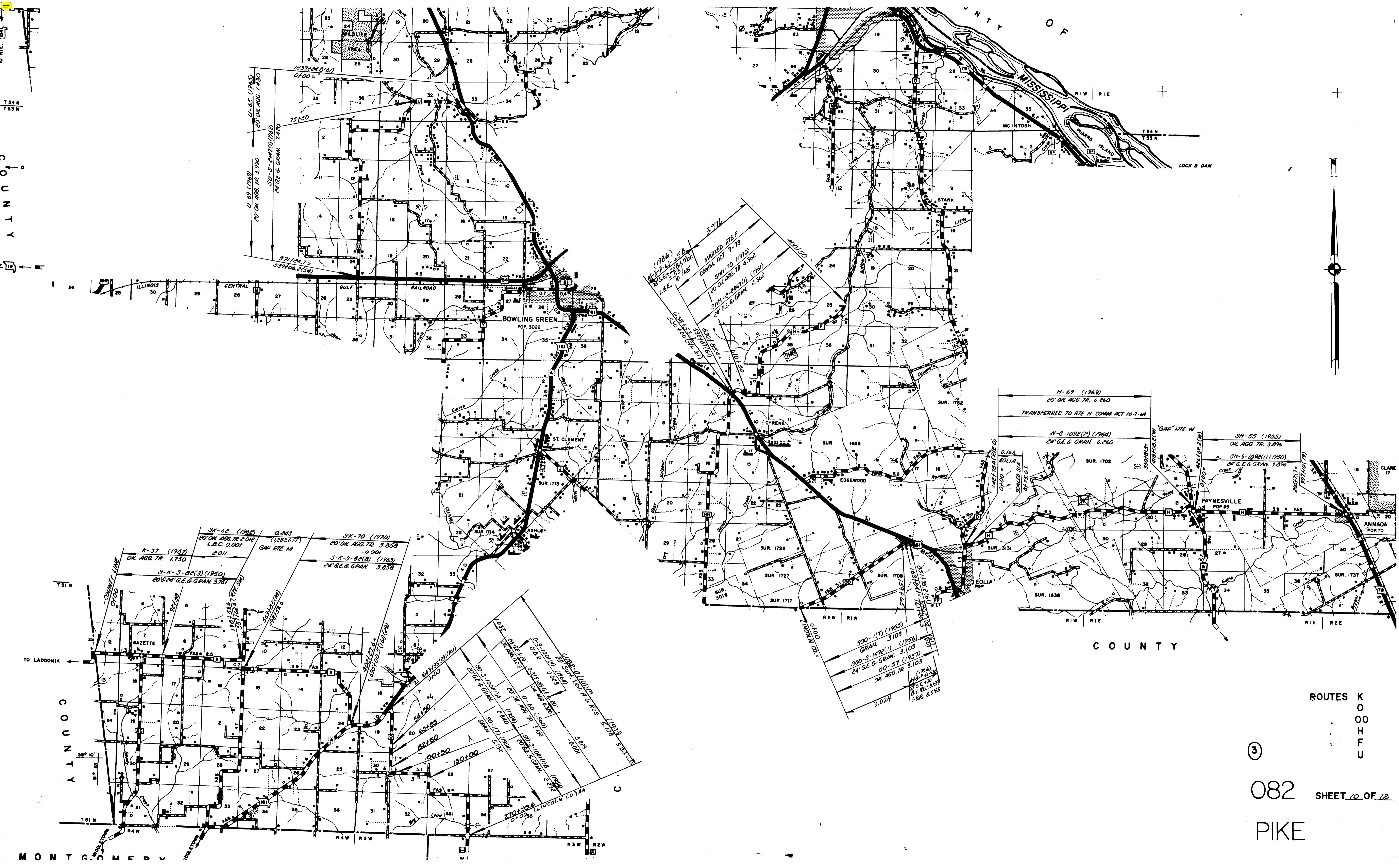


3

082 SHEET 9 OF 12

PIKE

ROUTES  
 E  
 HH  
 FF  
 ZZ  
 TT  
 T



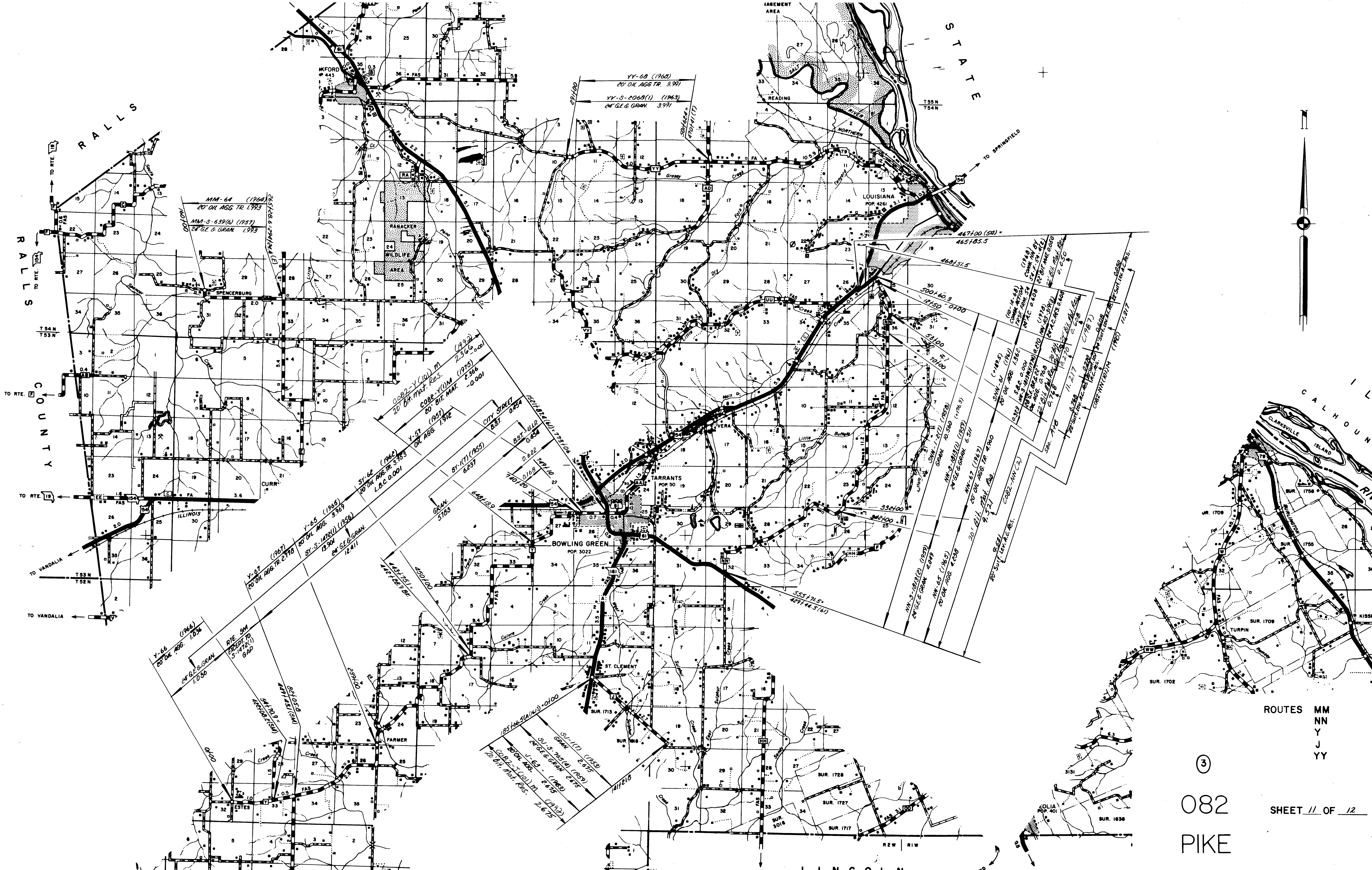
ROUTES  
K  
O  
O  
H  
F  
U

③

082

SHEET 10 OF 12

PIKE



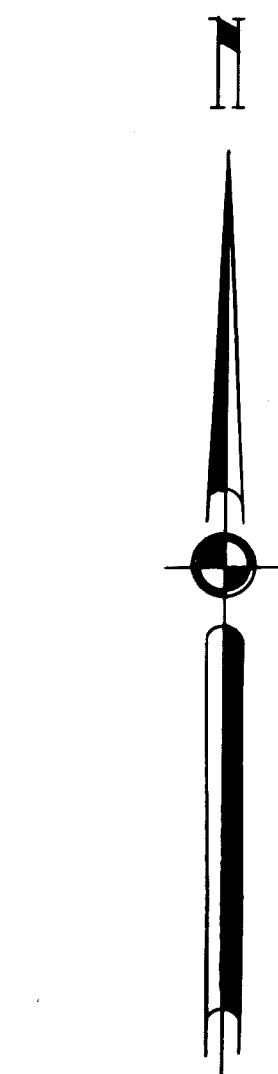
RALLS COUNTY

TO RTE. 10

TO RTE. 18

TO VANDALIA

TO VANDALIA



CALHOUN COUNTY

CLARKSVILLE ISLAND

KISSENEE RIVER

TURPIN

SUR. 1709

SUR. 1702

SUR. 1758

SUR. 1755

SUR. 1756

SUR. 1757

SUR. 1758

SUR. 1759

SUR. 1760

SUR. 1761

SUR. 1762

SUR. 1763

SUR. 1764

SUR. 1765

SUR. 1766

SUR. 1767

SUR. 1768

SUR. 1769

SUR. 1770

SUR. 1771

SUR. 1772

SUR. 1773

SUR. 1774

SUR. 1775

SUR. 1776

SUR. 1777

SUR. 1778

SUR. 1779

SUR. 1780

SUR. 1781

SUR. 1782

SUR. 1783

SUR. 1784

SUR. 1785

SUR. 1786

SUR. 1787

SUR. 1788

SUR. 1789

SUR. 1790

SUR. 1791

SUR. 1792

SUR. 1793

SUR. 1794

SUR. 1795

SUR. 1796

SUR. 1797

SUR. 1798

SUR. 1799

SUR. 1800

ROUTES

MM

NN

YY

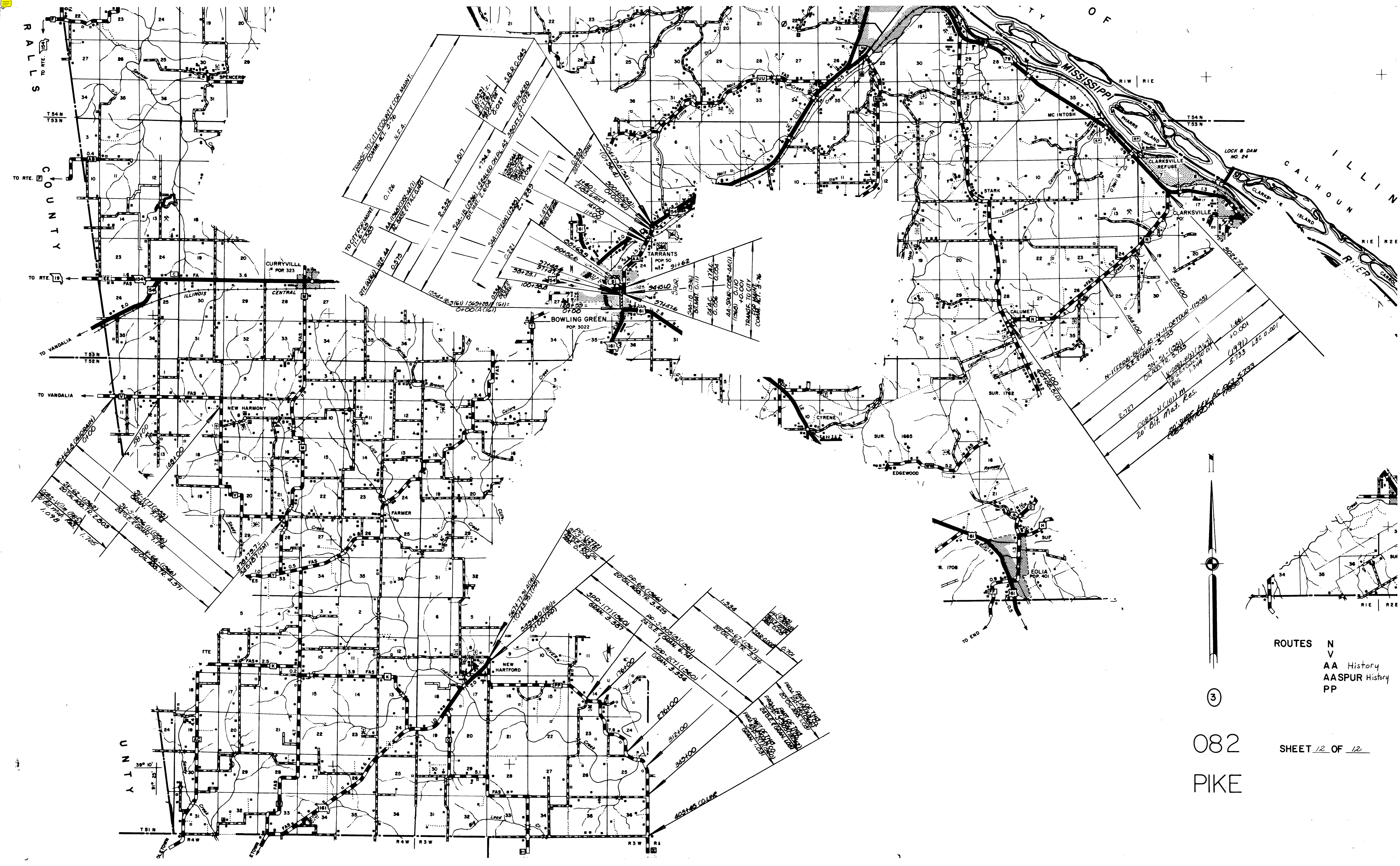
YY

③

082

PIKE

SHEET 11 OF 12



ROUTES  
 N  
 V  
 AA History  
 AASPU History  
 PP

3

082  
 PIKE

SHEET 12 OF 12