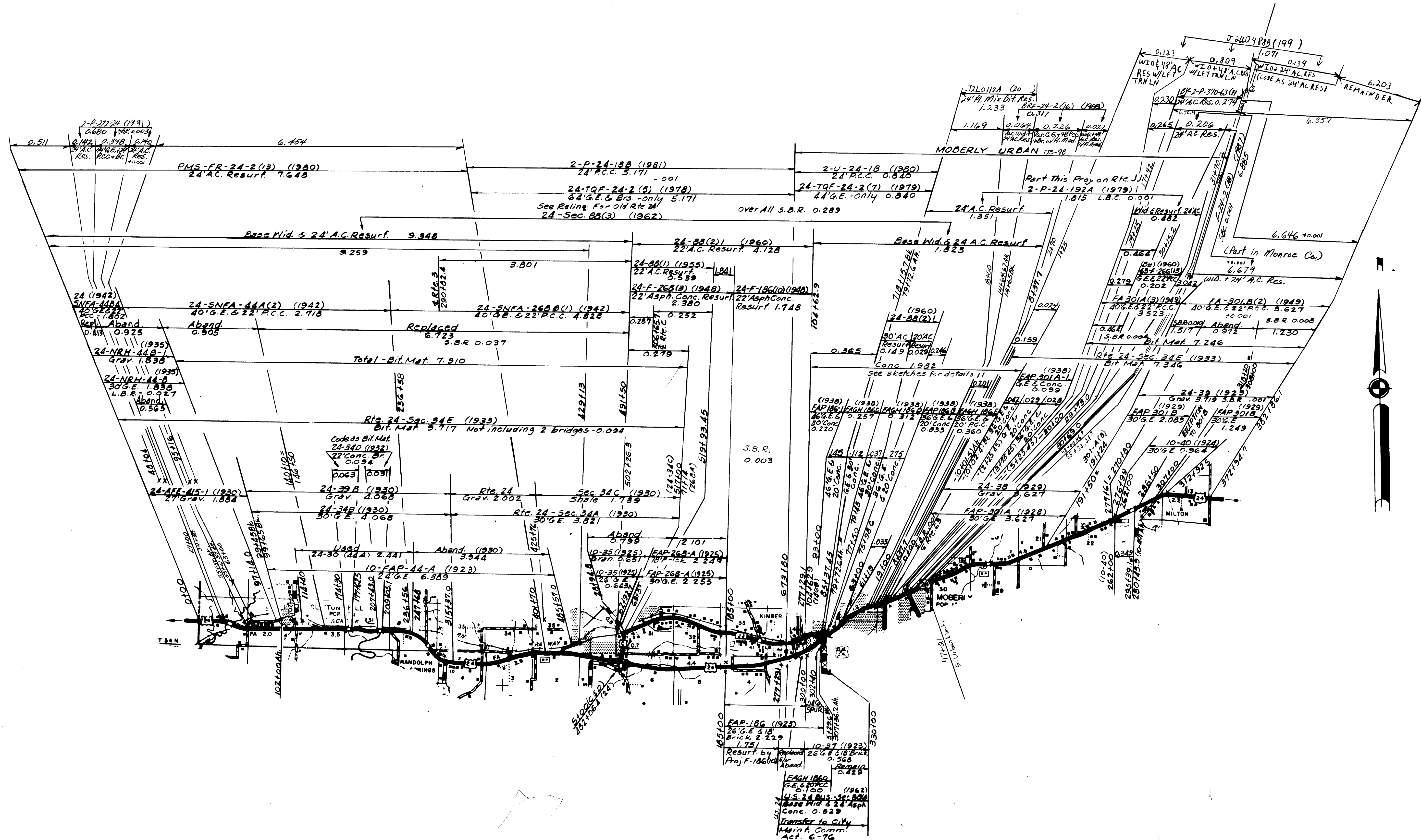
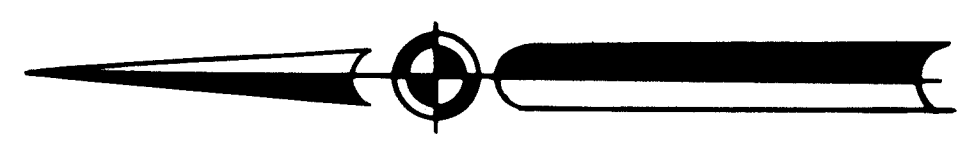
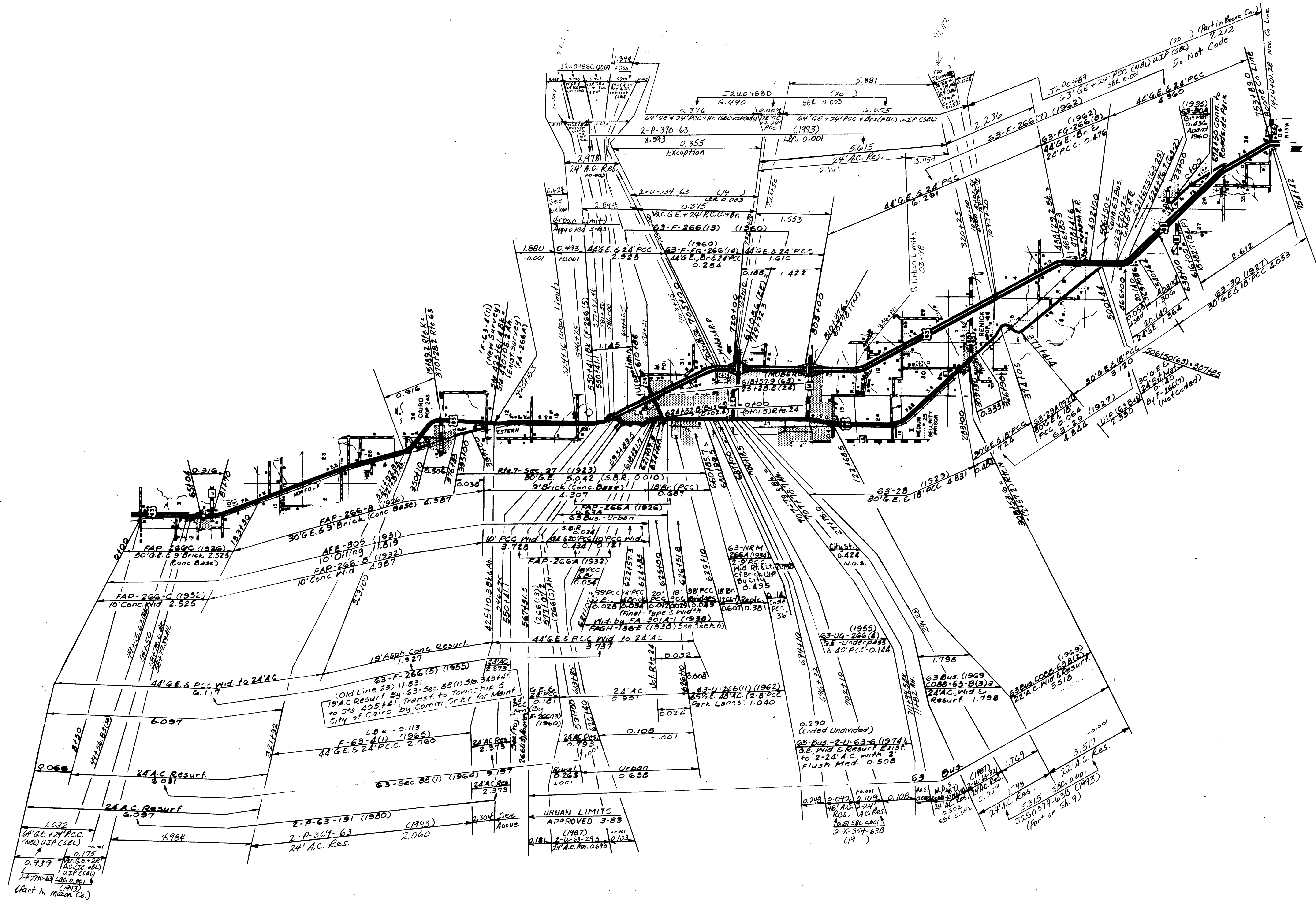


ROUTES
3
DD
AA
H
T

② 088 SHEET 1 OF 9
RANDOLPH

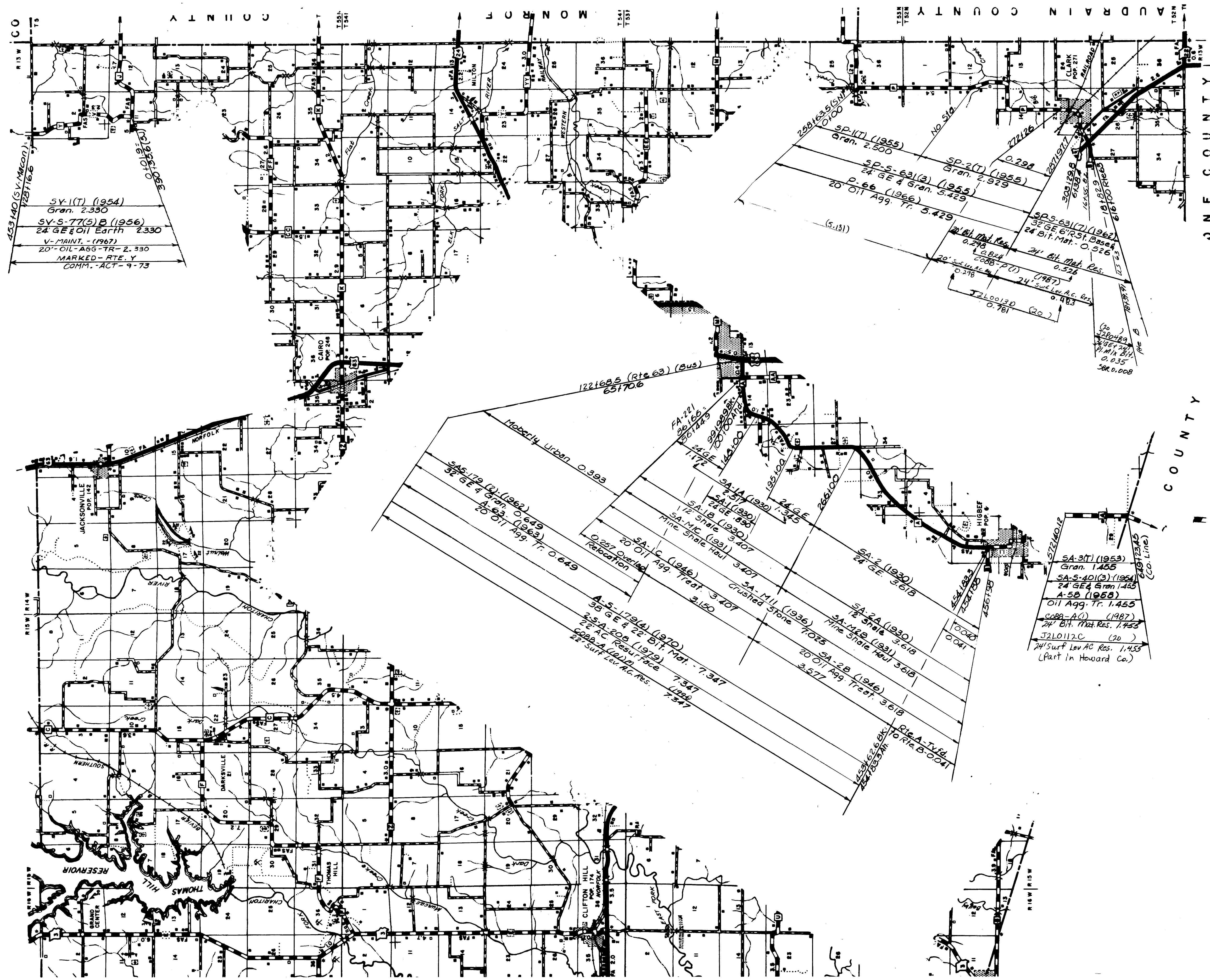


ROUTES
24



ROUTES
63
BUS. 63 (part)

② 088 SHEET 4 OF 9
RANDOLPH



453140 (S.V. McCord)
 237166
 16991005E
 SY-1(T) (1954)
 Gran. 2.330
 SY-S-77(5)B (1956)
 24' GE & Oil Earth 2.330
 V-MAINT. - (1967)
 20' OIL-A66-TR-2.330
 MARKED-RTE. Y
 COMM.-ACT-9-73

258162.5(S.M.)
 0100
 SP-1(T) (1955)
 Gran. 2.500
 SP-2(T) (1955)
 Gran. 2.929
 SP-S-63(2) (1955)
 24' GE & Gran. 5.429
 P-66 (1966)
 20' OIL Agg. Tr. 5.429
 (S.131)

272126
 12271917
 303130
 6439
 16456.8
 101920.6
 16100 RIES
 SP-S-63(7) (1962)
 32' GE 6" R. St. Base
 24' Bit. Mat. 0.526
 24' Bit. Mat. Res. 0.526
 24' Bit. Mat. Res. 0.526
 20' Surf Lev. AC. Res. 0.483
 24' Surf Lev. AC. Res. 0.483
 J2L00130
 0.781
 (20)

(Co.)
 J2P0489
 26184.244
 P.M.M.H.
 0.035
 SER. 0.008

122168.5 (Rte 63) (Bus)
 65170.6

545-179 (C) (1962)
 32' GE & Gran. 0.649
 A-62 (1962)
 20' OIL Agg. Tr. 0.649

20' OIL Agg. Treat. 3.407
 SA-C (1946)
 Relocation
 0.257 Overland

A-5-172(4) (1970)
 38' GE & 22' Bit. Mat. - 7.347
 25-A-208 (1979)
 22' MC Resurface
 7.347
 7.347
 7.347
 22' Surf Lev. AC. Res. 7.347

FA-221
 26166
 26144.9
 24' GE
 11.72

9A-1A (1930)
 24' GE
 1.345
 SA-1B (1930)
 12' Slate
 3.407
 SA-MC (1931)
 Nine Shale Haul

SA-MI (1936)
 Crushed Stone
 3.407
 3.150

SA-2 (1930)
 24' GE
 3.618

SA-2A (1930)
 12' Slate
 3.618
 SA-M2 (1931)
 Nine Shale Haul
 3.618

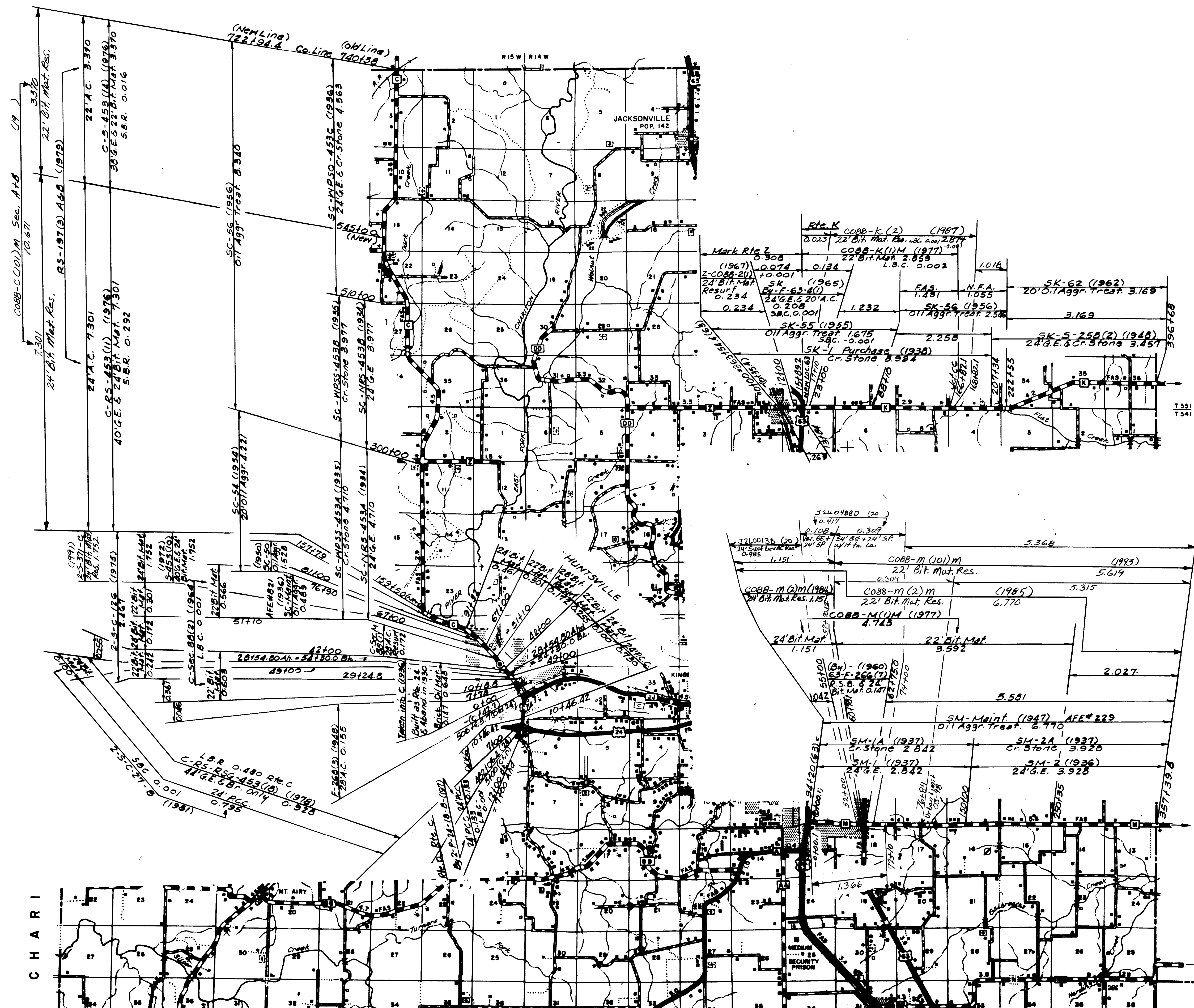
SA-2B (1946)
 20' OIL Agg. Treat.
 3.577

572140.2
 SA-3(T) (1953)
 Gran. 1.455
 SA-S-40(3) (1964)
 24' GE & Gran. 1.455
 A-5B (1968)
 OIL Agg. Tr. 1.455
 CORR-A(1) (1987)
 24' Bit. Mat. Res. 1.455
 J2L0112C
 (20)
 24' Surf Lev. AC. Res. 1.455
 (Part in Howard Co.)

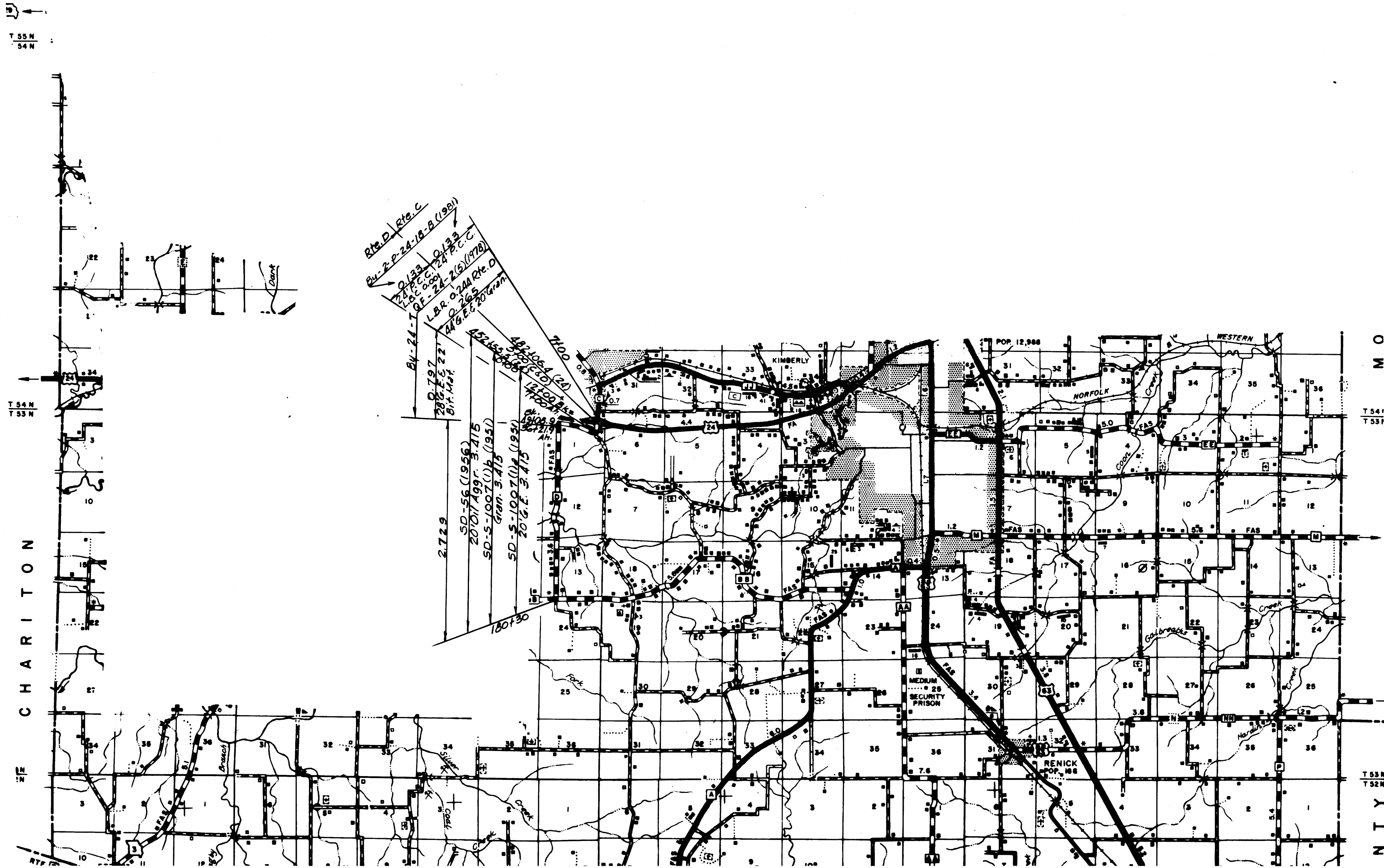
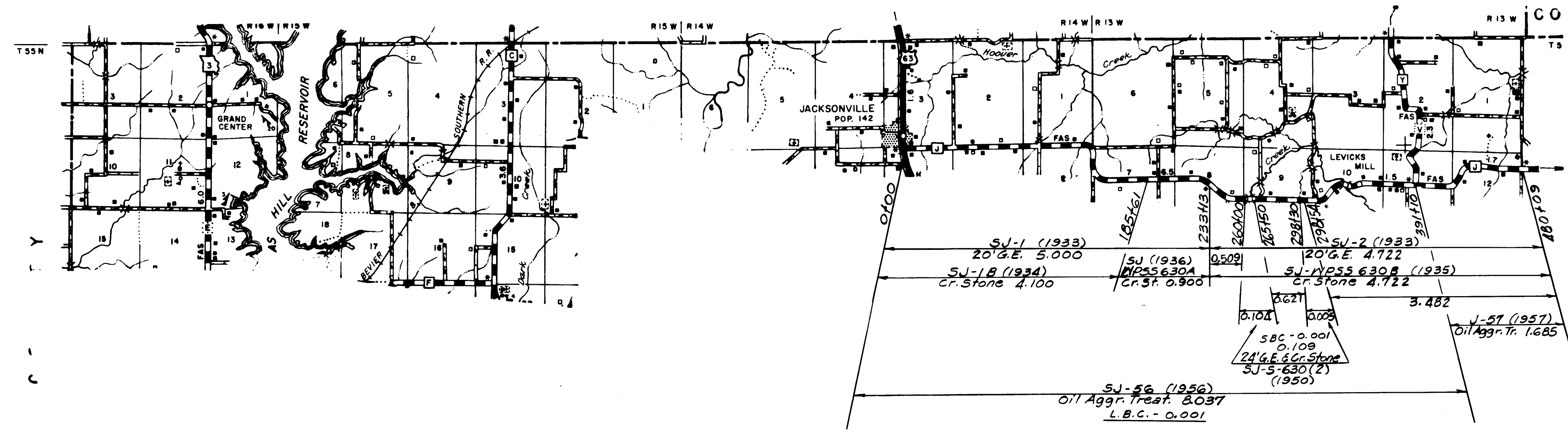
643123.45
 (Co. Line)



ROUTES
 A
 P
 Y



ROUTES
K
M
C



ROUTES
J
D

② 088 SHEET 8 OF 9
RANDOLPH

