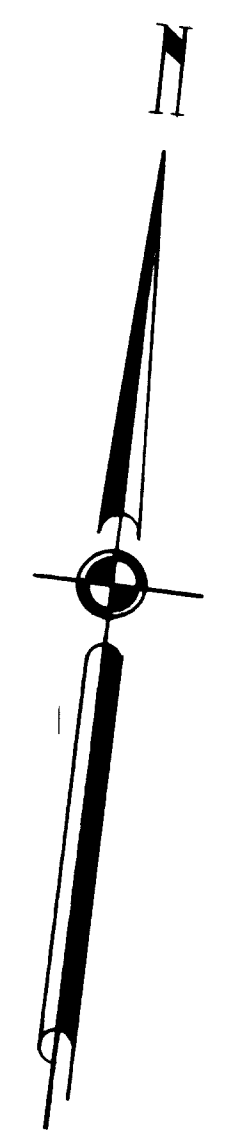


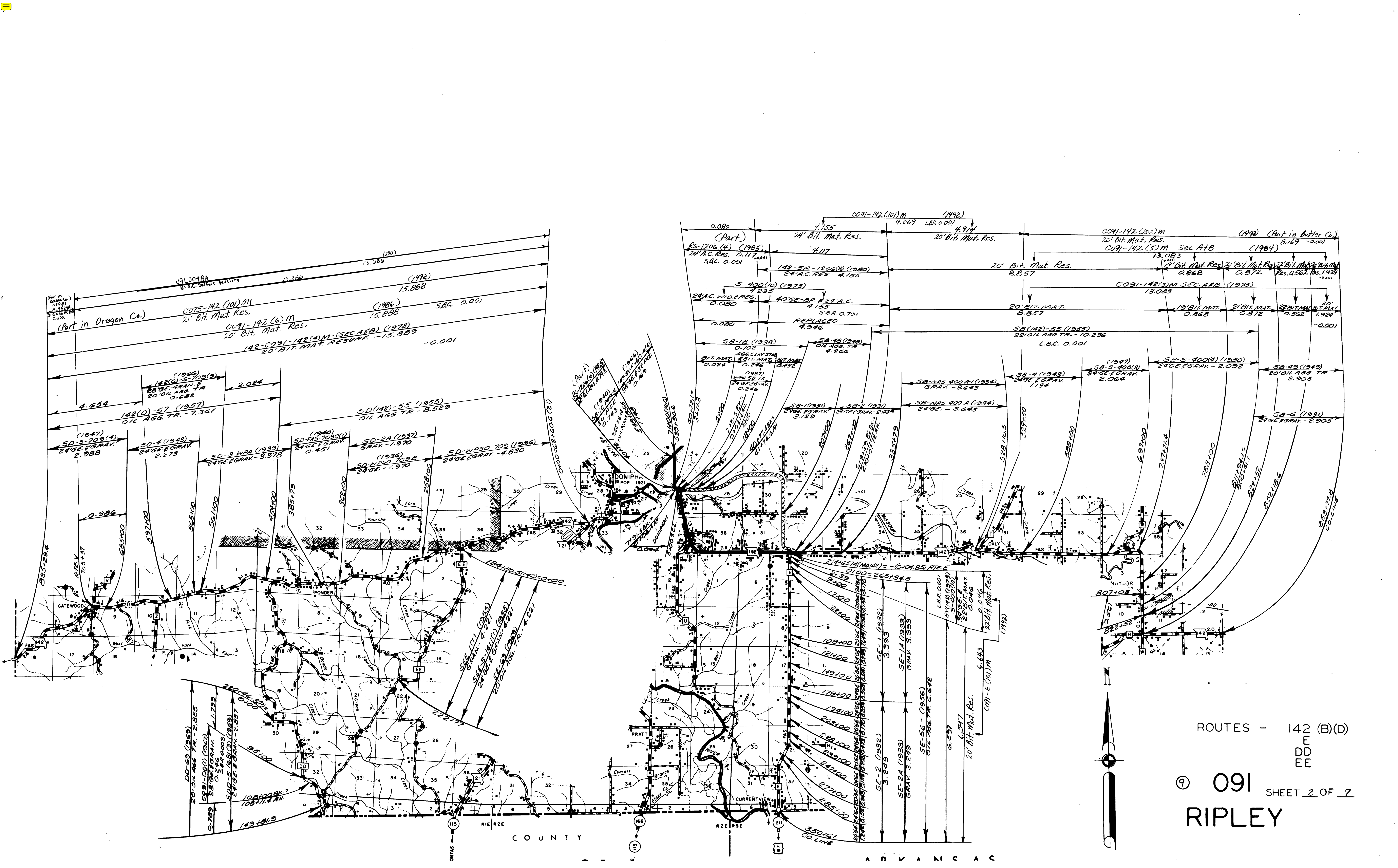
MARK TWAIN
NATIONAL
FOREST

COUNTY



ROUTES - 21
B

⑨ 091 SHEET 1 OF 7
RIPLEY



ROUTES - 142 (B)(D)

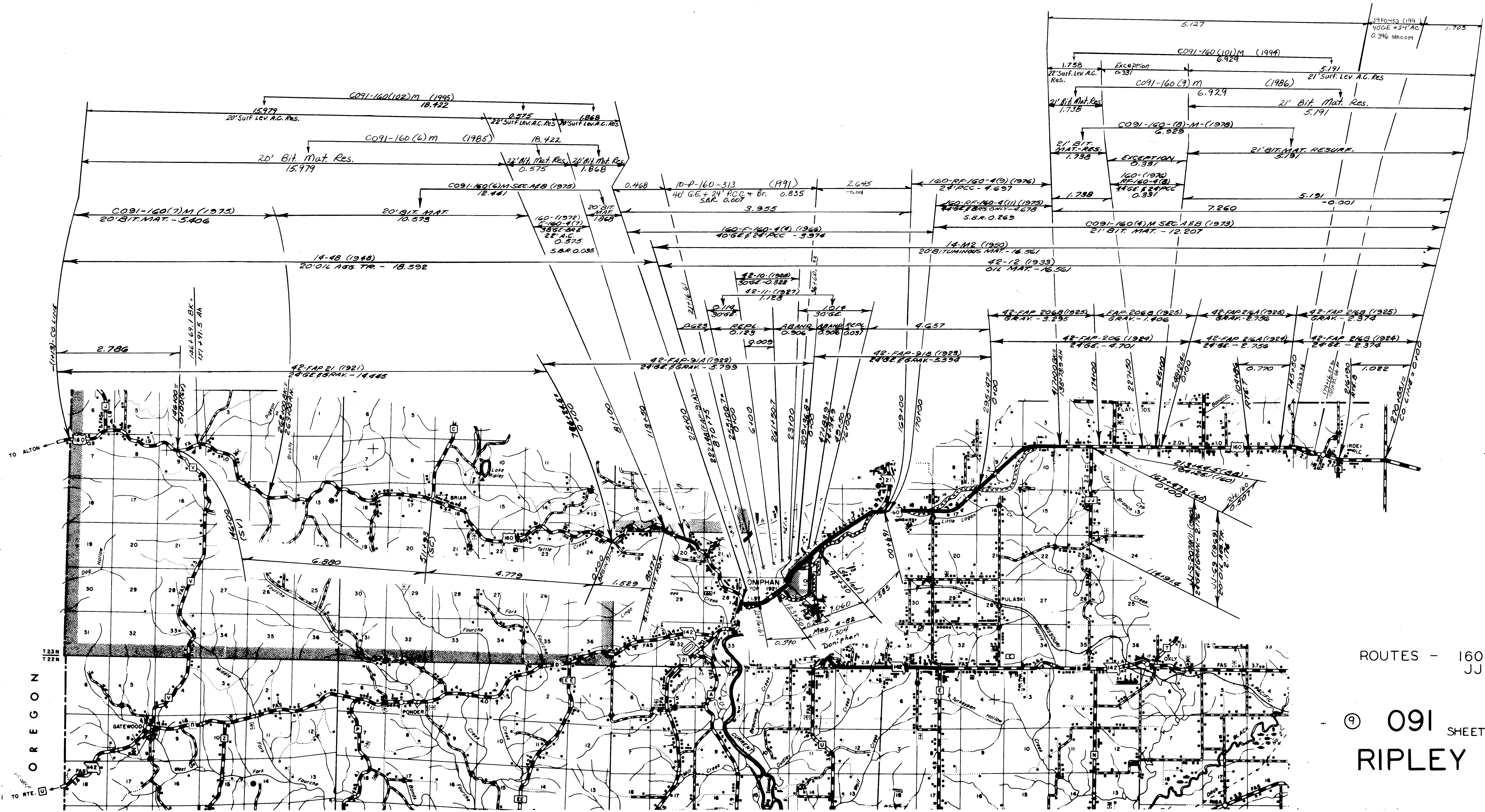
EE
DD
EE

① 091 SHEET 2 OF 7

RIPLEY

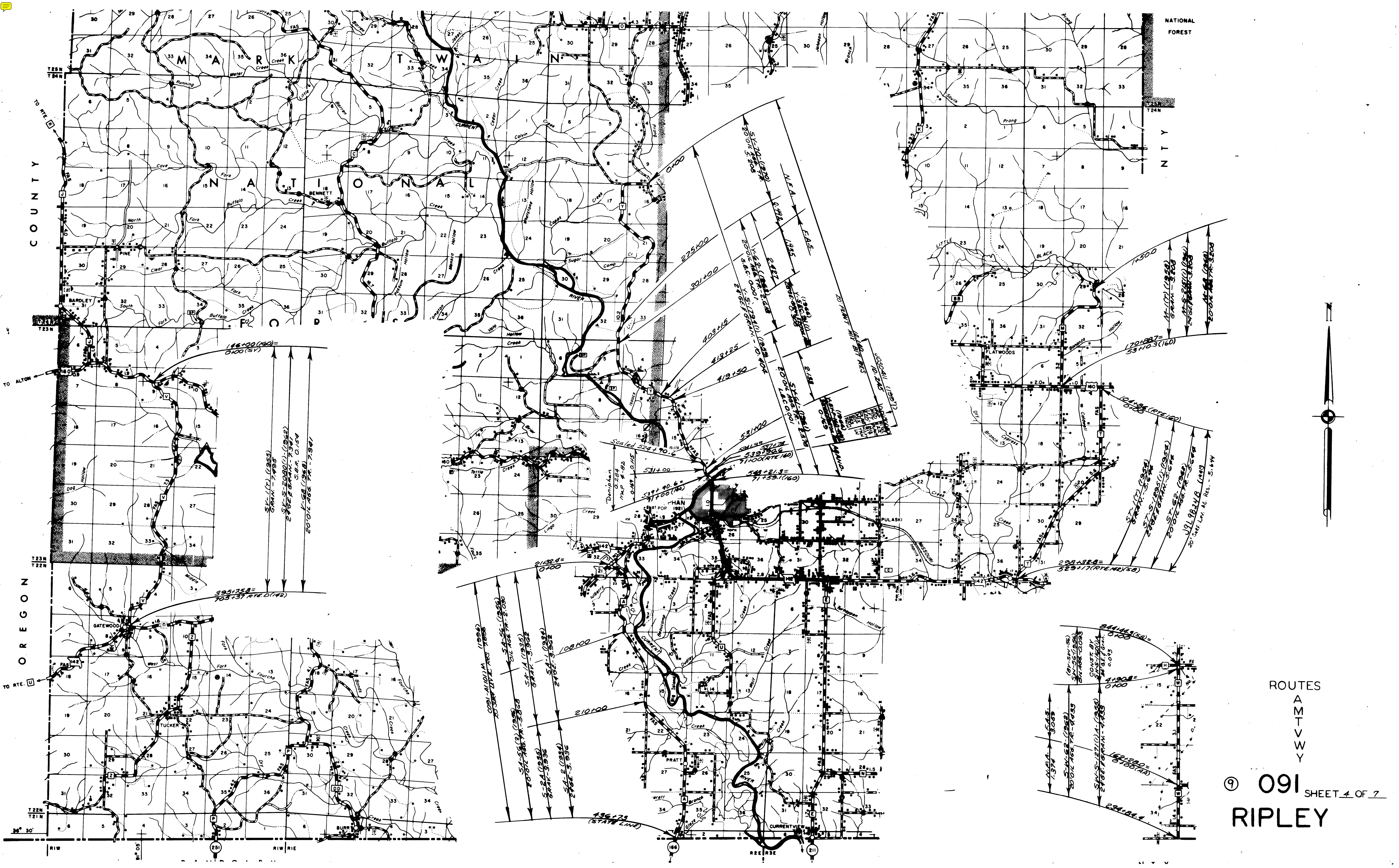
COUNTY

ADVANCAC



ROUTES - 160
JJ

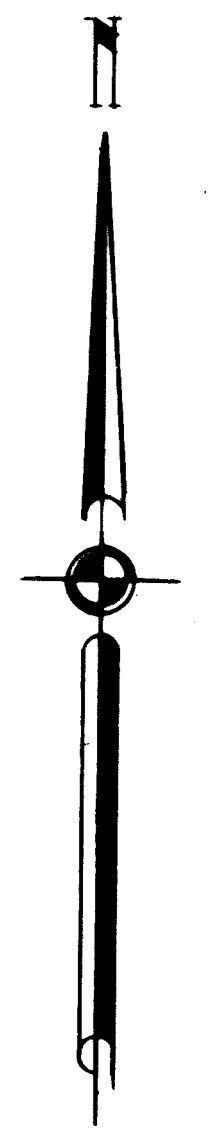
⑨ 091 SHEET 3 OF 7
RIPLEY



NATIONAL FOREST

COUNTY

OREGON



ROUTES
A
M
T
W
Y

⑨ 091 SHEET 4 OF 7
RIPLEY

186+00 (160) = 0100 (SV)

54+17 (1955)
GRAN-7-1955

54+5-5000 (1-1962)
2767-GRAN-7-1961
S.P.R. 0.154

2001466 TR-7-1941

3901258 = 705+37 RTE D(142)

0091-11(10) (1956)
COUNTY AC RES-7-1956

54+55 (1956)
54+55-GRAN-7-1956

54+1 (1955)
54+1-GRAN-7-1955

54+2 (1952)
54+2-GRAN-7-1952

54+3 (1952)
54+3-GRAN-7-1952

54+4 (1952)
54+4-GRAN-7-1952

54+5 (1952)
54+5-GRAN-7-1952

54+6 (1952)
54+6-GRAN-7-1952

54+7 (1952)
54+7-GRAN-7-1952

54+8 (1952)
54+8-GRAN-7-1952

54+9 (1952)
54+9-GRAN-7-1952

54+10 (1952)
54+10-GRAN-7-1952

54+11 (1952)
54+11-GRAN-7-1952

54+12 (1952)
54+12-GRAN-7-1952

54+13 (1952)
54+13-GRAN-7-1952

54+14 (1952)
54+14-GRAN-7-1952

54+15 (1952)
54+15-GRAN-7-1952

54+16 (1952)
54+16-GRAN-7-1952

54+17 (1952)
54+17-GRAN-7-1952

54+18 (1952)
54+18-GRAN-7-1952

54+19 (1952)
54+19-GRAN-7-1952

54+20 (1952)
54+20-GRAN-7-1952

54+21 (1952)
54+21-GRAN-7-1952

54+22 (1952)
54+22-GRAN-7-1952

54+23 (1952)
54+23-GRAN-7-1952

54+24 (1952)
54+24-GRAN-7-1952

54+25 (1952)
54+25-GRAN-7-1952

54+26 (1952)
54+26-GRAN-7-1952

54+27 (1952)
54+27-GRAN-7-1952

54+28 (1952)
54+28-GRAN-7-1952

54+29 (1952)
54+29-GRAN-7-1952

54+30 (1952)
54+30-GRAN-7-1952

54+31 (1952)
54+31-GRAN-7-1952

54+32 (1952)
54+32-GRAN-7-1952

54+33 (1952)
54+33-GRAN-7-1952

54+34 (1952)
54+34-GRAN-7-1952

54+35 (1952)
54+35-GRAN-7-1952

54+36 (1952)
54+36-GRAN-7-1952

54+37 (1952)
54+37-GRAN-7-1952

54+38 (1952)
54+38-GRAN-7-1952

54+39 (1952)
54+39-GRAN-7-1952

54+40 (1952)
54+40-GRAN-7-1952

54+41 (1952)
54+41-GRAN-7-1952

54+42 (1952)
54+42-GRAN-7-1952

54+43 (1952)
54+43-GRAN-7-1952

54+44 (1952)
54+44-GRAN-7-1952

54+45 (1952)
54+45-GRAN-7-1952

54+46 (1952)
54+46-GRAN-7-1952

54+47 (1952)
54+47-GRAN-7-1952

54+48 (1952)
54+48-GRAN-7-1952

54+49 (1952)
54+49-GRAN-7-1952

54+50 (1952)
54+50-GRAN-7-1952

54+51 (1952)
54+51-GRAN-7-1952

54+52 (1952)
54+52-GRAN-7-1952

54+53 (1952)
54+53-GRAN-7-1952

54+54 (1952)
54+54-GRAN-7-1952

54+55 (1952)
54+55-GRAN-7-1952

54+56 (1952)
54+56-GRAN-7-1952

54+57 (1952)
54+57-GRAN-7-1952

54+58 (1952)
54+58-GRAN-7-1952

54+59 (1952)
54+59-GRAN-7-1952

54+60 (1952)
54+60-GRAN-7-1952

54+61 (1952)
54+61-GRAN-7-1952

54+62 (1952)
54+62-GRAN-7-1952

54+63 (1952)
54+63-GRAN-7-1952

54+64 (1952)
54+64-GRAN-7-1952

54+65 (1952)
54+65-GRAN-7-1952

54+66 (1952)
54+66-GRAN-7-1952

54+67 (1952)
54+67-GRAN-7-1952

54+68 (1952)
54+68-GRAN-7-1952

54+69 (1952)
54+69-GRAN-7-1952

54+70 (1952)
54+70-GRAN-7-1952

54+71 (1952)
54+71-GRAN-7-1952

54+72 (1952)
54+72-GRAN-7-1952

54+73 (1952)
54+73-GRAN-7-1952

54+74 (1952)
54+74-GRAN-7-1952

54+75 (1952)
54+75-GRAN-7-1952

54+76 (1952)
54+76-GRAN-7-1952

54+77 (1952)
54+77-GRAN-7-1952

54+78 (1952)
54+78-GRAN-7-1952

54+79 (1952)
54+79-GRAN-7-1952

54+80 (1952)
54+80-GRAN-7-1952

54+81 (1952)
54+81-GRAN-7-1952

54+82 (1952)
54+82-GRAN-7-1952

54+83 (1952)
54+83-GRAN-7-1952

54+84 (1952)
54+84-GRAN-7-1952

54+85 (1952)
54+85-GRAN-7-1952

54+86 (1952)
54+86-GRAN-7-1952

54+87 (1952)
54+87-GRAN-7-1952

54+88 (1952)
54+88-GRAN-7-1952

54+89 (1952)
54+89-GRAN-7-1952

54+90 (1952)
54+90-GRAN-7-1952

54+91 (1952)
54+91-GRAN-7-1952

54+92 (1952)
54+92-GRAN-7-1952

54+93 (1952)
54+93-GRAN-7-1952

54+94 (1952)
54+94-GRAN-7-1952

54+95 (1952)
54+95-GRAN-7-1952

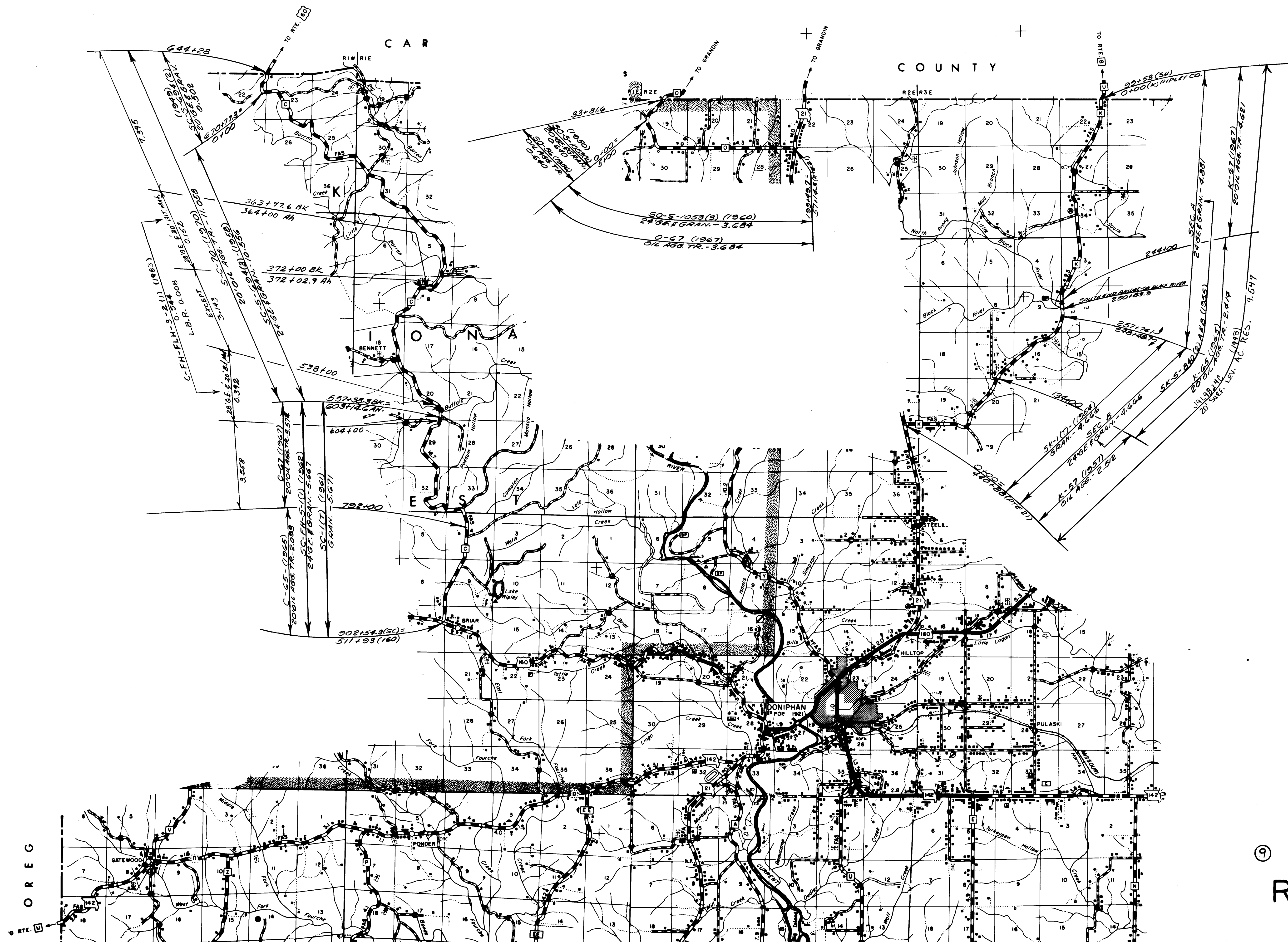
54+96 (1952)
54+96-GRAN-7-1952

54+97 (1952)
54+97-GRAN-7-1952

54+98 (1952)
54+98-GRAN-7-1952

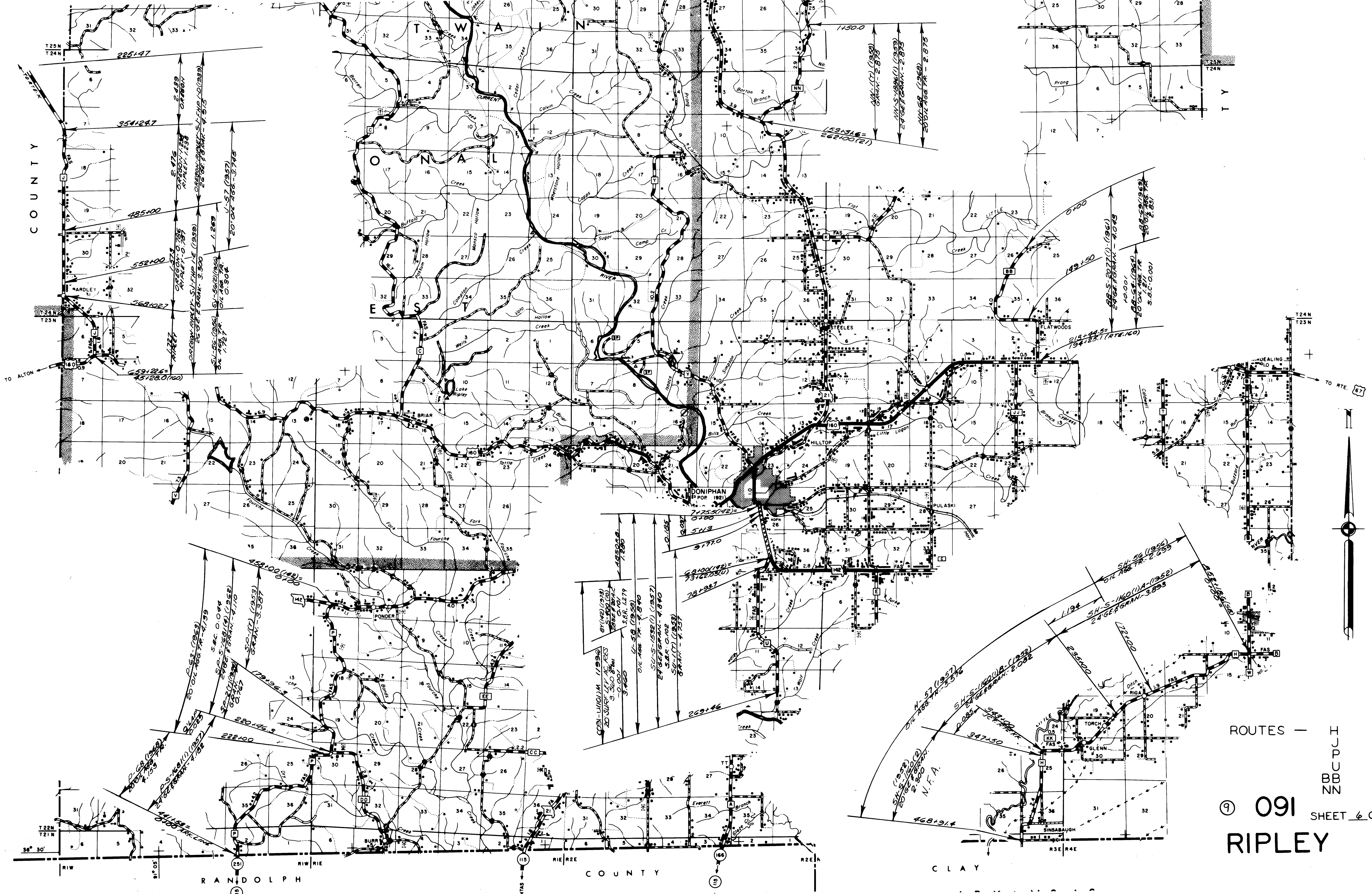
54+99 (1952)
54+99-GRAN-7-1952

54+100 (1952)
54+100-GRAN-7-1952



ROUTES -
OXC

⑨ 091 SHEET 5 OF 7
RIPLEY



COUNTY

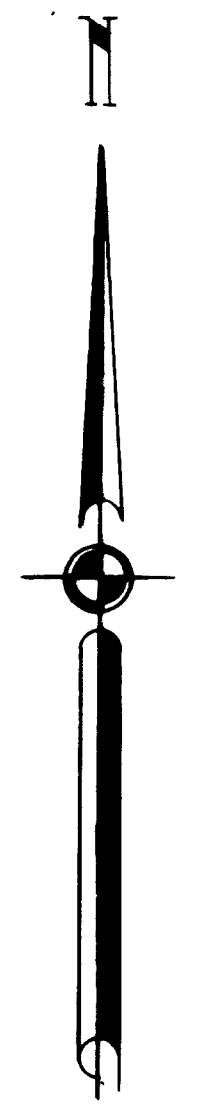
COUNTY

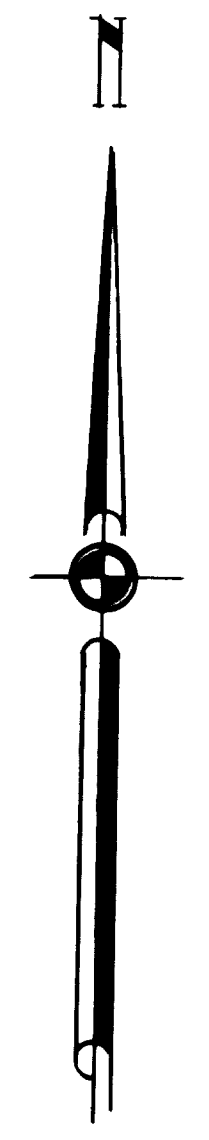
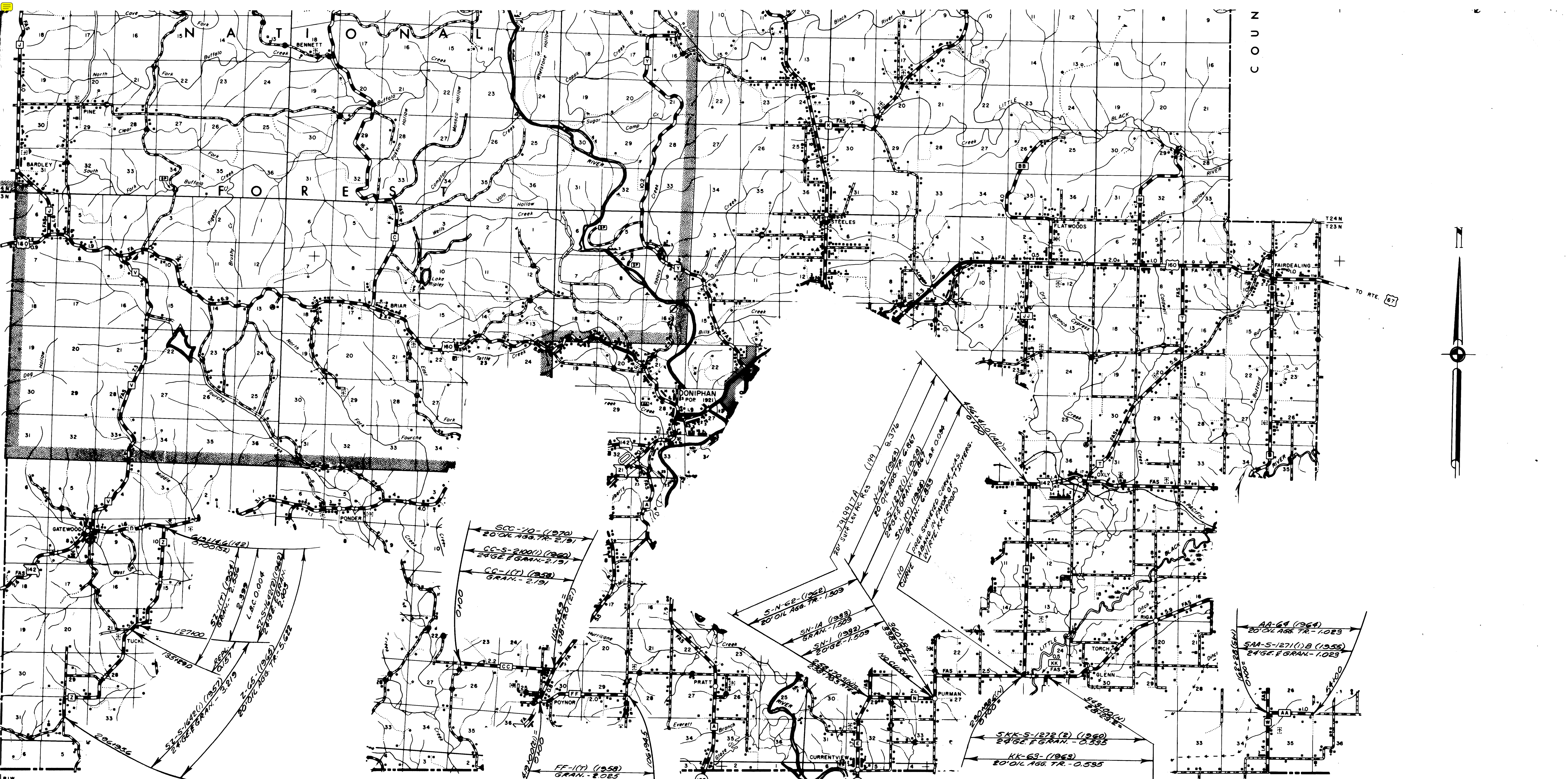
CLAY

RANDOLPH

ROUTES —
 T D C U I
 B B N N

⑨ 091 SHEET 6 OF 7
 RIPLEY





COUNTY ROUTES -

- N
- Z
- AA
- CC
- FF
- KK