

Part in Christian Co.  
 38 P.O. 6.17 (1995)  
 22' Bit. Mat. Res. 0.241  
 (1984)  
 Part in Christian Co.  
 C022-13(1) m sec A-9  
 22' Bit. Mat. Res. 0.170 0.071  
 F(13) C104-F(1) (1963)  
 22' Bit. Mat. Res. 0.241  
 SF-(13)-54 (1954)  
 Oil Agg. Tr. 0.241  
 SF-S-776(1) B (1947)  
 32' G.E. & Grav. 0.241

0200-0140  
 HURLEY (1955)  
 SCC-S-1303(1)  
 24' G.E. & Grav. 3.064  
 CC-64 (1964)  
 20' Oil Agg. Tr. 3.064

Part in Christian Co.  
 3850372B  
 147' G.E. only (1999)  
 J850372 3.678  
 24' P.C.G. (Part in Christian Co.)  
 S.B.R. 0.071

0104-160(2)-M (1979)  
 22' Bit. Mat. Res. 5.874  
 4.030  
 6.856 (Part in Christian & Taney Cos.)  
 C022-160(10) m Sec. A-C (1989)  
 20' Oil Agg. Tr. 1.407

0104-160(10) (1971)  
 22' Bit. Mat. Res. 6.856  
 C104-160(10) (1971)  
 22' Bit. Mat. Res. 4.030  
 US 160 Suppl. 4030  
 65-109-A & Grav. (1933)  
 22' Bit. Mat. Res. 3.874  
 65-109-B (1933)  
 22' Bit. Mat. Res. 3.874  
 S.B.R. 0.211

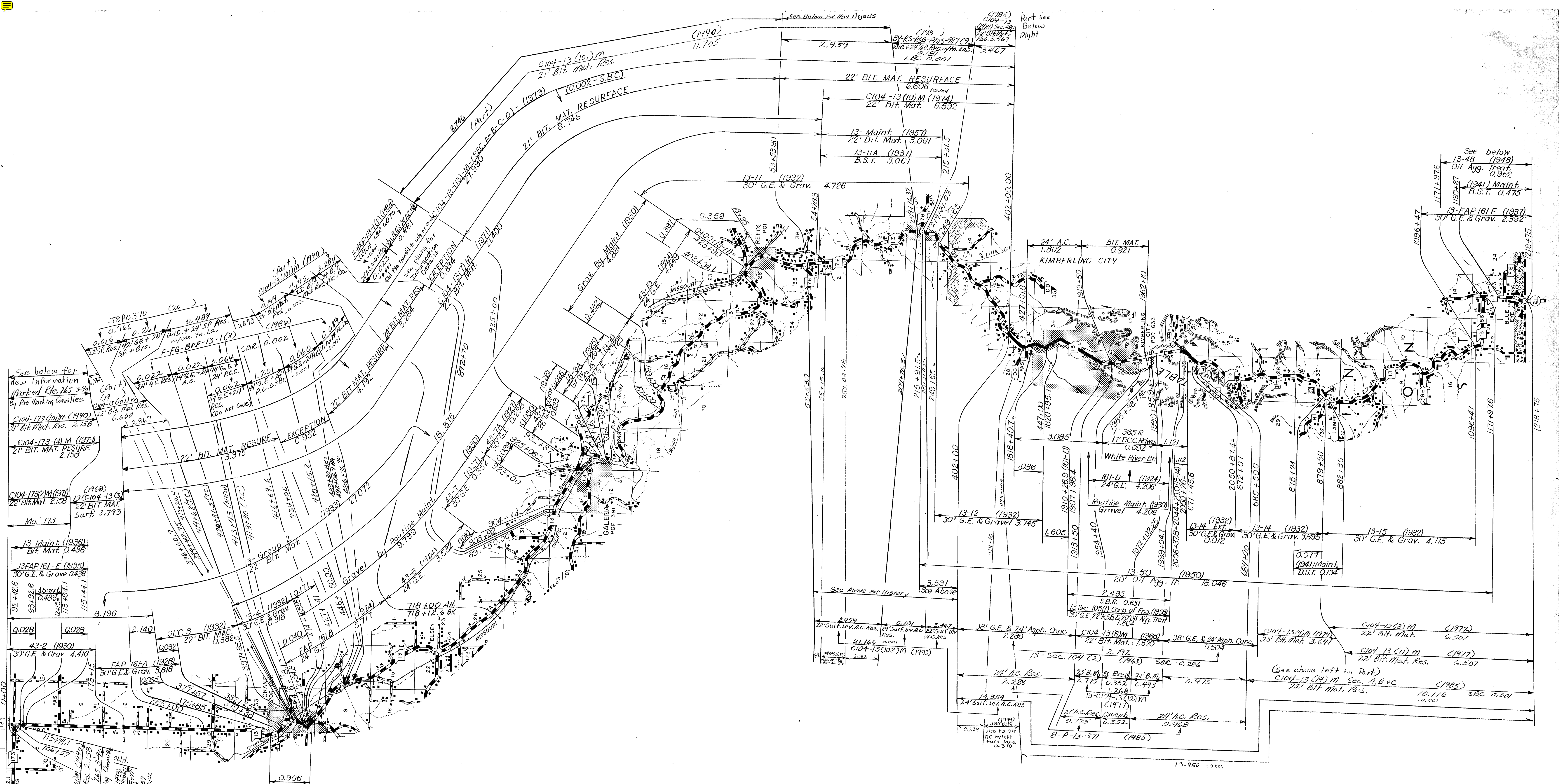
0000-0000 (1922)  
 20' G.E. 0.5451  
 3-109 (1925)  
 25' G.E. 3.550  
 S.B.R. 0.211  
 3-110 (1925)  
 20' G.E. 0.535  
 S.B.R. 0.010  
 26-362-110A (1925)  
 30' G.E. & Grav. 3.639  
 S.B.R. 0.112  
 65-110B (1933)  
 22' Bit. Mat. Res. 2.362  
 US 160 Primary 2.362

00-68 (1963)  
 20' Oil Agg. Tr. 1.538  
 1.451  
 2.859  
 148,000  
 00-PA-S-2152(2) (1972)  
 28' G.E. & 20' Grav. 1.407  
 00-MAINT. - (1974)  
 20' Oil Agg. Tr. 1.407  
 C104-00(10) m  
 22' Bit. Mat. Res.

# STONE COUNTY

ROUTES  
 13(PART), 160,  
 U, CC, & 00

SHEET / OF //

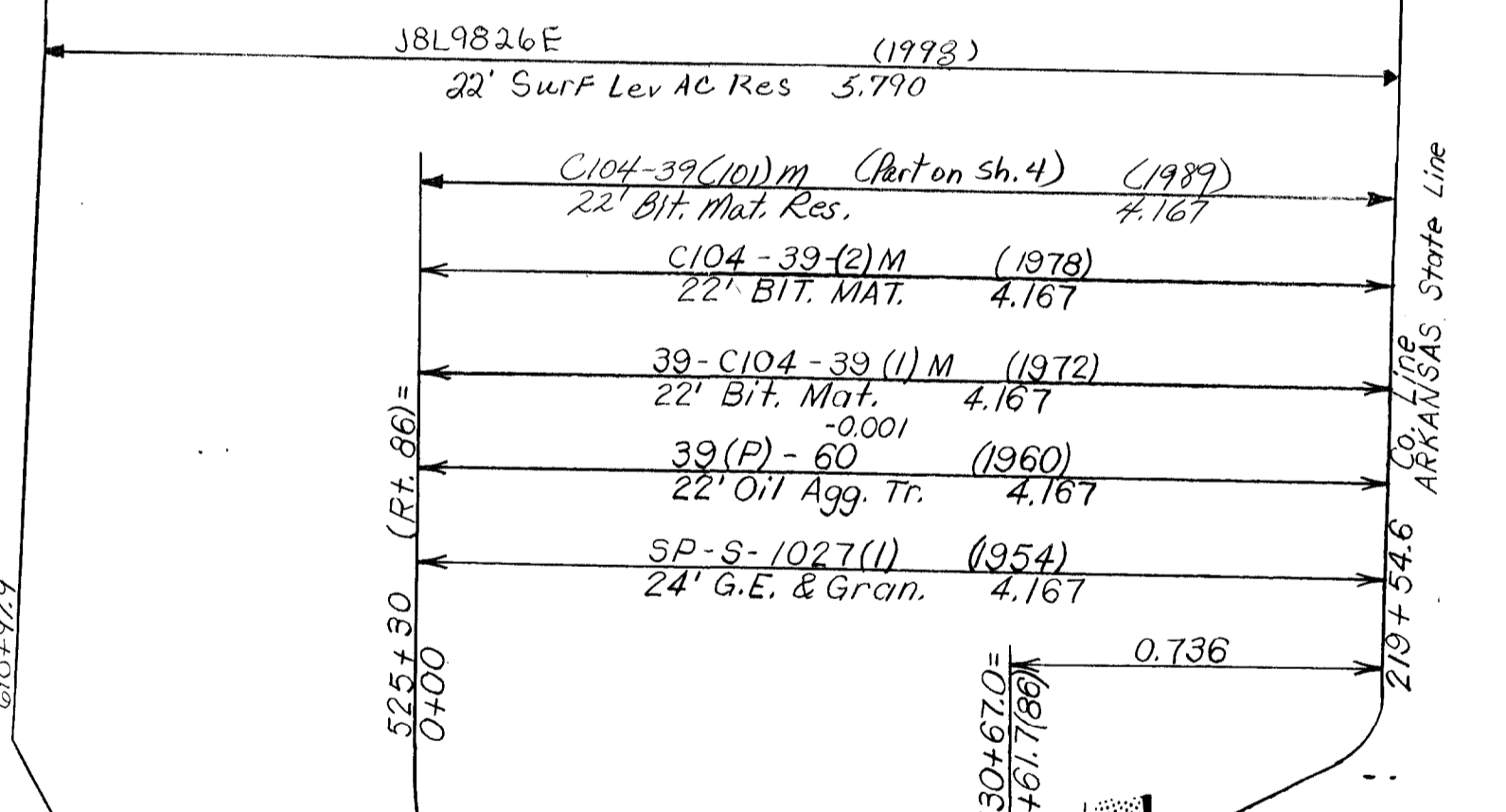
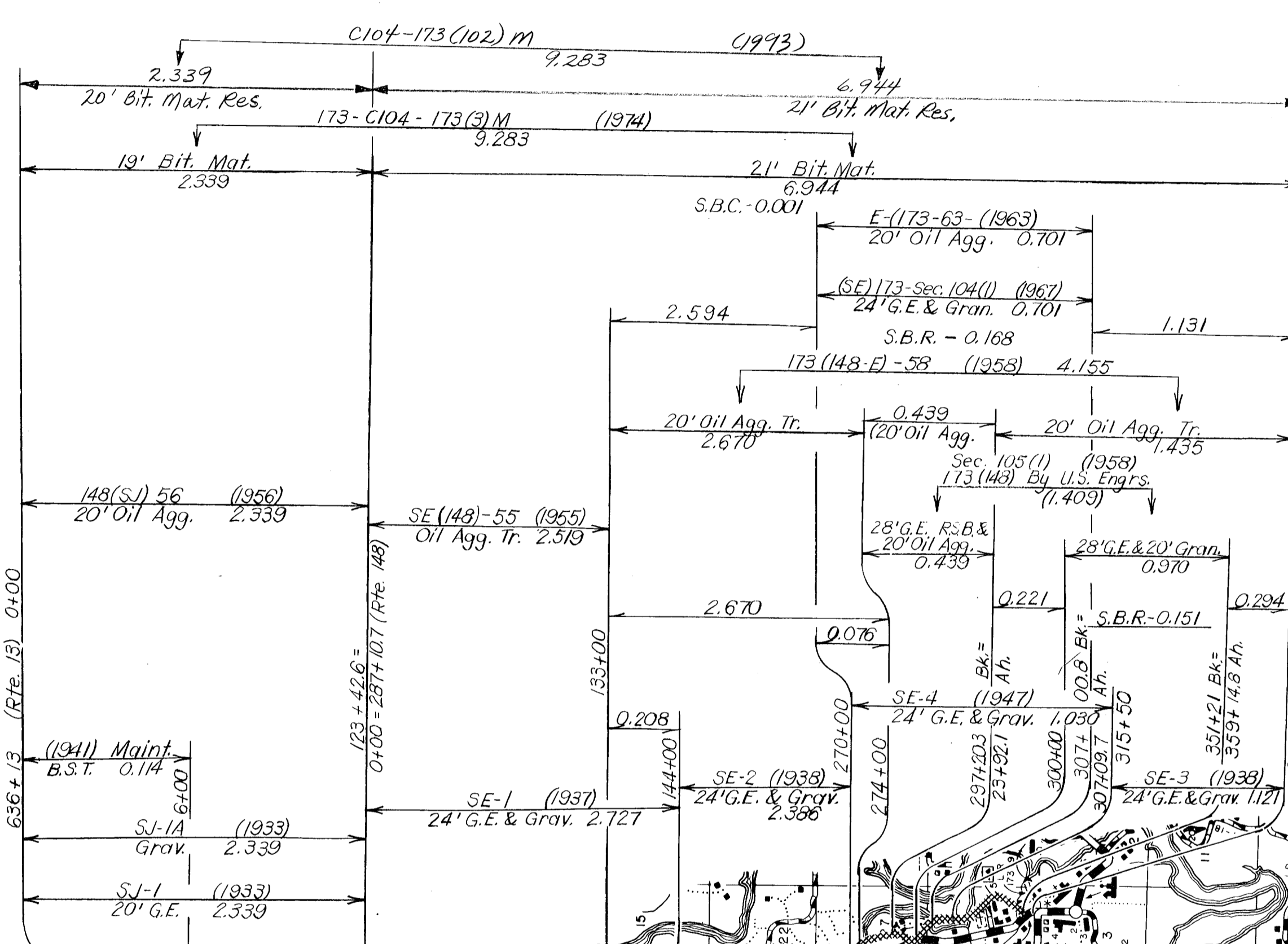
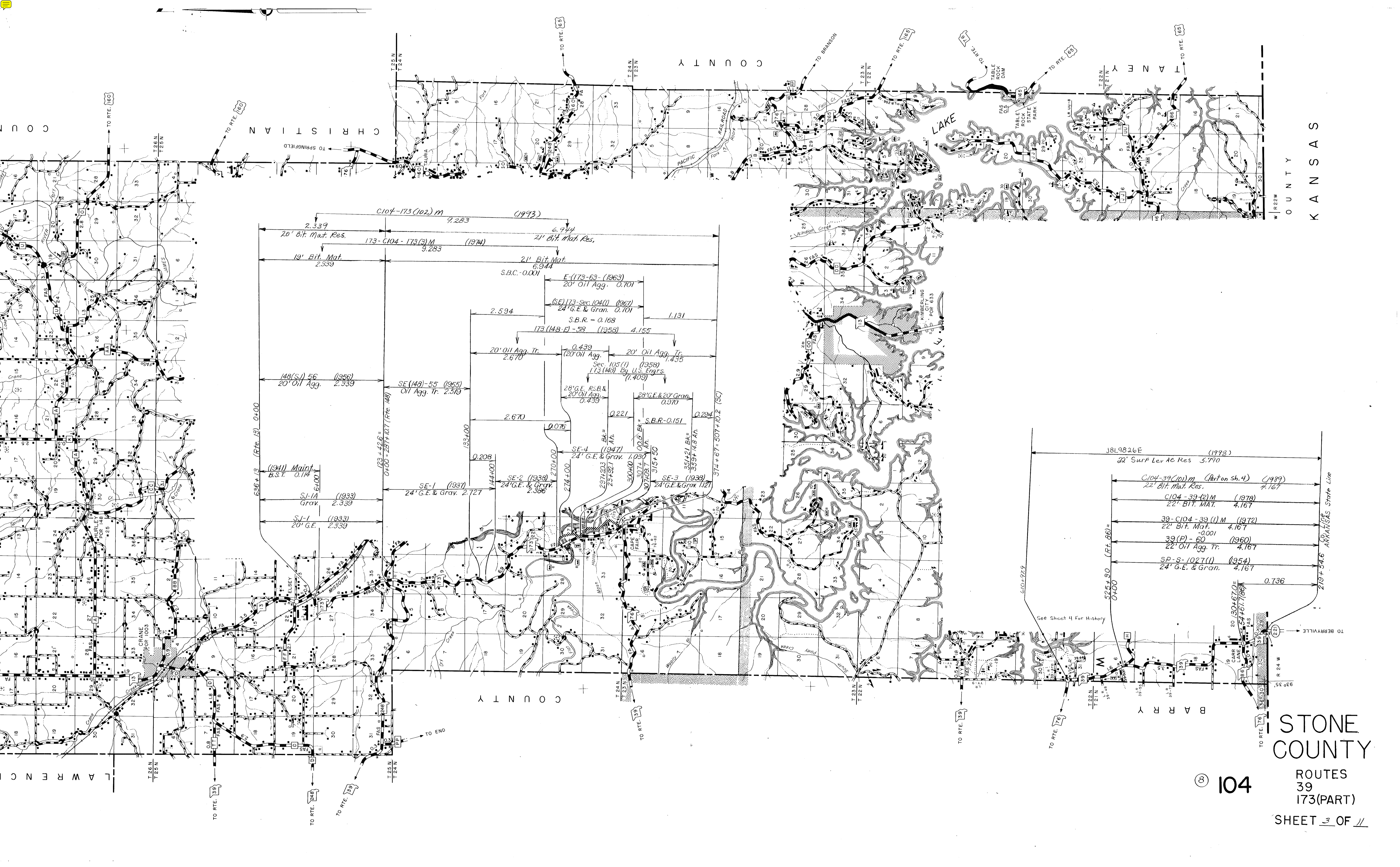


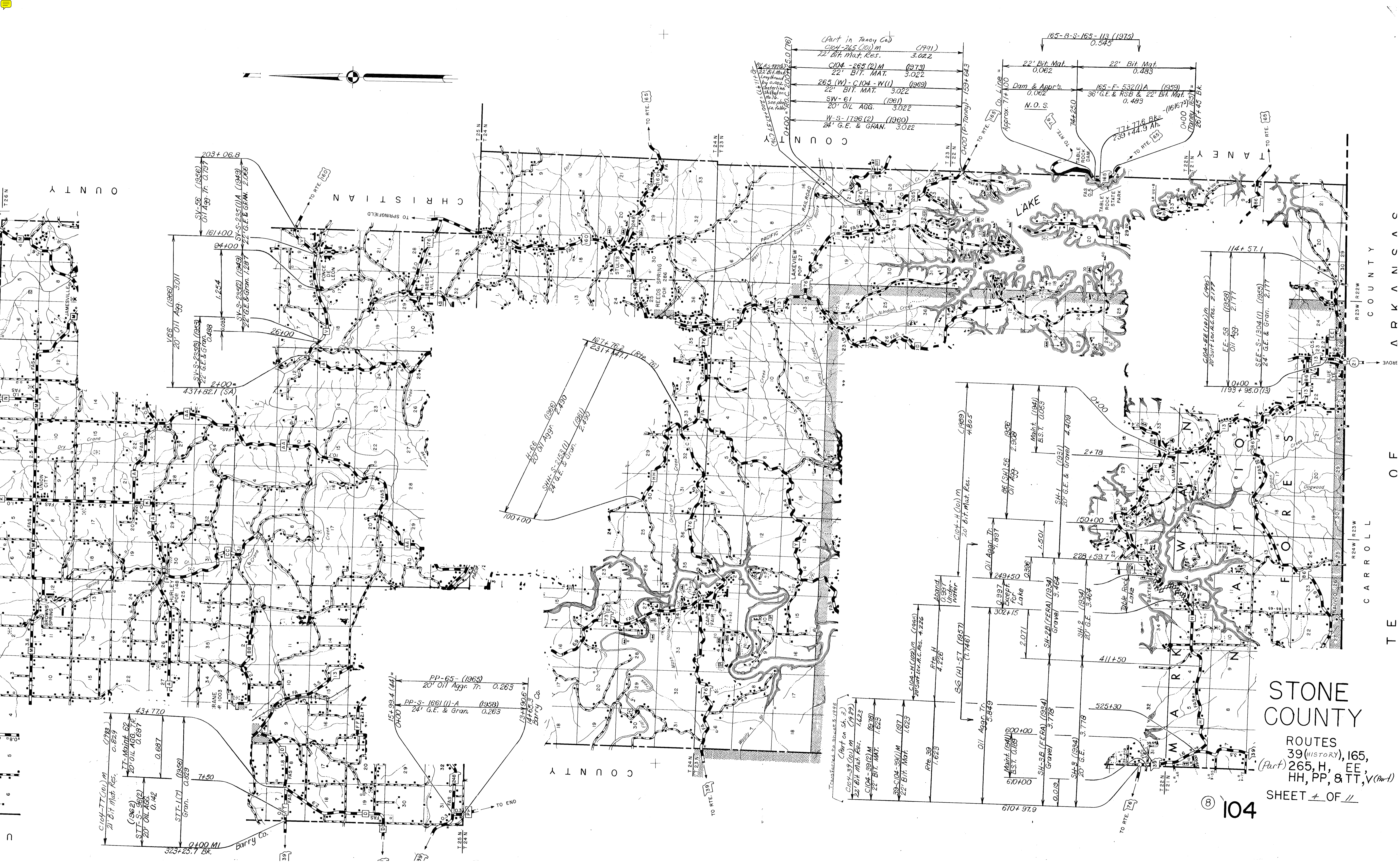
STONE COUNTY

⑧ 104

ROUTES  
13(PART)  
265(PART)

SHEET 2 OF 11





STONE COUNTY

CHRISTIAN COUNTY

STONE COUNTY

AR K A N S A S  
C A R R O L L C O U N T Y

# STONE COUNTY

ROUTES  
39 (HISTORY), 165,  
(Part) 265, H, EE,  
HH, PP, & TT, V (Part)

SHEET 4 OF 11

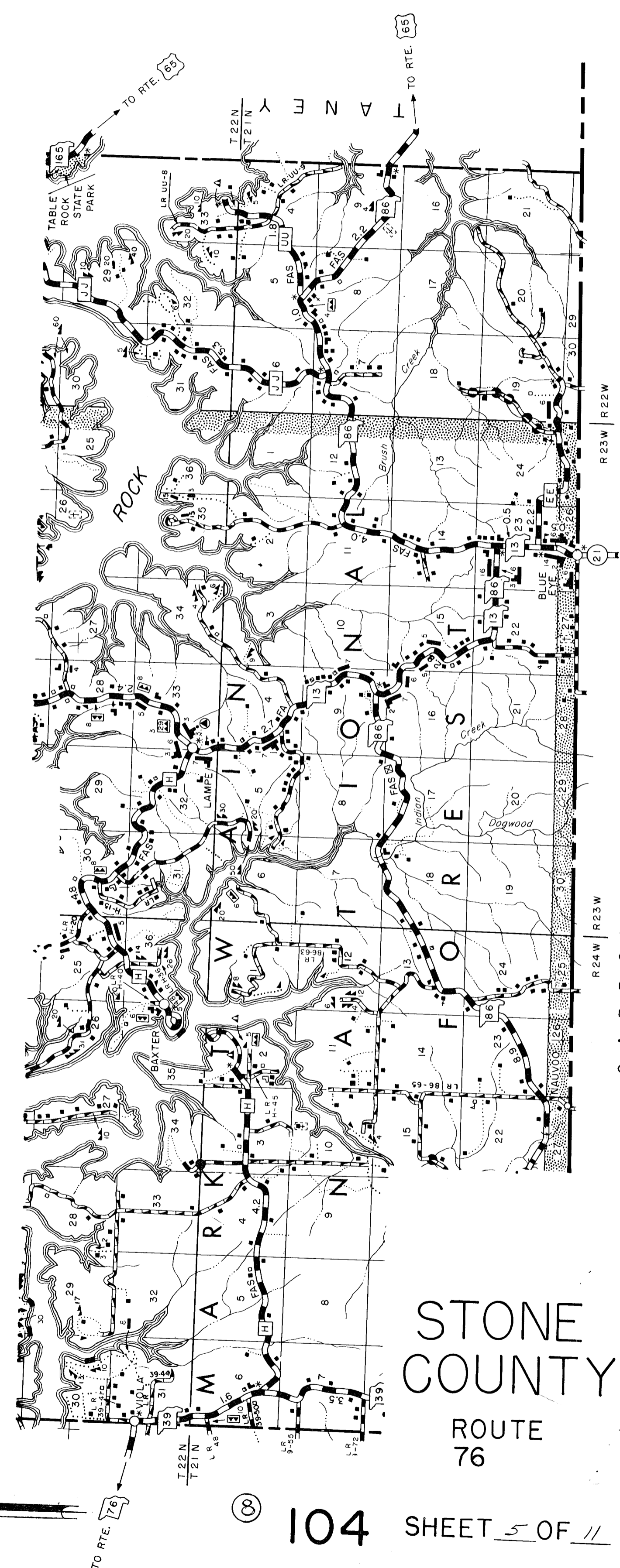
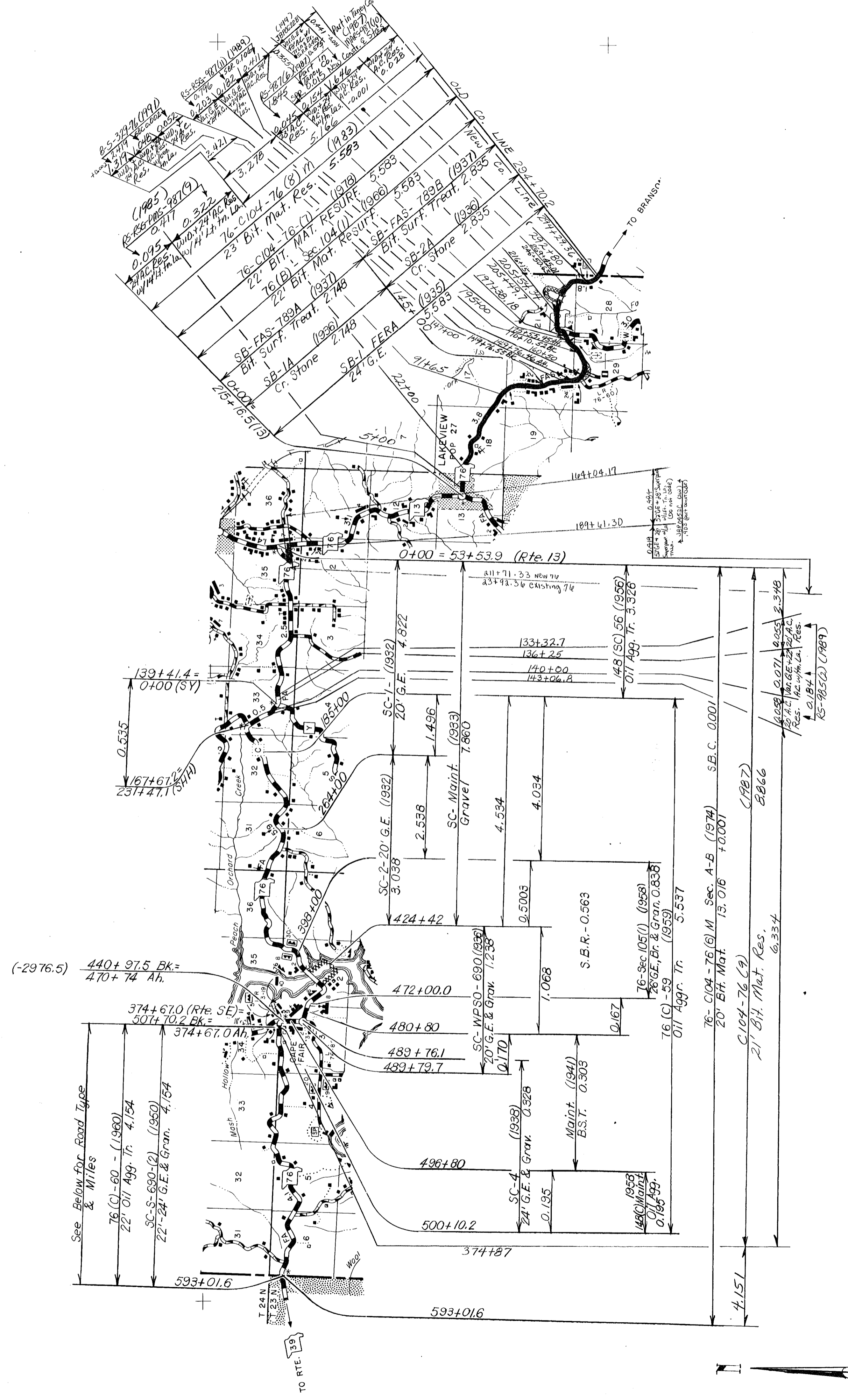
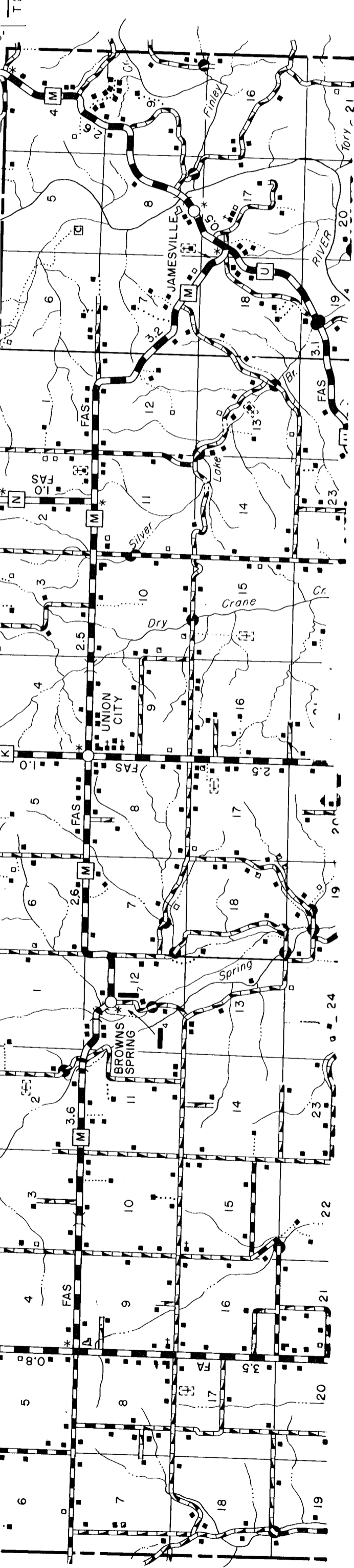
104

- Part in Taney Co.  
C104-265 (10) M (1991)  
22' Bit. Mat. Res. 3.022
- C104-265 (2) M (1973)  
22' BIT. MAT. 3.022
- 265 (W) - C104 - W (1) (1969)  
22' BIT. MAT. 3.022
- SW-61 (1961)  
20' OIL AGG. 3.022
- W-S-1796 (2) (1960)  
24' G.E. & GRAN. 3.022
- 165-8-S-165-113 (1975)  
0.545
- 22' Bit. Mat. 0.062
- 22' Bit. Mat. 0.483
- Dam & Appr's 0.062
- 165-F-532 (1) A (1959)  
36' G.E. & RSB & 22' Bit. Mat. 0.483
- N.O.S.
- 77+716 Bk. (161673)  
239+44.9 Ah.
- 0-100 (P-Taney) = 753+64.3

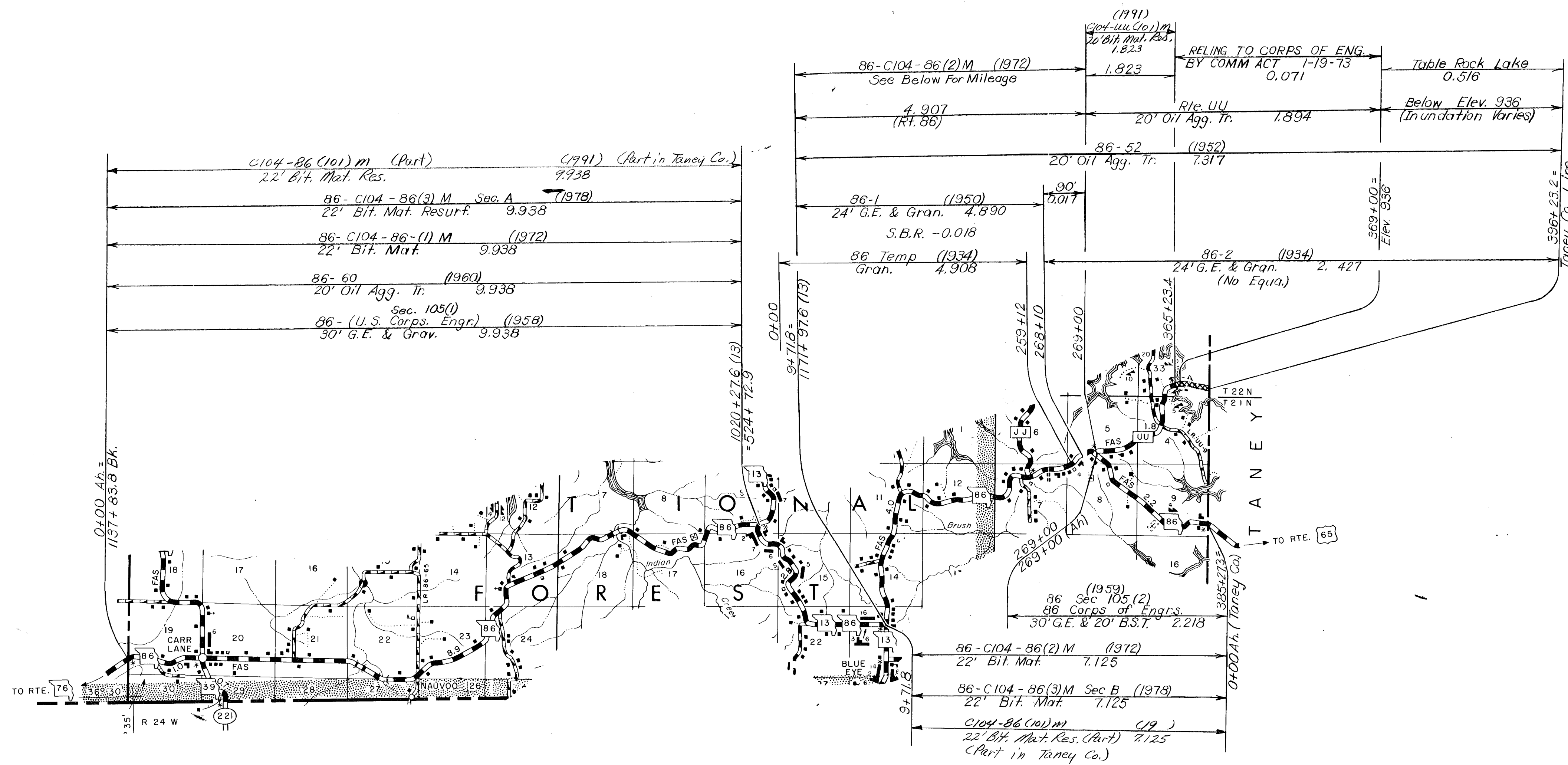
- 168 (1966)  
20' Oil Aggr. 3.011
- SV-S-235 (1963)  
22' G.E. & Gran. 0.488
- SV-S-235 (1949)  
22' G.E. & Gran. 1.287
- SV-S-235 (1) A (1949)  
22' G.E. & GRAN. 2.066
- 167+70.2 (Rte 76)  
231+47.1
- H-86 (1968)  
20' Oil Aggr. 2.490
- SVH-S-2153 (1) (1961)  
24' G.E. & GRAN. 2.490
- 100+00
- 168+06.8
- SV-S-56 (1956)  
Oil Aggr. Tr. 0.757
- 161+191
- 24+00
- 431+82.1 (SA)
- 26+00
- 1.254
- 0.033

- C104-39 (1989)  
22' Bit. Mat. Res. 0.829
- TT-Maint 62  
20' OIL AGG. Tr. 0.687
- S11-S-58 (1958)  
20' OIL AGG. 0.142
- 7+50
- STT-1 (1956)  
Gran. 0.829
- 323+25.7 Bk.
- 0+00 MI
- Barry Co.
- 15+99.4 (144)  
0+00
- PP-S-1661 (1) A (1958)  
24' G.E. & Gran. 0.263
- PP-65 (1965)  
20' Oil Aggr. Tr. 0.263
- 13+90.6 =  
1465.3  
Barry Co.
- 0.687
- 0.829
- 0.142
- 0.829
- 0.263
- 0.263
- 0.263

- Transferred to Sheets 1, 17 & 18
- C104-39 (10) M (1989)  
22' Bit. Mat. Res. 1.623
- C104-39 (2) M (1973)  
22' BIT. MAT. 1.623
- 39-C104-39 (1) M (1971)  
22' Bit. Mat. 1.623
- Rte. 39  
1.623
- 6104-97.9
- Oil Aggr. Tr. 5.849
- SG (H) 57 (1957)  
(1.746)
- Aband  
0.957  
Under-  
Water
- Rte. H  
4.226
- 6104-H (102) M (1992)  
20' SURF. A.C. RES. 4.226
- Oil Aggr. Tr. 1.997
- 249+50
- 0.997  
Excess  
for  
Lake
- 2.071
- SH-2B (FERA) (1934)  
Gravel 3.464
- SH-2 (1934)  
20' G.E. 3.464
- 411+50
- SH-1 (1931)  
20' G.E. & Gravel 4.409
- Maint. (1941)  
E.S.T. 0.053
- 86 (SH) 56  
Oil Aggr. 2.908
- 1.501
- 0.936
- 228+59.7
- 2+78
- 0+00
- 525+30
- 610+00
- Maint (1941)  
E.S.T. 0.108
- SH-5B (FERA) (1934)  
Gravel 3.718
- SH-5 (1934)  
20' G.E. 3.718
- 610+00
- 0.019
- 2.071
- 2.908
- 4.409
- 4.409
- 4.409
- 3.718
- 3.718

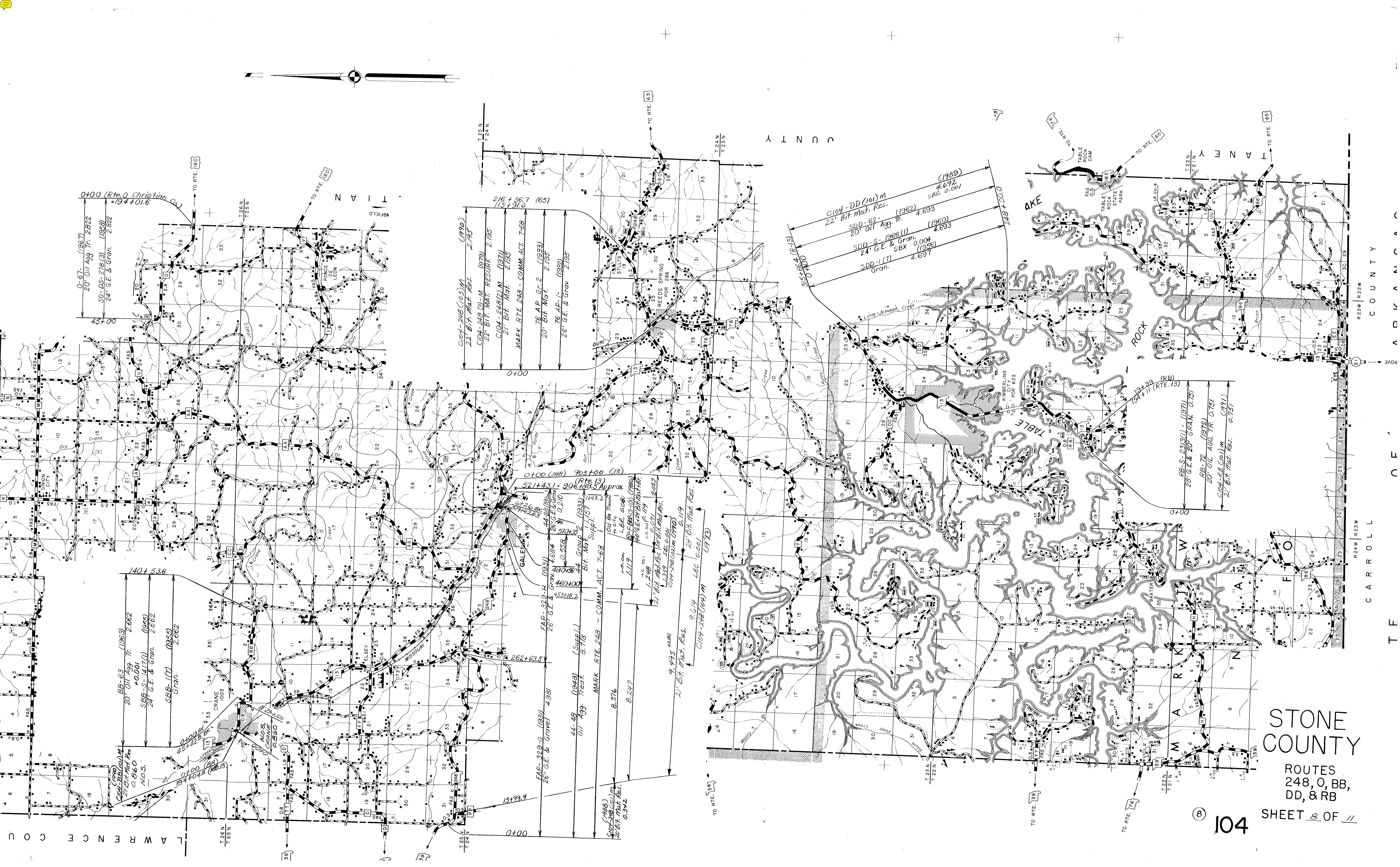


STONE COUNTY ROUTE 76



STONE COUNTY  
 ROUTES  
 86, & UU





0+00 (Rte. O Christian Co.)  
 194+01.6  
 0-67- (1967)  
 20' Oil Agg. Tr. 2.822  
 50-DS-278(3) (1958)  
 24' G.E. & Gran. 2.852

140+53.6  
 BB-63 (1963)  
 20' Oil Agg. Tr. 2.662  
 +0.001  
 SBB-S-141(1) (1955)  
 24' G.E. & Gran. 2.662  
 SBB-177 (1955)  
 Gran. 2.662

216+36.7 (65)  
 187+31.6  
 C104-248 (103) M (1990)  
 22' Bit. Mat. Res. 2.795  
 C104-248 (9) M (1979)  
 22' Bit. Mat. Resurf. 2.795  
 C104-248(2) M (1971)  
 21' Bit. Mat. 2.795  
 MARK. RTE. 248 - COMM. ACT. 7-68  
 76 AP. Gr. 2 (1933)  
 20' Bit. Mat. 2.795  
 76 AP-1- (1932)  
 26' G.E. & Grav. 2.795

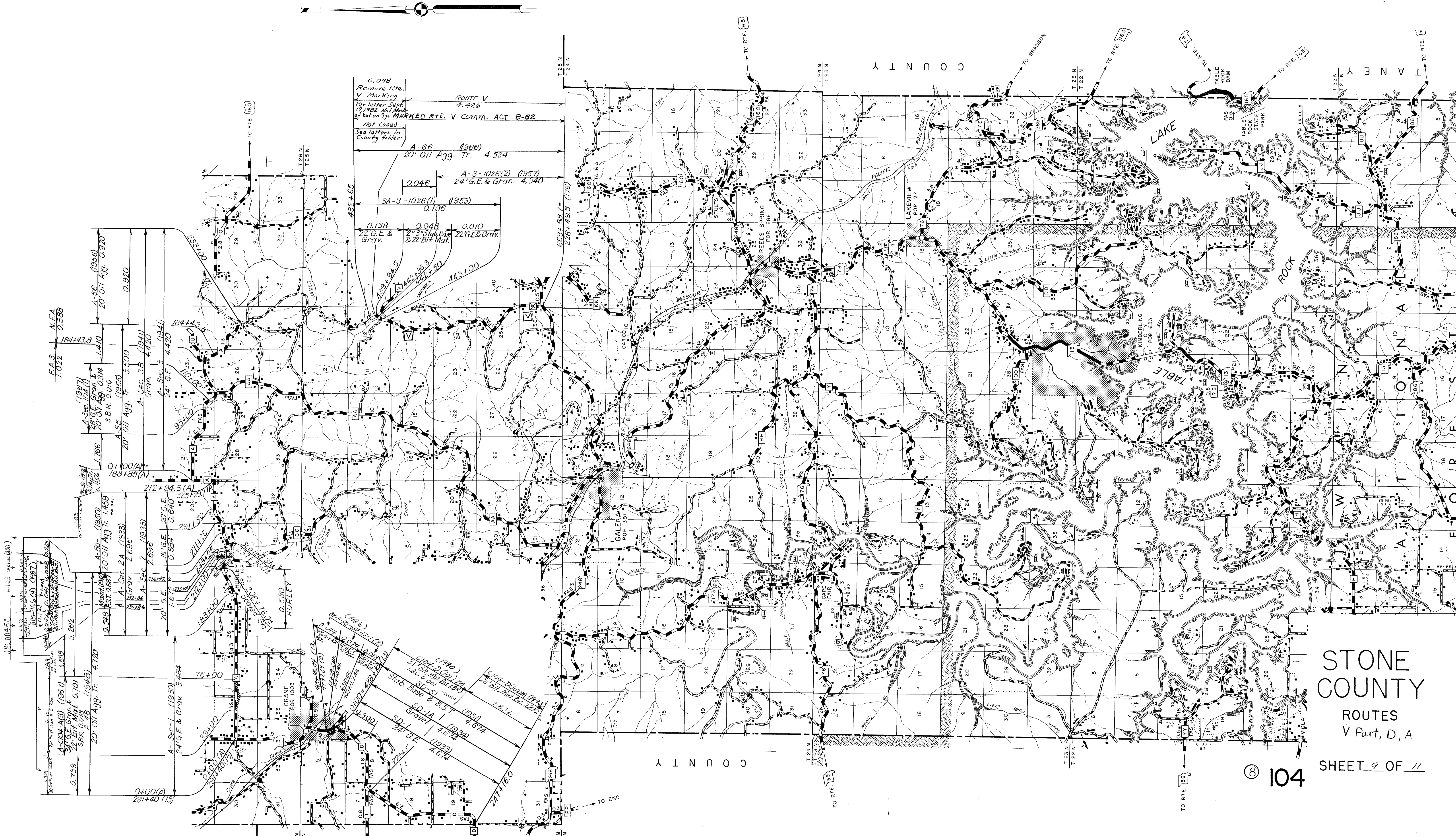
521+43.1 = 206+58.5 Approx.  
 (Rte. 13)  
 510+39.2  
 460+00  
 453+18.2  
 FAP-329-H (1931)  
 26' G.E. & Grav. 4.381  
 44-48 (1943)  
 Oil Agg. Treat. 8.718  
 MARK. RTE. 248 - COMM. ACT. 7-68  
 8.376  
 8.247  
 9.495 +0.001  
 21' Bit. Mat. Res. 8.114  
 LBC 0.001  
 C104-248 (104) M (1992)

315+84 (R-13)  
 0+00  
 243+00.0  
 C104-DD (101) M  
 22' Bit. Mat. Res. (1989)  
 4.692  
 SBE 0.001  
 SDD-62- (1962)  
 20' Oil Agg. Tr. 4.693  
 SDD-S-1968(1) (1960)  
 24' G.E. & Gran. 0.004  
 SBE 4.693  
 SDD-1(7) (1955)  
 Gran. 4.697

0+00  
 54+11 (RTE. 13) (RB)  
 68-S-23(3) (1971)  
 28' G.E. & 20' GRAN. 0.751  
 68-78 (1978)  
 20' OIL AGG. TR. 0.751  
 C104-248 (101) M (1991)  
 21' Bit. Mat. Res. 0.751

STONE COUNTY  
 ROUTES  
 248, O, BB,  
 DD, & RB  
 SHEET 8 OF 11





F.A.S. 1.022 N.F.A. 0.339

0.098 Remove Rte. V Marking  
Per letter Sept. 17, 1982 161 Mark  
is out on Sp. MARKED R+E. V COMM. ACT 8-82  
Not Codad  
See letters in County folder

ROUTE V  
7.426

A-66 (1966)  
20' Oil Agg. Tr. 4.524

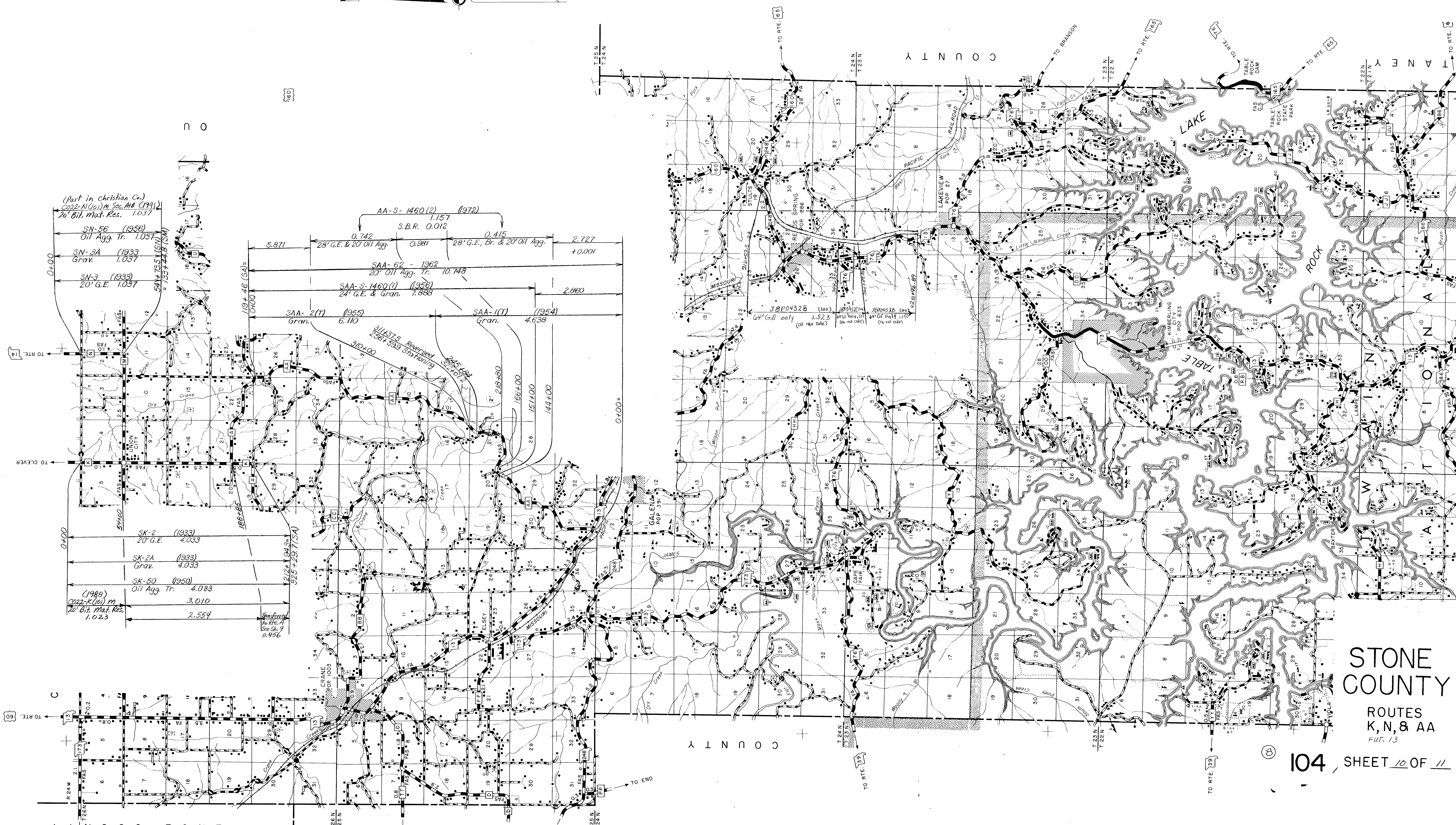
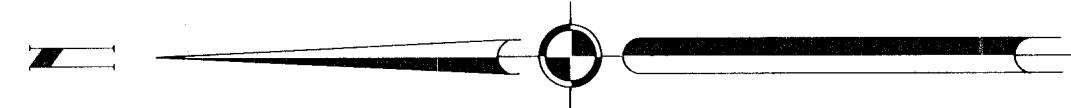
A-S-1026(2) (1957)  
24' G.E. & Gran. 4.340

SA-S-1026(1) (1953)  
0.196

0.138 22' G.E. & Grav.  
0.048 21' 3" Stab. Base & 22' Bit Mat.  
0.010 22' G.E. & Grav.

432+65  
439+91.5  
442+36.8  
442+50  
443+00

STONE COUNTY  
ROUTES  
V Part, D, A



(Part in Christian Co.)  
2022-N(001) m Sec. A10 (1991)  
20' Bif. Mat. Res. 1.037

SN-56 (1956)	Oil Agg. Tr.	1.037
SN-3A (1933)	Grav.	1.037
SN-3 (1933)	20' G.E.	1.037

5447.735 (SN)  
= 1.337778 (SM)

AA-S-1460(2) (1972)  
S.B.R. 0.012

0.742	28' G.E. & 20' Oil Agg.
0.981	28' G.E., Br. & 20' Oil Agg.
0.415	28' G.E., Br. & 20' Oil Agg.
2.727	+0.001

SAA-62 - 1962  
20' Oil Agg. Tr. 10.748

SAA-S-1460(1) (1958)  
24' G.E. & Gran. 1.888

SAA-2(T) (1955)  
Gran. 6.110

SAA-1(T) (1954)  
Gran. 4.638

SK-2 (1933)  
20' G.E. 4.033

SK-2A (1933)  
Grav. 4.033

SK-50 (1950)  
Oil Agg. Tr. 4.083

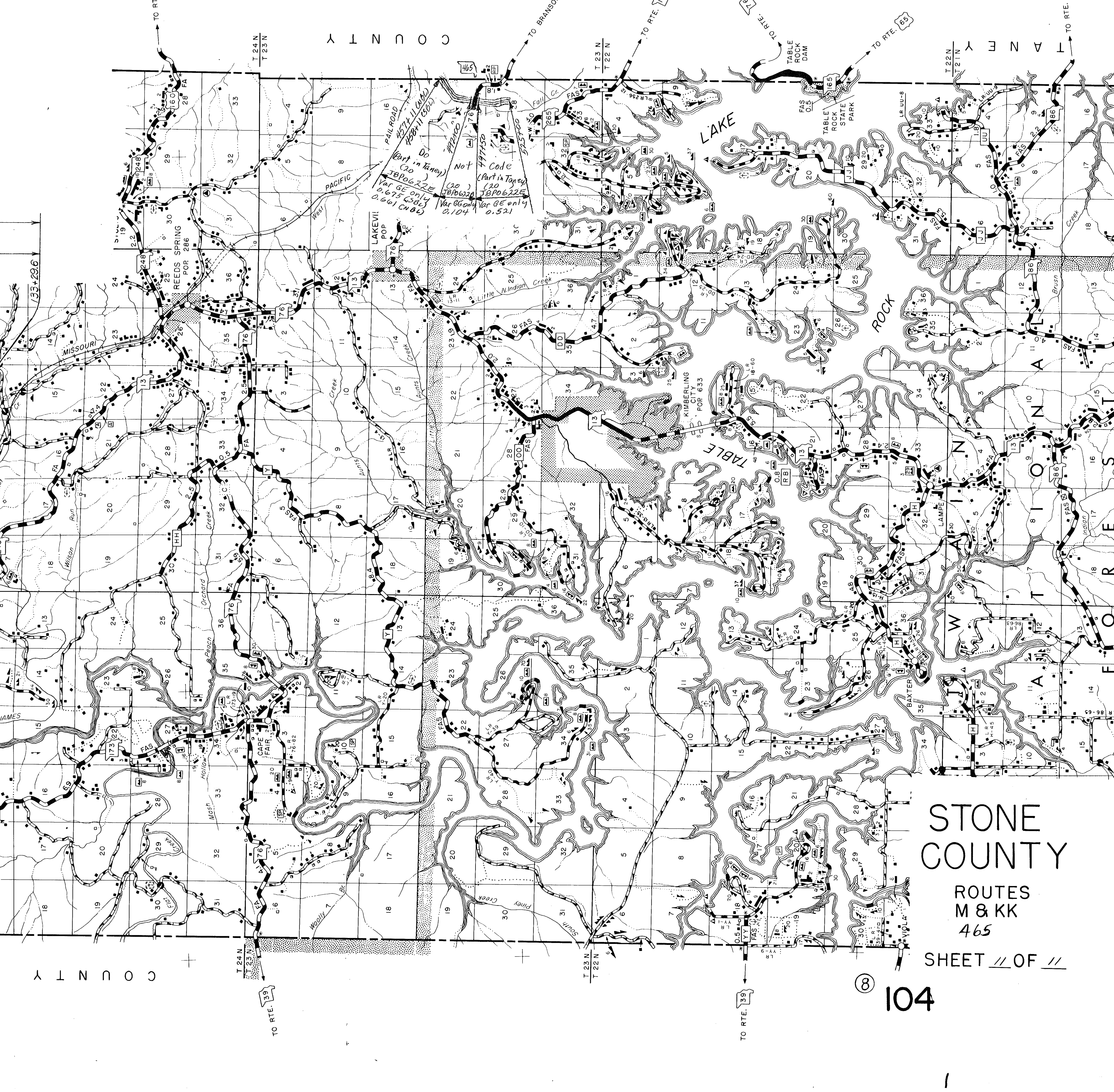
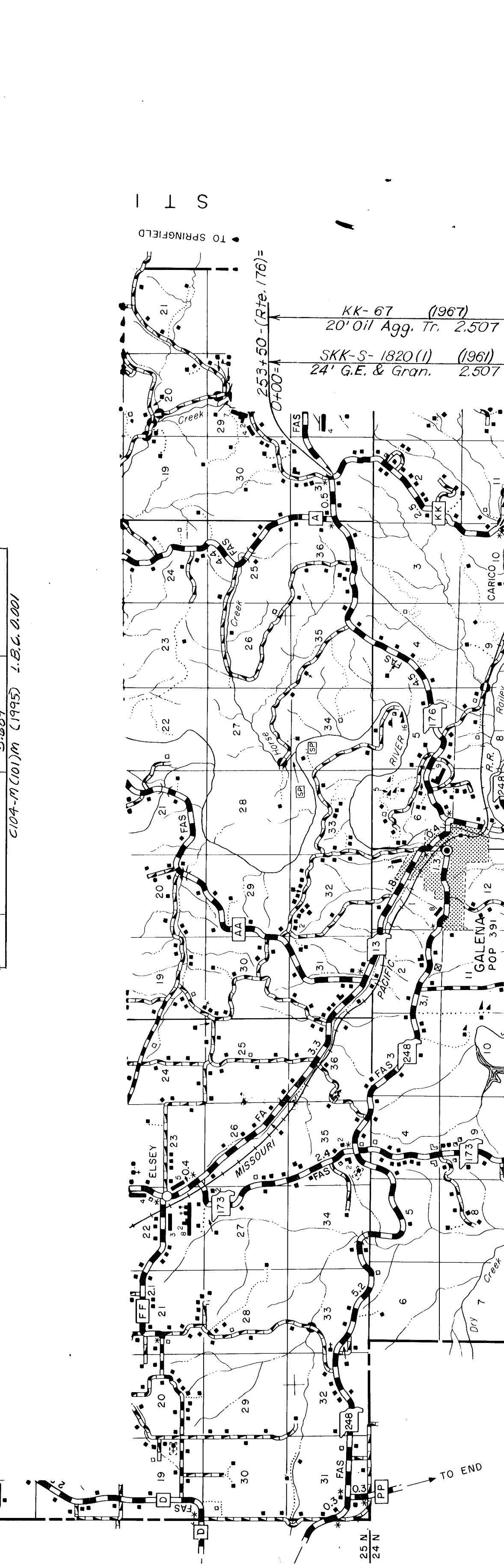
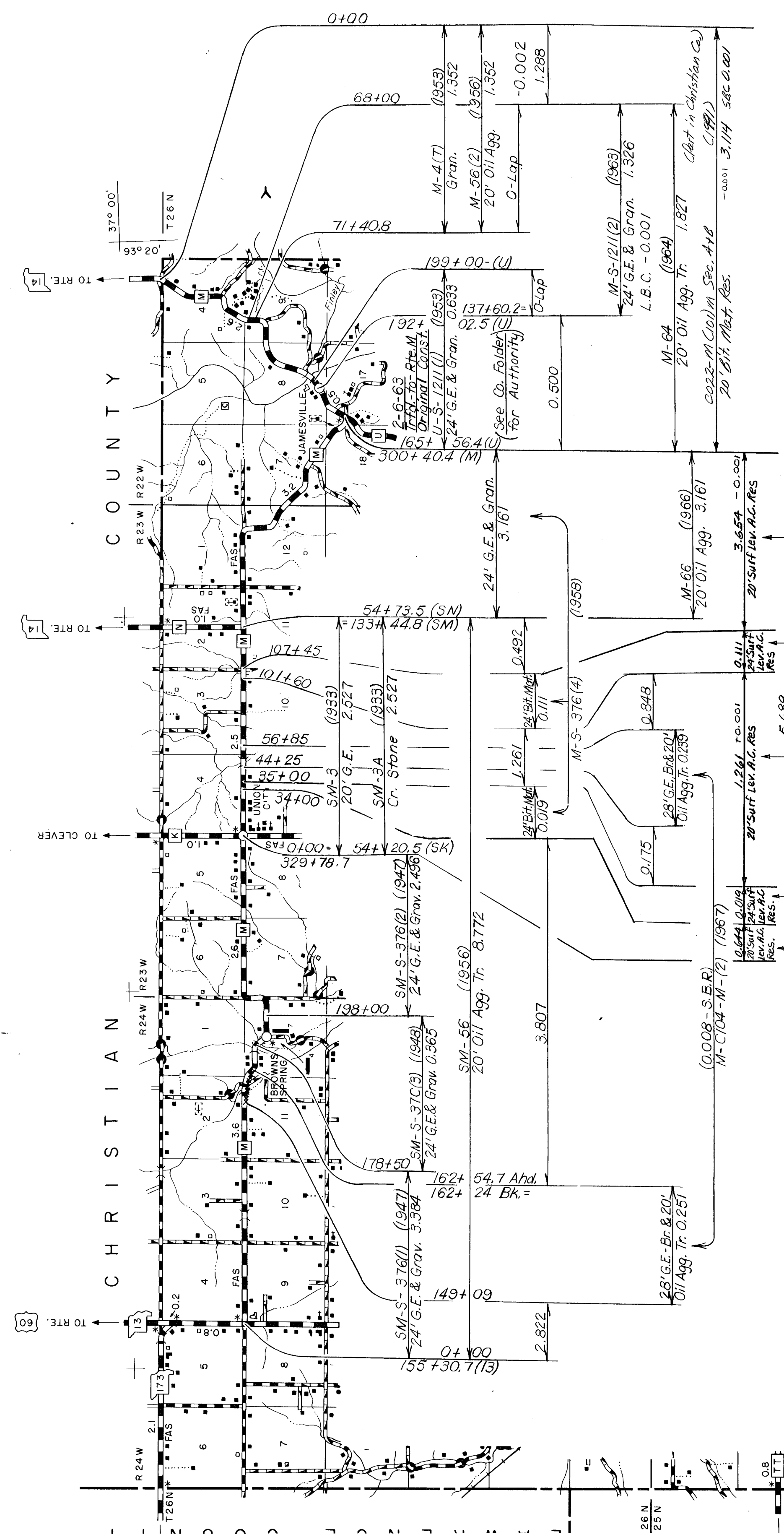
(1988)  
2022-K(001) m  
20' Bif. Mat. Res. 1.023

3.010
2.554

Referred to Res. A  
Res. 9  
0.456

STONE  
COUNTY

ROUTES  
K, N, & AA  
FUT. 13



STONE COUNTY

ROUTES  
M & KK  
465

SHEET // OF //