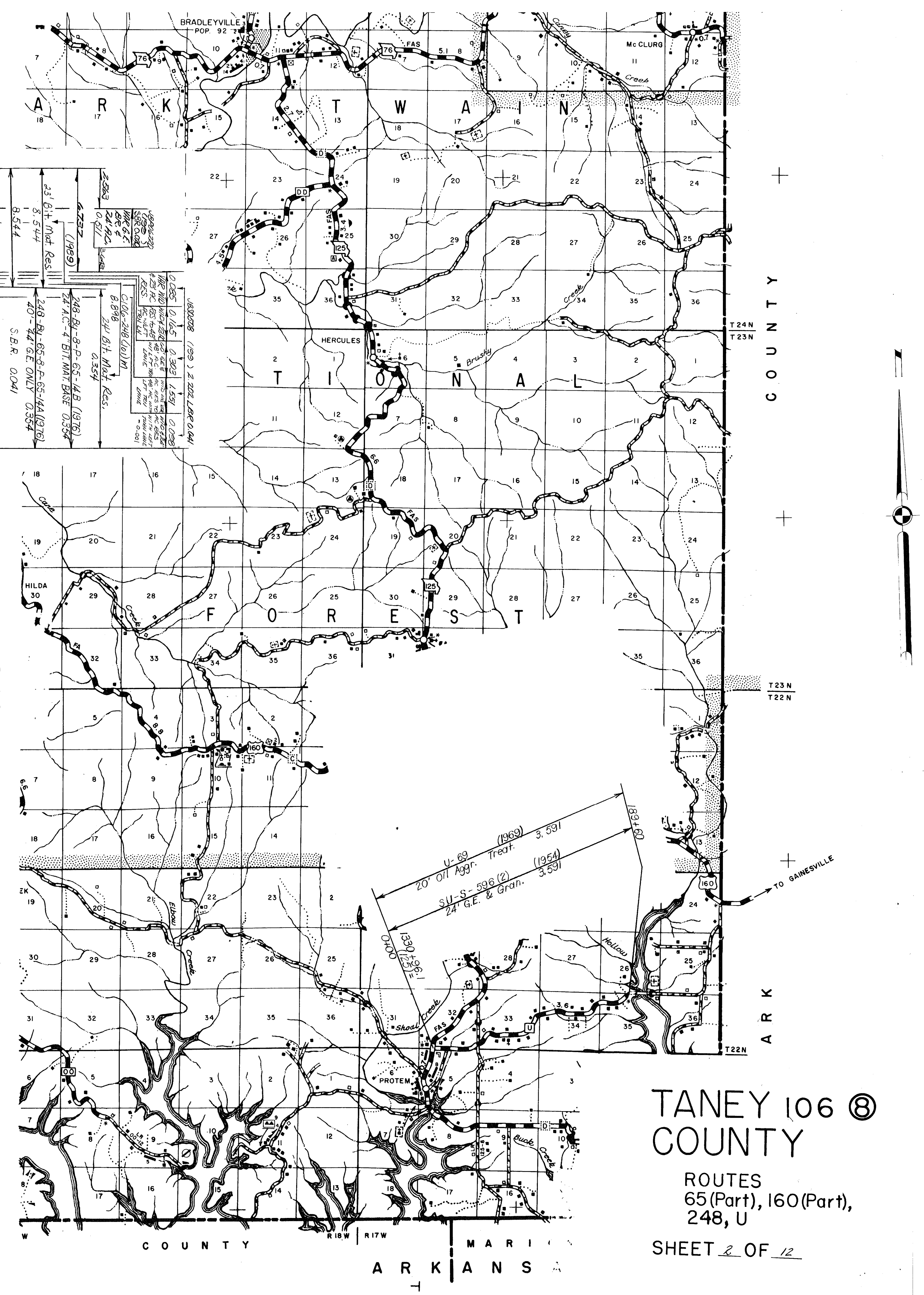
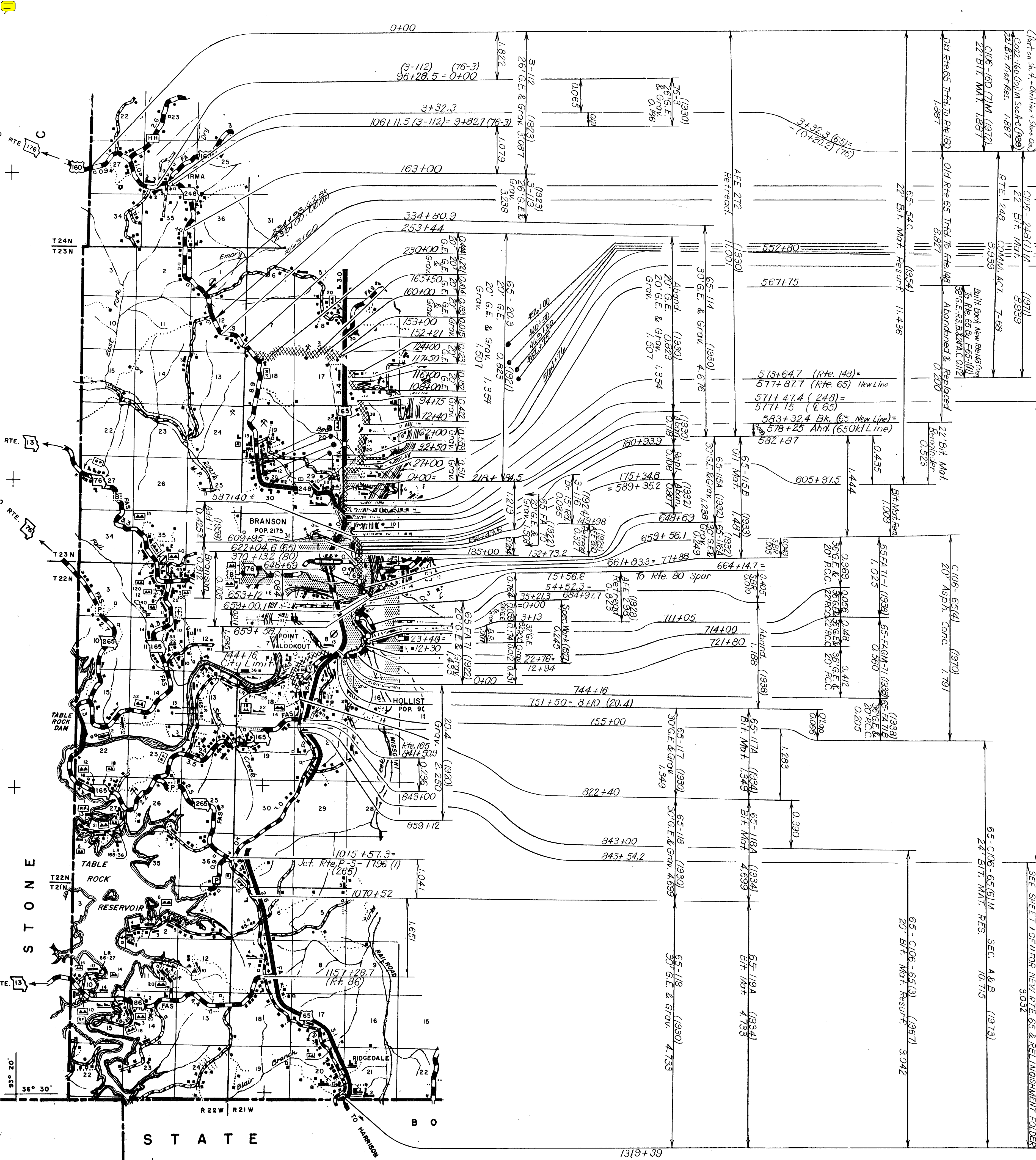


106 ⑧  
 TANEY  
 COUNTY  
 ROUTE  
 65 (Part)



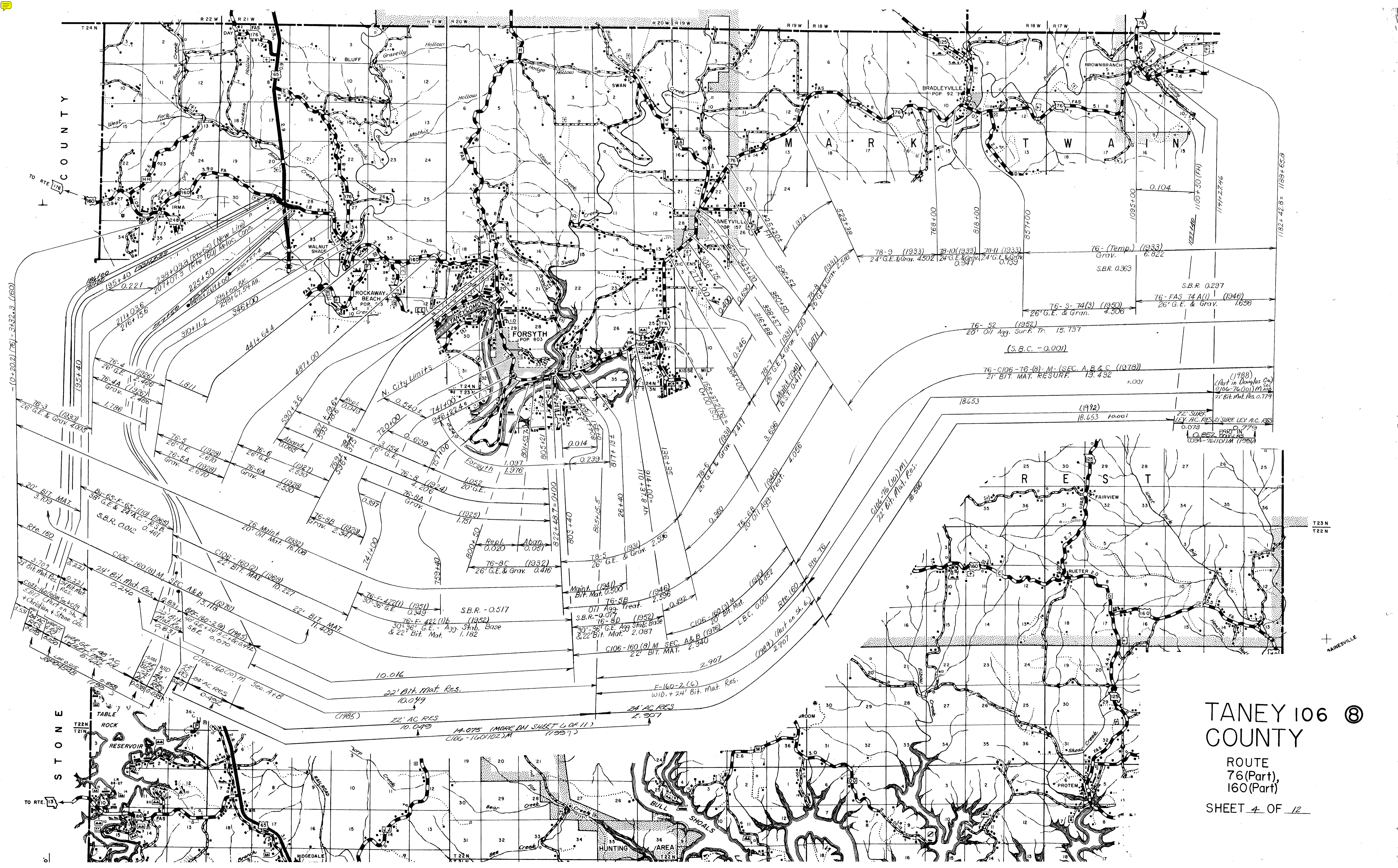


TANEY 106 @  
 COUNTY  
 ROUTES  
 65(Part), 160(Part),  
 248, U  
 SHEET 2 OF 12









TANEY 106 ⑧  
 COUNTY  
 ROUTE  
 76(Part),  
 160(Part)  
 SHEET 4 OF 12

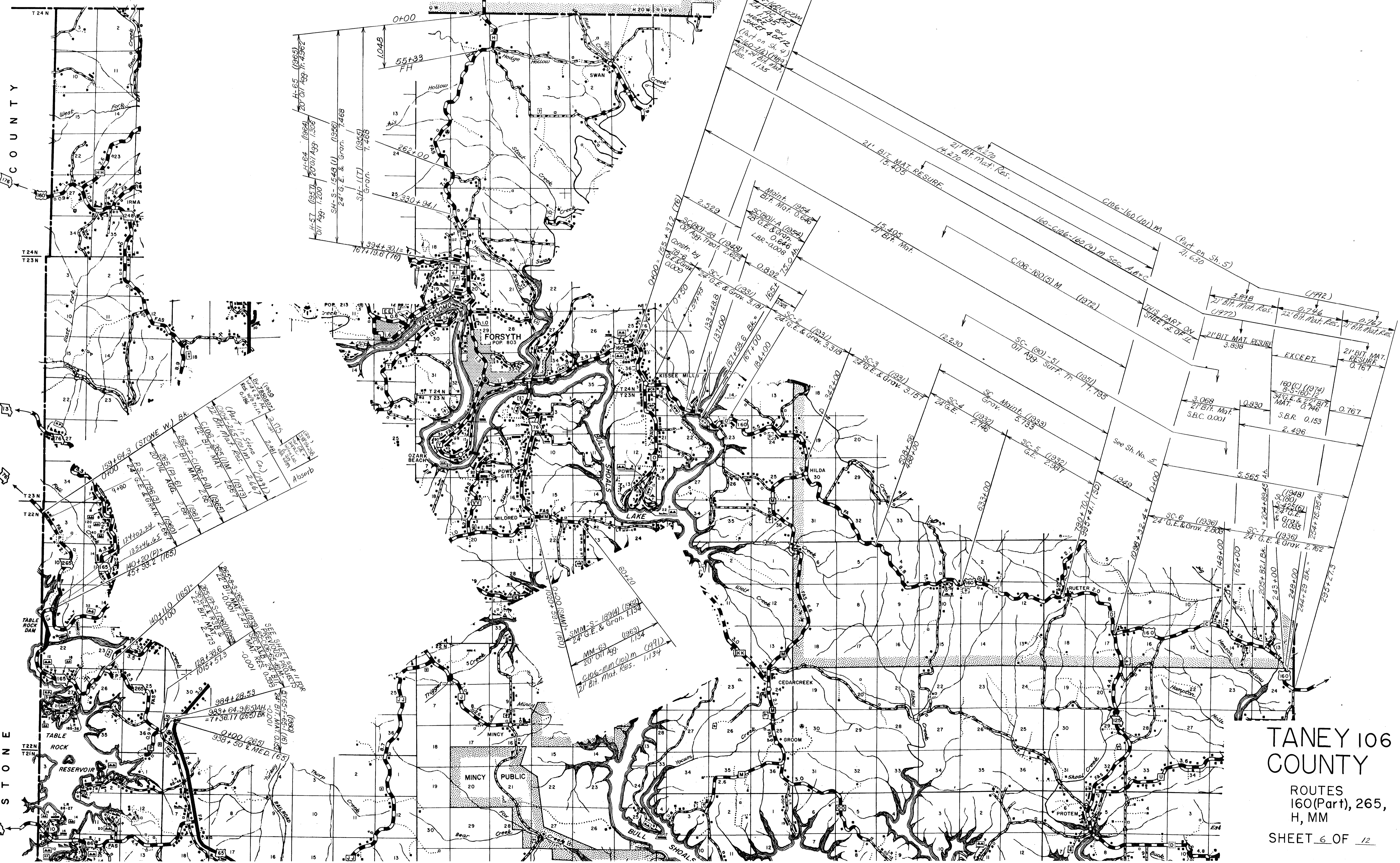






COUNTY

STONE



TANEY 106 ©  
 COUNTY  
 ROUTES  
 160(Part), 265,  
 H, MM  
 SHEET 6 OF 12

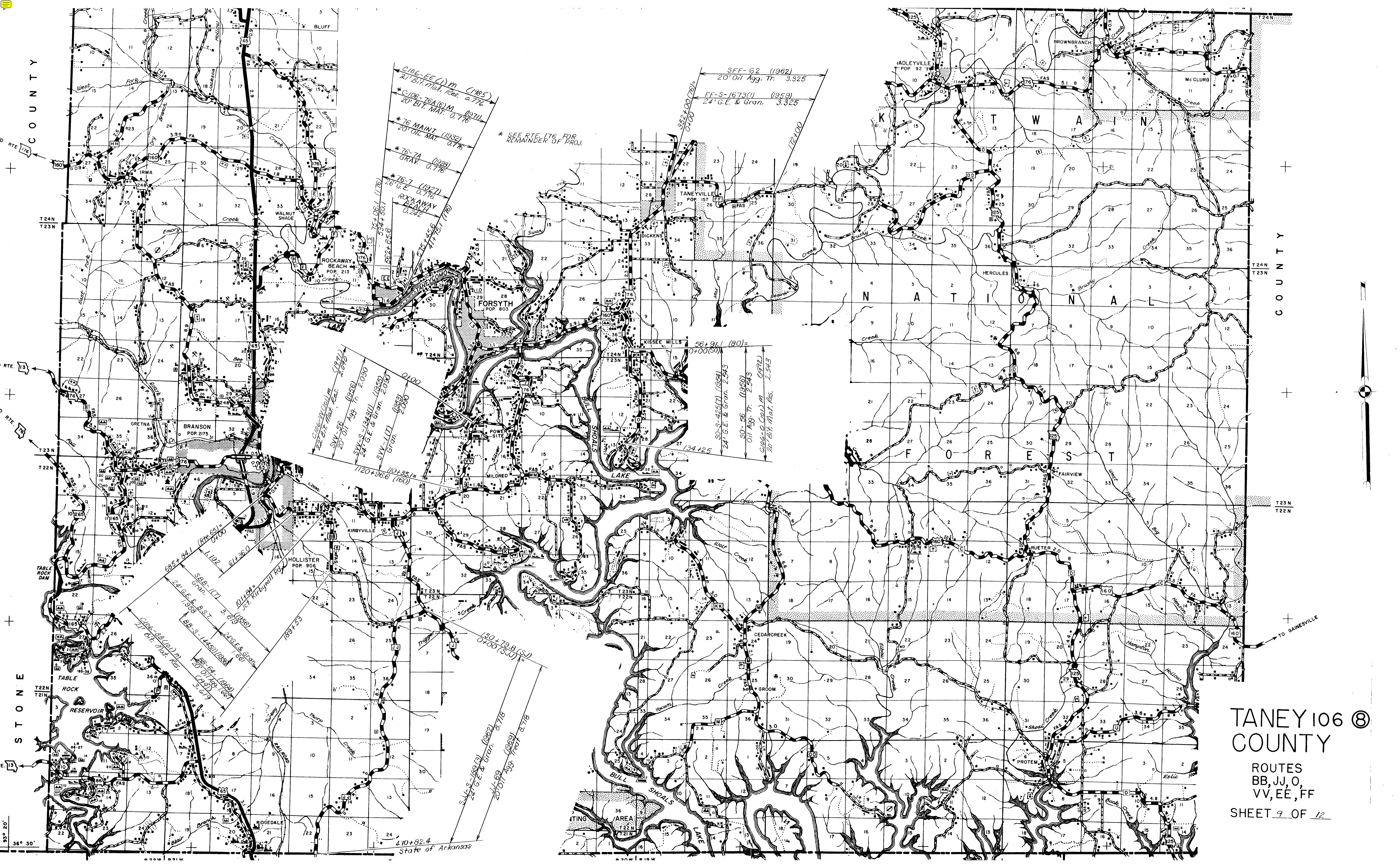












COUNTY

COUNTY

STONE

# TANEY 106 © COUNTY

ROUTES  
BB, JJ, O,  
VV, EE, FF

SHEET 9 OF 12

C106-EE(1)M (1985)  
21' Blt. Mat. Res. 2.776

\* G-106-76A(6)M (1971)  
20' Blt. Mat. 0.776

\* 76 MAINT (1932)  
20' OIL MAT. 0.776

\* 76-7A (1928)  
GRAV. 0.776

\* 76-7 (1927)  
26' G.E. 0.776

ROCKAWAY BEACH  
0.242

SEE RTE 176 FOR  
REMAINDER OF PROJ.

SFF-62 (1962)  
20' Oil Agg. Tr. 3.325

FF-S-1673(1) (1959)  
24' G.E. & Gran. 3.325

352+00(78)  
0+00

172+00

56+91.1 (30)  
0+00(30)

SO-S-425(7) (1934)  
24' G.E. & Gran. 2.543

SO-S-56 (1936)  
Oil Agg. Tr. 2.543

CO-S-O(1)M (1992)  
20' Blt. Mat. Res. 2.543

27+34.425

1120+96.6 (160)

110+35.1

SW-S-36 (1937)  
22' Blt. Mat. Res. 2.080

SW-S-36 (1938)  
20' Oil Agg. Tr. 2.080

SW-S-1345(1) (1935)  
24' G.E. & Gran. 2.080

SW-L(1) (1933)  
Gran. 2.080

685+84 (Rte 65)  
0+00

58B-1(1) (1950)  
24' G.E. & B.S.T.  
17.958

101+84  
Jct Kirby Mill Rd

242+E & Gran.  
17.958

BB-S-1445(1) (1958)  
27' Oil Agg. Tr. 17.958

BB-S-1445(1) (1958)  
27' Oil Agg. Tr. 17.958

150+79.8 (SJ)  
0+00 (SJ)

SLL-S-189(3) (1962)  
24' G.E. & Gran. 3.718

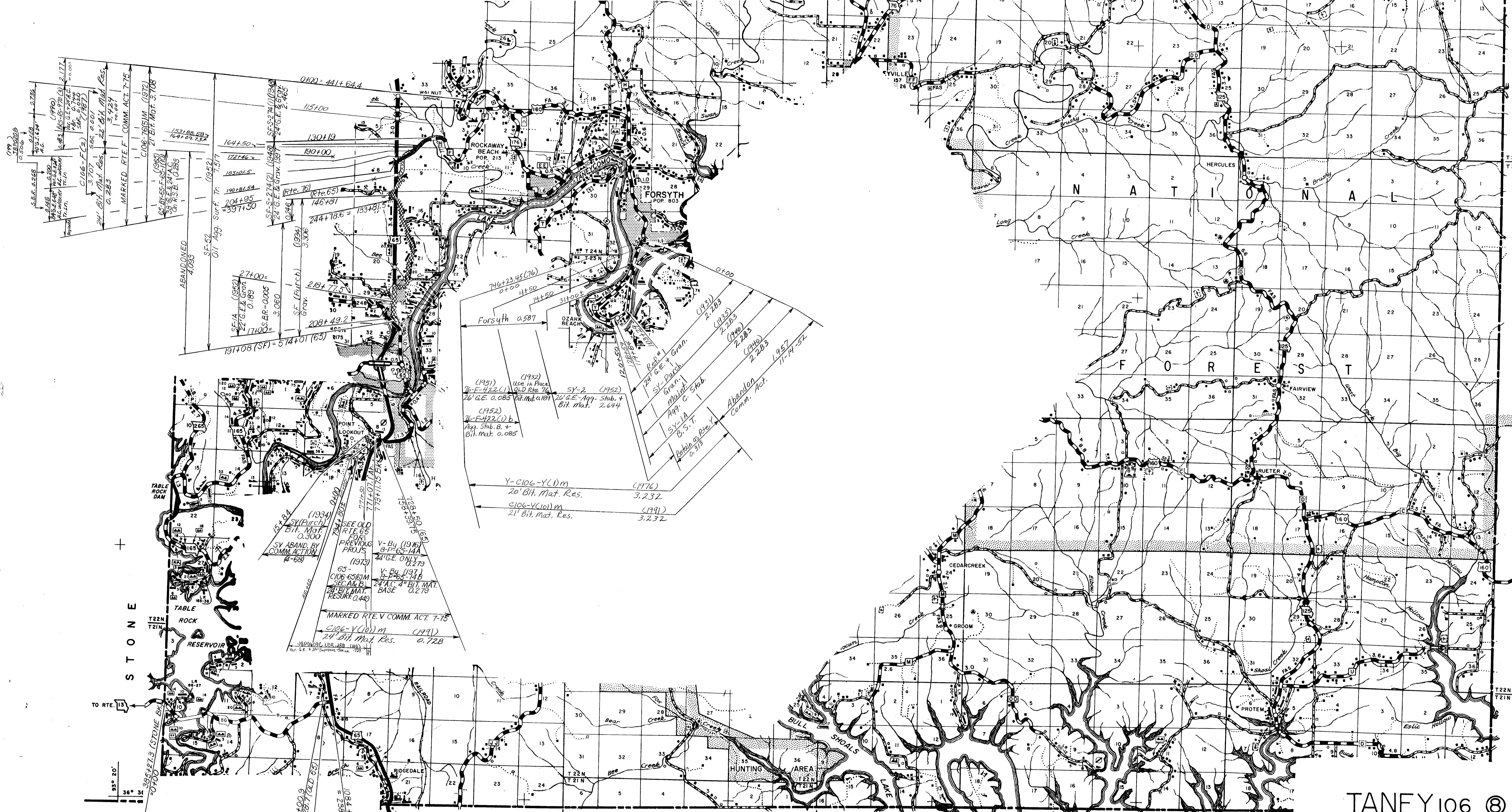
20+01.389 (1969)  
20' Oil Agg. Tr. 3.718

410+82.4  
State of Arkansas









153188.59  
 164104.75  
 164150  
 183106.6  
 140+81.54  
 204+95  
 397+50  
 191708 (SF) = 574+01 (65)

(1934)  
 SY-Purch.  
 20' Bit. Mat. Res.  
 0.300  
 SEE OLD  
 RITE 65  
 PREVIOUS  
 PROJ'S  
 (1973)  
 V-BY (1976)  
 9-P-65-14A  
 44' G.E. ONLY  
 0.279  
 V-BY (1971)  
 24' A.C. 4' BIT. MAT.  
 24' BIT. MAT. BASE  
 0.279  
 RESURF. 0.449  
 MARKED RTE. V. COMM. ACT. 7-75  
 C106-Y(101)m (1991)  
 24' Bit. Mat. Res. 0.728

(1951)  
 Use in Place  
 76-F-422(1) OLD Rite 76  
 26' G.E. 0.085 Bit. Mat. 0.189  
 (1952)  
 76-F-422(1) b  
 App. Stab. B. +  
 Bit. Mat. 0.085  
 (1976)  
 Y-C106-Y(1)m  
 20' Bit. Mat. Res. 3.232  
 (1991)  
 C106-Y(101)m  
 21' Bit. Mat. Res. 3.232

SEC. 106(1)  
 86-CORPS OF ENGRS. (1953)  
 30' G.E., BR. & 20' B.S.T. 4.398  
 86-C106-86(4) M. (1972)  
 21' BIT. MAT. 4.398  
 86-C106-86(5) M. (1977)  
 21' BIT. MAT. 4.398  
 C104-86(101)m (191)  
 21' Bit. Mat. Res. 4.398  
 (Part in Stone Co.)  
 232+00.9  
 175+728.7 (OLD 65)  
 232+35  
 1094+98.27 (NEW 65)  
 238+102.5  
 (198)  
 BY 65-F-65-116)  
 24' A.C. 0.128

TANEY 106 ⑧  
 COUNTY  
 ROUTES  
 V, Y, F, 86  
 SHEET 11 OF 12



