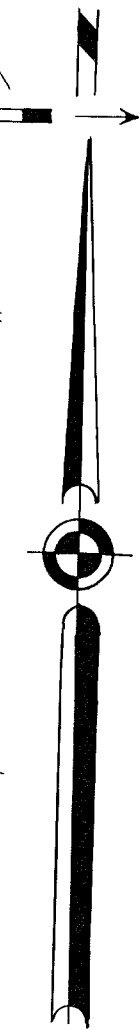


94° 40'
37° 40'



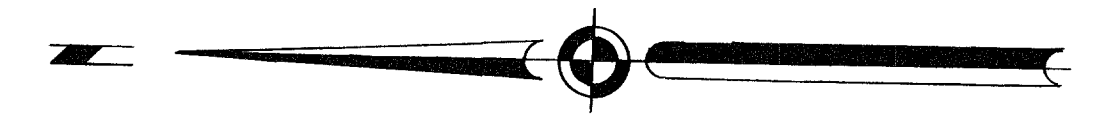
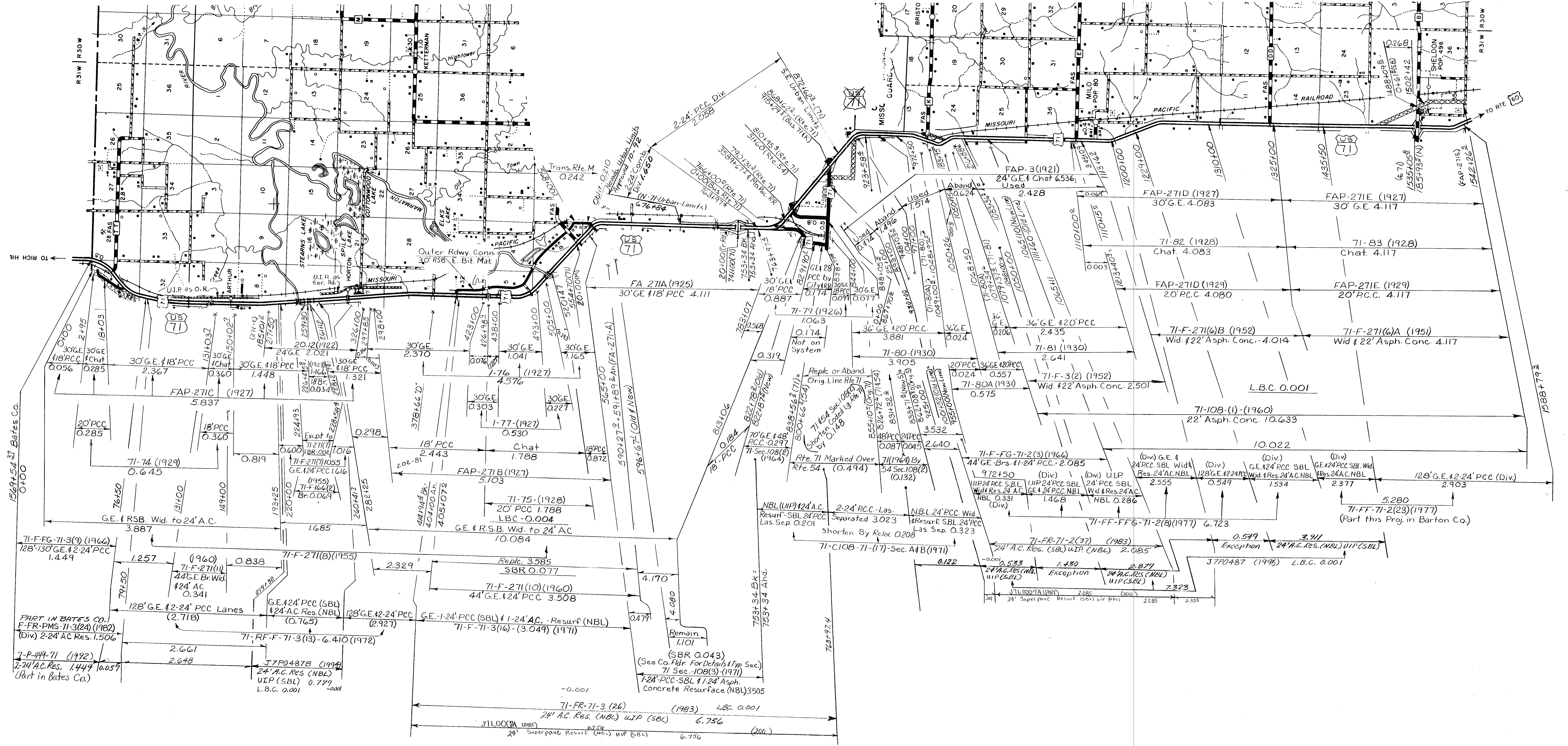
108
VERNON
 ROUTES:
 43, T
 SHEET 1 OF 13
 7

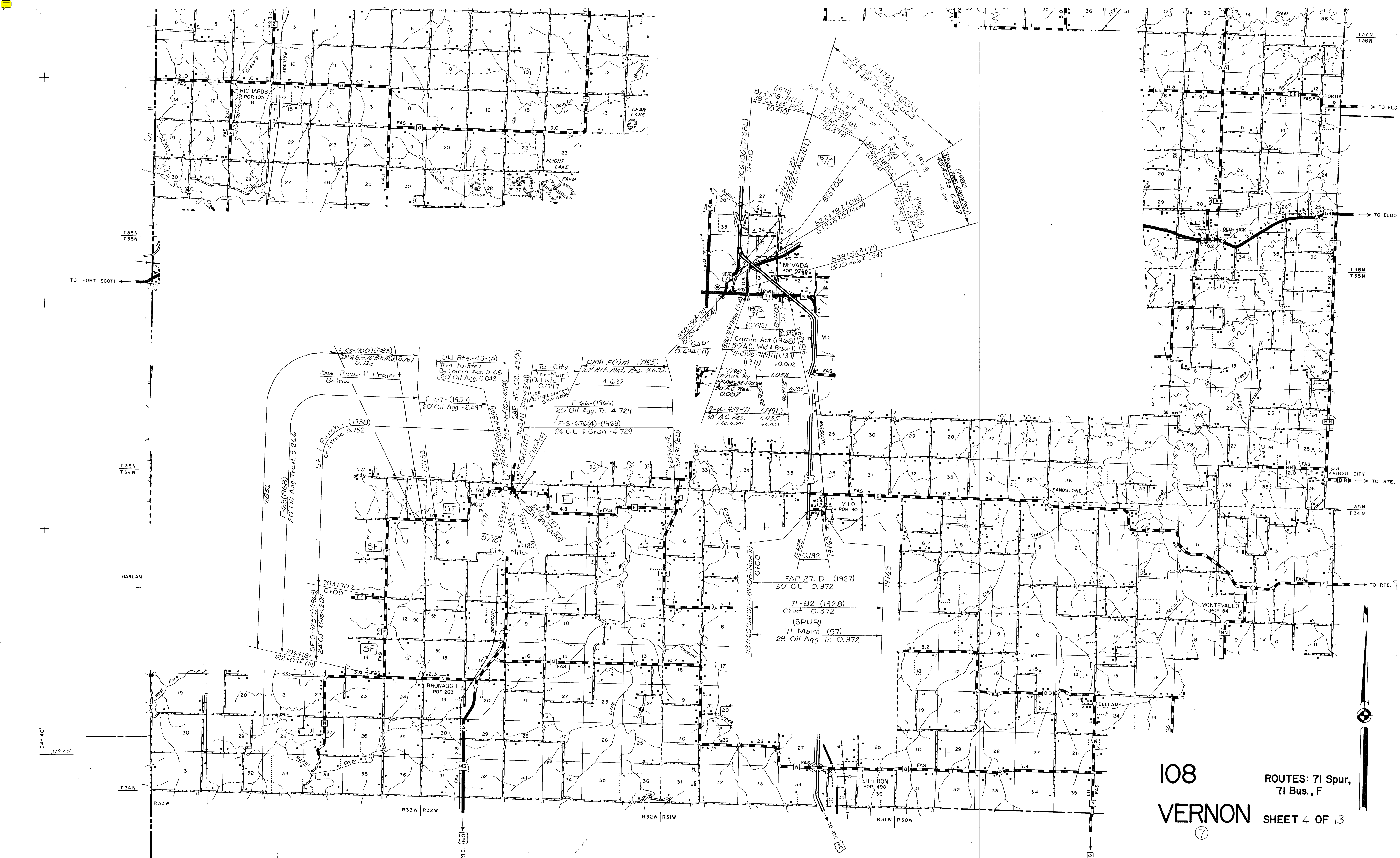


T34N
 R29W

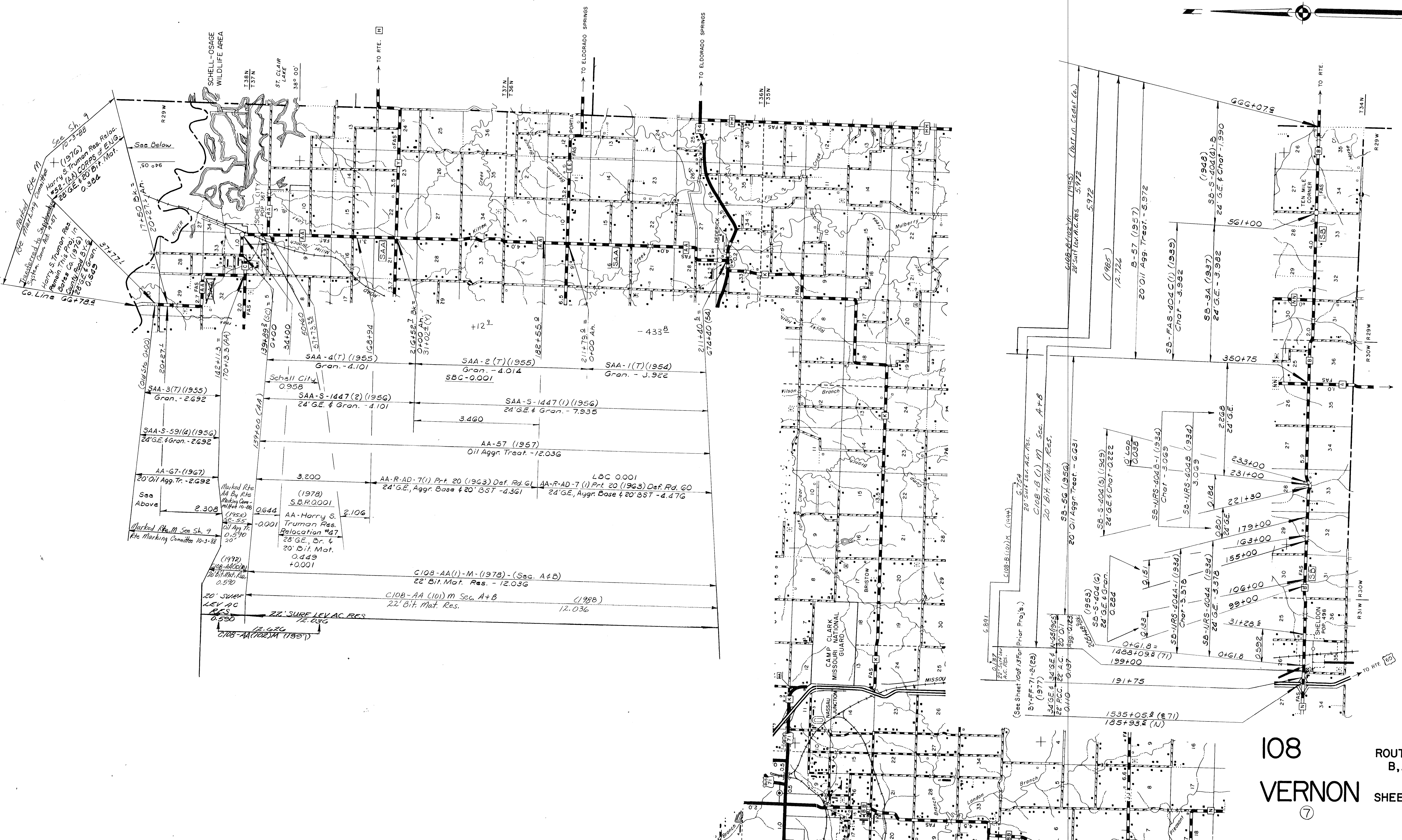


108
 VERNON
 ROUTE: 54
 SHEET 2 OF 13
 ⑦

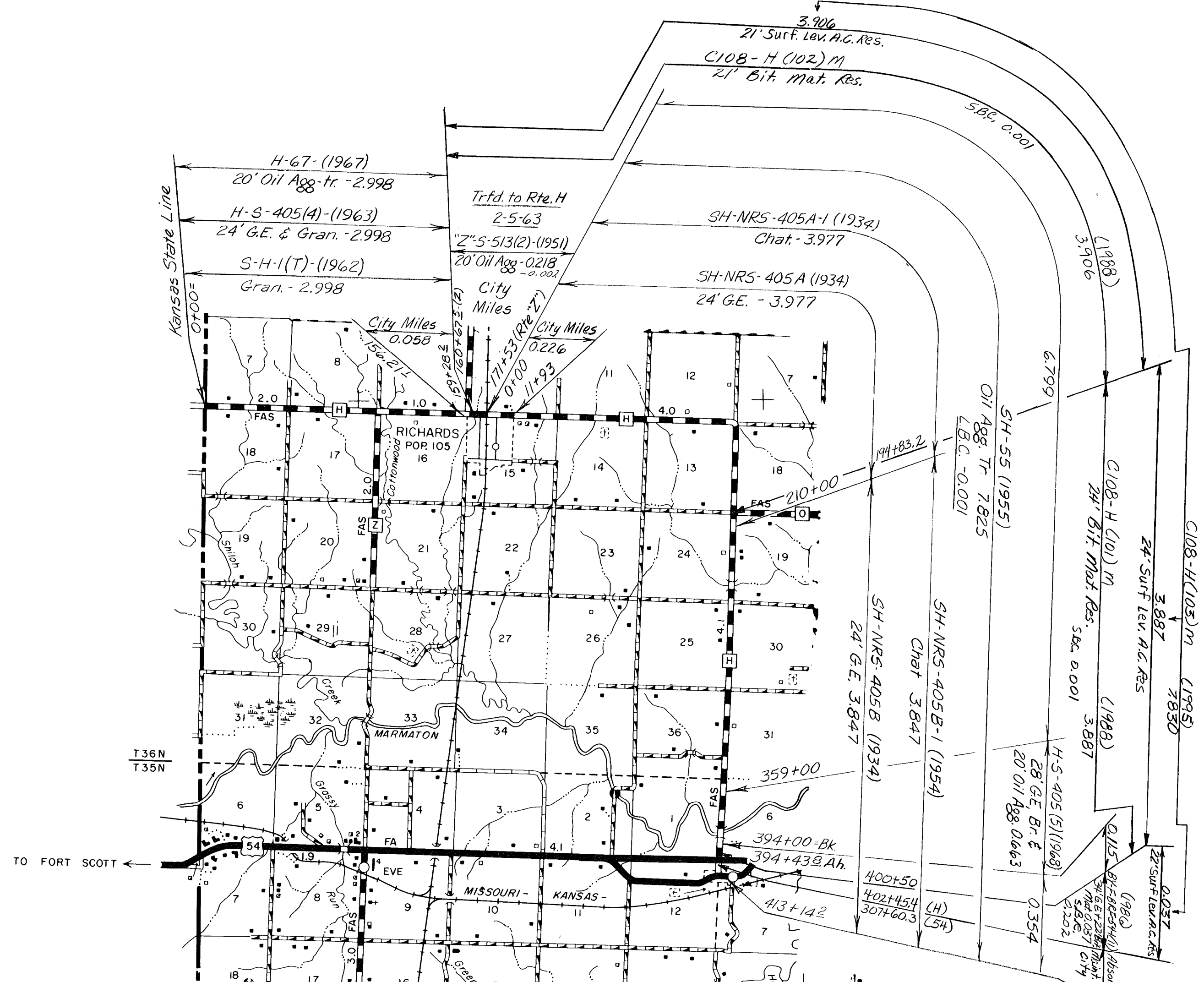
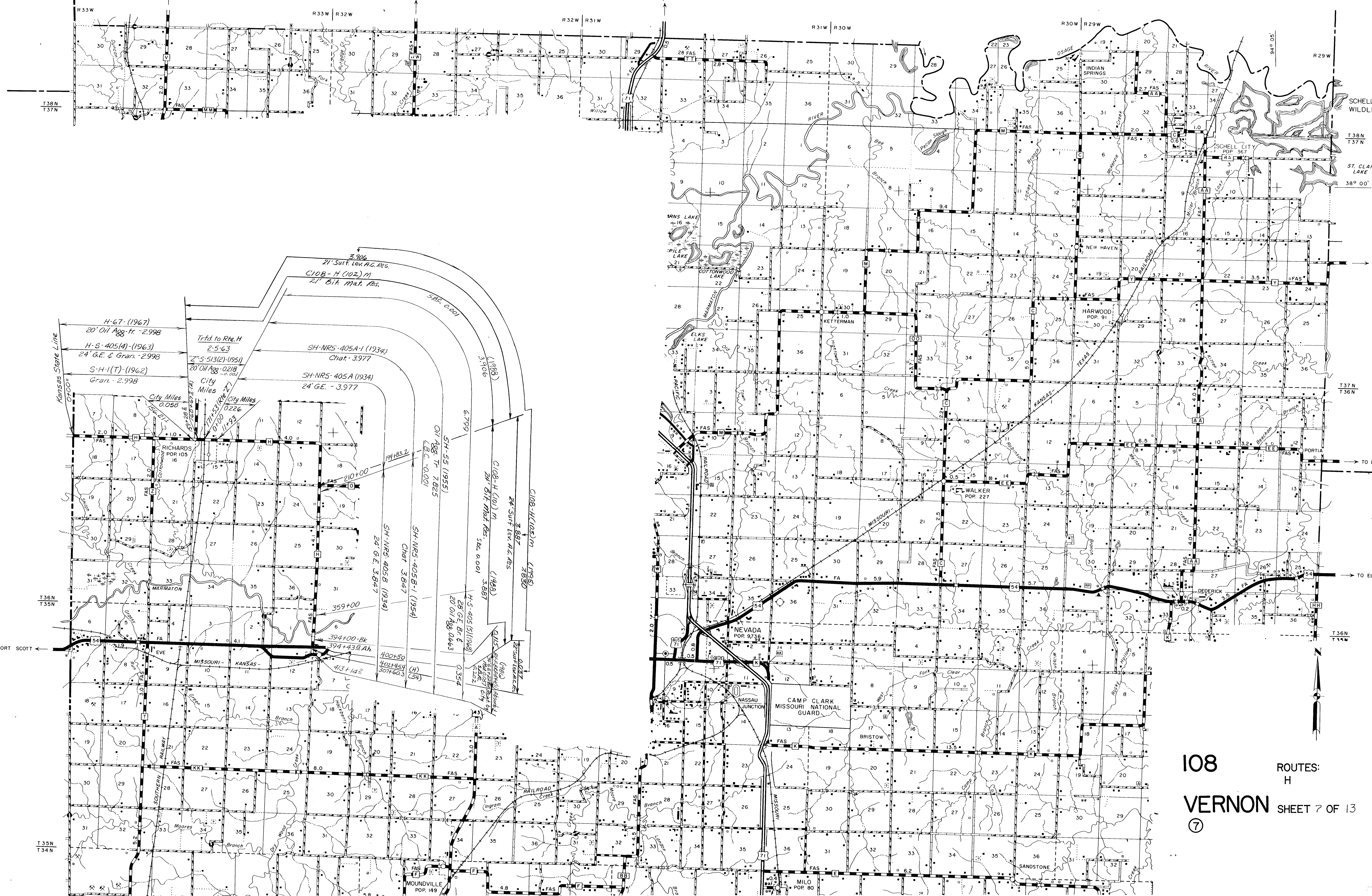




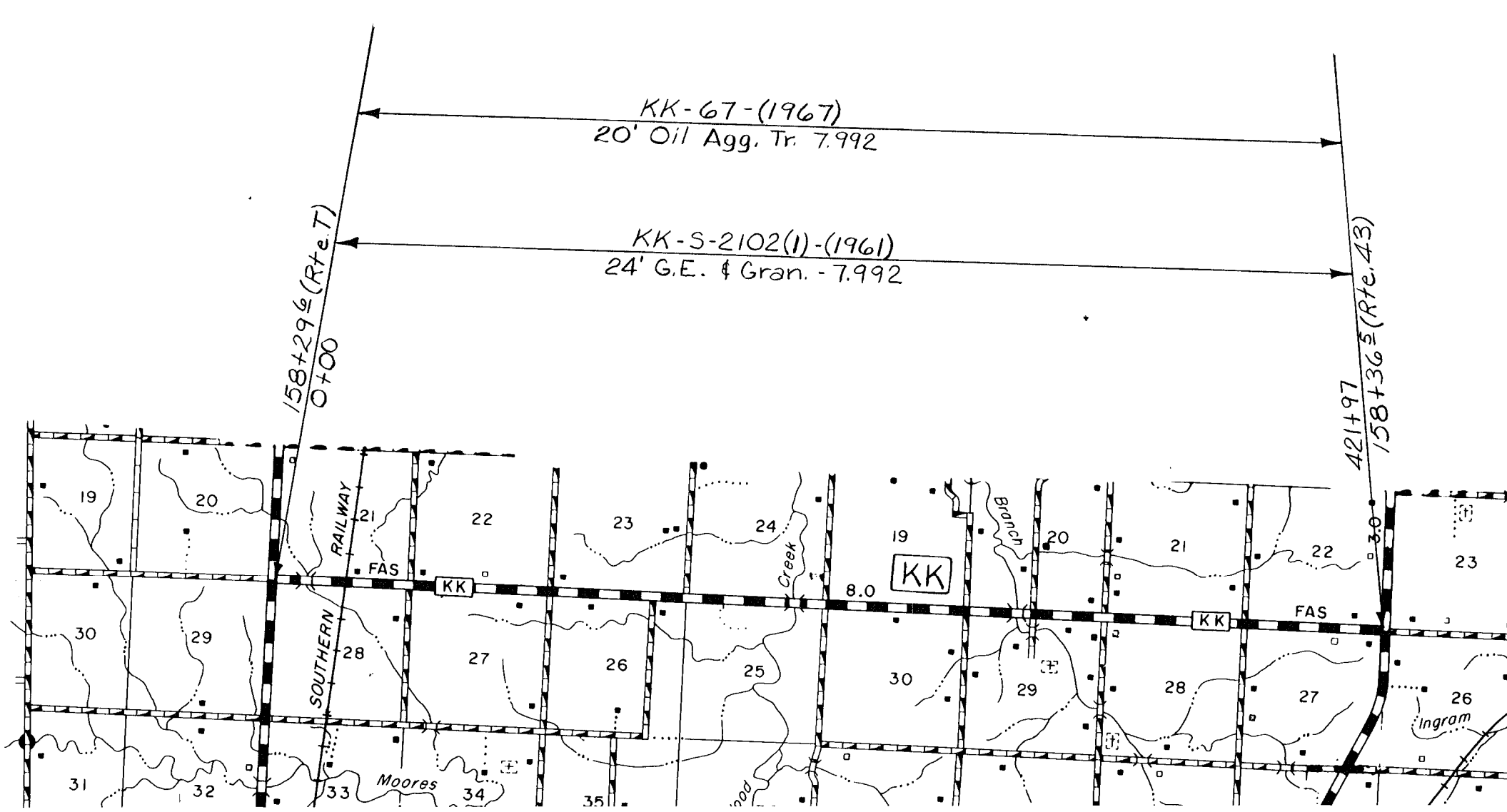
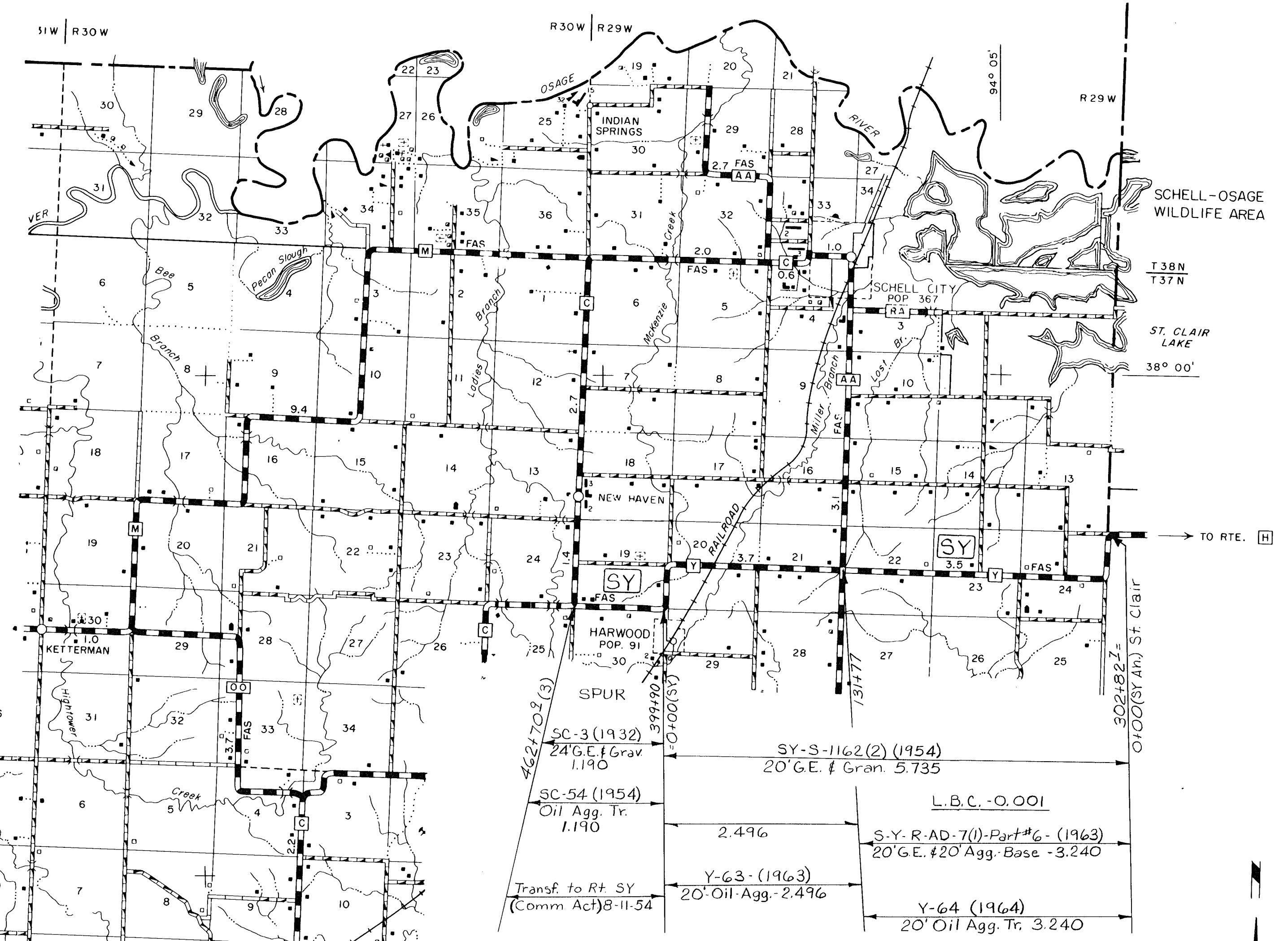
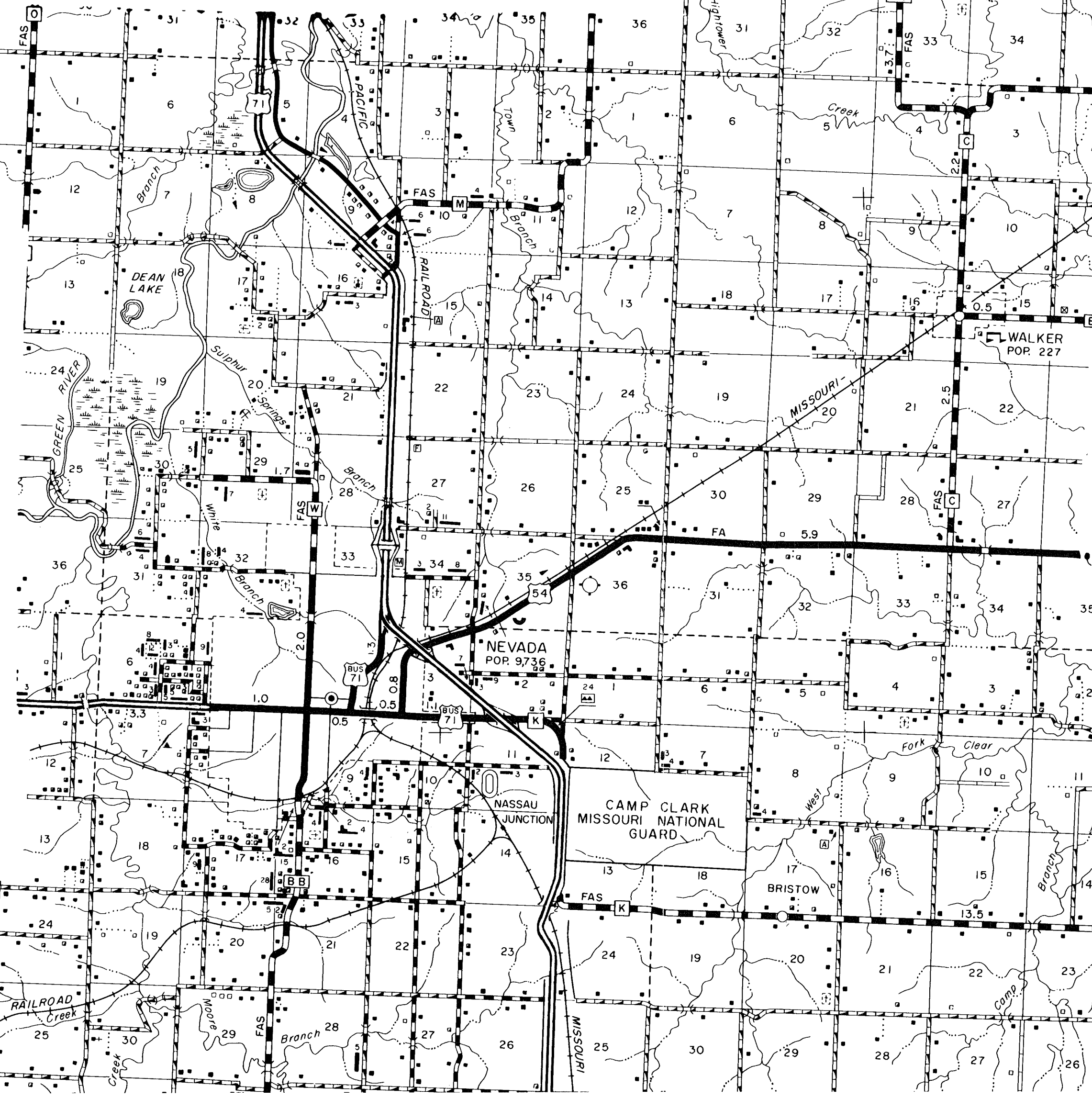
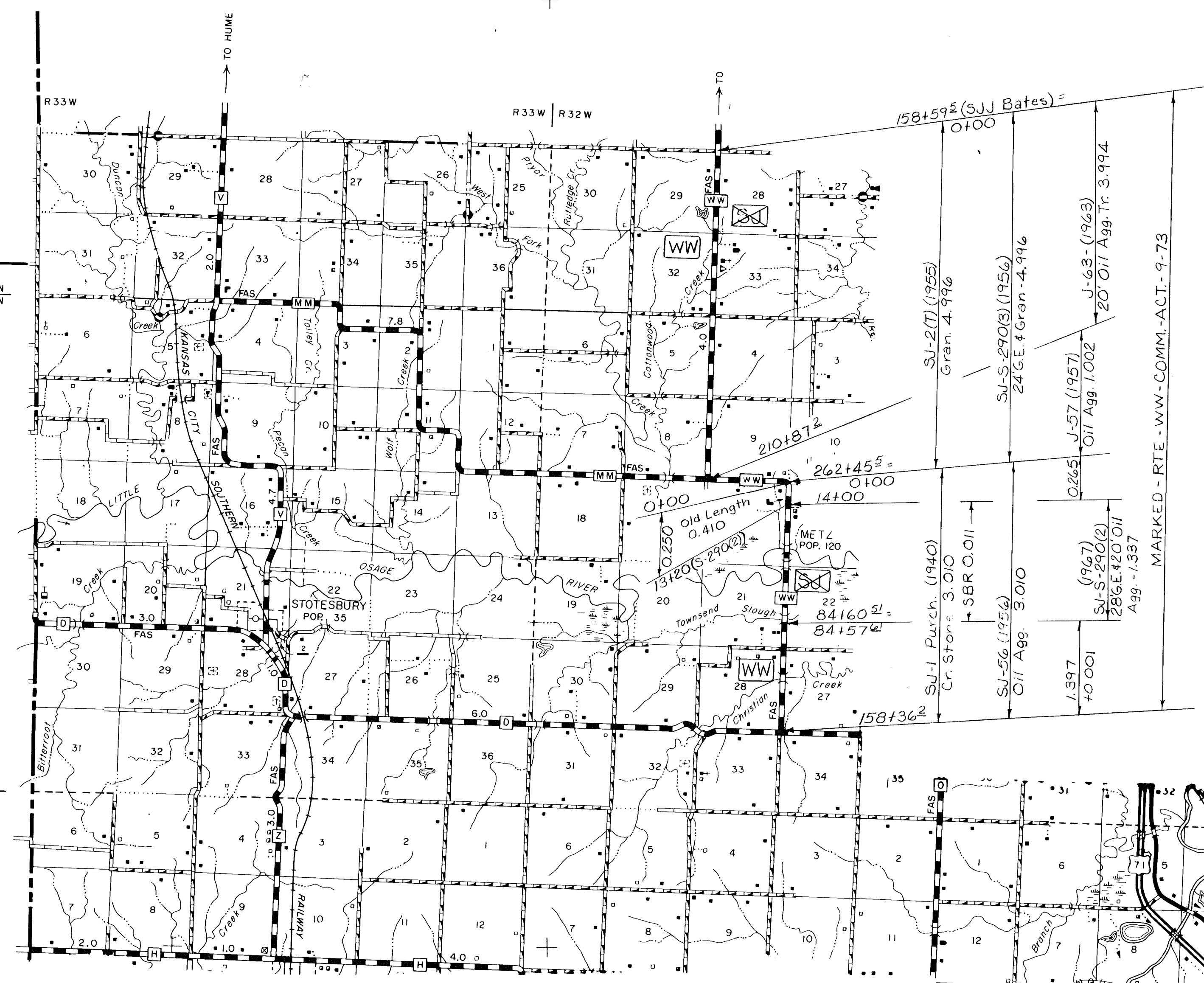
108
VERNON
 ROUTES: 71 Spur,
 71 Bus., F
 SHEET 4 OF 13
 ⑦



108
VERNON
 ROUTES:
 B, AA
 SHEET 5 OF 13



108 ROUTES:
 H
 VERNON SHEET 7 OF 13
 ⑦



158+59² (SJJ Bates) = 0+100

SU-2(T) (1955) Gran. 4.996

SU-S-290(S) (1956) 24' G.E. & Gran. 4.996

J-57 (1957) Oil Agg. 1.002

J-63 (1963) 20' Oil Agg. Tr. 3.994

1.397 (1967) 70.001

SU-S-290(O) 28' G.E. & 20' Oil Agg. - 1.587

MARKED - RTE - WW - COMM. - ACT. - 9-73

SU-1 Purch. (1940) Cr. Stor. = 3.010

SU-56 (1956) Oil Agg. 3.010

210+87²

262+45⁵ = 0+100

14+00

Old Length 0.410

13+20 (S-2400)

METZ POP. 120

84+60⁵ = 0+100

84+57²

158+36²

462+70³ (S)

SC-3 (1932) 24' G.E. & 16' Grav. 1.190

SC-54 (1954) Oil Agg. Tr. 1.190

Transf. to Rt SY (Comm Act) 8-11-54

SY-S-1162(2) (1954) 20' G.E. & Gran. 5.735

L.B.C. - 0.001

S-Y-R-AD-7(1)-Part #6 - (1963) 20' G.E. & 20' Agg. Base - 3.240

Y-63 - (1963) 20' Oil Agg. - 2.496

Y-64 (1964) 20' Oil Agg. Tr. 3.240

399+90 (SY)

302+82 (SY AN) St. Clair

TO RTE. H

KK-67 (1967) 20' Oil Agg. Tr. 7.992

KK-S-2102(1) - (1961) 24' G.E. & Gran. - 7.992

158+29² (Rt 7) 0+100

42+497

158+36² (Rt 43)

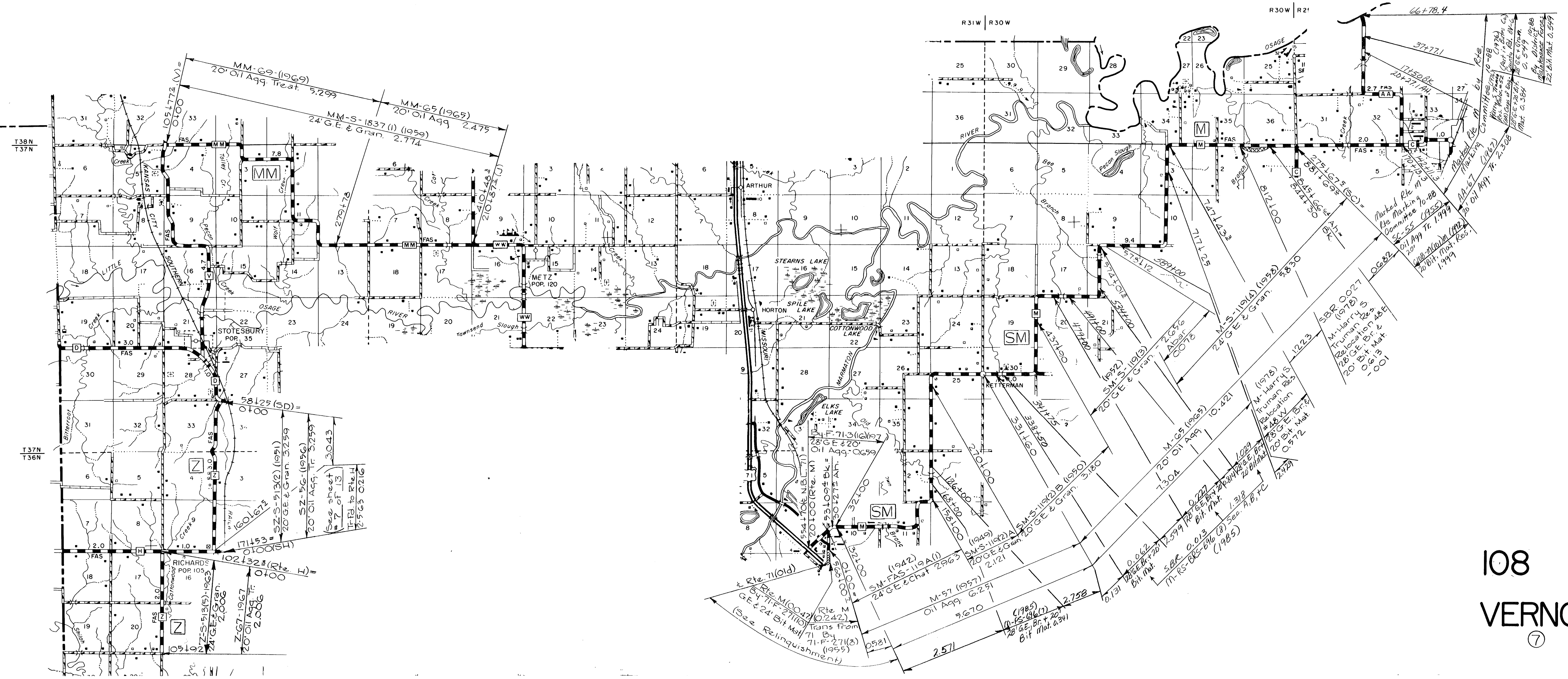
108

VERNON

7

ROUTES:
Y, KK, WW

SHEET 8 OF 13

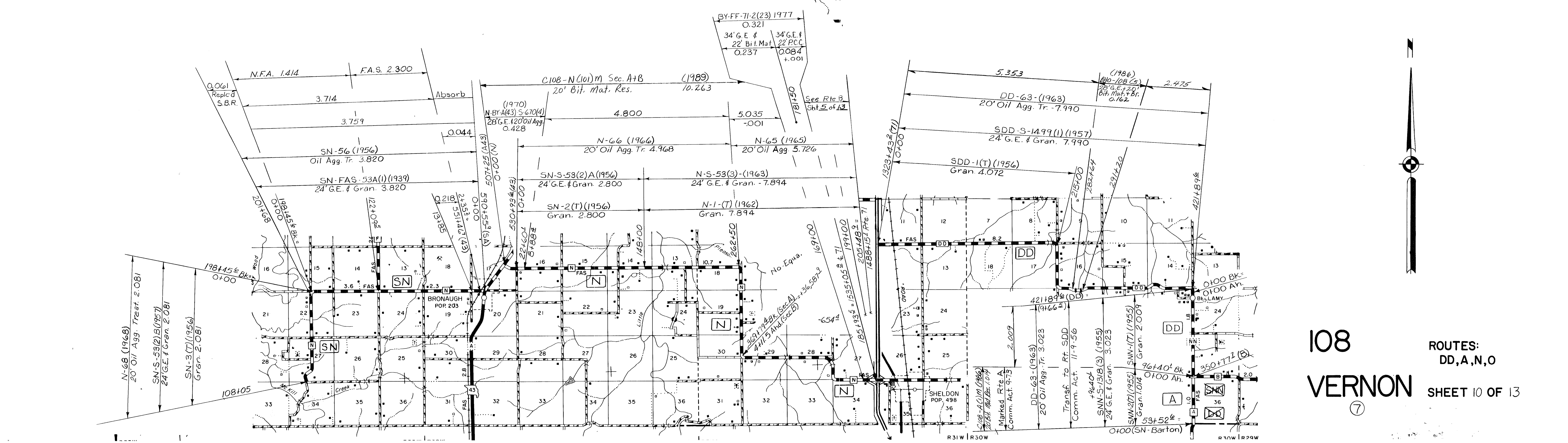
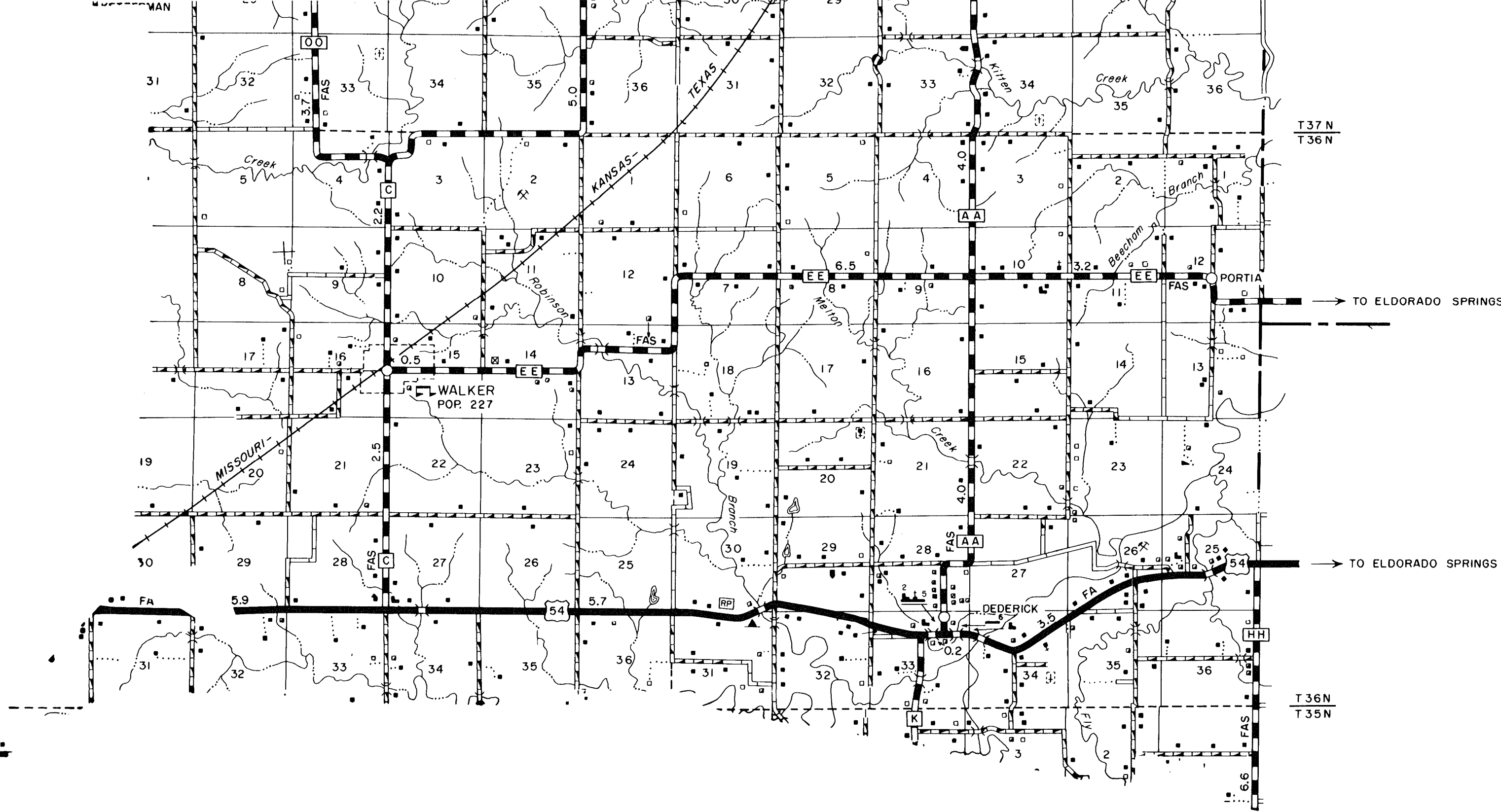
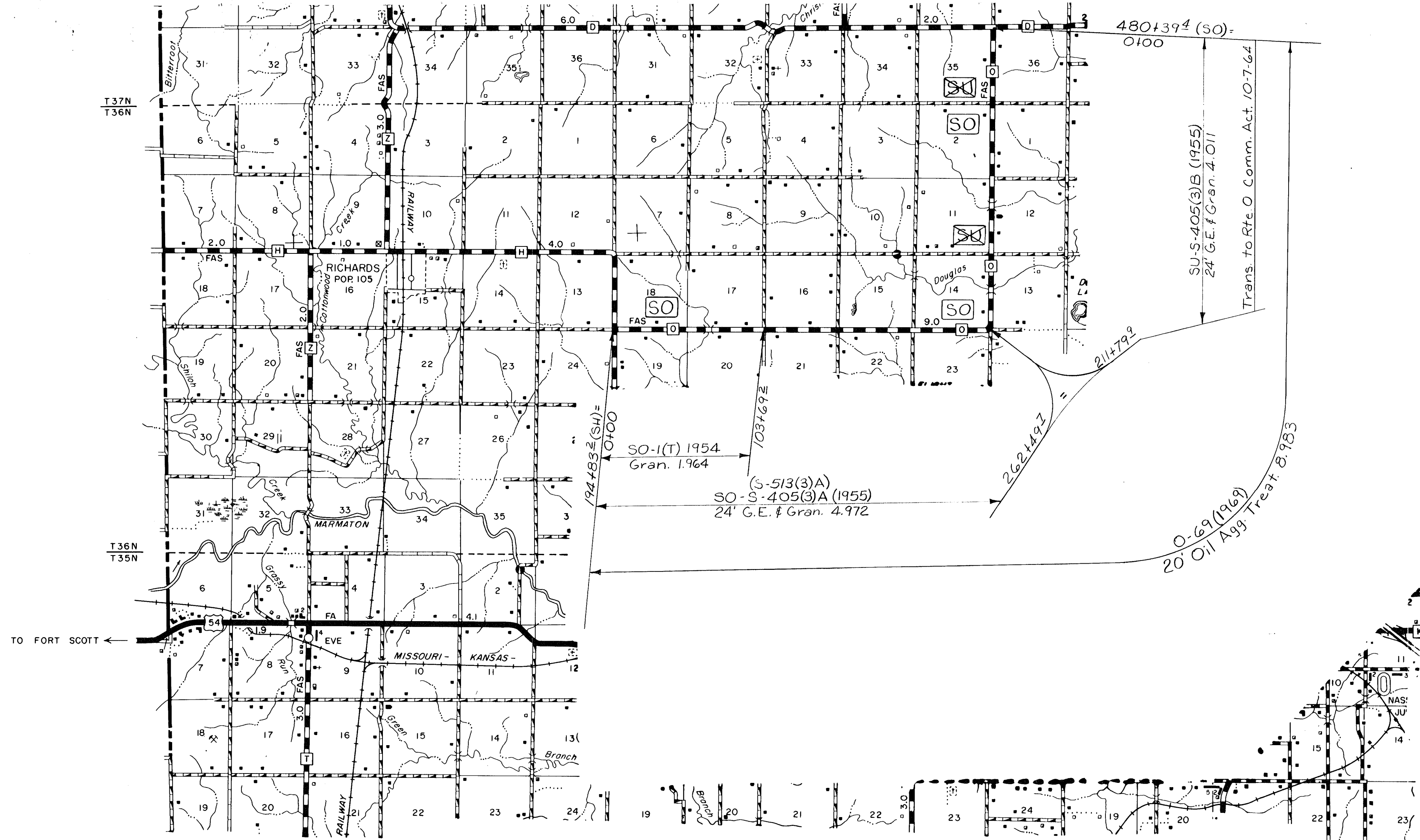


108

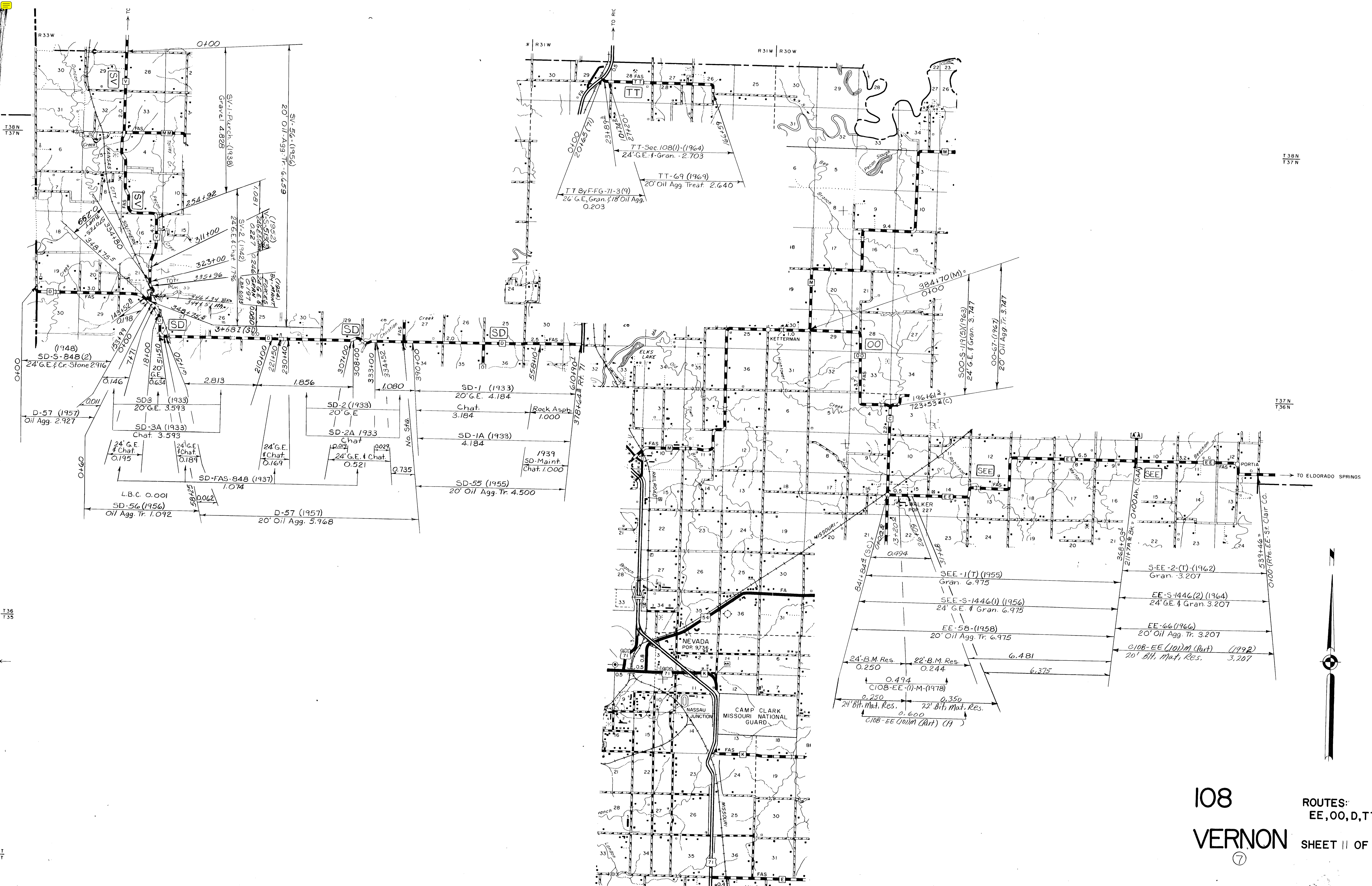
VERNON

⑦

ROUTES:
Z, MM, M
SHEET 9 OF 13



108
 VERNON
 ROUTES:
 DD, A, N, O
 SHEET 10 OF 13
 7



T38N
T37N

T37N
T36N

T36
T35

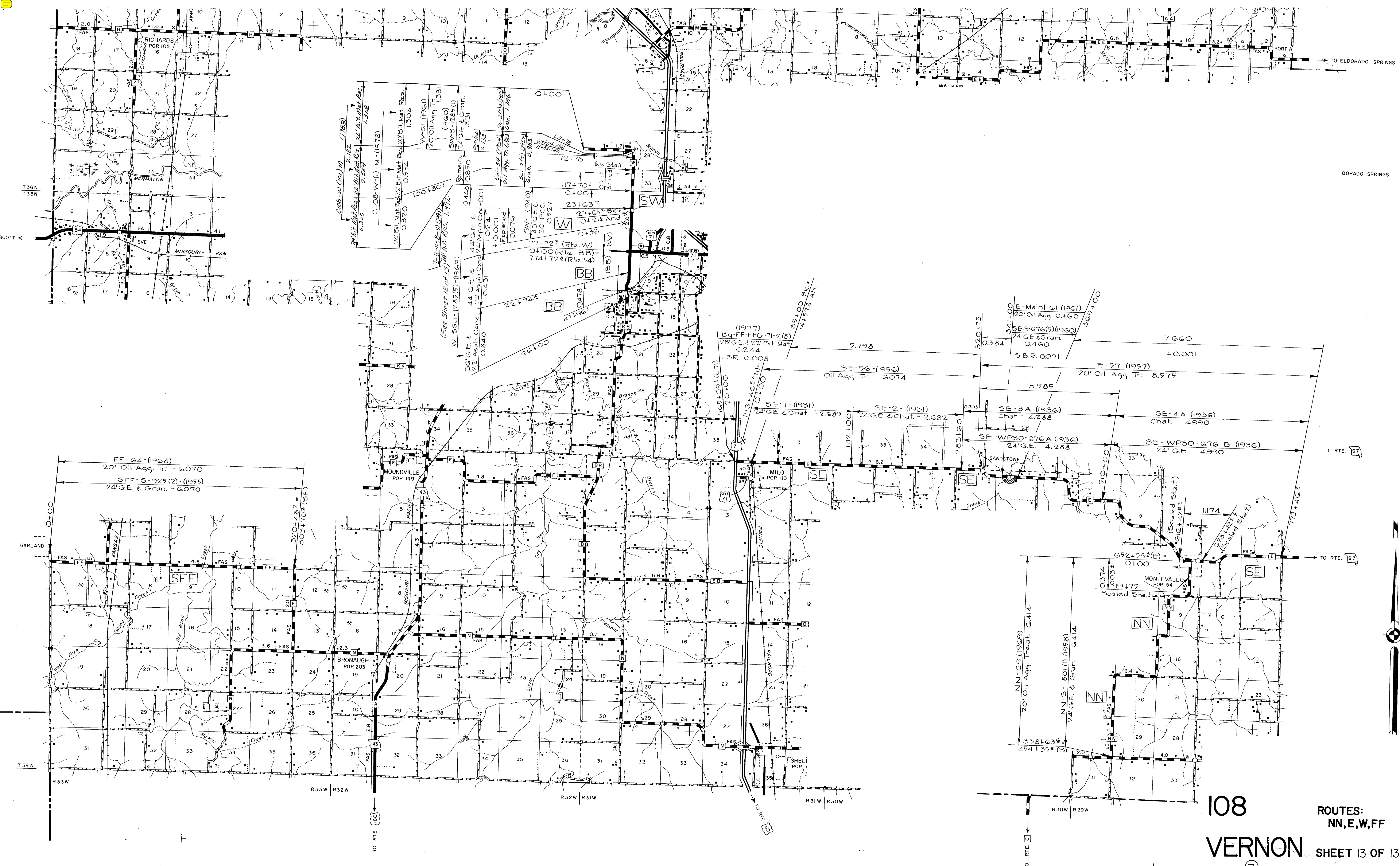
108

VERNON

ROUTES:
EE, OO, D, TT, V

SHEET 11 OF 13

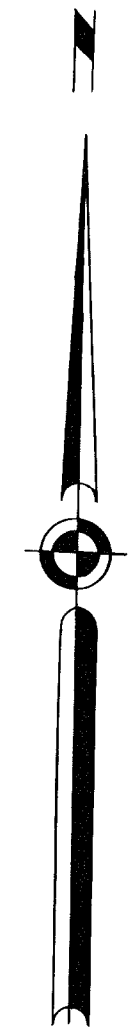
7



DORADO SPRINGS

TO RTE. 97

TO RTE. 97



108

VERNON

ROUTES:
NN, E, W, FF
SHEET 13 OF 13

⑦